

CoDesign Meeting #5 Outreach Summary & Indexing

PARKS LOVE

Icebreaker

*"What are you excited to do
this spring?"*

Agenda

1. Introduction and Project Update
2. Engagement Results Summary
3. Introduce Indexing Model
4. Next Steps

Project Update

- Site Inspections
- Tree Assessment
- Technical Review
- Site Visits & Project List Review



CoDesign Meetings Summary

- #1 Inclusion
- #2 Equitable Access
- #3 Health
- #4 Resilience



PARKS LOVE

Inclusion

How can parks be more inclusive or welcoming to people of all ages and abilities?

Inclusion Main Themes

- Accessible facilities, equipment, paths and trails
- Clean and well-maintained landscapes
- Lighting for safety and to extend park usage
- Interpretive signage and wayfinding
- Culturally friendly spaces

Stories

"Welcoming to diverse groups with culturally specific programs."

"Highway and road noises are not welcoming."

"For some people green and soft scaped spaces are welcoming, but for people with mobility issues more hardscaped spaces are more accessible and welcoming."

"For our volunteer events we should include a land acknowledgement and look for ways to include Native American communities."

"Including multiple languages for wayfinding and shelter rentals."

"Lack of playgrounds where adults or big kids can play with their kids or siblings on equipment is not welcoming."

"A lack of playgrounds that support multi-generational play are less inclusive."

"The perception that the park is safe is more welcoming."

"Culturally friendly"

"Making sure we have facilities to encourage gatherings from people that are from different backgrounds."

"Parks are multi-use. Is there a way to a friendly and open way for parks to be more multi-cultural?"



"It's really nice having dog waste bags available on the walking path."

CoDesign (Inclusion)

Equitable Access

How can park access be improved?

Equitable Access Main Themes

- Access to well-maintained park spaces
- Network connections to parks and trails
- Acquire land to build small neighborhood parks
- Access to nature
- Access to services/partnerships within the parks system.

Stories

"Go beyond addressing physical disabilities."

"Trails should be well lit."

"Language and technology accessibility needs to be improved to address gaps across cultures."

"Disability needs are addressed in the facilities."

"Braille signage and braille trails."

"Woodchips are not accessible for people with mobility issues."

"There is a lack of signage for parks."

"All ability parks are truly inclusive for all."

"We should focus on improving the parks we have instead of adding new"

"Shelter rental processes that are simple and straightforward."

"Go beyond an accessible swing. Why aren't all parks fully accessible?"

"Improvements to restrooms and pathways."

"Add accessibility info to the parks website with symbols."

"I live in the Park Gap area and a new park could make a big difference"



"More fragrant flowers for visually impaired people."

CoDesign (Access)

Health

How do parks improve physical, mental and social health? How can they address community wide health inequities?

What do we mean by health?

- **Physical health** is the condition of the body, proper bodily functions, and physical fitness.
- **Mental health** refers to a person's emotional, social, and psychological well-being.
- **Social health** relates to social habits and support systems and their relation to overall health. Being active with others in your community can have a positive effect on your health habits.

"Health equity means that everyone has a fair and just opportunity to be as healthy as possible.

This requires removing obstacles to health such as poverty, discrimination, and their consequences, including powerlessness and lack of access to good jobs with fair pay, quality education and housing, safe environments, and health care."

—Robert Wood Johnson Foundation

Wellness Hub

- Showcase community resources
- Provide year-round or pop-up services in an accessible location
- Serve as gathering places for community members and visitors, which result in improved community connectedness and inclusion
- Promote results-driven, multisector partnerships among community businesses and organizations
- Improve the efficiency, affordability and sustainability of community services from the pooling of community resources, a significant benefit to under-resourced and underserved communities

Trusted gathering places that connect every member of the community to essential programs, services and spaces that advance health equity, improve health outcomes and enhance quality of life.



Camp Programs



Public Gathering Spaces



Health Clinic Pop Ups



Community Gardens

Partnerships

Medical Partnerships



Social Services



Food Partnerships



Health Main Themes

- Nature Trails and Loop Paths
- Sport Courts and Fields
- Playgrounds and Intergenerational Equipment
- Decompression/ Mindfulness (Mental Health)
- Pet friendly spaces
- Community Gardens
- Pop Up Wellness Hubs
- Partnerships-food based, local community health clinics and schools

Stories

"Wellness hubs could feature mobile pop up services for holistic/natropathic medicine, diabetes and blood pressure awareness, and vaccinations (Covid19/flu)."

"Partnerships would be beneficial for people to access wellness hub organizations and services."

"Meeting people at the park."

"Free place to workout or hangout with friends, family or by yourself."

"I would rather walk or ride a bike to the park, but I drive due to safety concerns from a lack of continuous sidewalks or bike lanes."

"I canceled my gym membership during covid and exercised in the fresh air at the park because it was safer."

"The Rec. center wouldn't be the best space for a wellness hub unless there was fresh fruits and vegetables provided."

"Walking and watching birds benefit mental health."

"Parks benefit mental health by offering an escape from home or work in a safe space, surrounded by trees and birds."

"Team sports like pickleball support good social health."

"Parks support social health for teens by creating a space for teens to go and be themselves without supervision."

"A lot of existing wellness hub organizations aren't currently going towards where the most help is needed."



"Outdoor covered areas for physical activities (non-picnic) during the rainy season benefit physical health."

CoDesign (Health)

Environmental Resilience

How can parks become more environmentally resilient?

Environmental Resilience Main Themes

Lynnwood Environmental Issues

- Preserving and restoring healthy forests
- Environmental Injustice

Resilient Park Landscapes

- Increased biodiversity and drought tolerance
- Signage on how to interact with non-traditional resilient park landscapes.
- Maintenance Concerns

Healthy Forest Management

- Supporting/restoring healthy forest understory by planting native ground cover. *[True forest vs. dense trees without an understory.]*
- Climate Resilience

Water

- Storm Water Parks
- Green Stormwater infrastructure in parks (raingardens, swales, etc.)

Stories

"Nature is beautiful and creates peace and calm, we need to be intentional to be the best stewards for a healthy/resilient community and park system not just focus on aesthetics."

"I am concerned with fertilizer contamination."

"De-pave"

"Xeriscaping is a low maintenance and resilient planting strategy that parks could do."

"Education is critical for the community to get buy in and to be comfortable with these changes."

"We need signs encouraging kids to play in these untraditional landscapes."

"I harvest nettles to make a health tincture in late spring."

"Make sure there is interpretive signage educating the public."

"What is the balance between native and future climate adapted plants?"

"Strengthen the relationship between parks and schools."

"Reach out to tribal communities for plant suggestion/knowledge"

"Daylighting creeks"

"I'm concerned with noise pollution from airplanes."

"Carbon sequestration"

"Supporting healthy forest understory"

"Bring the bees back!"



CoDesign (Environmental Resilience)

Discussion: What is ParksLOVE to you?

Having pride in our parks and community

ParksLove is structured planning and governance that will benefit our parks

Allowing all community members to feel they belong at our parks



reexamining how our parks function

It is an effort of different people coming together and have their voices heard to make parks in LYNNWOOD equitable

Having pride in our parks and community



Targeted Outreach

P  R K S  V E

Targeted Outreach Events

- ESD Disability Awareness Event
- Project Girl (teens)
- Ethiopian Event



Desired Park Features from Direct Outreach Events



Fitness and Play

Fitness and Play

149



Comfortable Environment

Comfortable Environment

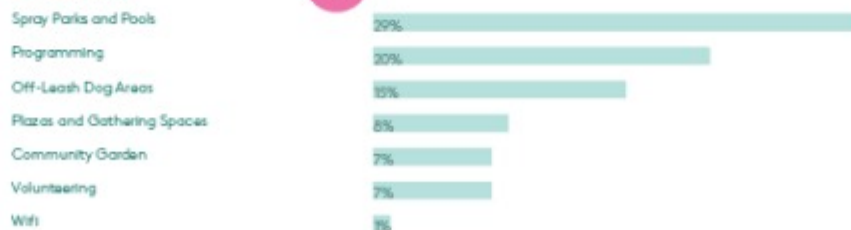
113



Community

Community

87



New Infrastructure

New Infrastructure

6

Restrooms

ETHIOPIAN EVENT
PROJECT GIRL EVENT
ACCESSIBILITY EVENT

Community Focus Groups

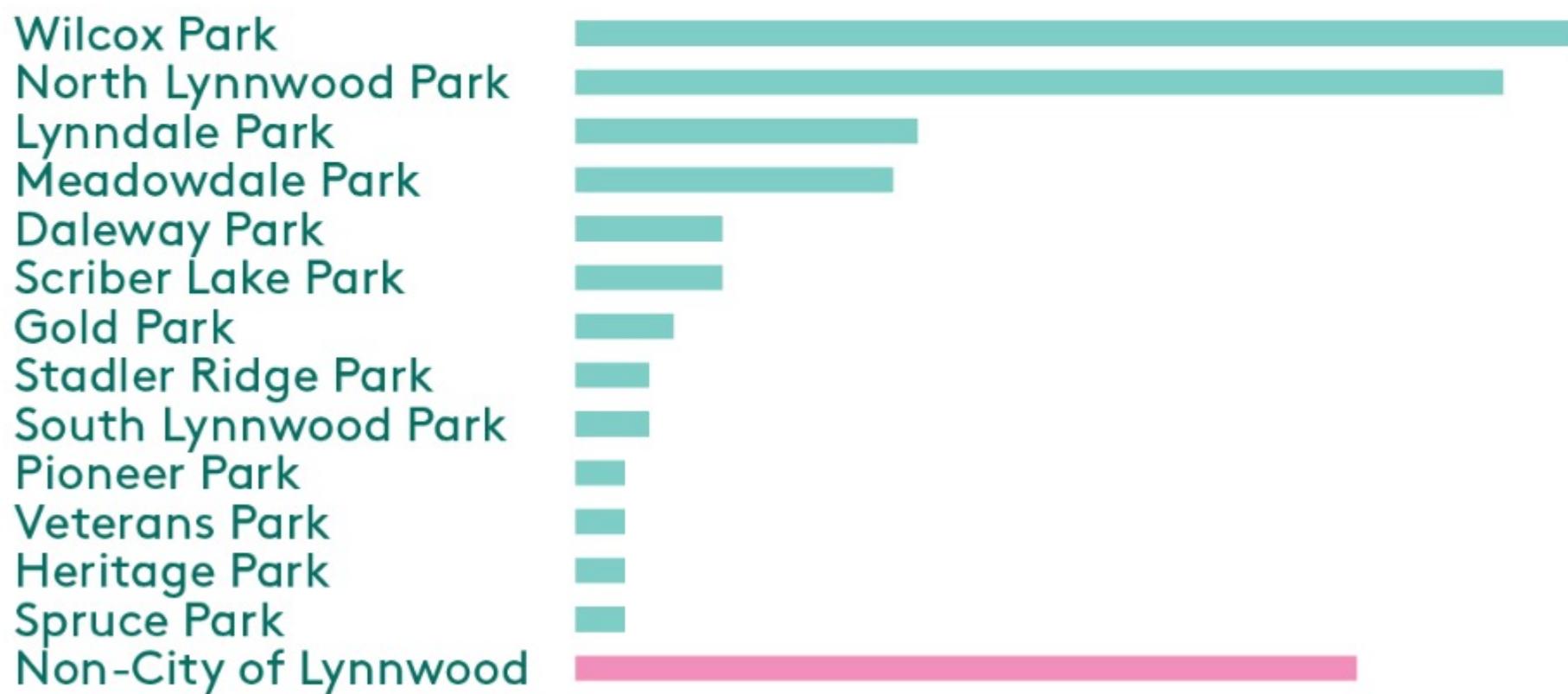
Refugee and Immigrant Services Northwest

- Afghan
- African-American
- African (Immigrant and Refugee)
- Cambodian
- COFA
- Latinx
- Ukrainian and Russian
- Vietnamese

P  R K S  V E

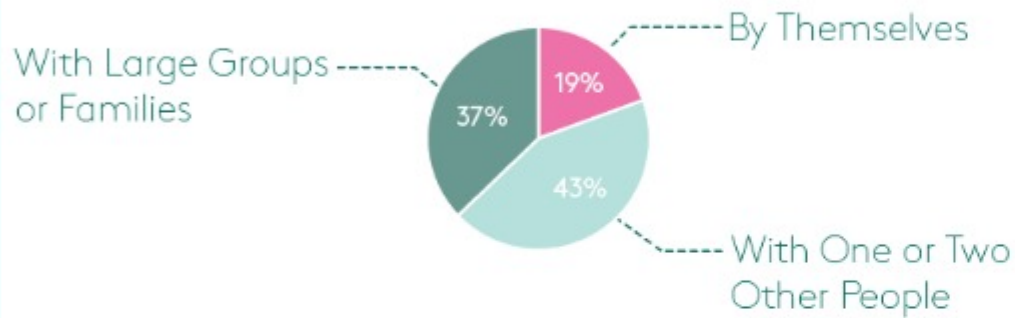
Common Themes

Parks Frequented Across Focus Group Members

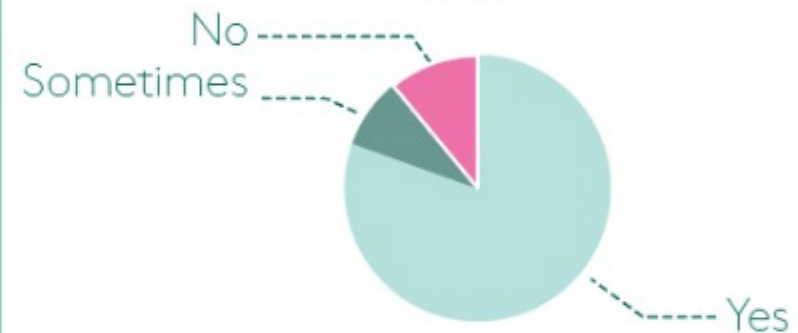


Common Themes

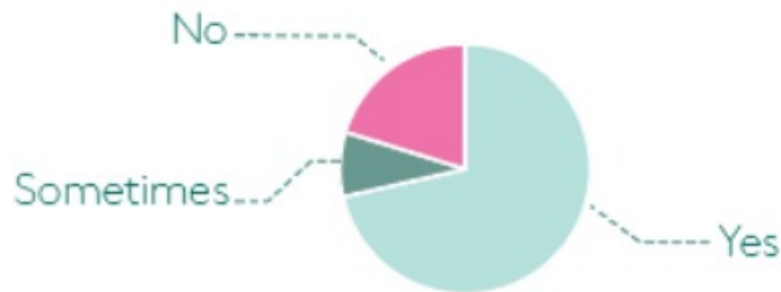
Focus Group Members Use Parks:



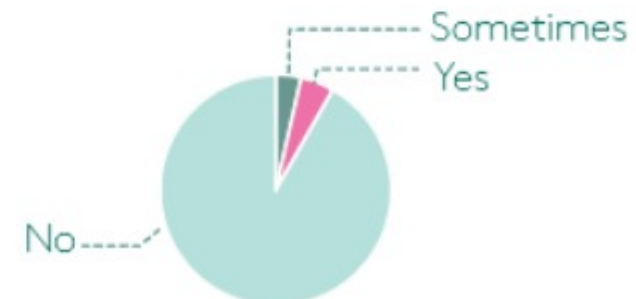
Percentage of Focus Group Members that Feel Welcome in Parks:



Percentage of Focus Group Members That Feel Safe in Parks:



Percentage of Focus Group Members that Have Experienced Discrimination in Parks:



Common Themes



Fitness and Play



Comfortable Environment



New Infrastructure



Community

Desired Park Features Across Focus Groups

Fitness and Play

38

- Playgrounds
- Multi-generational Equipment
- Multi-Sport court
- Trails and Loop Paths
- Dry Sports Fields
- Skate Park
- volleyball
- basketball
- Frisbee Golf

Comfortable Environment

33

- Security
- Picnic tables, and shelters
- Benches and Rest Areas
- General Maintenance

New infrastructure

16

- Lighting
- Restrooms
- Water Fountain
- Parking

Community

10

- Off-leash Dog Area
- Movies
- Spray parks and Pools
- Community Art and Advertisement

85

FOCUS GROUP MEMBERS

Outliers + Stories

10/10 Latinx Focus Group Members Feel Unsafe at Lynnwood Parks.

"I like gathering for family relaxation, yoga and meditation at the park."

2 members of the COFA focus group go to Everett parks because they feel safer than Lynnwood parks.

"I'm concerned with safety at Daleway park due to the shooting last year (2022)."

5/10 Ukrainian and Russian Focus Group Members Feel Unsafe at Parks

"It's hard to travel to parks when there are no sidewalks."

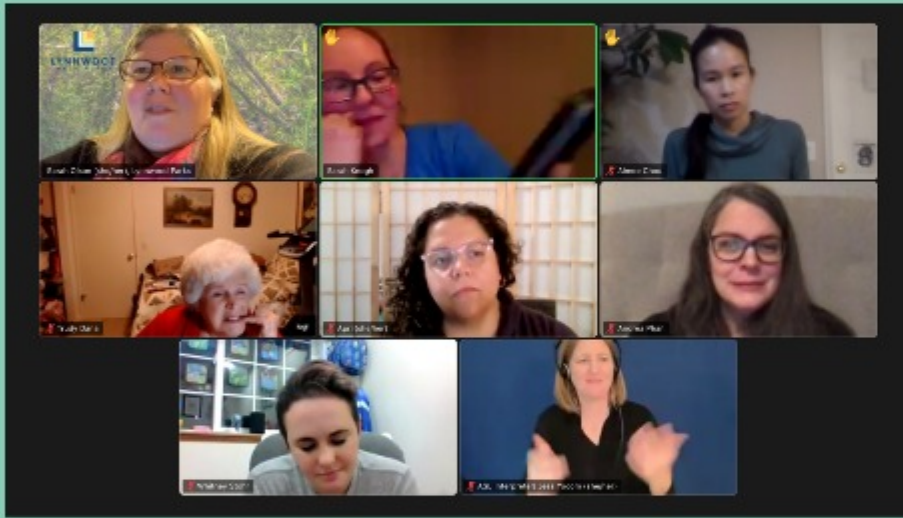
"I have safety concerns with playgrounds near roads. I'm worried kids could run out into the street."

"Parks feel unsafe when there are a lot of homeless people or drug dealers or drug users."



Community Focus Groups

All-Abilities Focus Group



Comfortable Environment

- Accessible surfacing for trails and play (Rubber PIP, Concrete, synth. turf-- no wood chips)
- Access to nature
- Safety
- Barriers to accessing parks (poor sidewalk conditions and transportation)

New Infrastructure

- Lighting
- Changing stations/ Accessible restrooms
- Parking near restrooms and fenced playgrounds.

Fitness and Play

- Inclusive and accessible fitness and play equipment (ability and age range)
- Accessible nature trails and loop paths

Stories

"Not every child that uses a wheelchair has the upper arm strength or mobility to use a playground transfer station or crawl. Having fully accessible play features is important."

"My kid loves to spin!"

"Porta-potties are a big issue for kids that have sensory or cognitive disabilities."

"Flat spray parks are good for children with mobility issues."

"Parks need a range of play equipment suitable for young children to teens."

"Having a couple options of accessible equipment spaced out is beneficial to immunocompromised children or family members."

"Access to nature and forests is very important."

"All-abilities playgrounds are so popular and too crowded to visit sometimes."

"We're always looking for accessible forested trails to "hike" immersed in nature and able to wheel around."

"Fences around playgrounds are needed for the safety of children that wander, especially near parkings lots and roads."

"Parking that is far from bathrooms or playgrounds is an issue."

"Adult-sized changing tables are needed, especially at spray parks."

"Woodchips are a nightmare for wheelchair users."



All Abilities Focus Group

General Outreach

PARKS LOVE

Common Themes



Fitness/Play

- Playgrounds
- Trails and Loop paths
- Multi-Sport courts
- Grass sports field

Comfortable Environment

- Accessible and Inclusive (Facilities, equipment, and surfacing)
- Picnic tables and shelters
- signage and wayfinding
- Benches and rest areas

Stories

"Additional trails in the Lund's Gulch area are a huge opportunity. We could have a world class trail system in our backyard, connecting to the already popular Meadowdale Beach."

"Covered play equipment to protect from rain or sun."

"There are so many Pickleball players searching area-wide for covered Pickleball courts."

North Lynnwood Park ("Dragon Park") is in dire need of upgrades! This is quite a well-utilized park from what I have seen. The play equipment is pretty dilapidated and small. Barely anything for the 2-5 year olds. For bigger kids, it's just tiny. The park has a ton of underutilized space.

"P-Patch for apartment dwellers to benefit and have access to community garden space."

"More events like Shakespeare at the park."

"The play equipment at North Lynnwood Park is dangerous."

"More Programming!"

"In need of sidewalk provisions to improve access at Lynndale Park."



**General Outreach
Events and Surveys**

Overlapping Themes

Comfort

- Seats, picnic tables and shelter access
- Access to nature (loop trails, shade trees, sensory planting, forests and under story)
- Perception of safety
- Clean Restrooms

Fitness + Play

- Universally accessible playgrounds
- Multi-sport courts/ Grass / synth. turf sports fields
- Multi-generational equipment

Community

- Off-leash dog areas
- Spray Parks
- Programming (cultural/community events)

New Infrastructure

- Lighting
- Parking
- New Features

Select an overlapping main theme and sub-category that is most important to you.

Is there a missing CoDesign sub-category or conversation that is more important to you?

Discussion

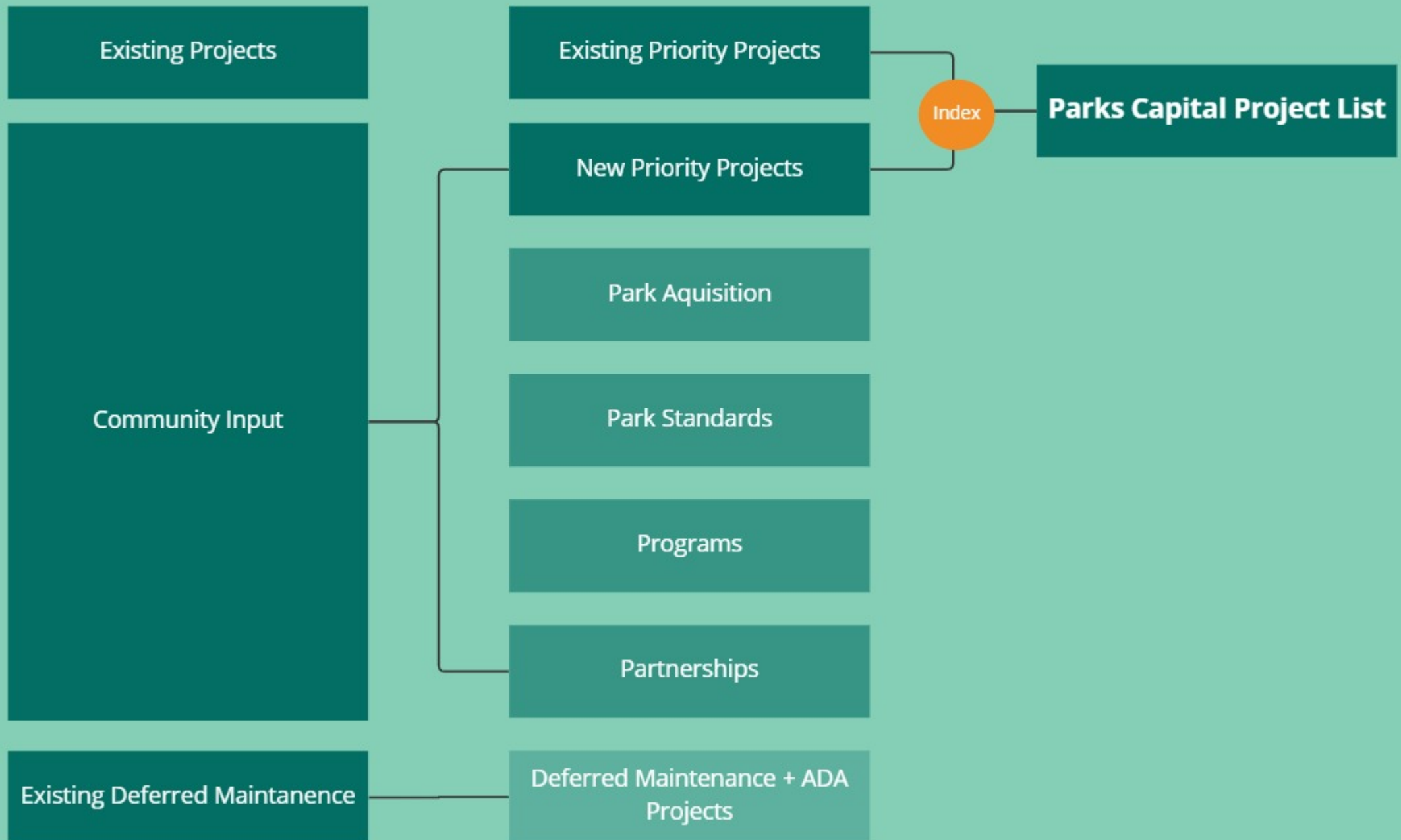
comfort, perception of safety	Comfort / Nature	Comfort, universally accessible playgrounds	Community programming Cultural event	All of those things really	Water access, Stream restoration
I notice Meadowdale Playfields wasn't on the park list, Thats the busiest park?					

Project Prioritization

P  R K S  L O V E

PARK PLANNING CATEGORIES

OUTCOME



Existing Index

Parks, Recreation & Cultural Arts Department 2023-2024 CAPITAL PRIORITIZATION												
Proposed Projects	PARC Strategic Directions						Equity		Park Access	ADA	Final Score	
	#1	#2	#3	#4	#5	Average	Population Serv	Equity				
1	Scriber Lake Park Renovation, Phase II	1	2	2	1	2	1.60	2	2	0	2	1.52
2	Scriber Creek Trail Improvements Phase II - Construction	1	2	0	1	2	1.20	2	2	0	2	1.44
3	Maple Mini Park - Playground Replacement	2	2	2	1	0	1.40	2	1	0	2	1.28
4	Interurban Trail Improvements	1	2	0	0	0	0.60	2	2	0	1	1.12
5	Pioneer Park - Playground Replacement	2	2	2	1	0	1.40	1	1	0	2	1.08
6	Senior/Teen Facility Expansion	2	0	0	0	0	0.40	2	1	0	1	0.88
7	Rowe Park Development	2	2	0	2	1	1.40	2	0	1	0	0.88
8	Alderwood Middle School Joint Development	2	1	2	2	0	1.40	1	2	0	0	0.88
9	Town Square Park Acquisition & Development	1	2	0	2	1	1.20	1	2	0	0	0.84
10	Recreation Center Covered Walkway	1	1	2	0	0	0.80	2	1	0	0	0.76
11	Recreation Center Expansion, Phase II	0	1	0	2	1	0.80	2	1	0	0	0.76
12	Strategic Park Acquisitions	0	2	2	2	1	1.40	0	1	1	0	0.68
13	Village Green Park Pavilion	1	2	1	2	1	1.40	0	2	0	0	0.68
14	Lund's Gulch OS Master Planning	0	1	0	2	2	1.00	1	0	0	1	0.60
15	Scriber Creek Trail Extension Acquisition	0	0	0	2	2	0.80	0	0	2	0	0.56
16	Alderwood Transition Area Mini Park	1	2	0	1	0	0.80	0	1	1	0	0.56
17	Scriber Creek Trail Extension Master Plan	0	1	1	2	2	1.20	0	0	1	0	0.44
18	Lund's Gulch OS Preservation, Phase IV	0	2	1	1	2	1.20	0	0	0	0	0.24

Community Vision: be a regional model for a sustainable, vibrant community with engaged citizens and an accountable government. To invest in preserving and expanding parks, recreation and community programs.

<p>PARC Plan Strategic Directions</p> <ul style="list-style-type: none"> #1 Foster a healthy and active community #2 Create great parks and spaces #3 Ensure sound management and maintenance #4 Prepare for the future #5 Encourage connectedness 	<p>Demographic Equity (Equity Map)</p> <table border="0"> <tr><td>NW</td><td>0</td></tr> <tr><td>NE</td><td>1</td></tr> <tr><td>South</td><td>2</td></tr> </table> <p>Park Access (Park Serve)</p> <table border="0"> <tr><td>Very High</td><td>2</td></tr> <tr><td>High</td><td>1</td></tr> <tr><td>Less than High</td><td>0</td></tr> </table>	NW	0	NE	1	South	2	Very High	2	High	1	Less than High	0	<p>ADA Barrier Removal</p> <table border="0"> <tr><td>Low</td><td>0</td></tr> <tr><td>Med</td><td>1</td></tr> <tr><td>High</td><td>2</td></tr> </table> <p>Population Served</p> <table border="0"> <tr><td><2000</td><td>0</td></tr> <tr><td>2000-3000</td><td>1</td></tr> <tr><td>>3000</td><td>2</td></tr> </table>	Low	0	Med	1	High	2	<2000	0	2000-3000	1	>3000	2	<p>Future Considerations</p> <ul style="list-style-type: none"> Facility Demand Past Investment Feasibility Grant Availability
NW	0																										
NE	1																										
South	2																										
Very High	2																										
High	1																										
Less than High	0																										
Low	0																										
Med	1																										
High	2																										
<2000	0																										
2000-3000	1																										
>3000	2																										

Other Factors

Outcome



Inclusion

Universal
ADA Access

Safety

Population
Served

- Where are there opportunities to improve universal (ADA) access within parks for all ages and abilities?
- What projects help parks feel more safe and secure?
- How many Lynnwood residents are served by a project?

Inclusion

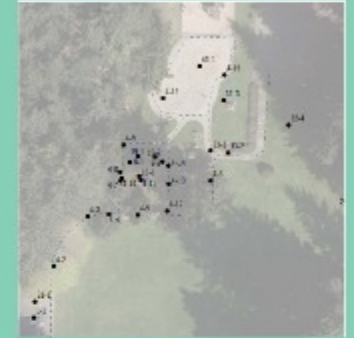
Factor

Metric

Map/Score

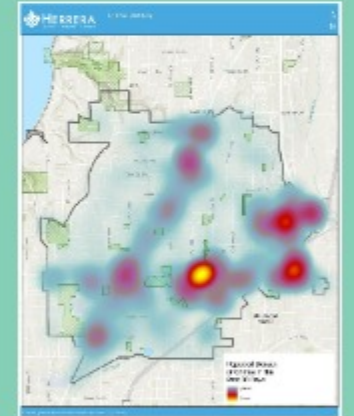
Universal ADA Access

ADA Transition Plan & Universal Design score



Safety

City safety and crime data and park perceived safety factor including vegetation and lighting



Population Served

Number of Community members Served

Map TBD

Discussion

does population served really fit into Inclusion	What does immunocompromised have to do with inclusion/accessibile playgrounds?				

Equitable Access

Geographic
Access

Demographic
Equity

Partnership
Opportunities

- Where are there opportunities to improve multi-modal park access?
- What park projects can benefit communities with high income inequality?
- What are the partnership and/or programming opportunities that amplify park projects?

Equitable Access

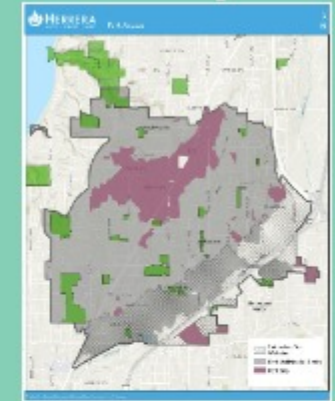
Factor

Metric

Map

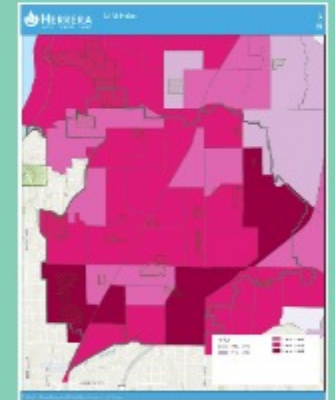
Geographic Access

Proximity to parks, trails, or open space
and/or AAA street network.



Demographic Equity

Income inequality



Partnership
Opportunities

Coordinated City Project Lists



Discussion

what if the gini index changes for an area like lynwood mall if those demographics change over time? - "we use census data which changes every 10 years"

The different factors are tied together, Likes the maps and it's clear what we're trying to convey.



Health

Community Health

- What project opportunities positively impact community-scale health disparities?

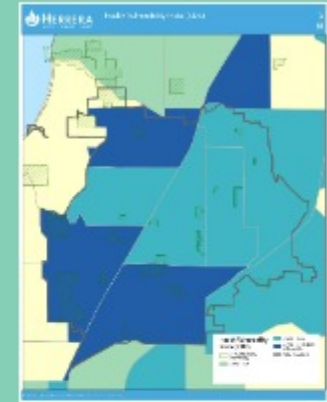
Health Factor

Metric

Map

Community Scale Health
Inequities

Health Vulnerability



Environmental Health Disparities



Frequent Mental Health Distress



Discussion

I'm not sure health can be used as a statistical metric but it does become a result of all other metrics

Is it easy to measure a communities health?

what about hospitalizations or usage of mental health facilities?

Jenn- A lot of the data on health is sensitive and not shared publicly. There tends to be a strong correlation between some of the demographic groups that we do have access to. We often will see the same outcomes when we lay health and income data next to each other. We will ultimately be capturing some of that data together.

Maybe we consider health baked in.

Increased use of parks will likely directly correlate with increased community health

There's also the issue that, thanks to covid, almost all communities are currently experiencing increased mental health struggles

there's also a chance that income disparity will also line up with health issues and health vulnerable. Especially with the health market that we have

jenn- sometimes the trends are almost identical.

Take a look at the university of Washington's global disease research <https://www.healthdata.org/state-toolbox/globals-data-sources>

Jenn- it's difficult to get information that is more granular than census data.

Free cpr training in the park event?

Environmental Resilience

Healthy Forest

Stormwater

Urban Heat
Island

- Where are the high priority areas for forest protection, enhancement, restoration in the Parks system?
- How can parks best address urban flooding, improve water quality and utilize green storm water infrastructure?
- How can parks mitigate urban heat island and its associated health impacts?

Environmental Resilience

Factor

Metric

Map

Healthy Forest

Forest Assessment Maps

Map TBD

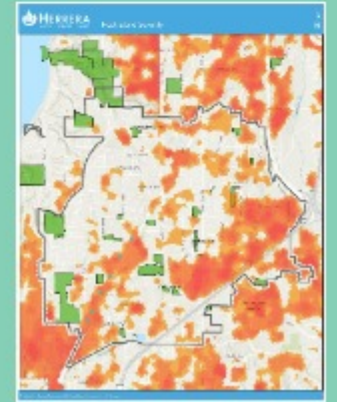
Stormwater

Flood zone map, wetland and riparian zone maps, water quality maps



Urban heat island

Urban heat island map



Discussion

I was really excited to notice last weekend some new trees planted at Scriber Lake Park! Thank you!

Any potential for park gray water collection that could then be used to help maintain landscaping?

Are there any downsides to planting trees?

I'm really interested in the gray water, too

lighting that can disrupt habitat

Do we need a "nature" category? naturalized environment, boardwalk/train in forest, stream restoration

Next Steps...

Meeting #6 - March 29

- Review index with draft projects list
- Discuss how to prioritize factors

Spring (online)

- Review draft report content / Public Open House

Summer - July 17th or 18th (TBA)

- Celebration & Debrief Meeting