

CoDesign Meeting #6

Project Prioritization

PARKS LOVE

Icebreaker

"What Lynnwood Park do you frequent the most and what do you do there?"

[PollEv.com/lynnmcbride763](https://www.pollEv.com/lynnmcbride763)

P  R K S  L O V E

Agenda

Project Update

Meeting Recap

Index - Park Screening (Mapping)

Index - Project Screening (Questions)

Results & Weighting Exercises

Next Steps

Project Update

Forest Assessment Recommendations
Park Asset Condition
Park Valuation
Index & Prioritization Model

Define and Value New Projects
Capital Plan Report
Share With Community
NRPA Site Visit



CoDesign Meetings

1. Inclusion & Welcoming
2. Equitable Access
3. Health
4. Environmental Resilience
5. Community Engagement Summary
6. [Index](#)

Focus Areas



Community Engagement



GENERAL
ENGAGEMENT



DIRECT
ENGAGEMENT

CO-DESIGN

- Fair on 44th
- Online Survey
- Meet Me at the Park
- Sandlot Cinemas
- Lynnwood Rec Center

- RISNW Focus Groups
- All-Abilities Focus Group
- ESD Accessibility Awareness Event
- Ethiopian Church Event
- Project Girl
- S. Lynnwood Park Listening Session

- Inclusion
- Equitable Access
- Health
- Environmental Resilience
- Project Prioritization

Community Engagement Themes

Comfort

- Seats, picnic tables & shelter
- Access to nature
- Perception of safety
- Clean Restrooms

Fitness + Play

- Universally accessible playgrounds
- Spray Parks
- Multi-sport courts/ Grass / synth. turf sports fields
- Multi-generational equipment

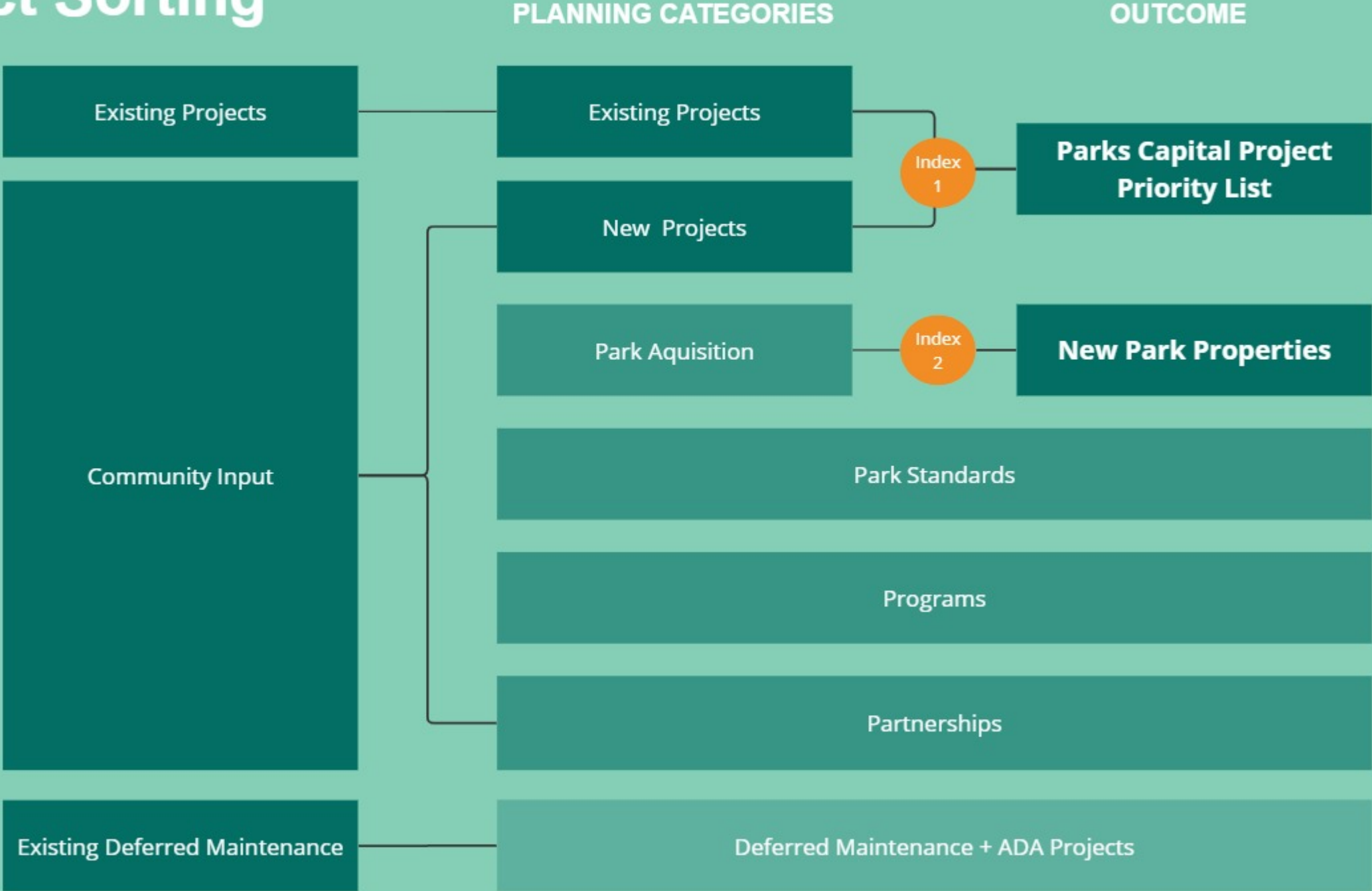
Community

- Off-leash dog areas
- Programming (cultural/community events)

Infrastructure

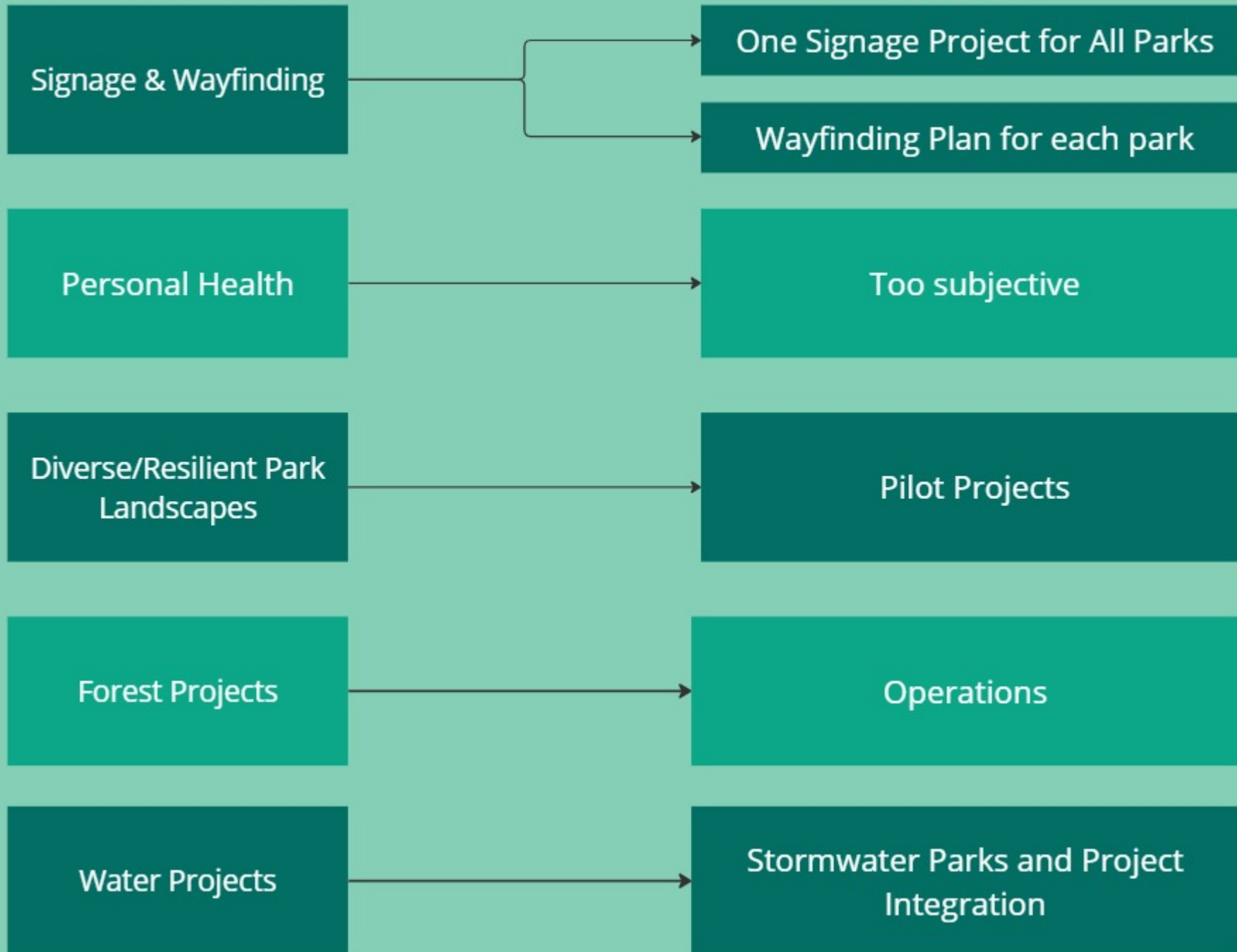
- Lighting
- Parking
- Restroom Enhancements

Project Sorting



OTHER INDEX FACTORS

OUTCOME



Existing Index

Parks, Recreation & Cultural Arts Department 2023-2024 CAPITAL PRIORITIZATION

Proposed Projects	PARC Strategic Directions						Equity Factors				Final
	#1	#2	#3	#4	#5	Average	Poplotion Served	Equity	Park Acces	ADA	Score
1 Scriber Lake Park Renovation, Phase II	1	2	2	1	2	1.60	2	2	0	2	1.52
2 Scriber Creek Trail Improvements Phase II - Construction	1	2	0	1	2	1.20	2	2	0	2	1.44
3 Maple Mini Park - Playground Replacement	2	2	2	1	0	1.40	2	1	0	2	1.28
4 Interurban Trail Improvements	1	2	0	0	0	0.60	2	2	0	1	1.12
5 Pioneer Park - Playground Replacement	2	2	2	1	0	1.40	1	1	0	2	1.08
6 Senior/Teen Facility Expansion	2	0	0	0	0	0.40	2	1	0	1	0.88
7 Rowe Park Development	2	2	0	2	1	1.40	2	0	1	0	0.88
8 Alderwood Middle School Joint Development	2	1	2	2	0	1.40	1	2	0	0	0.88
9 Town Square Park Acquisition & Development	1	2	0	2	1	1.20	1	2	0	0	0.84
10 Recreation Center Covered Walkway	1	1	2	0	0	0.80	2	1	0	0	0.76
11 Recreation Center Expansion, Phase II	0	1	0	2	1	0.80	2	1	0	0	0.76
12 Strategic Park Acquisitions	0	2	2	2	1	1.40	0	1	1	0	0.68
13 Village Green Park Pavilion	1	2	1	2	1	1.40	0	2	0	0	0.68
14 Lund's Gulch OS Master Planning	0	1	0	2	2	1.00	1	0	0	1	0.60
15 Scriber Creek Trail Extension Acquisition	0	0	0	2	2	0.80	0	0	2	0	0.56
16 Alderwood Transition Area Mini Park	1	2	0	1	0	0.80	0	1	1	0	0.56
17 Scriber Creek Trail Extension Master Plan	0	1	1	2	2	1.20	0	0	1	0	0.44
18 Lund's Gulch OS Preservation, Phase IV	0	2	1	1	2	1.20	0	0	0	0	0.24

Community Vision: be a regional model for a sustainable, vibrant community with engaged citizens and an accountable government. To invest in preserving and expanding parks, recreation and community programs.

PARC Plan Strategic Directions

- #1 Foster a healthy and active community
- #2 Create great parks and spaces
- #3 Ensure sound management and maintenance
- #4 Prepare for the future
- #5 Encourage connectedness

Demographic Equity (Equity Map)

NW	0
NE	1
South	2

Park Access (Park Serve)

Very High	2
High	1
Less than High	0

ADA Barrier Removal

Low	0
Med	1
High	2

Population Served

<2000	0
2000-3000	1
>3000	2

Future Considerations

- Facility Demand
- Past Investment
- Feasibility
- Grant Availability

Example Cut Sheet - Lynndale Park



CAPITAL PROJECTS	FOCUS AREA	IMPROVEMENTS
KAMP KOOKAMUNGA		Facility Remodel Parking Lot Illuminate Basketball
NW/SW PARKING & ACCESS		Parking Opening Restroom Upgrade
SKATE PARK RENOVATION & EXPANSION		Skate Features Seating Pavilion Illuminate Basketball
TENNIS COURT RENOVATION		Resurfacing Pickleball Striping Seating Pavilion Illuminate Basketball

ADDITIONAL PROJECTS	FOCUS AREA	IMPROVEMENTS
ILLUMINATE DOG PARK		Lighting Pavilion Seating Illuminate Basketball
ENVIRONMENTAL RESILIENCY PROJECTS		Forest Restoration Stormwater Trails

DEFERRED MAINTENANCE + ADA PROJECTS
GRAFFITI REMOVAL / INFRASTRUCTURE PAINTING
TRASH RECEPTACLE REPLACEMENTS
ENTRANCE & PATH IMPROVEMENTS
LANDSCAPE IMPROVEMENTS / MAINTENANCE

PROGRAM OPPORTUNITIES

- ① Wildlife Education
- ② Fitness Classes
- ③ Youth Sports
- ④ Volunteer Planting

PARTNERSHIP OPPORTUNITIES

- Local partner
- Local partner
- Local partner
- Local partner

PARK OPPORTUNITY SCORE

Lynndale is one of the most highly used parks in the Lynnwood by all demographics, while its location is in an area of low equity and resilience opportunity with is correlated with income. The park's infrastructure is intensively used and in need of upgrades to support the park's numerous popular programs. -

Lynndale is one of the most highly used parks in the Lynnwood by all demographics, while its location is in an area of low equity and resilience opportunity with is correlated with income. The park's infrastructure is intensively used and in need of upgrades to support the park's numerous popular programs. -
Lynndale is one of the most highly used parks in the Lynnwood by all demographics, while its location is in an area of low equity and resilience

Park Screening

P  R K S  L O V E

PARK SCREENING (MAPS)

Focus Area Factors

Inclusion

Population

Park Usage

Equitable Access

Recreational Value

Demographic Equity

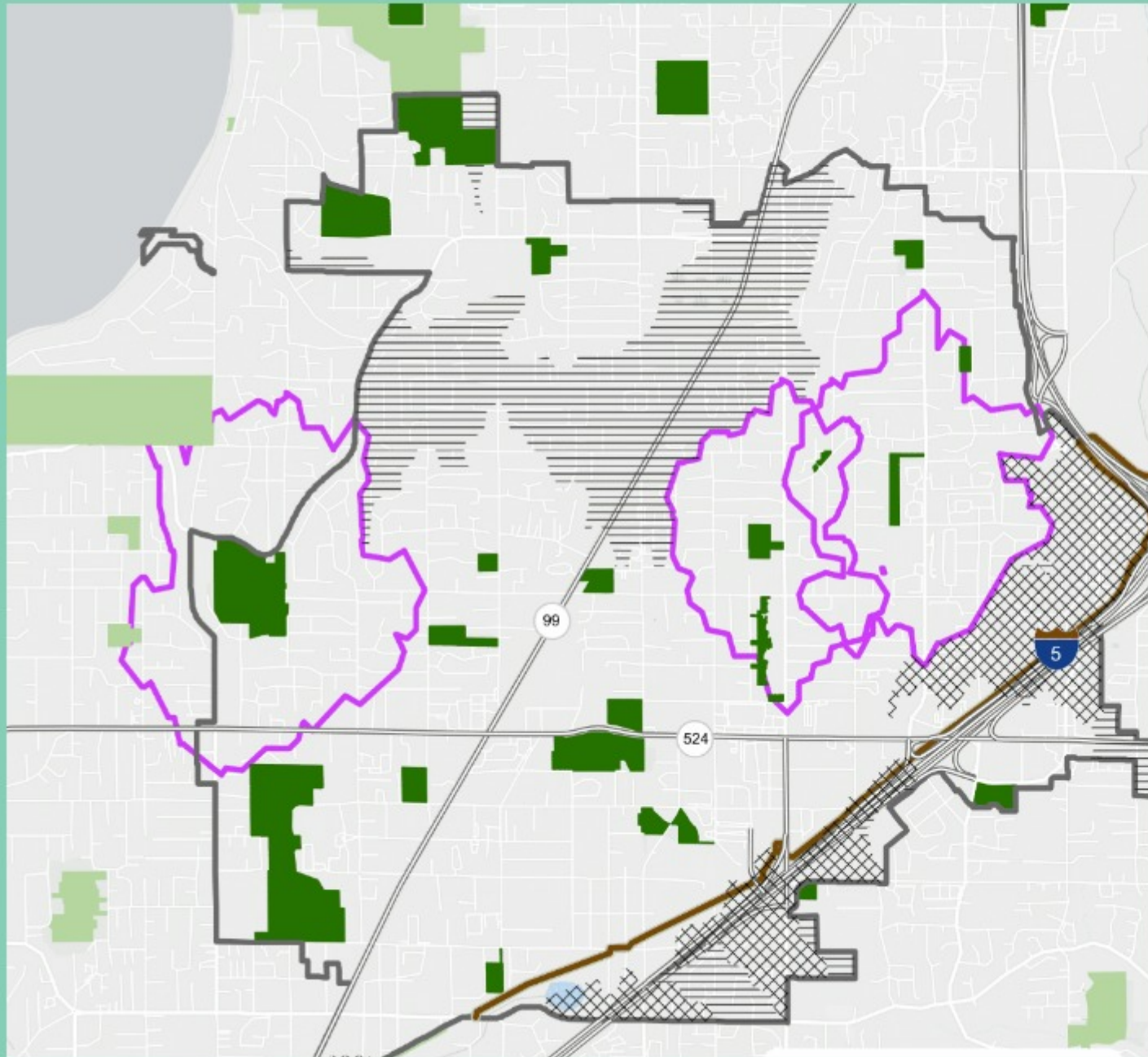
Health

Community Health

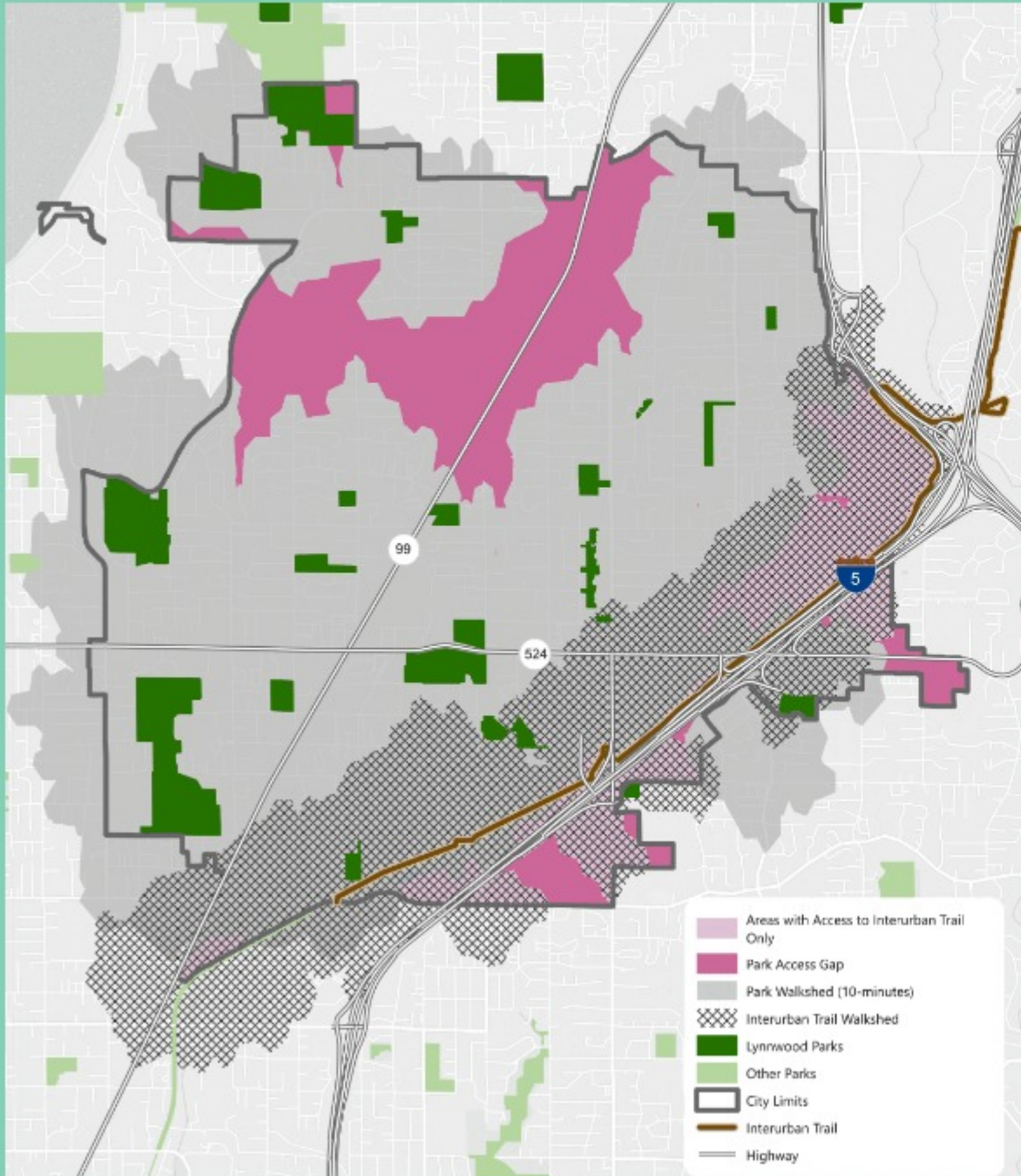
Environmental Resilience

Urban Heat Island

10 Minute Walk Analysis

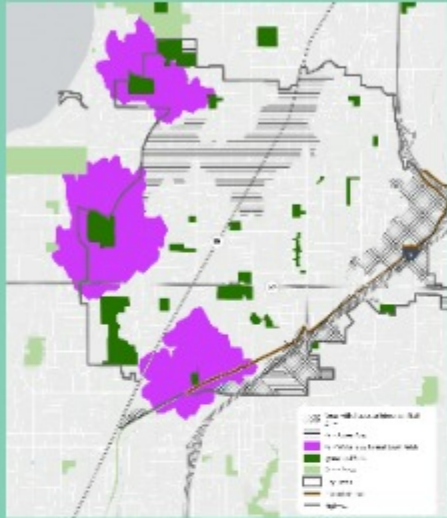


Geographic Park Access

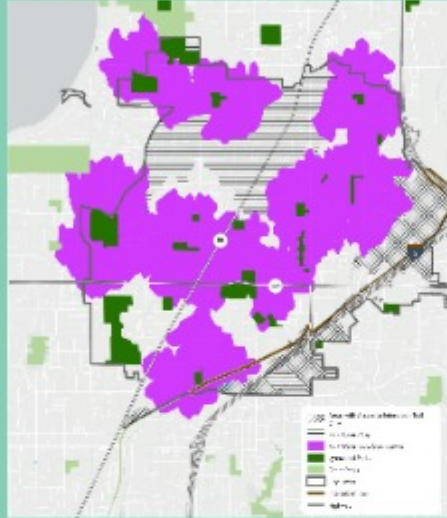


Amenity Access Maps

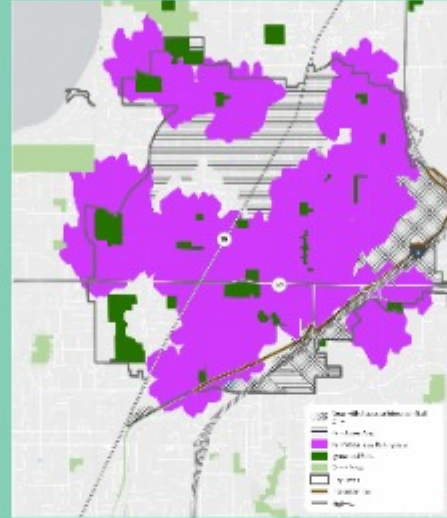
Formal Sport Fields



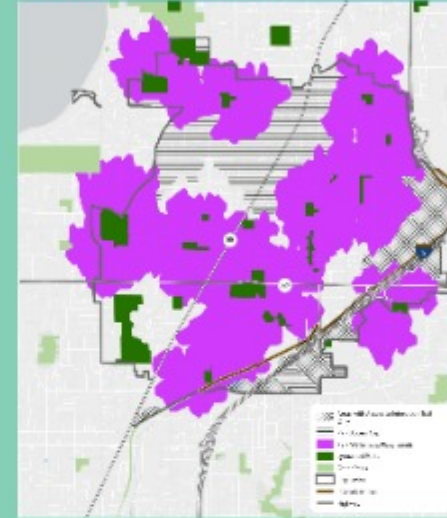
Open Lawn



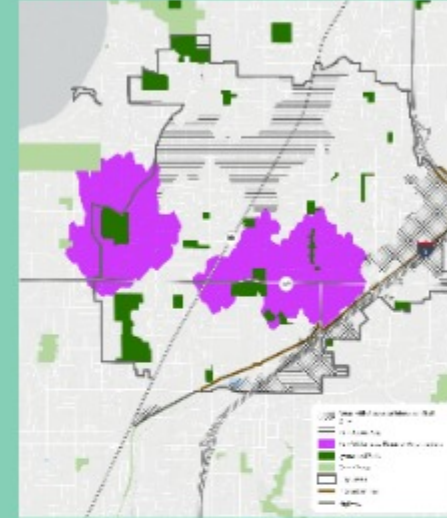
Parking



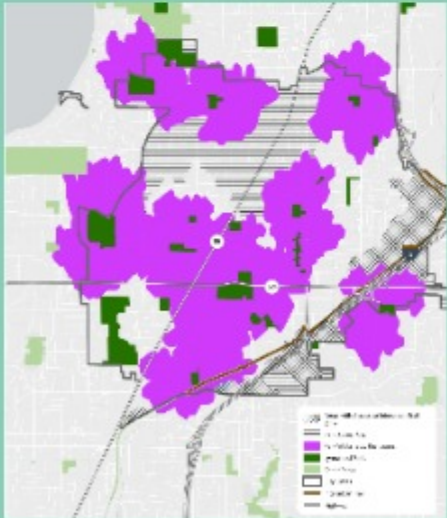
Playgrounds



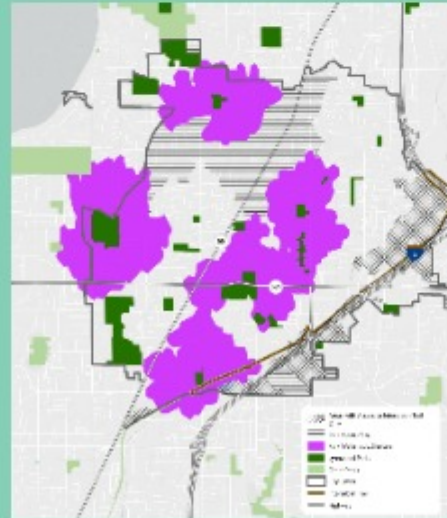
Plaza / Amphitheater



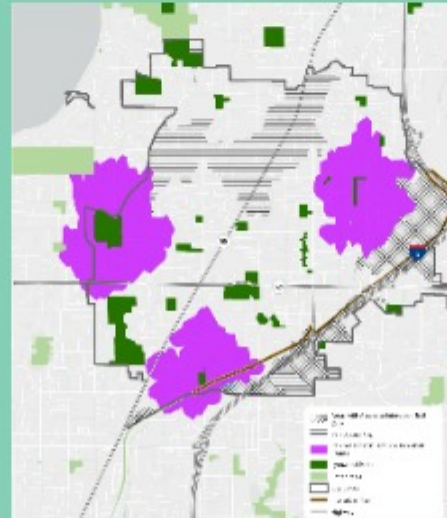
Restrooms



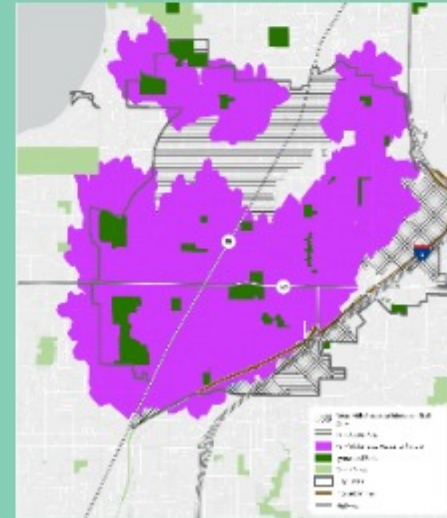
Shelters



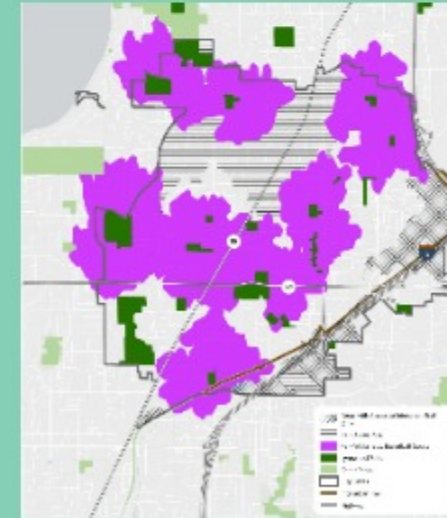
Tennis / Pickleball Courts



Access to Nature

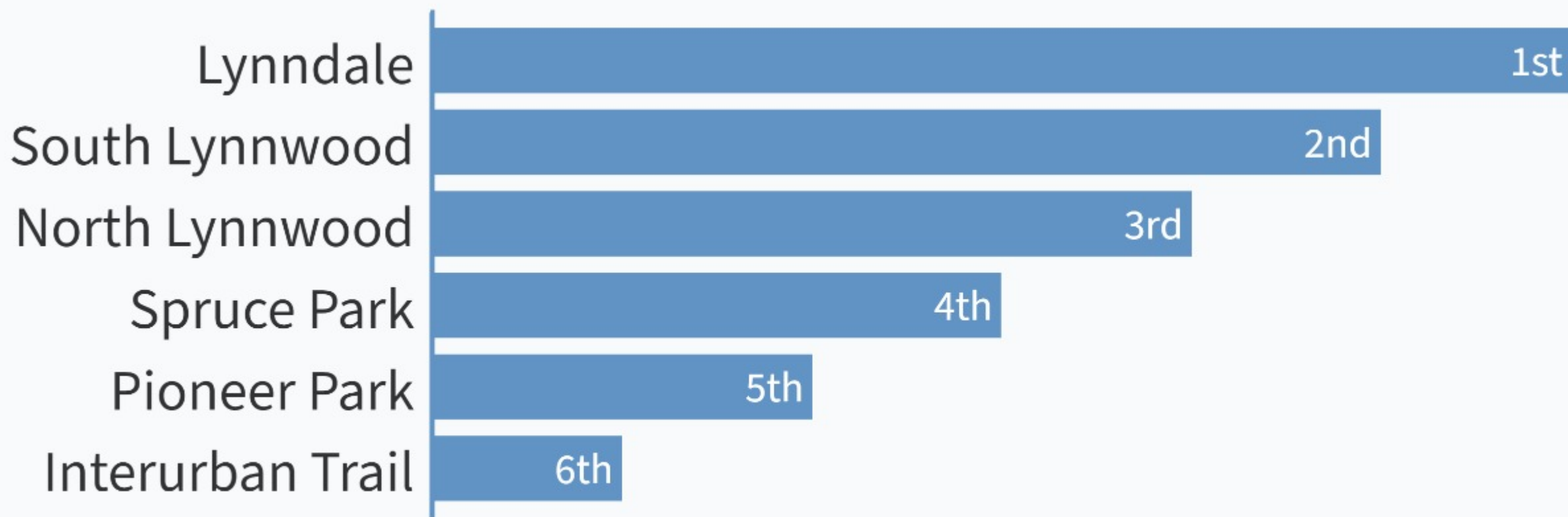


Basketball Courts

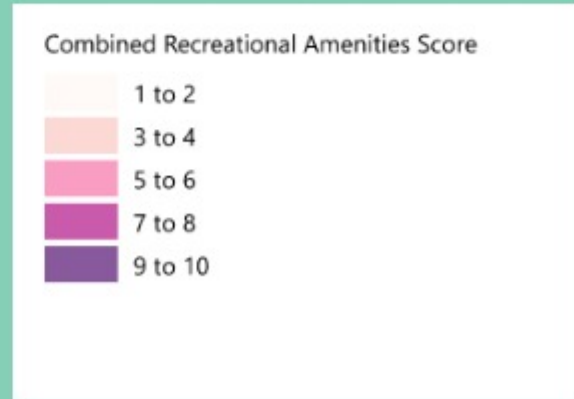
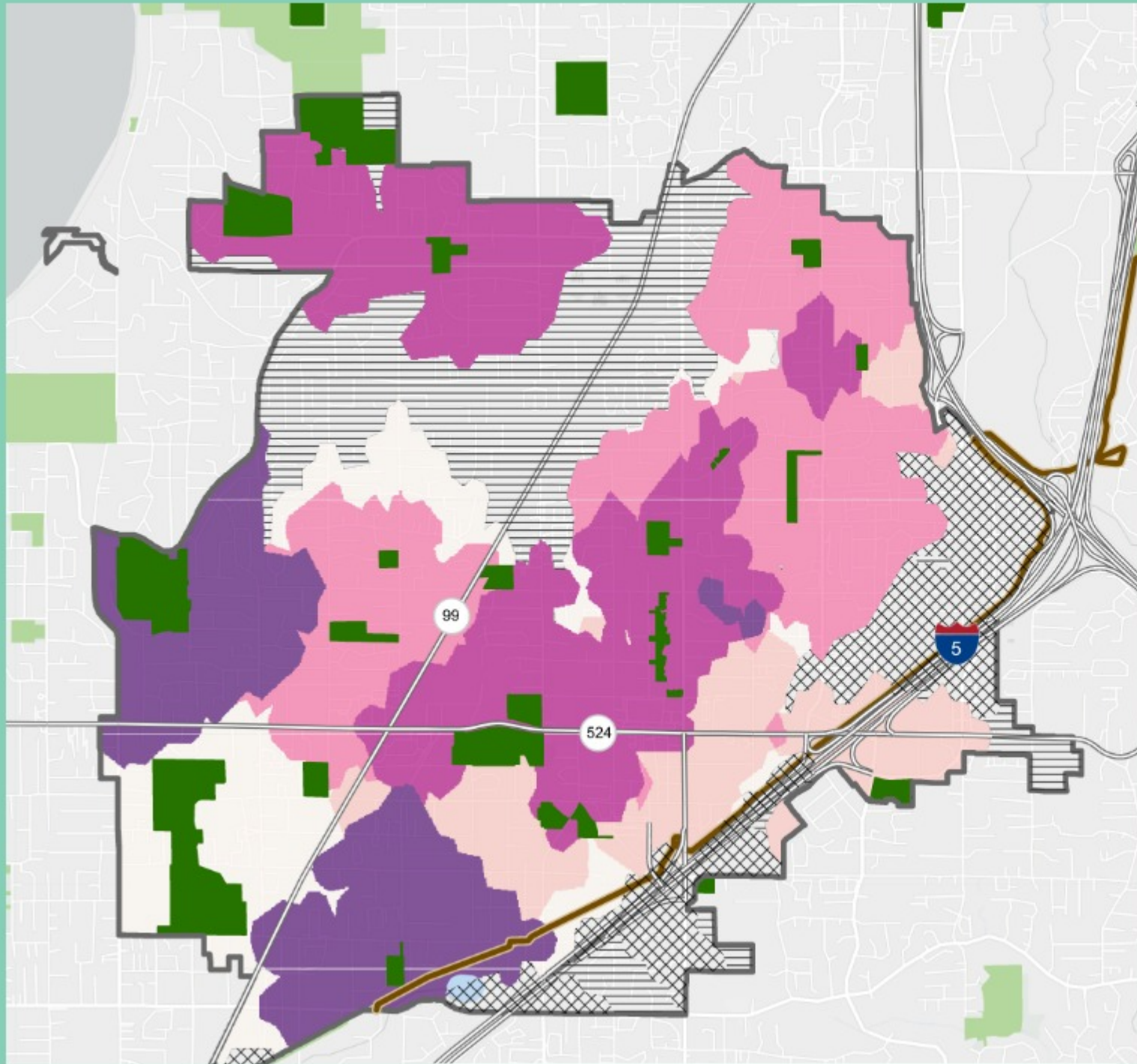


Parks Quiz!

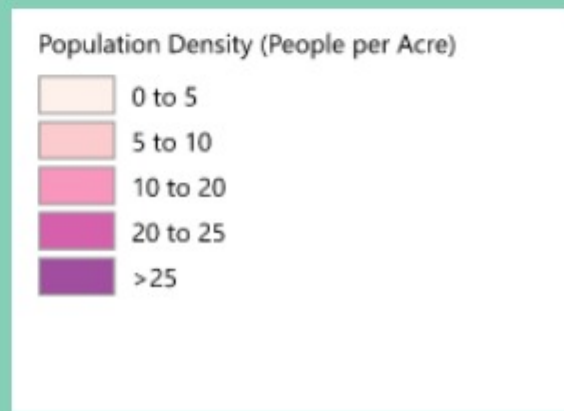
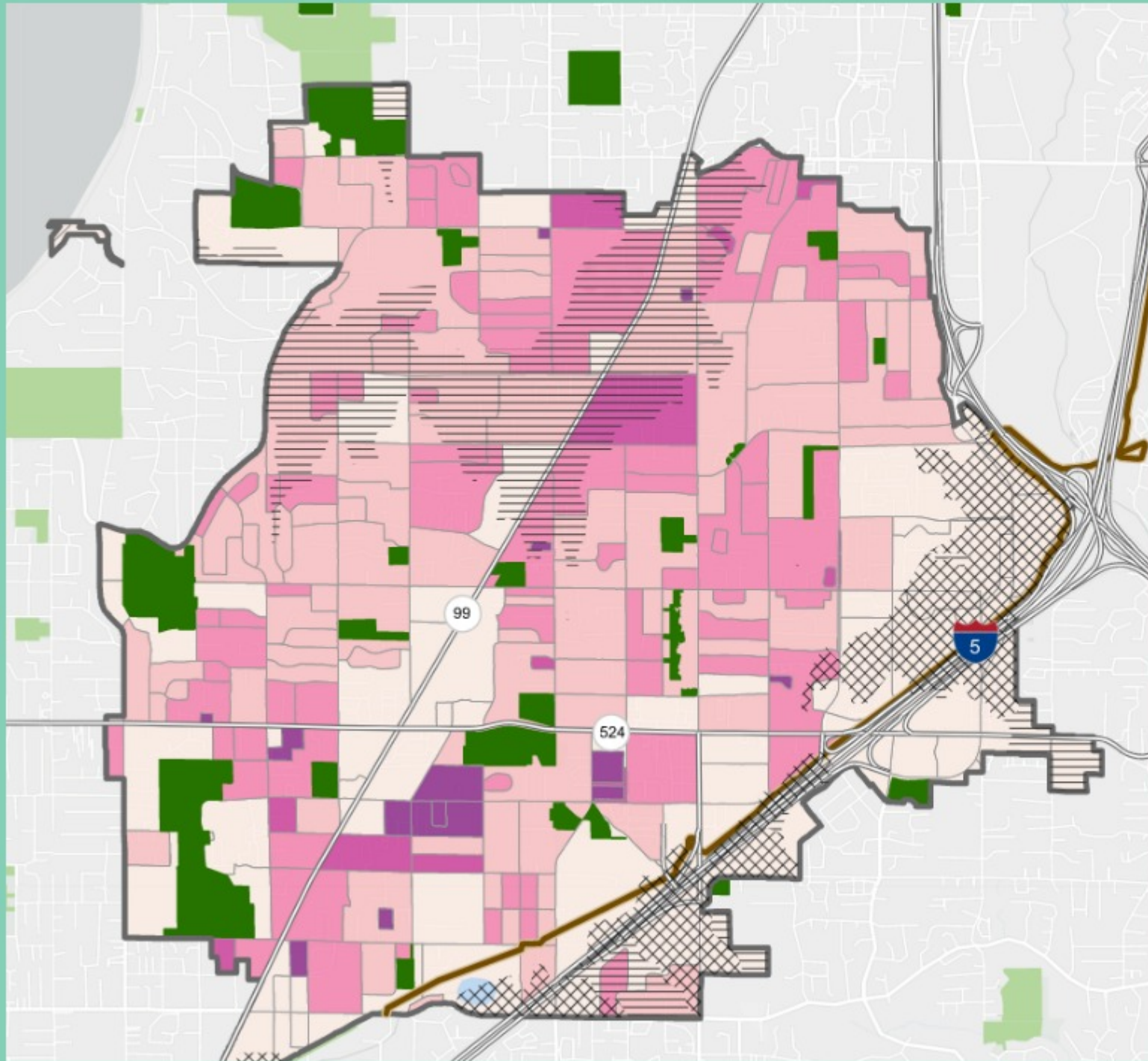
Parks Quiz! Which parks have the highest and lowest recreational amenity score?



Combined Recreational Value

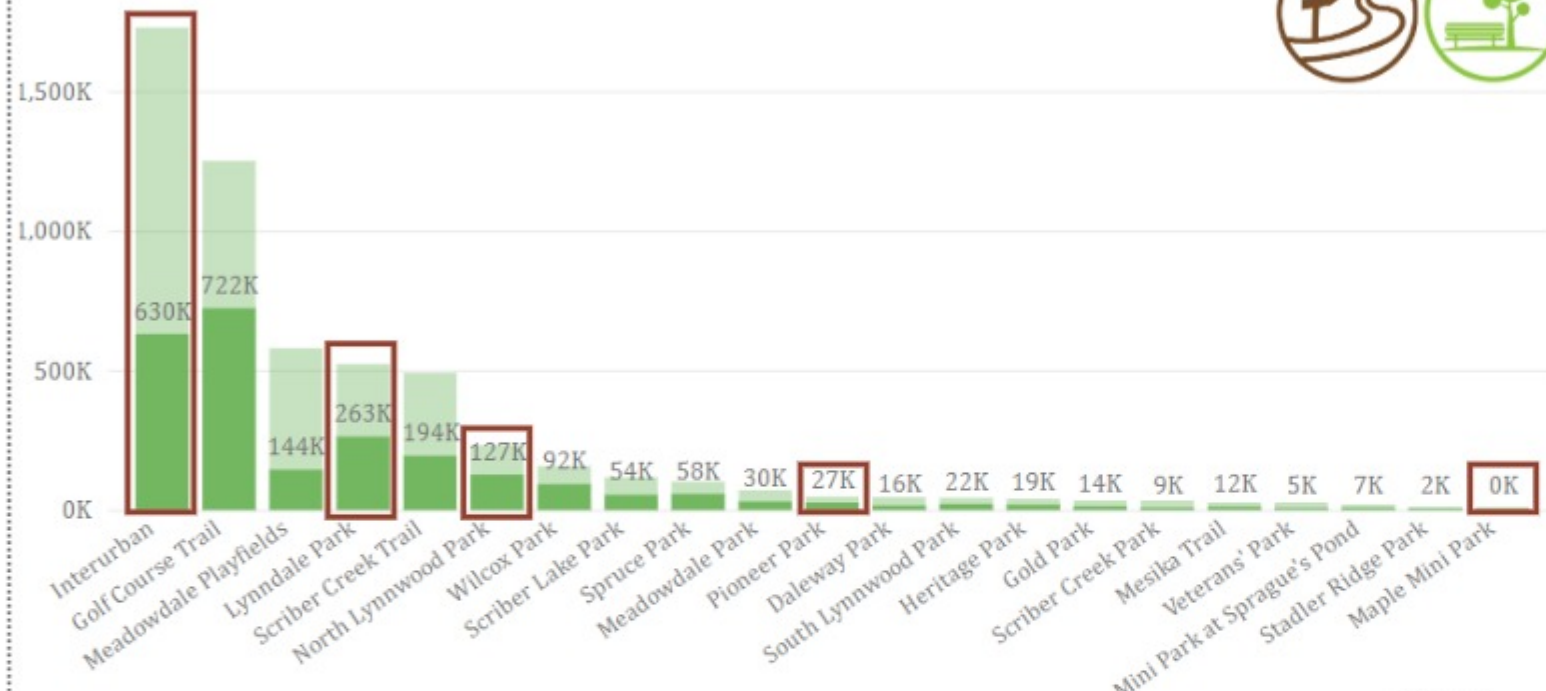


Population



Park Usage

Trips by All Parks and Trails



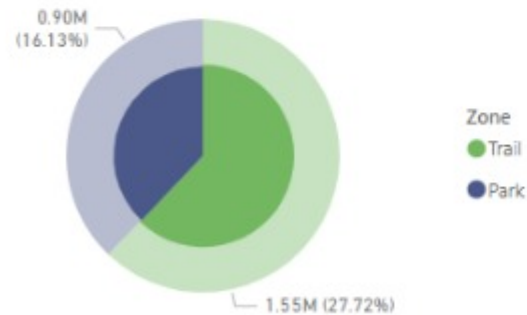
2,446,260

Total Trips

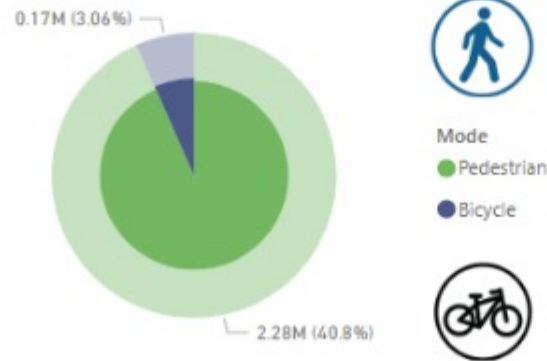
Total Trips

Zone Name	Bicycle	Pedestrian	Total
Golf Course Trail	6,630	715,643	722,273
Interurban	128,299	501,997	630,296
Lynndale Park	9,550	253,126	262,676
Scriber Creek Trail	7,603	186,181	193,784
Meadowdale Playfields	2,099	141,925	144,024
North Lynnwood Park	1,948	124,953	126,901
Wilcox Park	2,920	89,425	92,345
Spruce Park	2,159	55,357	57,516
Scriber Lake Park	1,946	52,224	54,170
Meadowdale Park	1,065	29,200	30,265
Pioneer Park	366	26,462	26,828
South Lynnwood Park	1,825	19,802	21,627
Heritage Park	1,580	17,094	18,674
Daleway Park	1,248	14,753	16,001
Gold Park	427	13,079	13,506
Mesika Trail	213	11,587	11,800
Scriber Creek Park	396	8,304	8,700
Mini Park at Sprague's Pond	396	6,965	7,361
Veterans' Park		4,715	4,715
Stadler Ridge Park		2,433	2,433
Maple Mini Park		365	365
Total	170,670	2,275,590	2,446,260

Trips by Zone (Bicycles & Pedestrians)



Trips by Mode (Parks & Trails)



Year

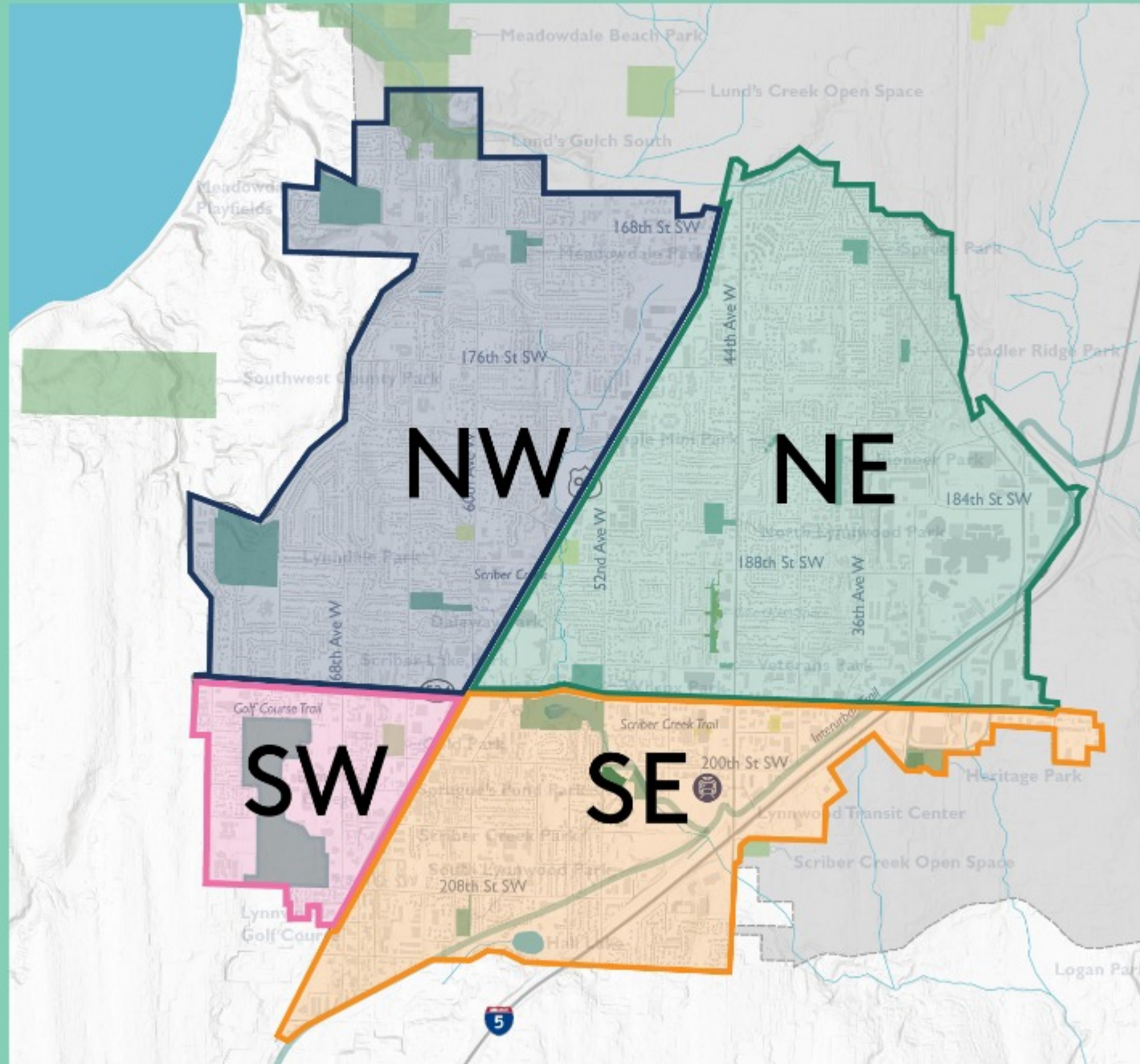
- 2020
- 2019
- 2018

Mode

- Pedestrian
- Bicycle



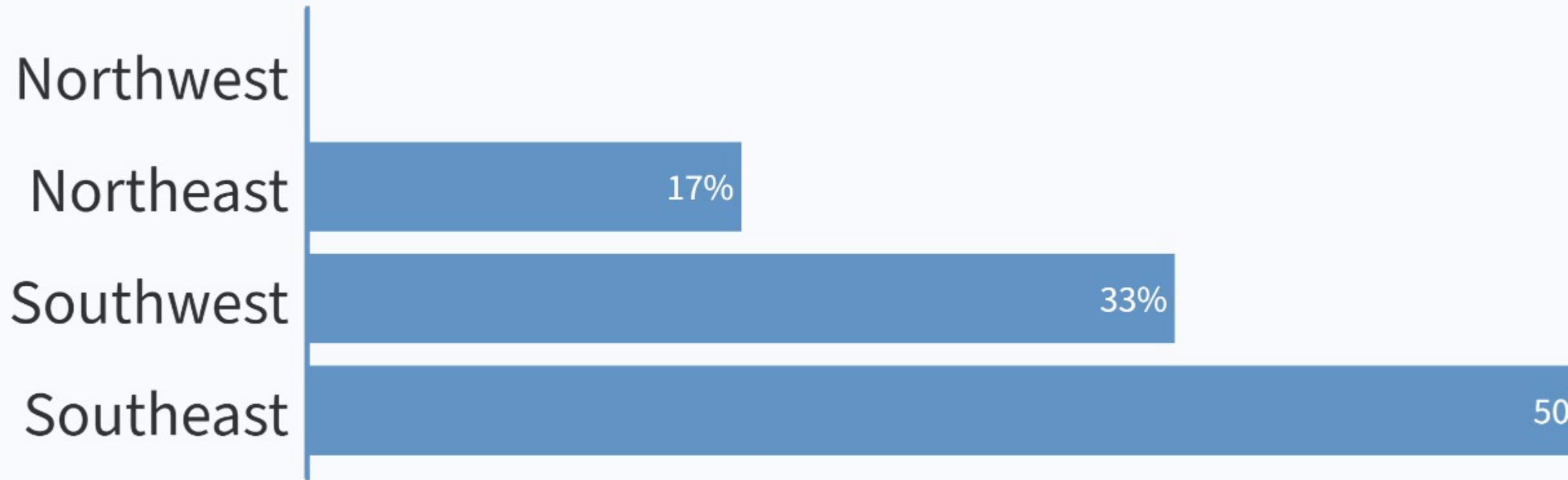
City Regions



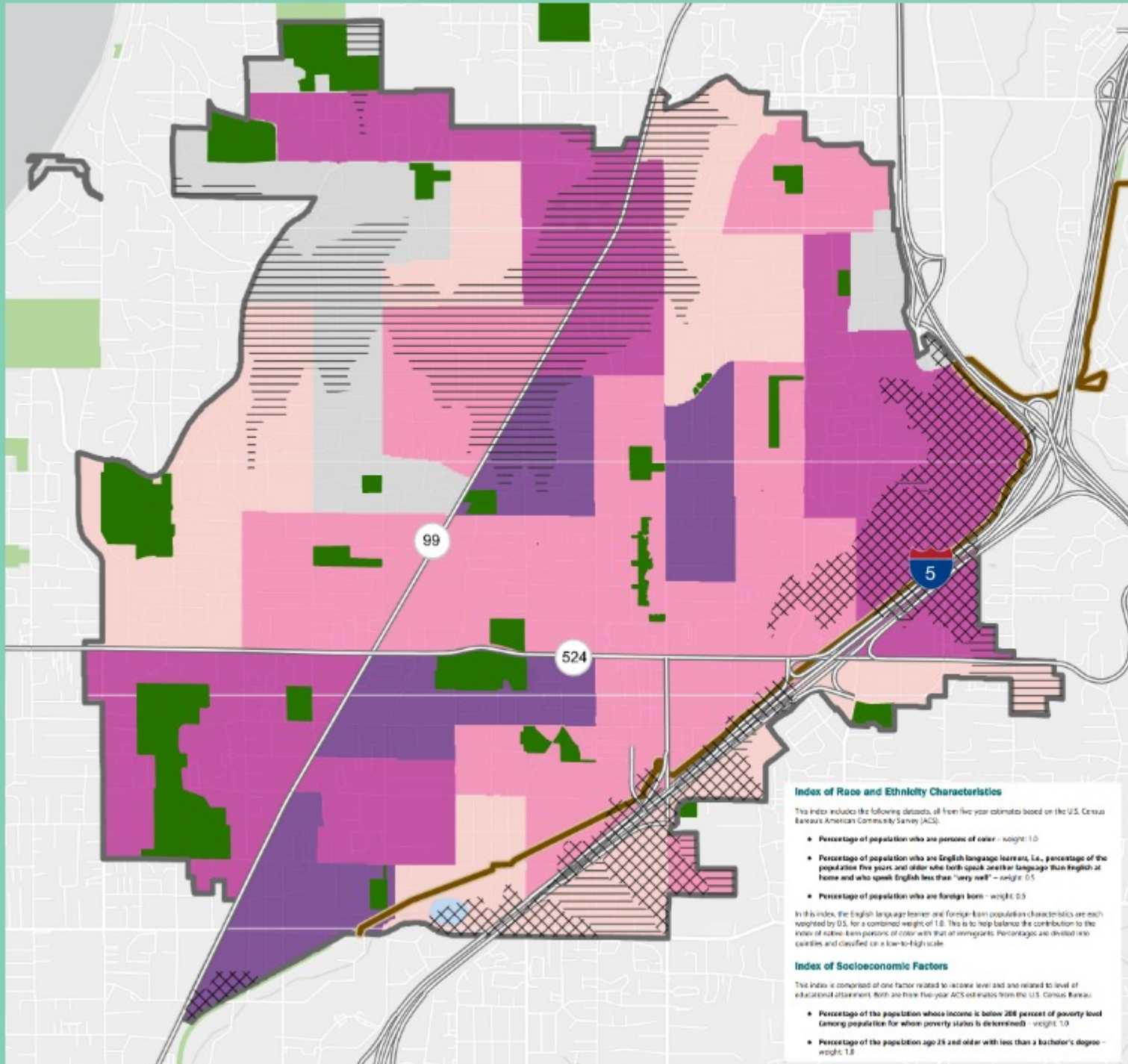
Parks Quiz!

PollEv.com/lynnmcbride763

Parks Quiz! Which two regions of Lynnwood score highest for social vulnerability?










Demographic Index



Percentage of population who are persons of color: weight 1.0

Percentage of population who are English language learners: weight 0.5

Percent of the population who are foreign born: weight 0.5

-  Areas with Access to Interurban Trail Only
-  Park Access Gap
-  Lynnwood Parks
-  Other Parks
-  City Limits
-  Interurban Trail
-  Highway

Index of Race and Ethnicity Characteristics

This index includes the following datasets, all from five-year estimates based on the U.S. Census Bureau's American Community Survey (ACS).

- Percentage of population who are persons of color - weight: 1.0
- Percentage of population who are English language learners, i.e., percentage of the population five years and older who both speak another language than English at home and who speak English less than "very well" - weight: 0.5
- Percentage of population who are foreign born - weight: 0.5

In this index, the English language learner and foreign-born population characteristics are each weighted by 0.5, for a combined weight of 1.0. This is to help balance the contribution to the index of native-born persons of color with that of immigrants. Percentages are divided into quintiles and classified on a low-to-high scale.

Index of Socioeconomic Factors

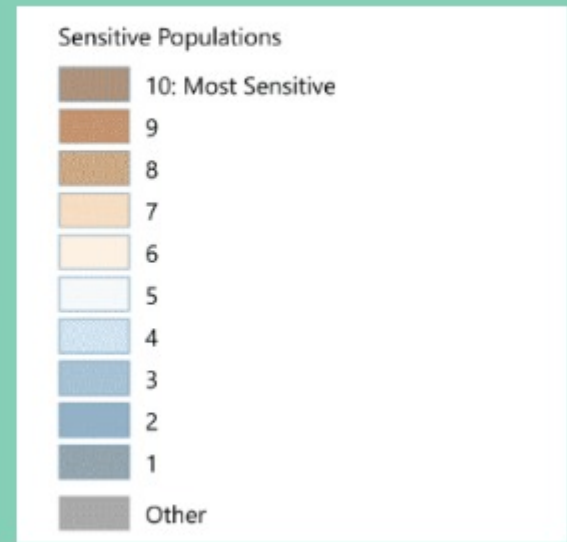
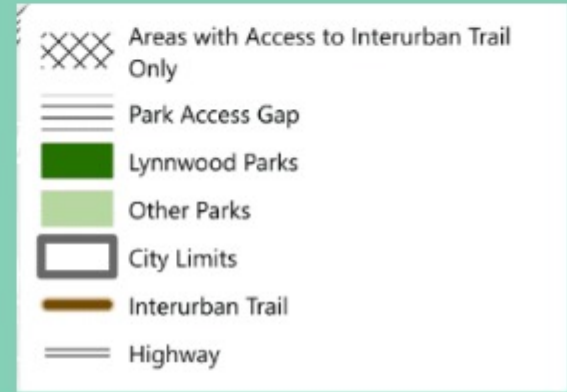
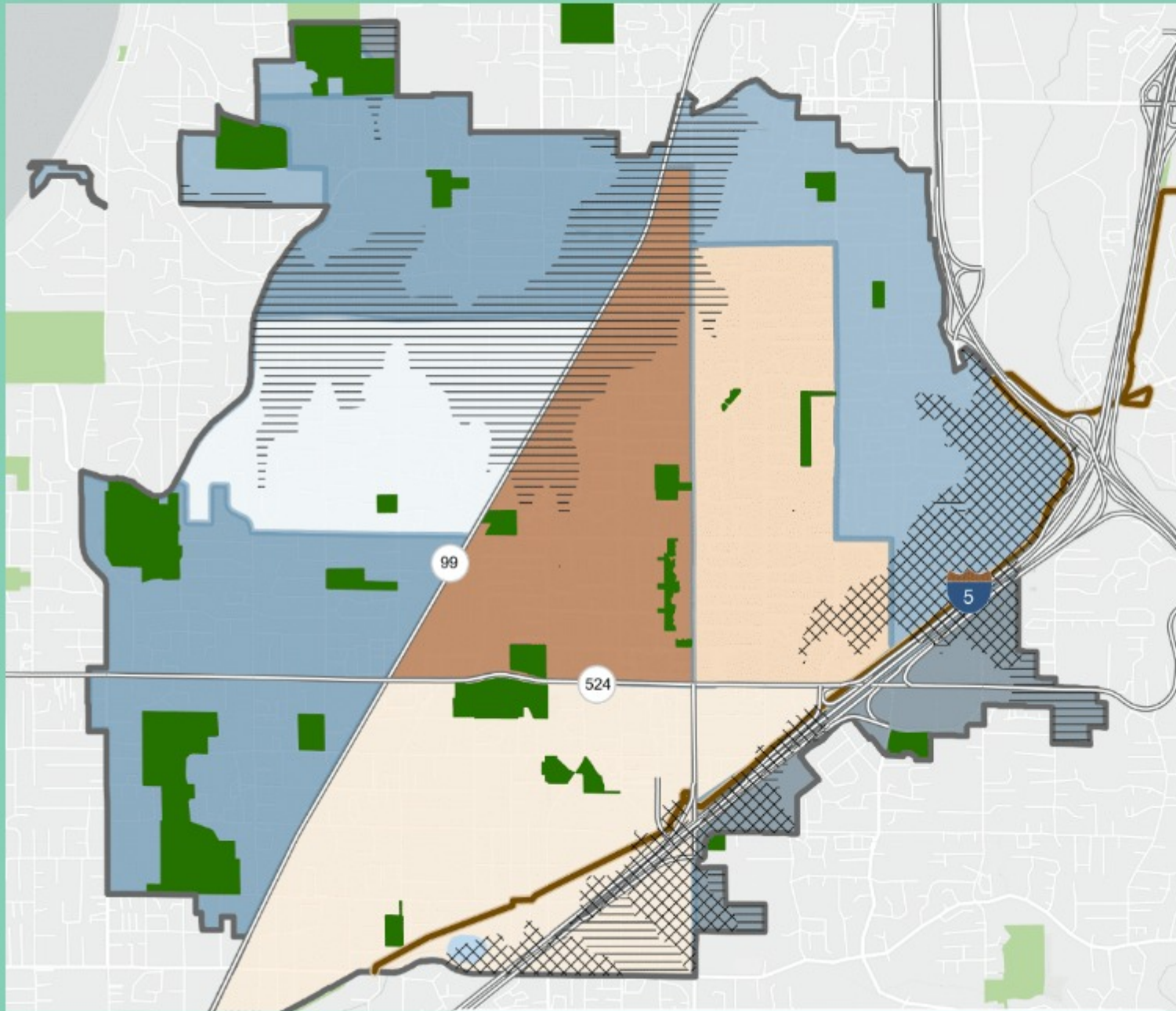
This index is comprised of one factor related to income level and one related to level of educational attainment. Both are from five-year ACS estimates from the U.S. Census Bureau.

- Percentage of the population whose income is below 200 percent of poverty level (among population for whom poverty status is determined) - weight: 1.0
- Percentage of the population age 25 and older with less than a bachelor's degree - weight: 1.0

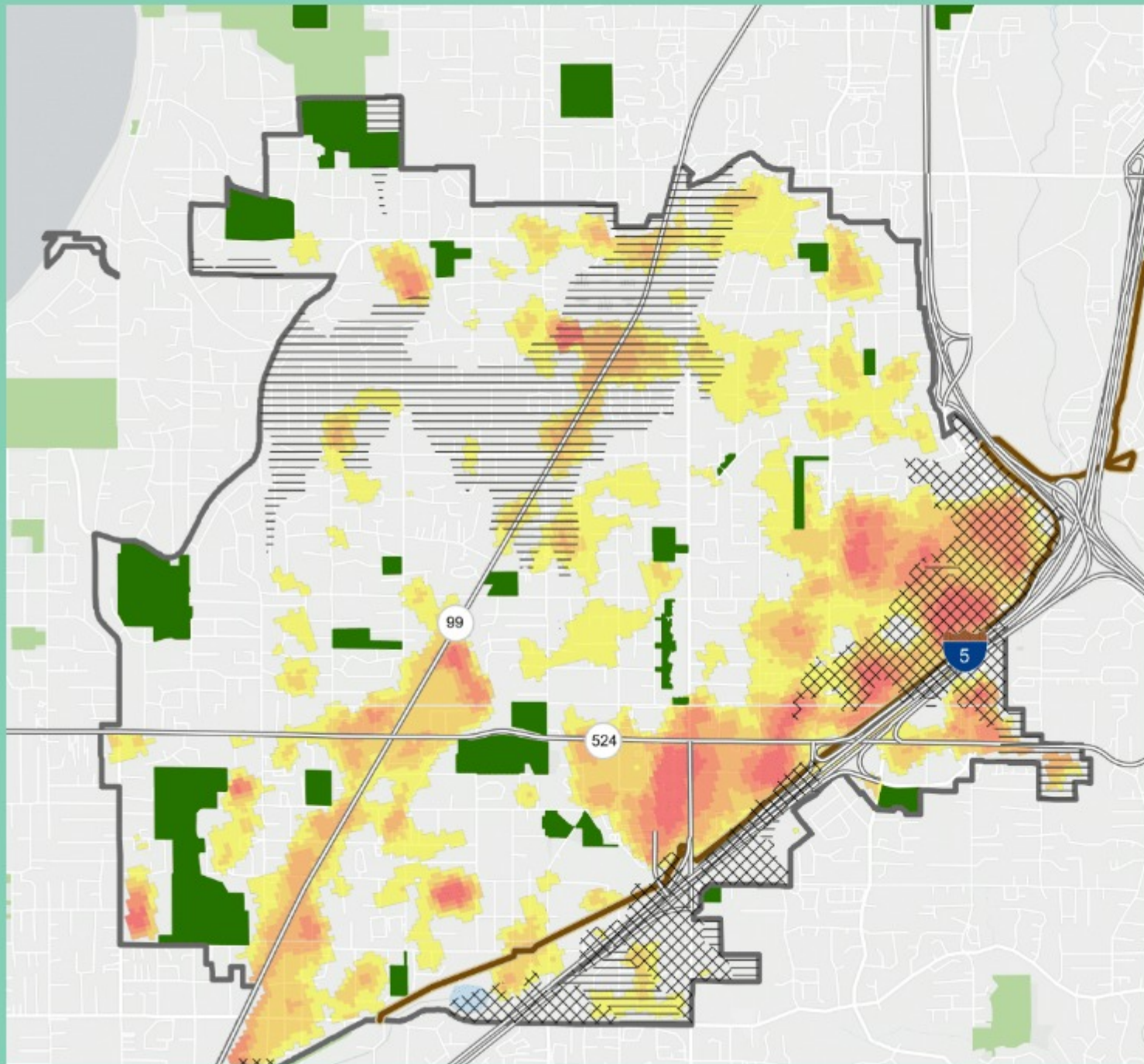
Racial and Social Equity Index*

-  Low Vulnerability
-  Low-Moderate Vulnerability
-  Moderate Vulnerability
-  Moderate-High Vulnerability
-  High Vulnerability

Sensitive Populations



Heat Island Severity



- Areas with Access to Interurban Trail Only
- Park Access Gap
- Lynnwood Parks
- Other Parks
- City Limits
- Interurban Trail
- Highway

Heat Island Severity (2021)

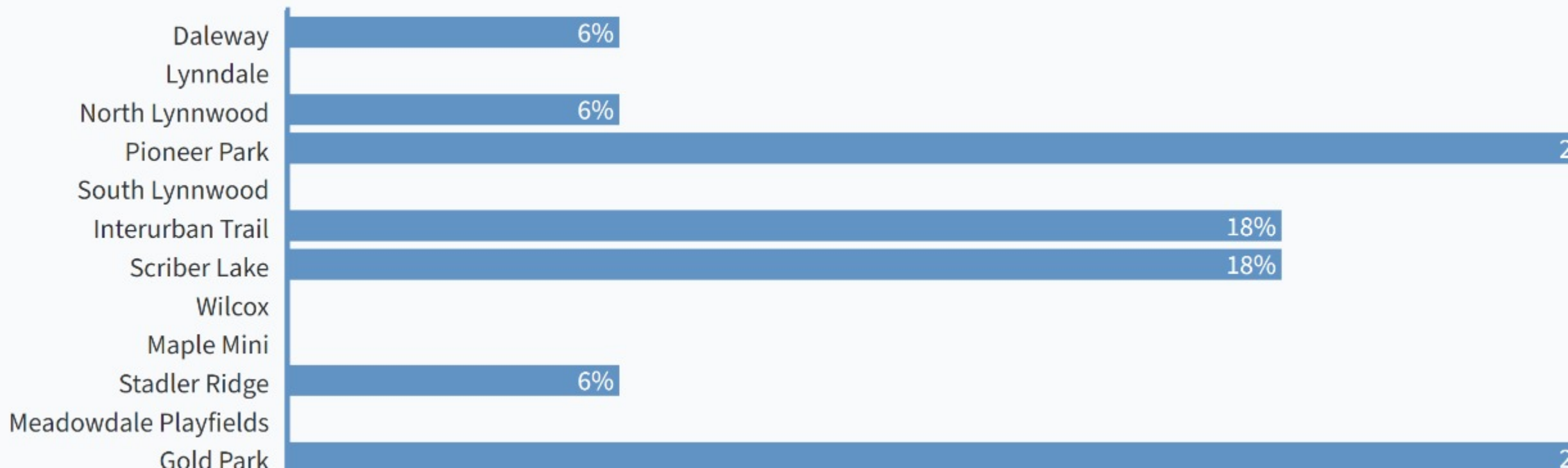
- Low
- Low-Medium
- Medium
- High
- Very High

Note: Heat island severity show where areas of Lynnwood are hotter than the average temperature for the city overall on the same day. Areas not shaded are at or below the average temperature and are not considered heat islands.

Parks Quiz!

PollEv.com/lynnmcbride763

Parks Quiz! Choose three parks with the highest overall opportunity score.



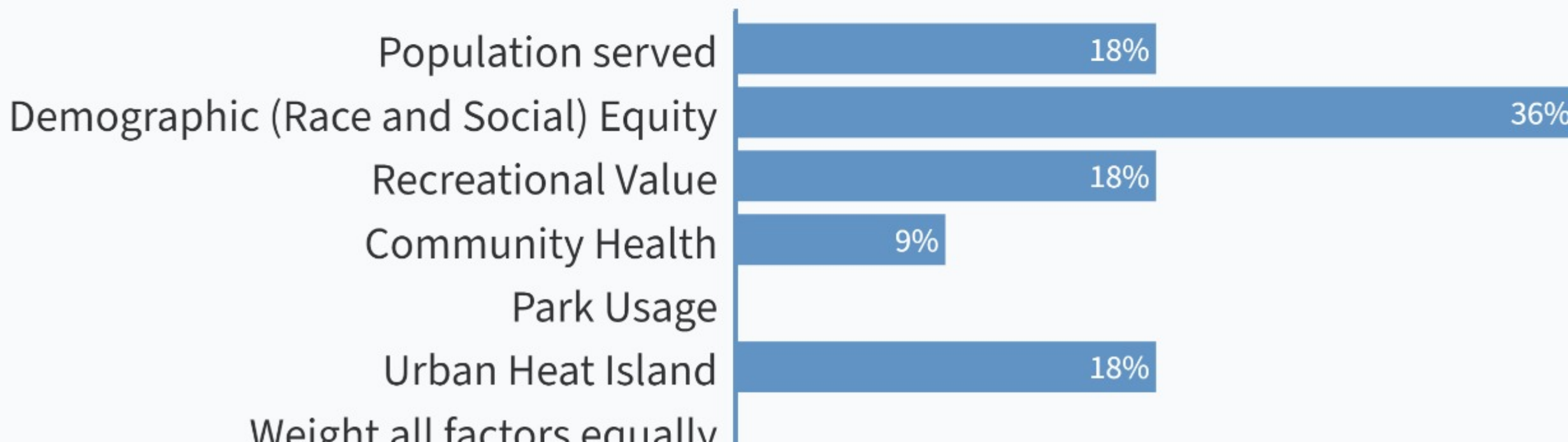
Index Map Results

Park Name	INCLUSION	EQUITABLE ACCESS		HEALTH		ENVIRONMENTAL RESILIENCE	
WEIGHTING	1	1	1	1	1	1	
	Population	Demographic Equity	Recreational Value	Community Health	Park Usage	Urban Heat Islands	Normalized Score
Interurban Trail	5	5.0	5	3	5	5	2.00
Lynnwood Golf Course Trail	5	5.0	5	1	5	5	1.86
North Lynnwood Park	3	5.0	3	5	5	5	1.86
Scriber Lake Park	5	4.0	4	3	4	4	1.71
Mesika Trail	5	4.0	5	4	3	3	1.71
Pioneer Park	4	5.0	3	4	3	3	1.57
Wilcox Park	4	3.0	2	5	4	4	1.57
Gold Park	5	5.0	5	1	2	2	1.43
Sprague's Pond Park	4	4.0	4	3	2	2	1.36
Veterans Park	4	4.0	5	4	1	1	1.36
Scriber Creek Park	2	4.0	5	3	2	2	1.29
Daleway Park	3	4.0	3	1	3	3	1.21
Spruce Park	2	2.0	3	2	4	4	1.21
South Lynnwood Park	3	5.0	1	3	2	2	1.14
Heritage Park	1	4.0	4	1	3	3	1.14
Maple Mini Park	3	2.0	5	4	1	1	1.14
Rowe Park	2	3.0	5	3	1	1	1.07
Meadowdale Playfields	1	1.0	2	1	5	5	1.07
Lynndale Park	1	1.0	1	1	5	5	1.00
Meadowdale Neighborhood Park	2	1.0	2	1	4	4	1.00
Stadler Ridge Park	1	2.0	4	2	1	1	0.79
Lynn's Gulch Open Space	1	1.0	5	1	1	1	0.71

Poll Question

PollEv.com/lynnmcbride763

What equity and resilience factors, if any, should be weighted? (select up to 3)



Questions/Comments

These are the areas that feel like community stimulants to me, because these are ways that give back to the most underserved areas and will do the most good for all for all of Lynnwood, because you're not focusing on as much on the areas of that are already decently served

"I would say for the demographics, these are the voices that are the least heard. Therefore, they need to be weighted higher. Making sure the few voices that you have of that are important."

I was weighting anything that has to do with urban heat or climate change.

I put population served because there are a lot of dense areas of the city, especially along highway 99 and the future city-center that don't have great access to parks. I think population has to factor fairly high.

The logo for 'PARKS LOVE' is displayed in a teal color. The word 'PARKS' is in a bold, sans-serif font. The letter 'A' is replaced by a stylized evergreen tree icon. The word 'LOVE' is in a similar font, with the letter 'O' replaced by a heart icon. A thin teal horizontal line is positioned below the text.

PARKS LOVE

Project Screening

PARKS LOVE

Screening Questions

	Focus Area	Scoring
Does the project support pedestrian connectivity?	Equitable Park Access	0/1
Is the project operationally critical for the continued function of high-use park amenities?	Financial, O+M	0-2
Does the project align with a minimum of one Community Outreach Priority area?	Community	0-2
Does the project address perception of safety concerns?	Inclusion	0/1
Does the project add an amenity in a known relevant amenity gap area?	Equitable Park Access	0/1
Does the project support Parkslove goals of addressing Mental and Social Health?	Health	0-2
Does the project remove ADA barriers?	Inclusion	0-2

Question 1

Does the project support pedestrian connectivity?

Trail projects, walking infrastructure, and loops would receive a score 1.

Question 2

Is the project operationally critical for the continued function of high-use park amenities?

This score (0-2) would allow us to prioritize critical projects that may not meet other goals around equity and resilience, but are located in parks that are broadly used by many community members in Lynnwood.

Question 3

Does the project align with a minimum of one Community Outreach Priority area?

This score (0-2) would allow us to prioritize projects that are desired by the community as determined by our 2023 outreach.

Question 4

Does the project address perception of safety concerns?

Projects that include lighting, vegetation/site line enhancement and increase active use of space would be prioritized and receive a score of 1.

Question 5

Does the project add an amenity in a known relevant amenity gap area?

This score would allow us to prioritize projects that provide new amenities or significantly expanded amenities in related amenity gap areas. (0/1)

Question 6

Does the project support Parkslove goals of addressing Mental and Social Health?

Projects that strongly promote both mental and social health would receive 2 points.

The logo for Parkslove features the word "PARKS" in a teal, sans-serif font, followed by "LOVE" in a pink, sans-serif font. The letter "A" in "PARKS" is replaced by a stylized tree icon. A thin teal horizontal line is positioned below the text.

PARKS LOVE

Question 7

Does the project remove ADA barriers?

This score (0-2) could allow us to prioritize projects that remove high priority/significant ADA accessibility barriers.

Poll Question

PollEv.com/lynnmcbride763

How is operationally critical a priority question? If the park can't be open, why does any of this matter? It feels like a trick question.

This question is really difficult to answer because by doing one you are addressing another. Not sure if you're getting the best data out of this question.

I'm surprised at how low pedestrian connectivity is scoring.

When I first joined the CD group, I was very concerned with my perception of safety at Scriber lake park. As I've spent more time there, the concern has fallen away. I've started to equate safety concerns with site line concerns. Which for me means more straight trails, which is less interesting to me, but I understand they have ADA values. I'm conflicted about those two needs (mine or an ADA person's) It's interesting that my thoughts have changed over time about safety, even though safety issues have started to climb in Lynnwood.

Rank the project screening questions in order of priority.



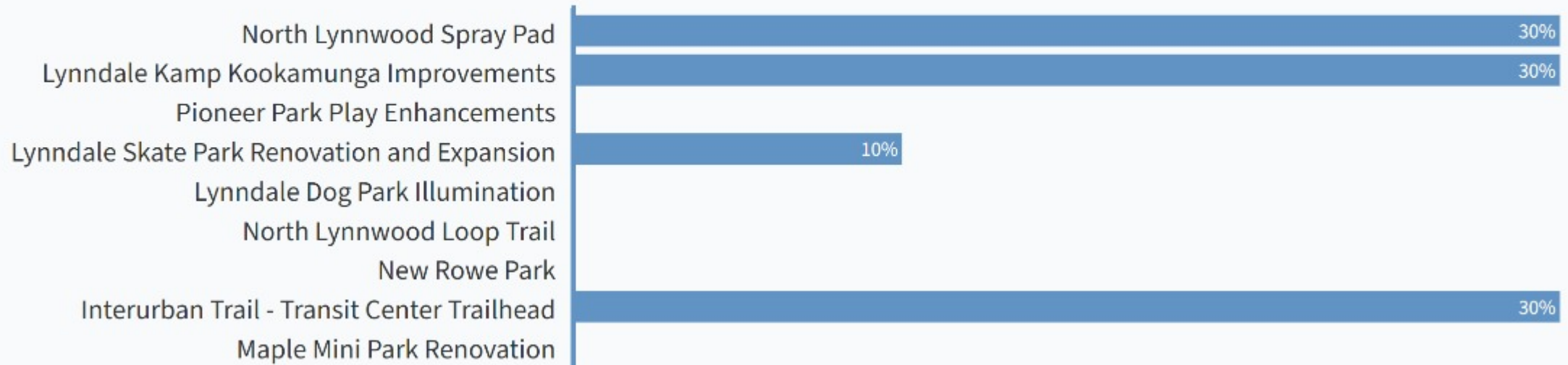
Test Projects

Park	Proposed Projects
	<div style="display: flex; justify-content: space-between;"> ↓↑ <i>Example Scoring System</i> ▼ </div>
Interurban Trail	Transit Center Trailhead
Lynndale	Kamp Kookamunga Improvements
Lynndale	NW/SW Parking and Access Improvements
Lynndale	Dog Park Illumination
Lynndale	Tennis Court Renovation
Lynndale	Skate Park Renovation and Expansion
Maple Mini	Full Park Renovation
North Lynnwood Park	Loop Trail
North Lynnwood Park	Spray Pad
North Lynnwood Park	Play/Place Project
North Lynnwood Park	North & South Neighborhood Connections
North Lynnwood Park	Lawn Renovation
Pioneer Park	Play Enhancements
Pioneer Park	Opportunity/Place Project
Rowe Park	New Park Project

Parks Quiz!

PollEv.com/lynnmcbride763

Parks Quiz! Which projects are operationally critical for the continued function of high use park amenities? (select up to 2)



Weighting Scenario 1 - ADA Barrier Removal

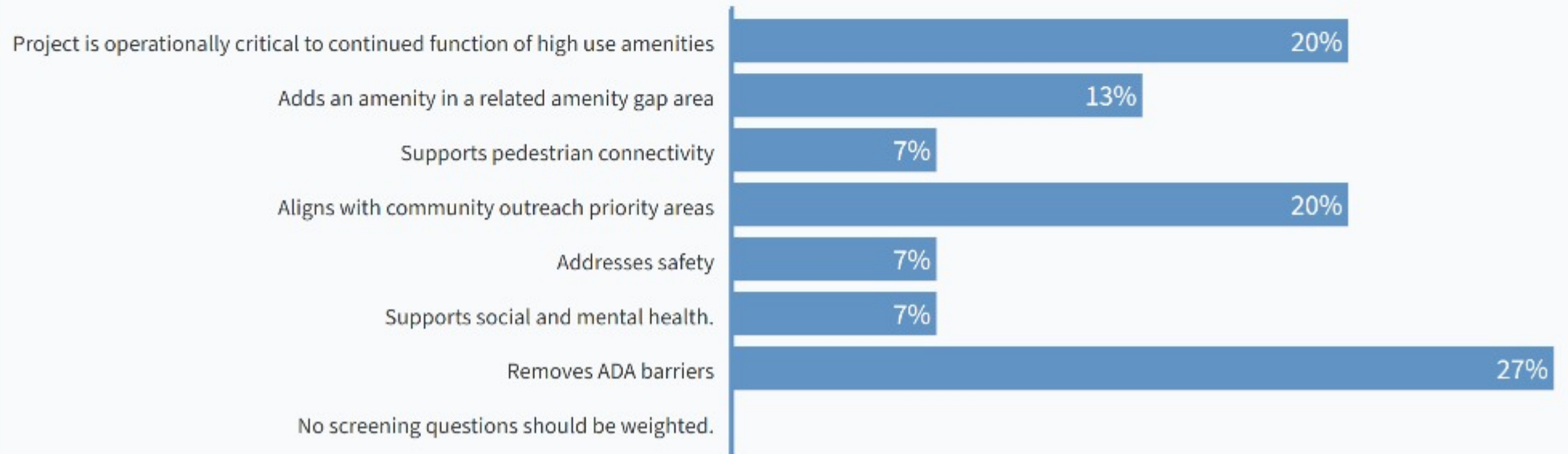
Weighting Scenario 2 - Operationally Critical Projects

Weighting Scenario 3 - Community Priority

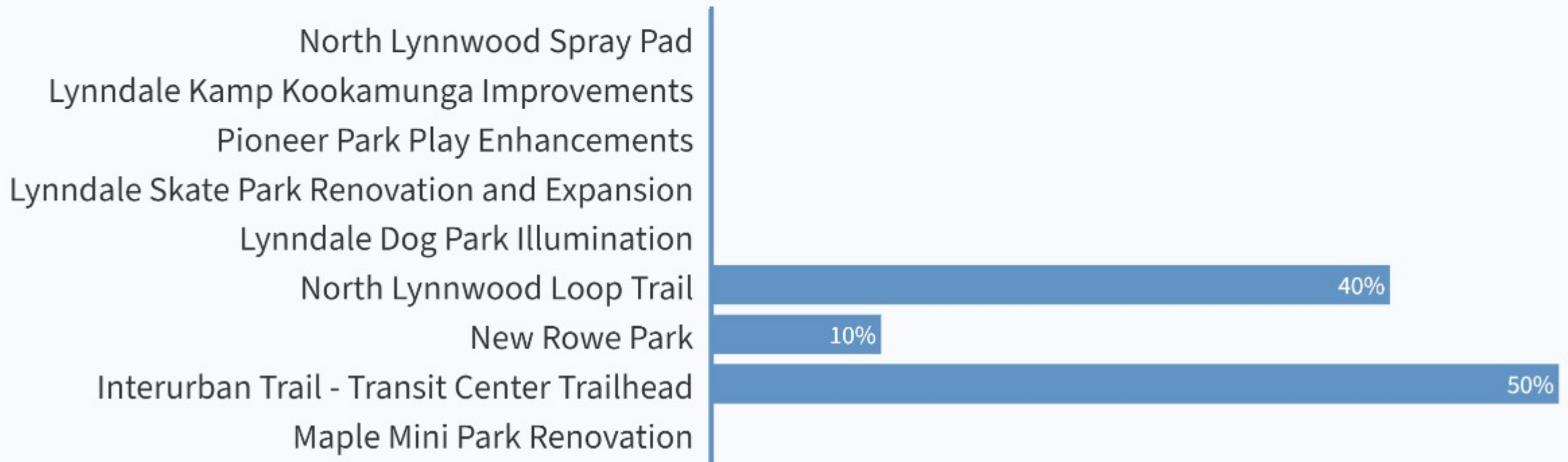
Poll Question

PollEv.com/lynnmcbride763

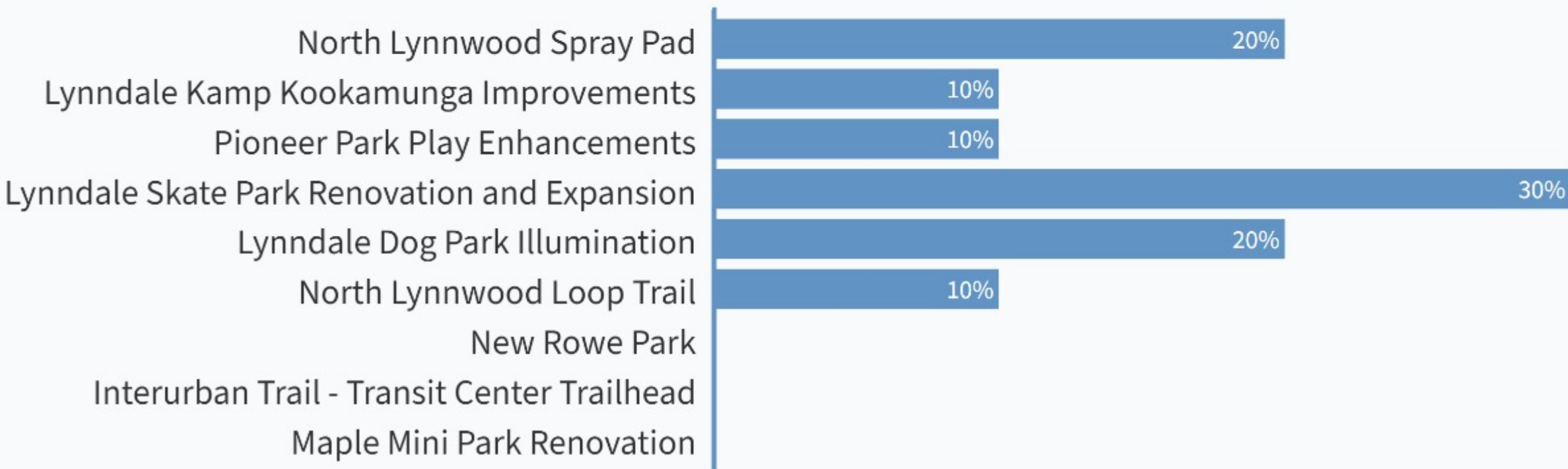
Which project screening questions, if any, should be weighted? (select up to 3)



Parks Quiz! Which projects best support pedestrian connectivity? (select up to 2)



Parks Quiz! Which projects best support social and mental health? (select up to 2)



Questions/Comments

Didn't choose safety because addressing other categories also improves safety.

getting more trail project approved

lighting and covered areas feed into the other categories like mental health and park use

being more clear on what the word safety means

programs and partnerships can address safety

The logo for 'PARKS LOVE' is displayed on a teal background. The word 'PARKS' is in a teal, sans-serif font, with a stylized tree icon replacing the letter 'A'. The word 'LOVE' is in a pink, sans-serif font, with a heart icon replacing the letter 'O'. A thin teal horizontal line is positioned below the text.

PARKS LOVE

Next Steps

Meeting #7 - TBD

- Review indexed draft project list
- Discuss project prioritization

July & August

- Review draft report content
- Public Open House comments
- Outreach Events
- CoDesign Feedback Session July 17th
- Celebration Event?

Fall

- Final Plan Adoption
- Implementation Planning