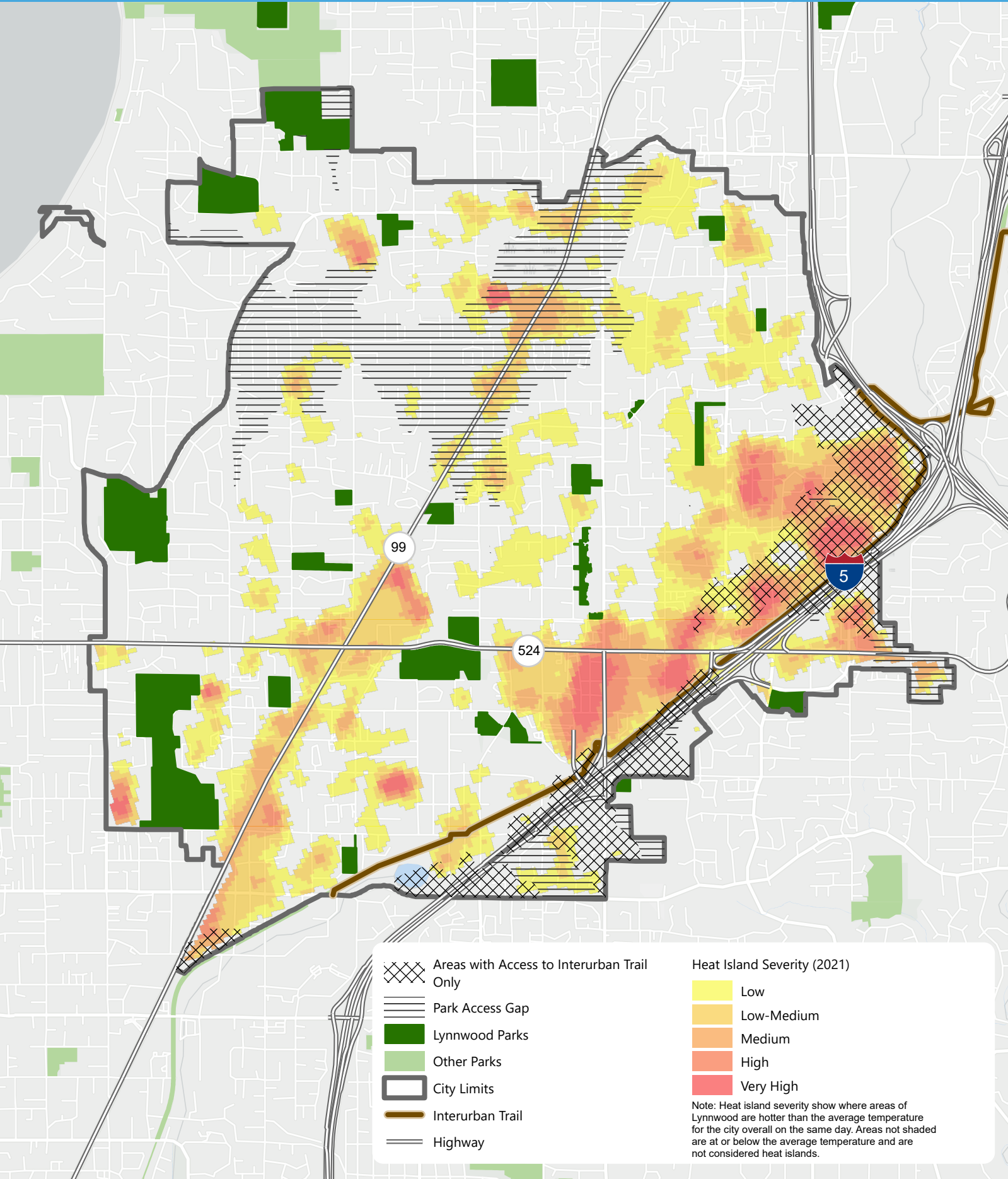

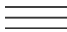












- Areas with Access to Interurban Trail Only
- Park Access Gap
- Park Walkshed (10-minutes)
- Interurban Trail Walkshed
- Lynnwood Parks
- Other Parks
- City Limits
- Interurban Trail
- Highway

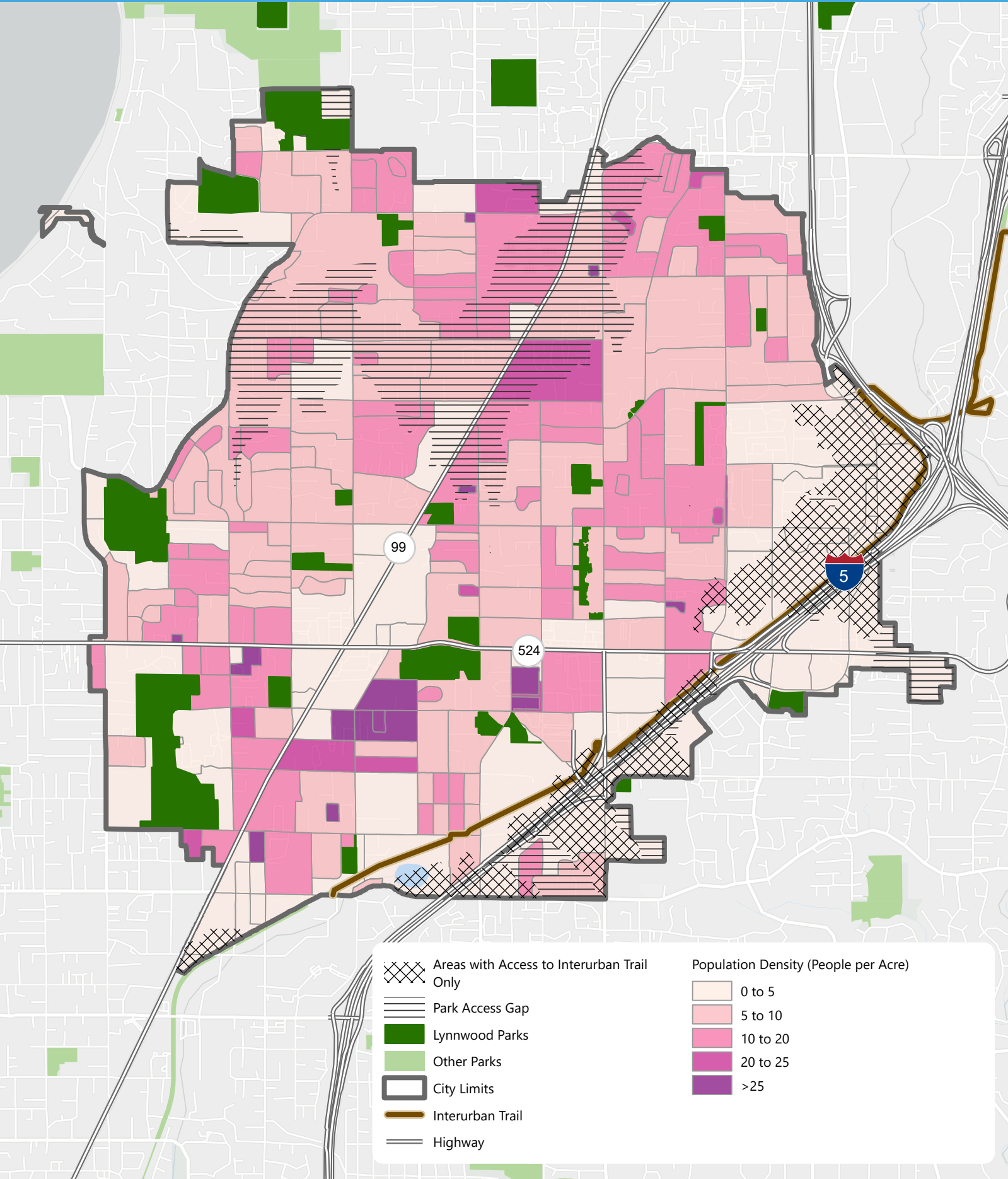



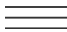










-  Areas with Access to Interurban Trail Only
-  Park Access Gap
-  Lynnwood Parks
-  Other Parks
-  City Limits
-  Interurban Trail
-  Highway

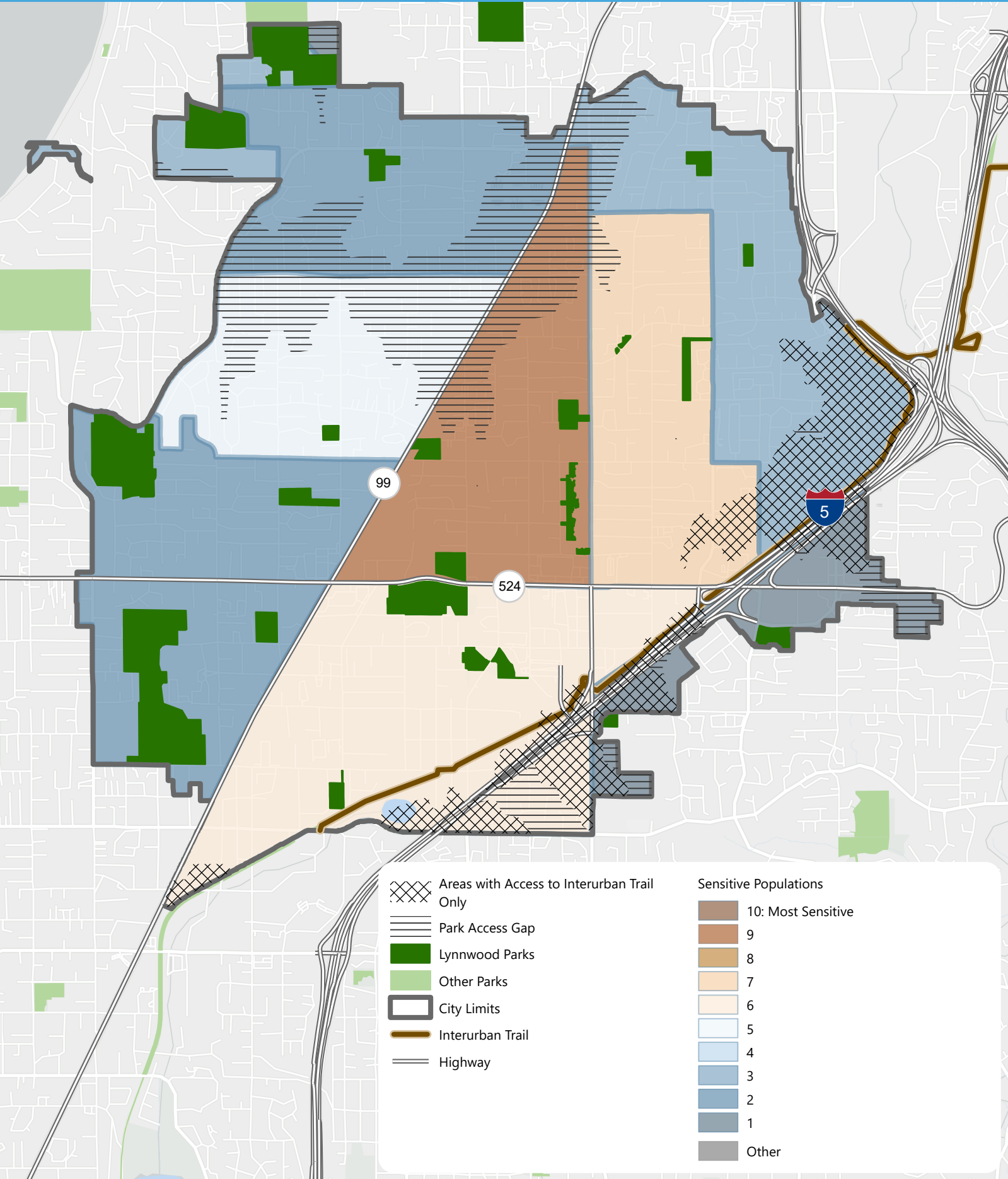
Heat Island Severity (2021)

-  Low
-  Low-Medium
-  Medium
-  High
-  Very High

Note: Heat island severity show where areas of Lynnwood are hotter than the average temperature for the city overall on the same day. Areas not shaded are at or below the average temperature and are not considered heat islands.

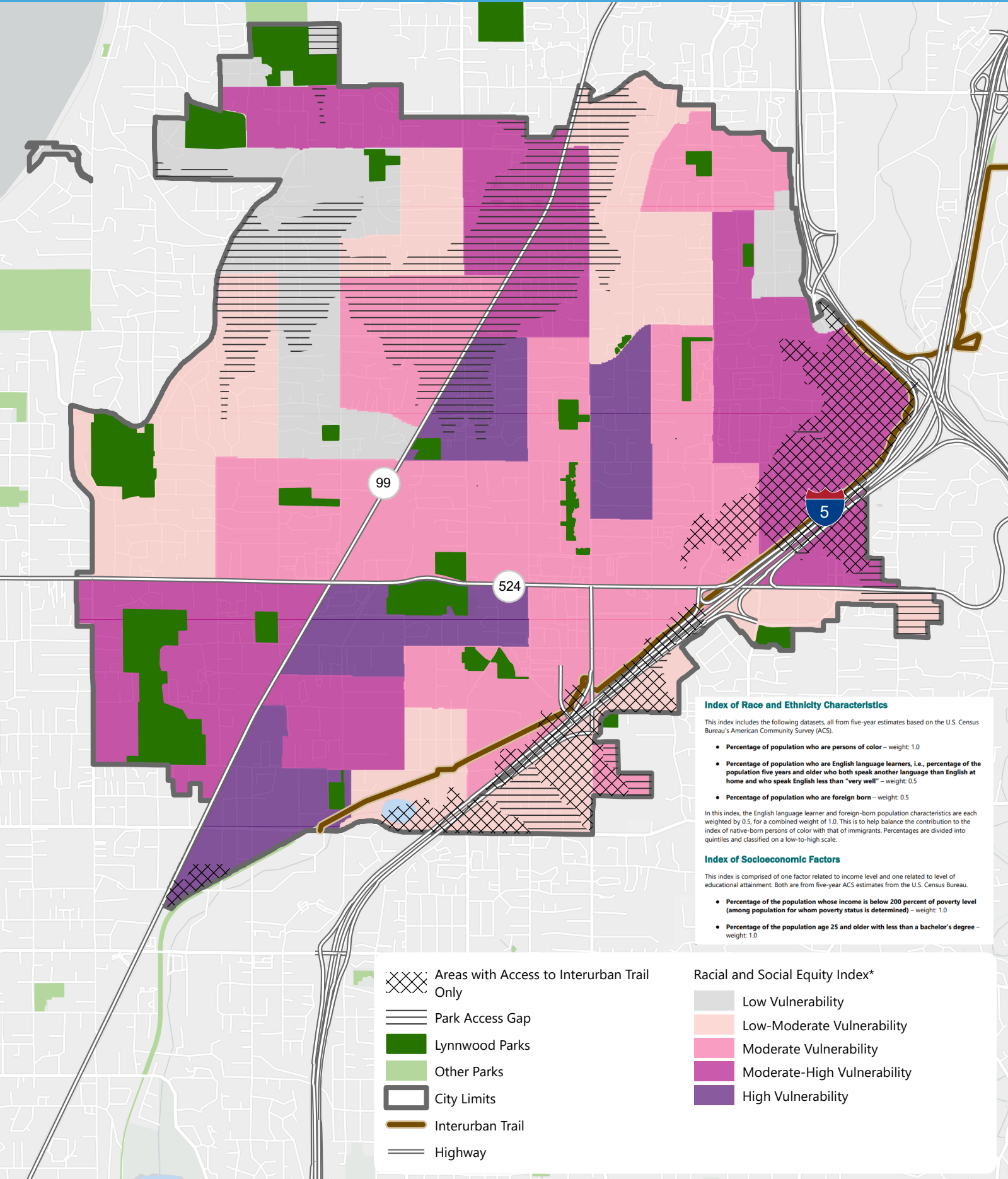


	Areas with Access to Interurban Trail Only	Population Density (People per Acre)
	Park Access Gap	 0 to 5
	Lynnwood Parks	 5 to 10
	Other Parks	 10 to 20
	City Limits	 20 to 25
	Interurban Trail	 >25
	Highway	



- Areas with Access to Interurban Trail Only
- Park Access Gap
- Lynnwood Parks
- Other Parks
- City Limits
- Interurban Trail
- Highway

- Sensitive Populations**
- 10: Most Sensitive
 - 9
 - 8
 - 7
 - 6
 - 5
 - 4
 - 3
 - 2
 - 1
 - Other



Index of Race and Ethnicity Characteristics

This index includes the following datasets, all from five-year estimates based on the U.S. Census Bureau's American Community Survey (ACS).


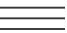





- Percentage of population who are persons of color – weight: 1.0
- Percentage of population who are English language learners, i.e., percentage of the population five years and older who both speak another language than English at home and who speak English less than "very well" – weight: 0.5
- Percentage of population who are foreign born – weight: 0.5

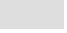




In this index, the English language learner and foreign-born population characteristics are each weighted by 0.5, for a combined weight of 1.0. This is to help balance the contribution to the index of native-born persons of color with that of immigrants. Percentages are divided into quintiles and classified on a low-to-high scale.

Index of Socioeconomic Factors

This index is comprised of one factor related to income level and one related to level of educational attainment. Both are from five-year ACS estimates from the U.S. Census Bureau.

- Percentage of the population whose income is below 200 percent of poverty level (among population for whom poverty status is determined) – weight: 1.0
- Percentage of the population age 25 and older with less than a bachelor's degree – weight: 1.0

-  Areas with Access to Interurban Trail Only
-  Park Access Gap
-  Lynnwood Parks
-  Other Parks
-  City Limits
-  Interurban Trail
-  Highway

- Racial and Social Equity Index***
-  Low Vulnerability
 -  Low-Moderate Vulnerability
 -  Moderate Vulnerability
 -  Moderate-High Vulnerability
 -  High Vulnerability