

P:\MapInfo\Map2 - Generate d\lynnwood\11-10227-01002\maps\fig 1-1 Location Map 8.5x11.mxd 8/14/2012 cdobleno

This map is a geographic representation based on information available. No warranty is made concerning the accuracy, currency, or completeness of data depicted on this map.

**BHC** CONSULTANTS  
**BHC Consultants, LLC**  
 1601 Fifth Avenue, Suite 500  
 Seattle, Washington 98101  
 206.505.3400  
 206.505.3406 (fax)  
 www.bhcconsultants.com

**LYNNWOOD**  
 WASHINGTON

**LOCATION MAP**

City of Lynnwood  
 2012 Water Comprehensive  
 Plan Update  
 August 2012

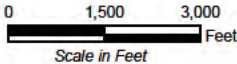
Figure

**1-1**



P:\Mapping\Maps Generated\Lynnwood\11-10227\_01\0202\map\Fig\_1\_2 Topography 2.5x11.mxd 8/13/2012 coblenino

Contours: City of Lynnwood 2006  
 This map is a geographic representation based on information available. No warranty is made concerning the accuracy, currency, or completeness of data depicted on this map.

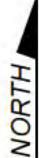


# TOPOGRAPHIC MAP

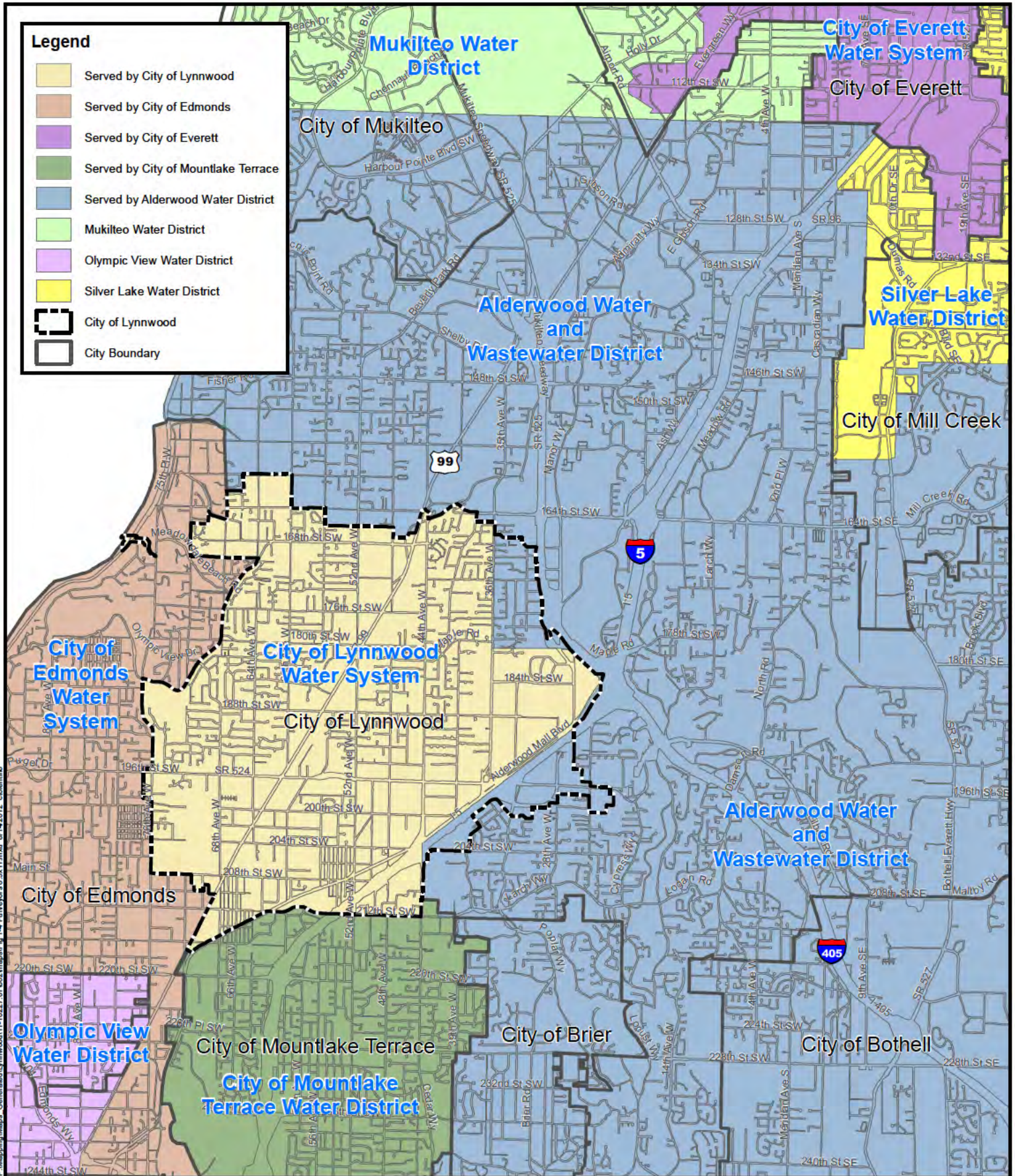
City of Lynnwood  
 2012 Water Comprehensive  
 Plan Update  
 August 2012

Figure  
**1-2**

**BHC CONSULTANTS**  
**BHC Consultants, LLC**  
 1601 Fifth Avenue, Suite 500  
 Seattle, Washington 98101  
 206.505.3400  
 206.505.3406 (fax)  
 www.bhcconsultants.com



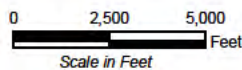




**Legend**

- Served by City of Lynnwood
- Served by City of Edmonds
- Served by City of Everett
- Served by City of Mountlake Terrace
- Served by Alderwood Water District
- Mukilteo Water District
- Olympic View Water District
- Silver Lake Water District
- City of Lynnwood
- City Boundary

This map is a geographic representation based on information available. No warranty is made concerning the accuracy, currency, or completeness of data depicted on this map.



**ADJACENT WATER PURVEYORS**

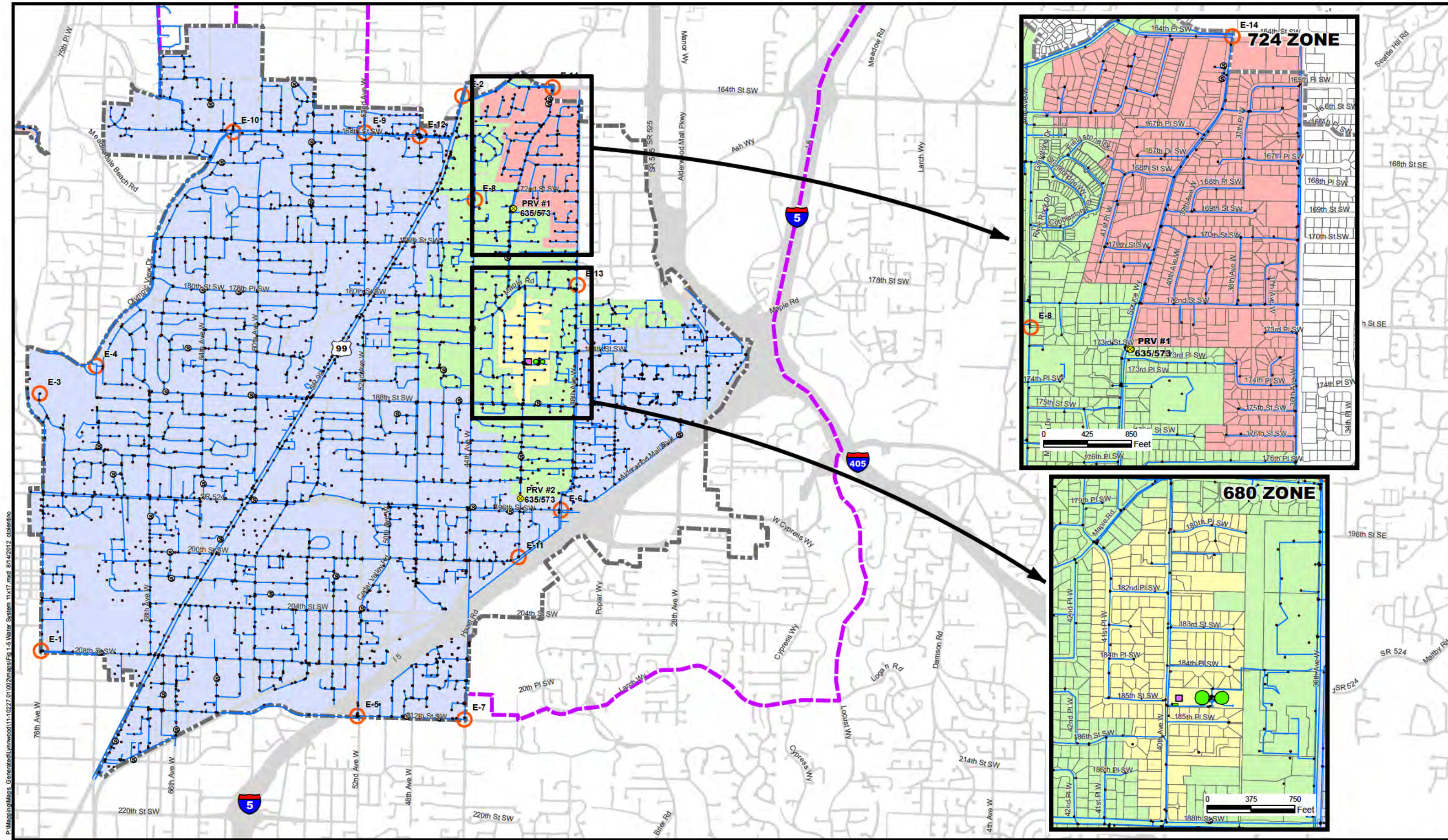
City of Lynnwood  
2012 Water Comprehensive  
Plan Update  
August 2012

Figure

**1-4**

**BHC CONSULTANTS**  
**BHC Consultants, LLC**  
 1601 Fifth Avenue, Suite 500  
 Seattle, Washington 98101  
 206.505.3400  
 206.505.3406 (fax)  
 www.bhcconsultants.com





P:\Mapping\Maps\_Generated\Lynnwood\11-10227\_01002\map\Fig 1-5 Water System 11x17.mxd 8/14/2012 cdc@lyn

**BHC CONSULTANTS, LLC**  
 1601 Fifth Avenue, Suite 500  
 Seattle, Washington 98101  
 206.505.3400  
 206.505.3406 (fax)  
 www.bhcconsultants.com

**Water System: Lynnwood March 2011**  
 Intertie Locations: G&O Comp Plan November 2005  
 This map is a geographic representation based on information available. No warranty is made concerning the accuracy, currency, or completeness of data depicted on this map.

0 1,000 2,000  
 Feet  
 Scale in Feet

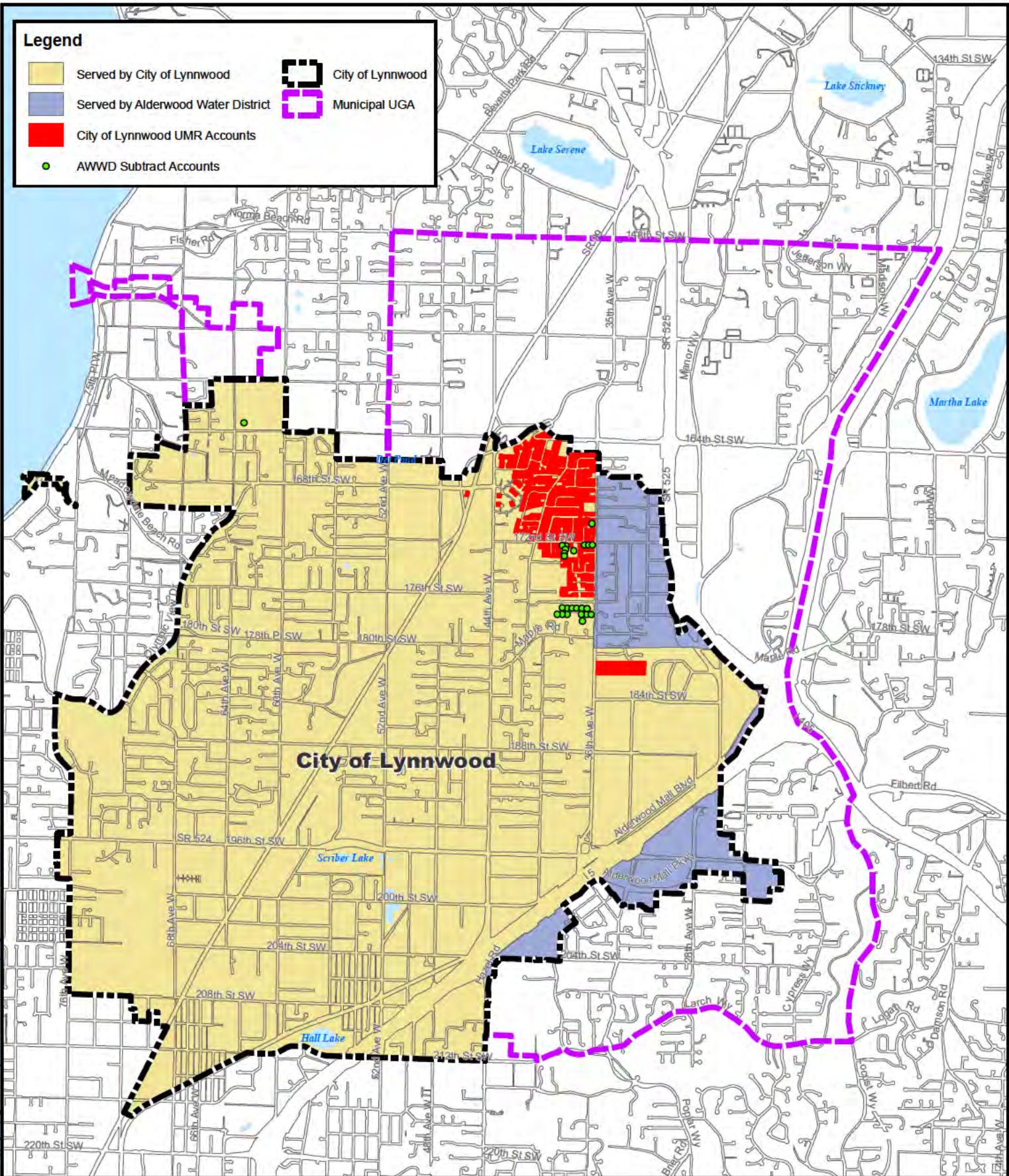
**NORTH**

COPYRIGHT © 2012 BHC CONSULTANTS LLC. ALL RIGHTS RESERVED

- |                 |                    |      |                  |
|-----------------|--------------------|------|------------------|
| Sample Stations | Pumps              | 573  | City of Lynnwood |
| PRV             | Reservoirs         | 635  | Municipal UGA    |
| Hydrants        | Water Lines        | 680  | City Boundary    |
| Valves          | Intertie Locations | 724  |                  |
|                 |                    | WWTP |                  |

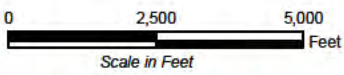


**WATER SYSTEM MAP**  
 City of Lynnwood  
 2012 Water Comprehensive  
 Plan Update  
 August 2012



F:\Mapping\Maps\_General\Lynnwood11-10227\_01\0202mgs\Fig\_1-6\_ServiceArea 8 8x11.mxd 8/14/2012 cid:efrino

This map is a geographic representation based on information available. No warranty is made concerning the accuracy, currency, or completeness of data depicted on this map.



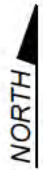
## SERVICE AREA MAP

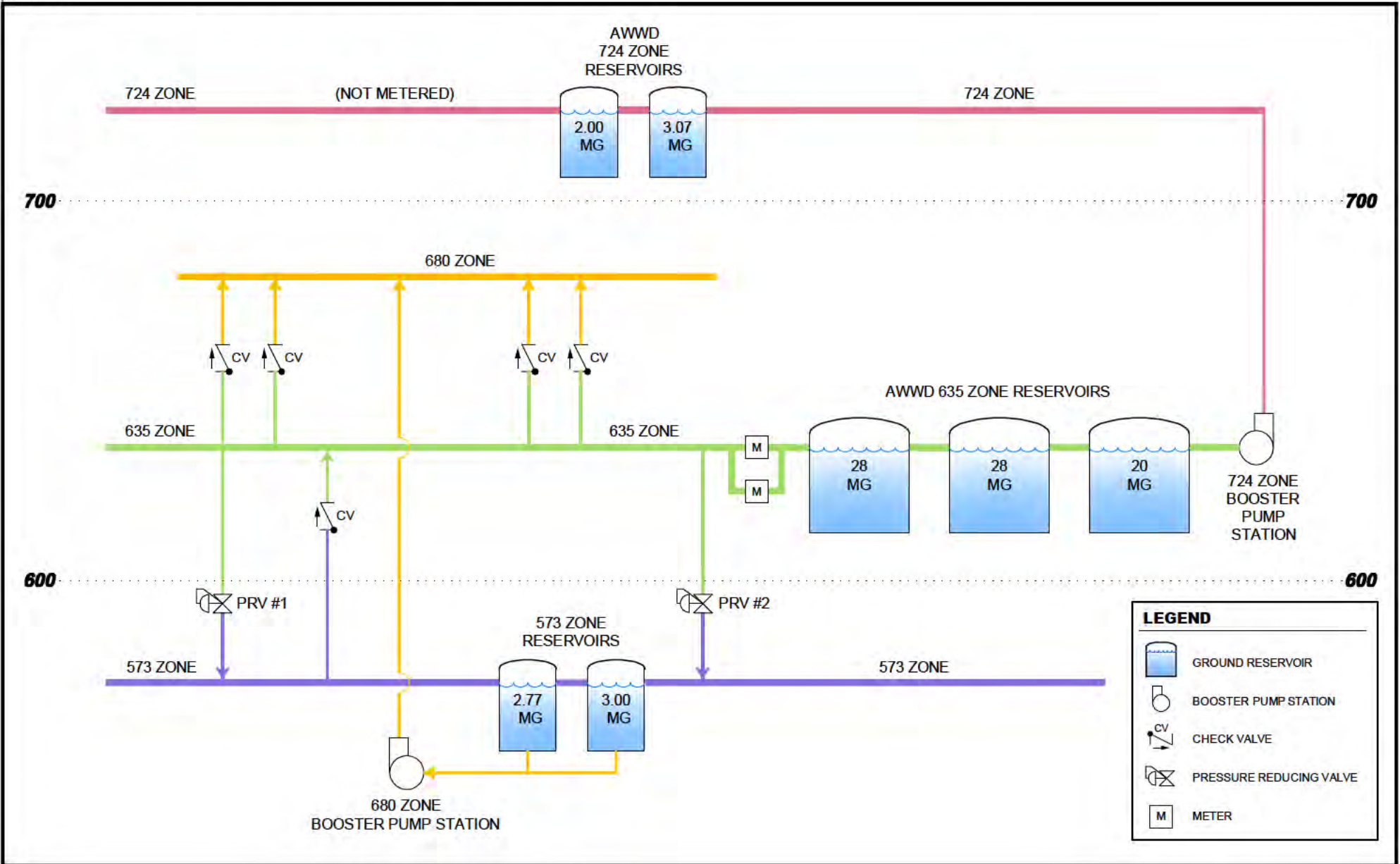
City of Lynnwood  
 2012 Water Comprehensive  
 Plan Update  
 August 2012

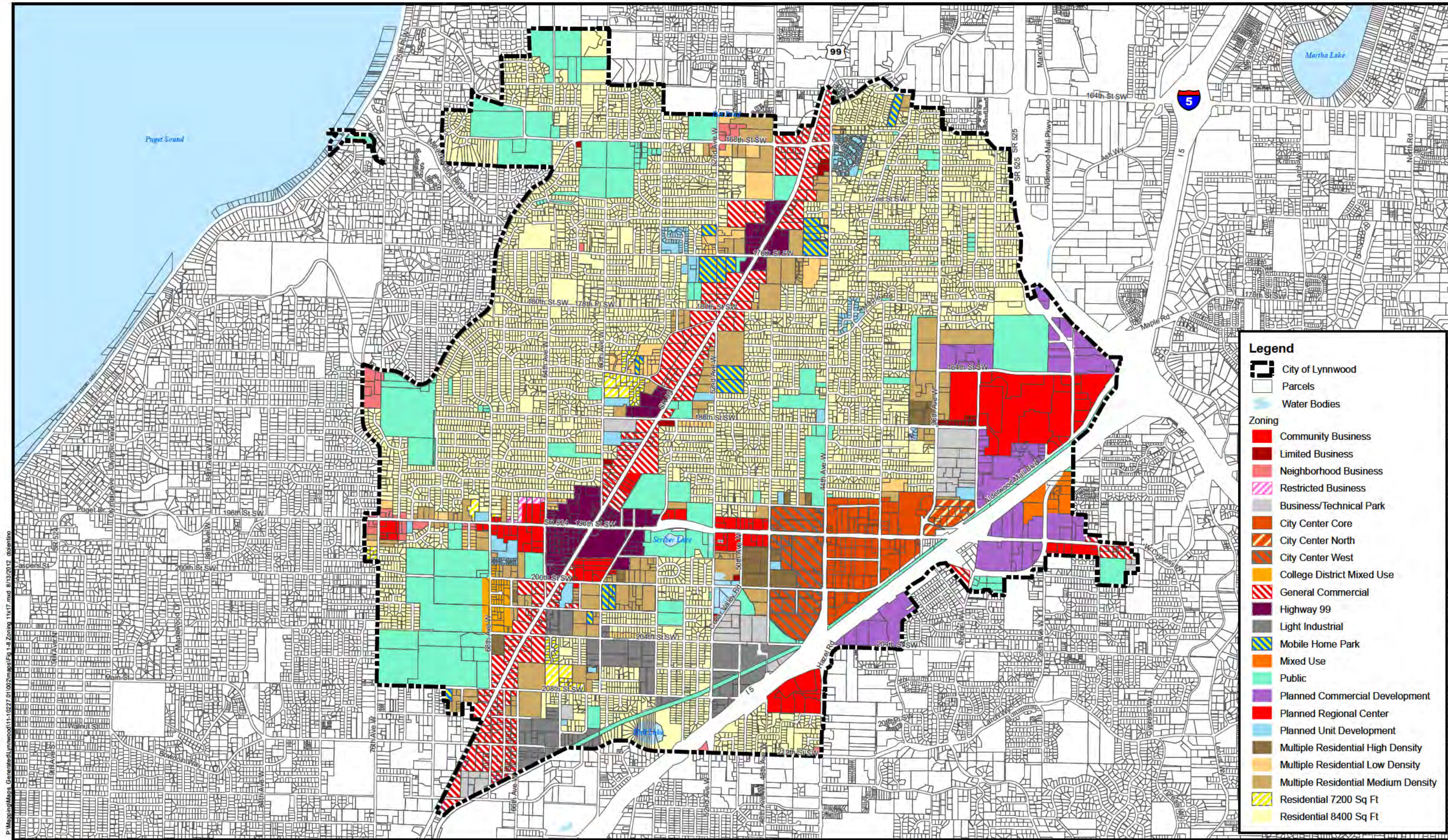
Figure

1-6

**BHC CONSULTANTS**  
**BHC Consultants, LLC**  
 1601 Fifth Avenue, Suite 500  
 Seattle, Washington 98101  
 206.505.3400  
 206.505.3406 (fax)  
 www.bhiconsultants.com







**Legend**

- City of Lynnwood
- Parcels
- Water Bodies

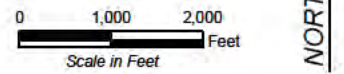
**Zoning**

- Community Business
- Limited Business
- Neighborhood Business
- Restricted Business
- Business/Technical Park
- City Center Core
- City Center North
- City Center West
- College District Mixed Use
- General Commercial
- Highway 99
- Light Industrial
- Mobile Home Park
- Mixed Use
- Public
- Planned Commercial Development
- Planned Regional Center
- Planned Unit Development
- Multiple Residential High Density
- Multiple Residential Low Density
- Multiple Residential Medium Density
- Residential 7200 Sq Ft
- Residential 8400 Sq Ft

P:\Map\MapData\Generated\lynnwood\11-10-2012\01-10-2012\Map\11-10-2012\_01-10-2012.dwg

**BHC CONSULTANTS, LLC**  
 1601 Fifth Avenue, Suite 500  
 Seattle, Washington 98101  
 206.505.3400  
 206.505.3406 (fax)  
 www.bhcconsultants.com

COPYRIGHT © 2012 BHC CONSULTANTS LLC. ALL RIGHTS RESERVED

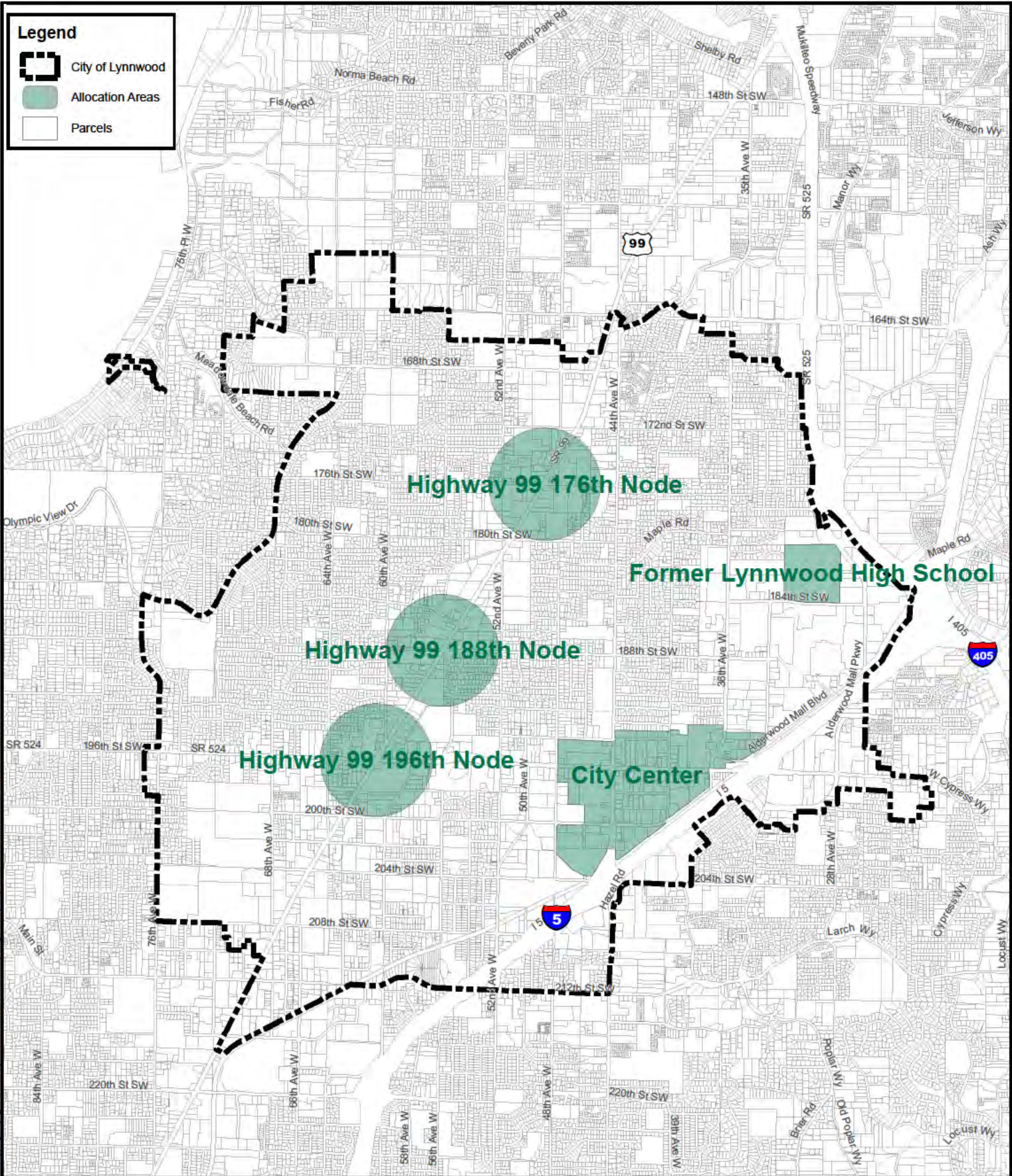


This map is a geographic representation based on information available. No warranty is made concerning the accuracy, currency, or completeness of data depicted on this map.



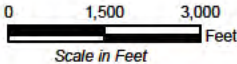
**ZONING MAP**  
 City of Lynnwood  
 2012 Water Comprehensive  
 Plan Update  
 August 2012





P:\Mapping\Maps Generated\Lynnwood11-10227\_01\02\mxd\fig-2-2 Pop Empl Allocation 8.5x11.mxd 8/14/2012 10:40:10

This map is a geographic representation based on information available. No warranty is made concerning the accuracy, currency, or completeness of data depicted on this map.

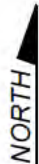


**POPULATION & EMPLOYMENT ALLOCATION AREAS**

City of Lynnwood  
 2012 Water Comprehensive Plan Update  
 August 2012

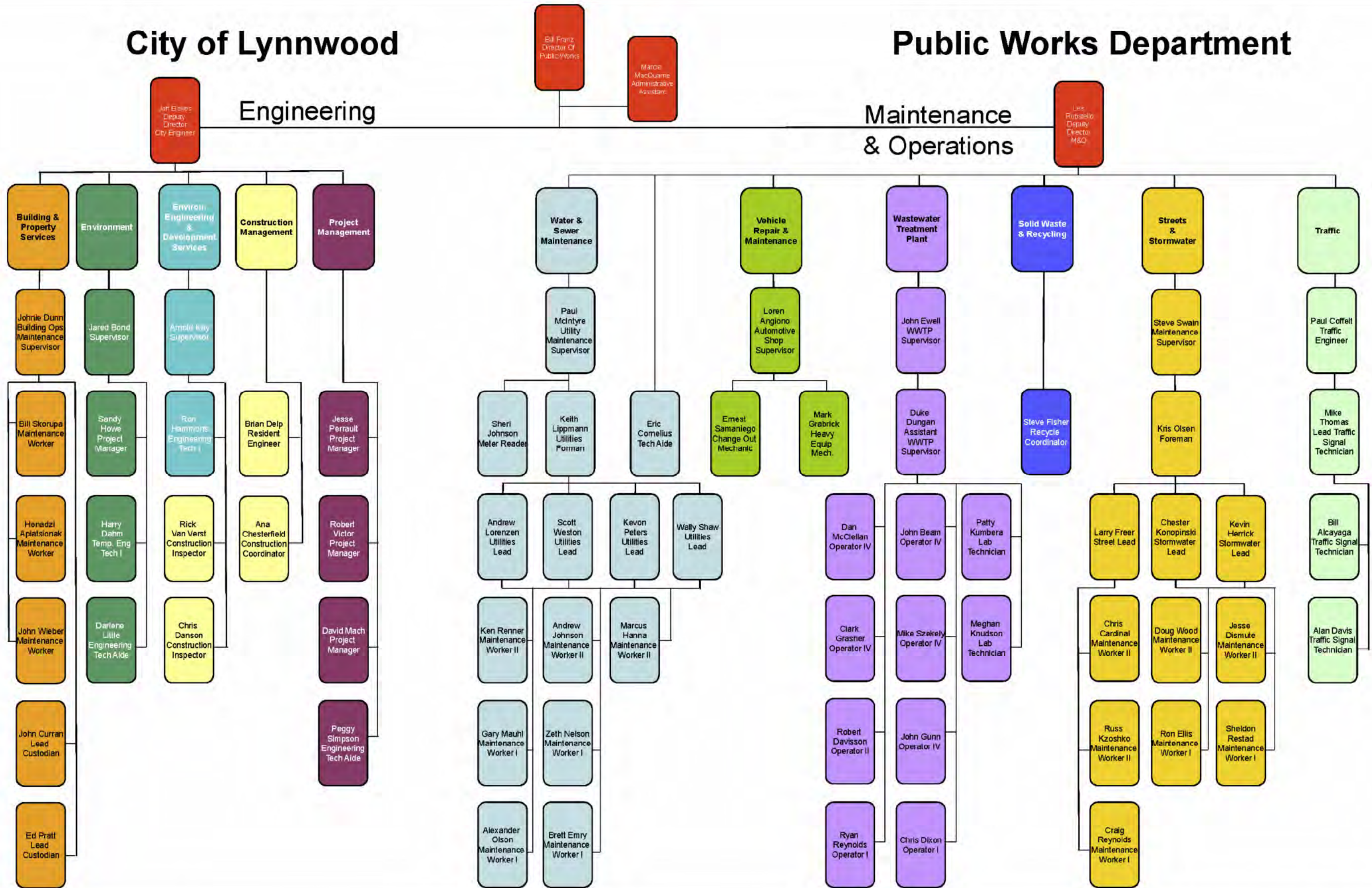
Figure  
**2-2**


**BHC Consultants, LLC**  
 1601 Fifth Avenue, Suite 500  
 Seattle, Washington 98101  
 206.505.3400  
 206.505.3406 (fax)  
 www.bhcconsultants.com



# City of Lynnwood

# Public Works Department



P:\Mapping\Maps\_Generated\Lynnwood\11-10227-01\002\maps\Eng 5-1 Lynnwood\_Org 11x17\_mod 8/14/2012.ctb