

This meeting will be recorded.



Lynnwood Stormwater Planning Workshop



**Public
Workshop**

March 14, 2023
12:00 - 1:00pm

Welcome

& Introductions



Ground Rules



- Use your **computer** to connect to Zoom.



- Use the **chat function** to submit questions and comments and/or request to speak to the group.



- Use a **headset** or take call from a quiet space to reduce background noise/echo.



- Keep your phone or headset **muted** unless you are speaking to the group.

Technology Support



Brent Edgar

Brent@cascadiaconsulting.com

206.390.8378

Project Team

Gretchen Muller



Derek Fada



Matt Fontaine



Mindy Fohn



Opening Remarks



Lynnwood
City Limits

Agenda

| Time | Topic |
|-------------|-------------------------------|
| 10 minutes | Welcome & Introductions |
| 5 minutes | Project Background & Schedule |
| 15 minutes | Identified Actions |
| 10 minutes | Q&A |
| 15 minutes | Discussion |
| 5 minutes | Wrap Up & Adjourn |

Workshop Goals

- Provide a brief description of the project & schedule
- Review the watershed inventory and prioritization steps/results
- Present proposed stormwater management actions for the Middle Scriber Creek and Lake watershed
- Provide an opportunity to address clarifying questions
- Identify next steps and opportunities for feedback

Warmup Exercise

What are you interested in learning about today?

The image shows a meeting control bar with several buttons: Unmute, Start Video, Invite, Participants (with a '2' icon), Share Screen, Chat, Record, and Leave Meeting. Three callout boxes provide instructions for the Unmute, Start Video, Participants, and Chat buttons. The Unmute and Start Video buttons have red slashes over them. The Participants button has a '2' icon. The Chat button has a speech bubble icon. The Leave Meeting button is in red text. Below the Participants button is a sub-menu with icons for 'raise hand', 'yes', 'no', 'go slower', and 'go faster'. Below the Chat button is a chat input field with 'To: Everyone' and a 'More' dropdown menu.

Please leave your **audio muted** and **video off** (both indicated by a red slash).

Click to open the **Participants** box. This will allow you to give nonverbal feedback.

Click to open the **Chat** box. This will allow you to chat with Hosts and Participants.

raise hand yes no go slower go faster

To: Everyone More ▾
Type message here...

What is the Lynnwood
Stormwater Planning Project?

Project Background



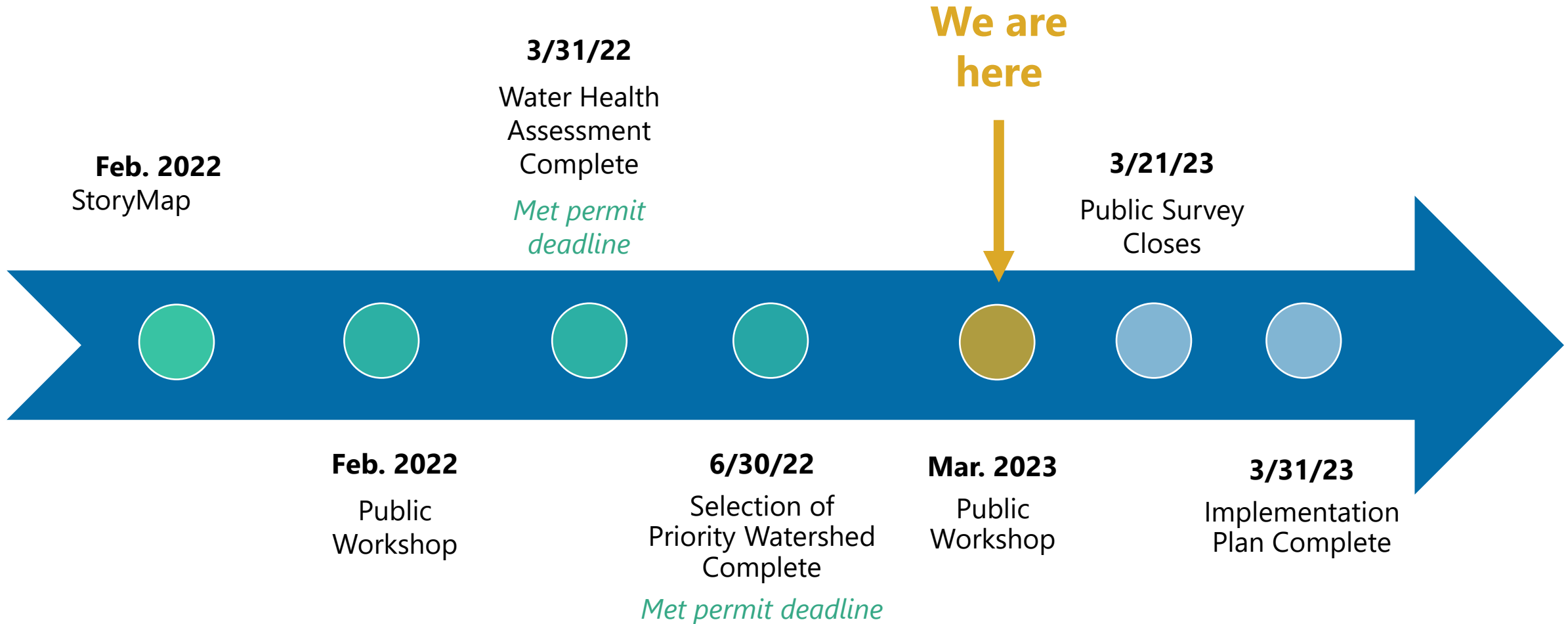
Driver: Municipal Stormwater Permit

- Stormwater planning requirements include a water health assessment, selecting a priority watershed, and developing an implementation plan

Public Input

- Workshop
- StoryMap and Survey

Project Schedule



Terminology

- **Waterway:** Marine water (Puget Sound), fresh water (streams, lakes)
- **Watershed (or basin):** Land area contributing to a waterway
- **Receiving water:** Where stormwater ends up (Puget Sound, streams, lakes)



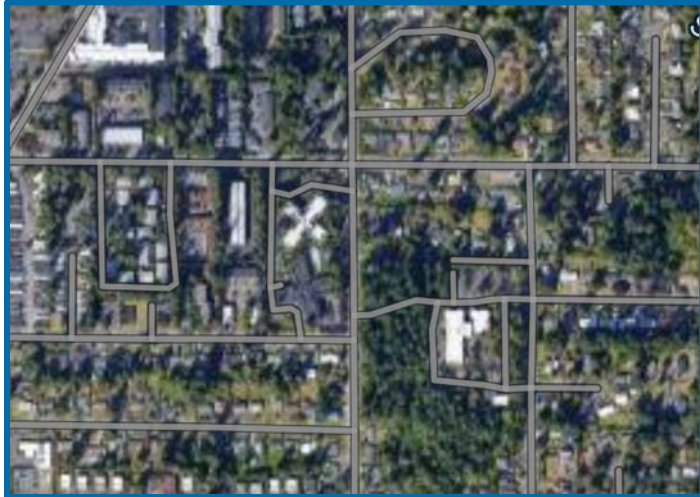
Photo Courtesy City of Lynnwood

Terminology

- **Hard (or impervious) surface:** Paved surfaces (roads, parking lots, driveways, sidewalks).
- **Ecosystem:** Natural resources utilized by wildlife and people
- **Stormwater:** Water that meets hard surfaces
- **Stormwater system:** Drainage conveyance (pipes, ditches) for stormwater

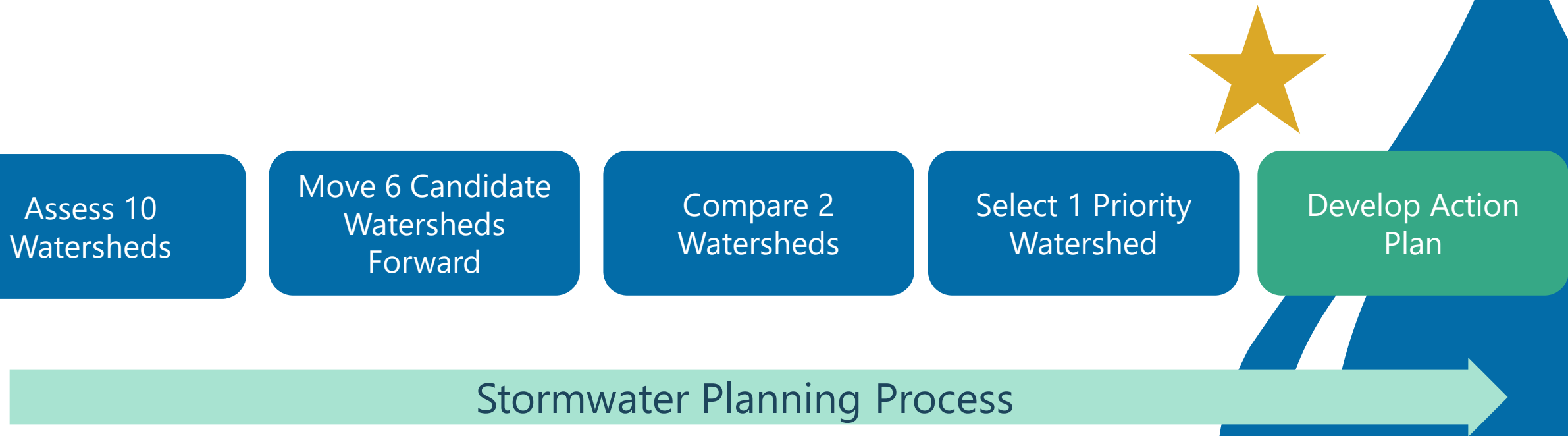


The Journey of Rain



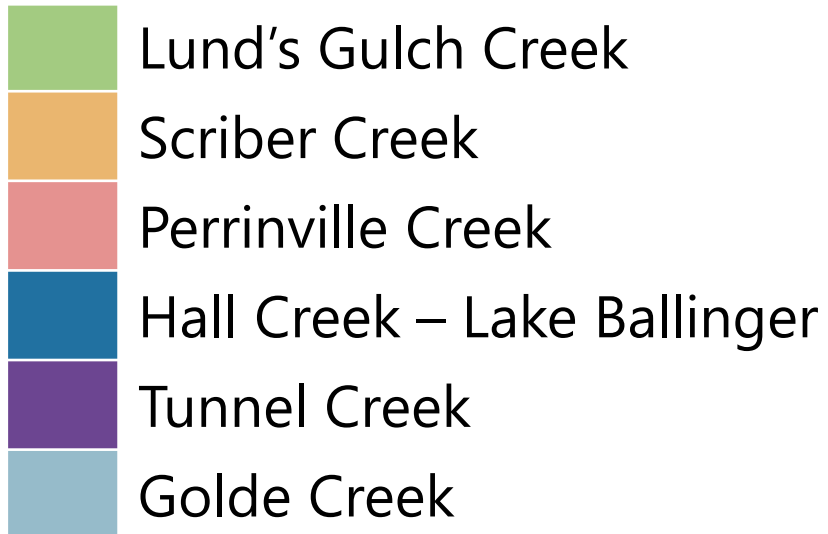
How were watersheds
prioritized?

Watershed Focused Planning

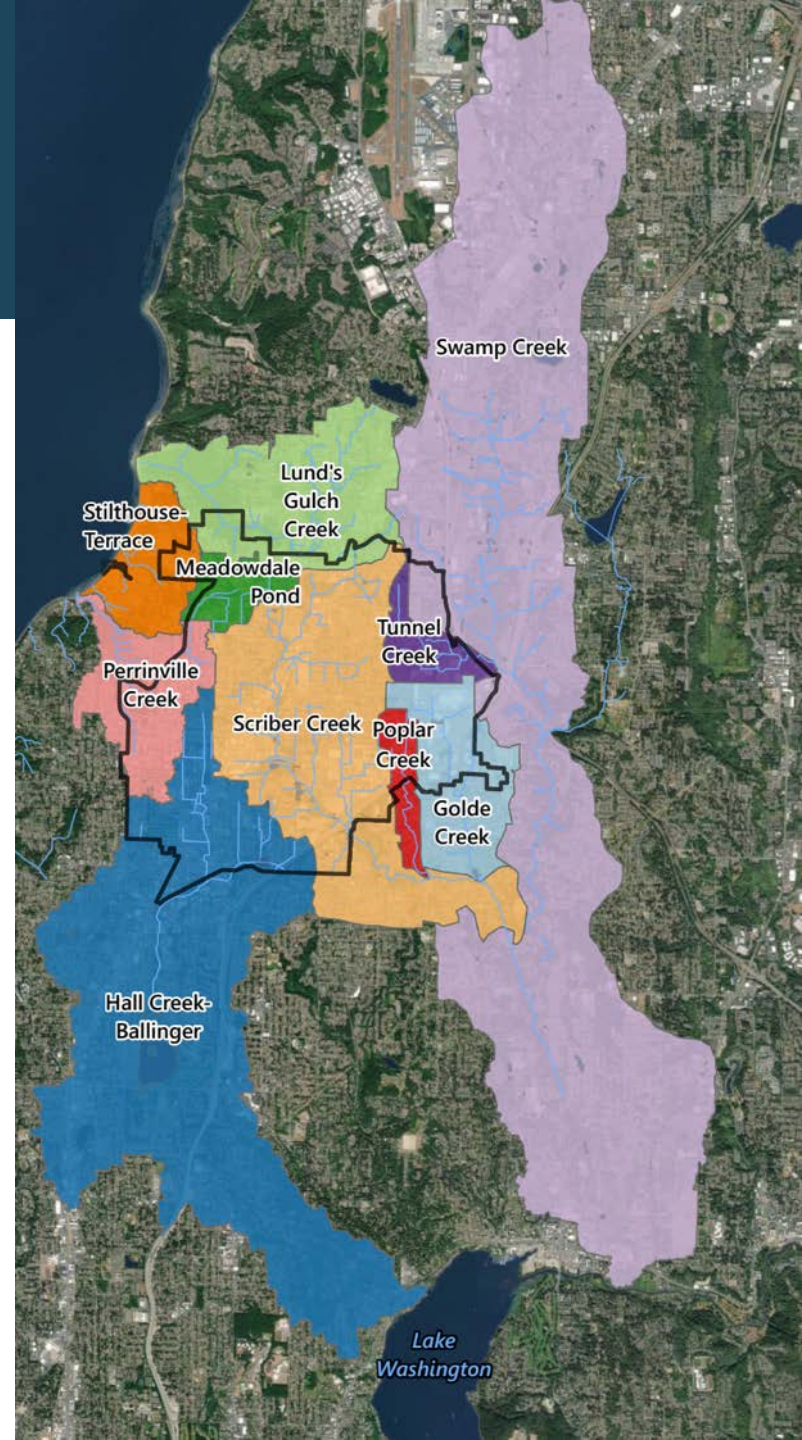
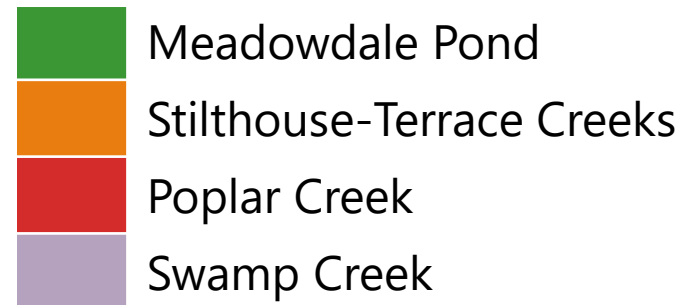


City Watersheds

Candidates



Set Aside



Water Use Importance

| Watershed | Diversity of Salmonid and Trout Species Use | | Acres in Wellhead Area | | ESA Listed Salmon | | Public Recreation Access | | Total Score |
|-------------------------------|---|----------|------------------------|----------|-------------------|----------|--------------------------|----------|-------------|
| | Species Presence | Score | Acres | Score | Y/N | Score | # Areas | Score | |
| Hall Creek - Ballinger | Coho, Fall Chinook, Sockeye, Winter Steelhead, Resident Cutthroat | 3 | 207 | 3 | Yes | 2 | 3 | 2 | 10 |
| Scriber Creek | Coho, Fall Chinook, Resident Cutthroat | 2 | 132 | 3 | Yes | 2 | 3 | 2 | 9 |
| Tunnel Creek | None | 0 | 235 | 3 | No | 0 | 0 | 0 | 3 |
| Golde Creek | None | 0 | 67 | 2 | No | 0 | 0 | 0 | 2 |
| Lund's Gulch Creek | Resident Cutthroat | 1 | 0 | 0 | No | 0 | 1 | 1 | 2 |
| Perrinville Creek | Resident Cutthroat | 1 | 0 | 0 | No | 0 | 0 | 0 | 1 |

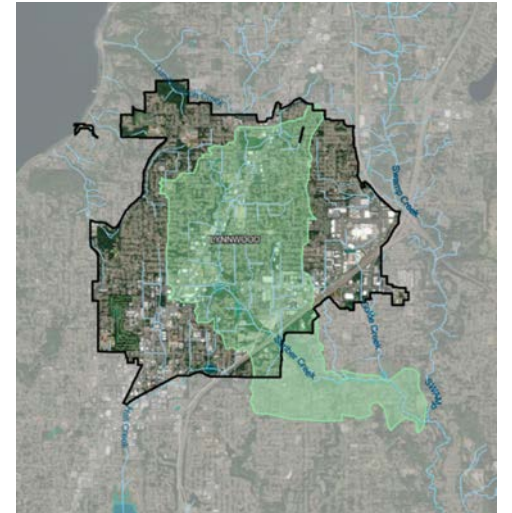
Selecting the Highest Priority Watershed

Hall Creek – Lake Ballinger

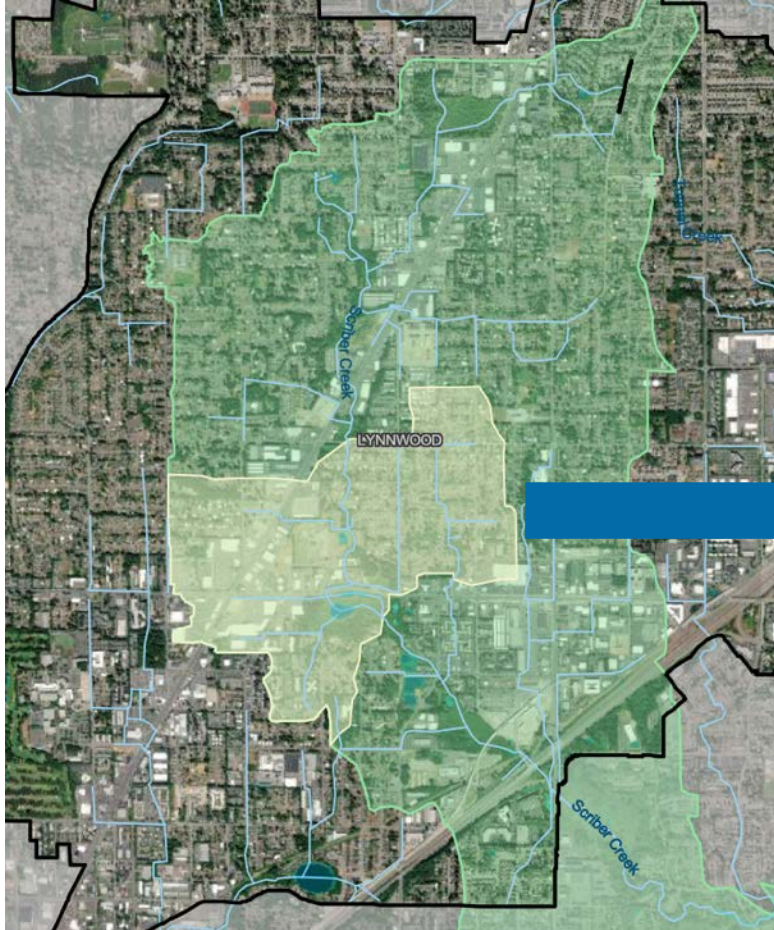
Social Equity:
Similar

Scriber Creek

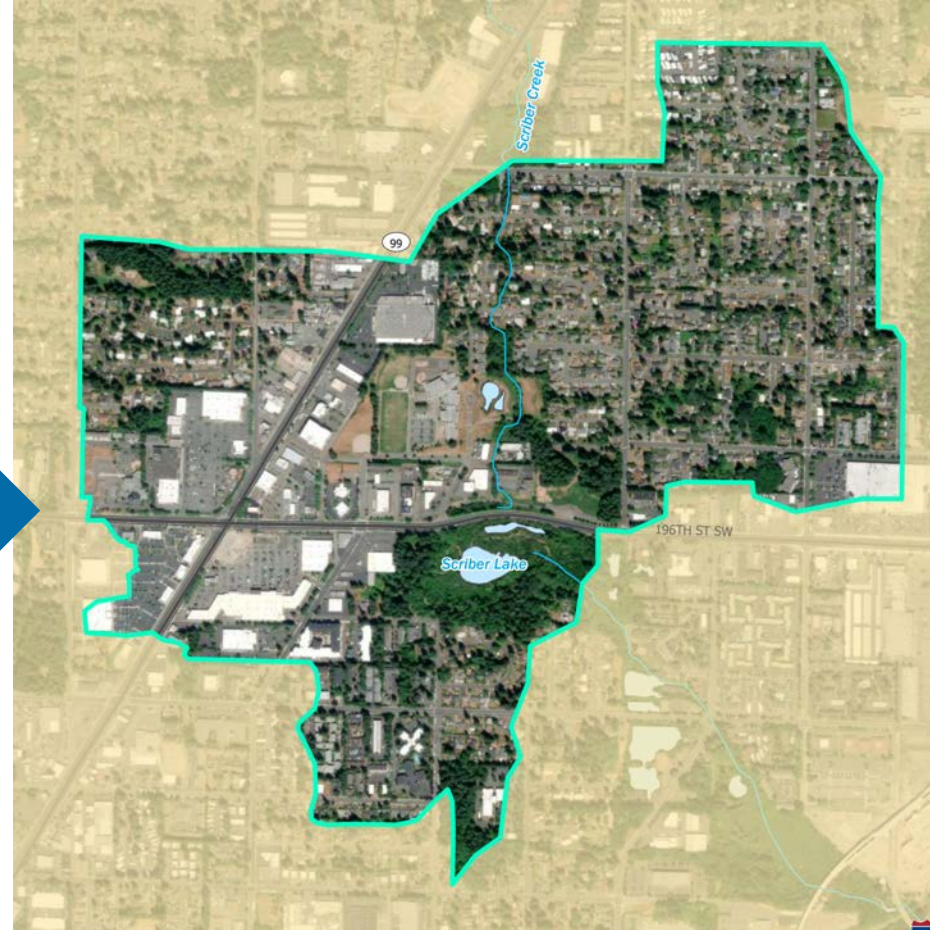
- ✓ City Control
- ✓ Existing projects
- ✓ Public Support



Action Plan Focus Area



Scriber Creek Watershed



Middle Scriber Creek and Scriber Lake Catchment

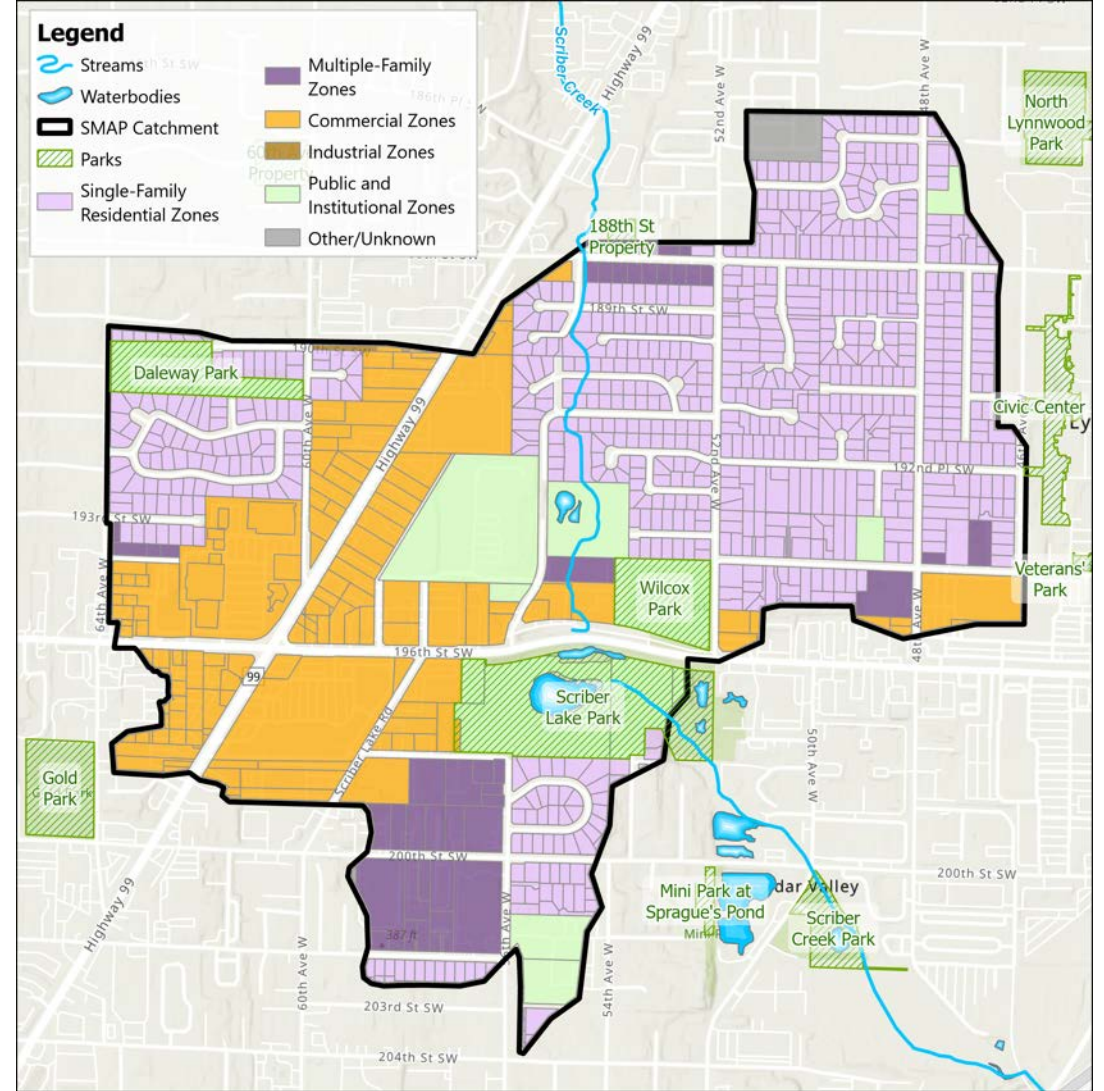
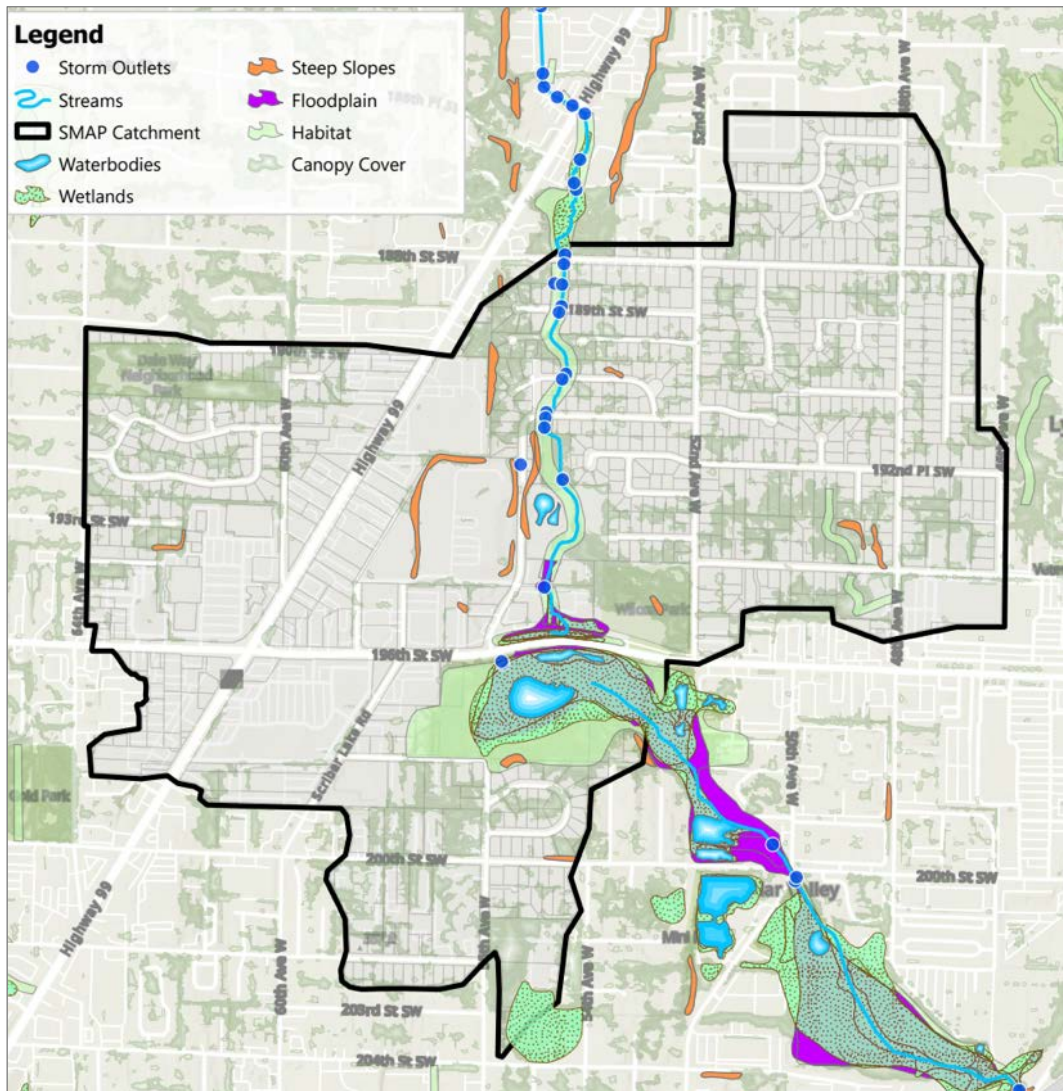
What are the Identified
Stormwater Management Actions
Under Consideration?

Categories of Stormwater Management Actions

- **Stormwater Facility Retrofits:** construction projects or feasibility studies
- **Land Management Strategies:** programs or policies addressing land use or zoning
- **Stormwater Program Enhancements:** program activities above and beyond the Stormwater Permit requirements



Stormwater Management Opportunities



What are the Stormwater Targets?



**Infiltrate
water**



**Reduce
pollutants**



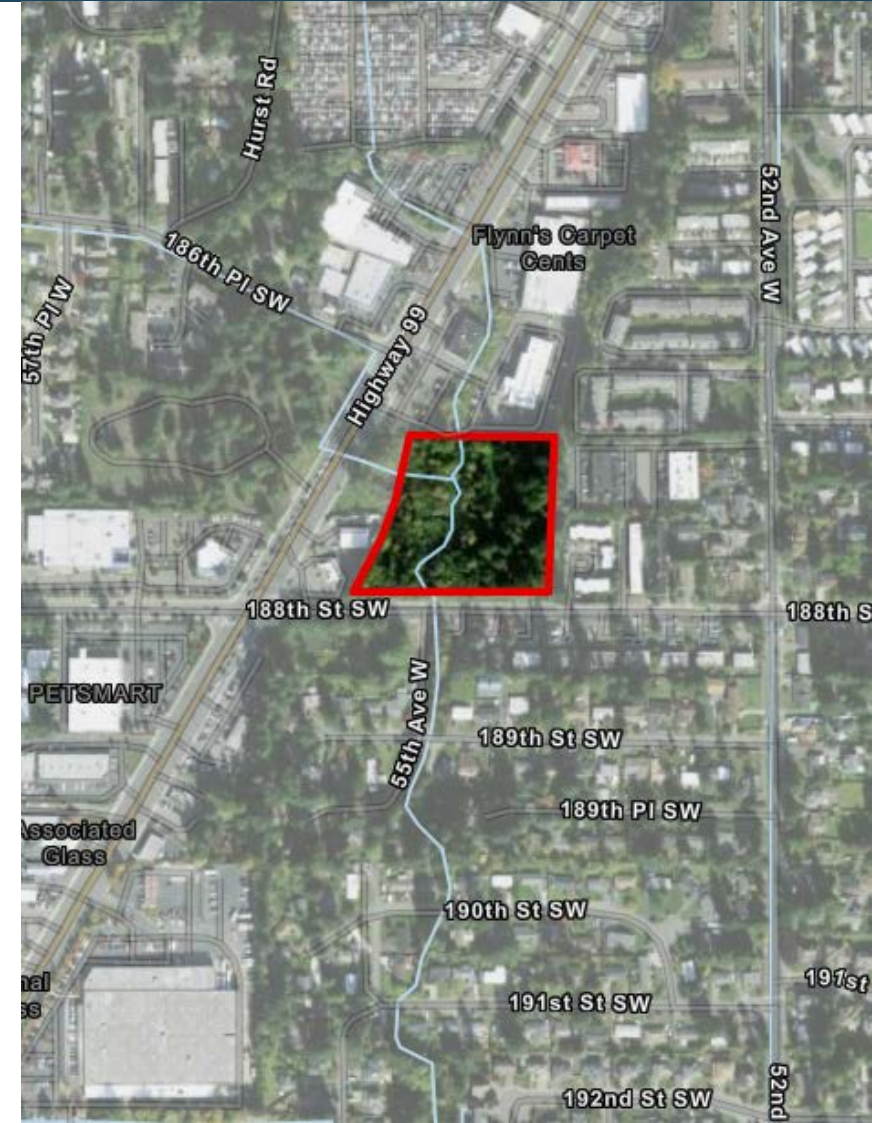
Control flow

Stormwater Retrofit Projects

Increase Floodplain Storage (Upstream of 188th St. SW)



Construct off-channel storage on the property north of 188th Street SW improving control of stormwater flows upon the creek



188th Street Southwest Flood Wall



Construct a short concrete wall near the Scriber Creek culvert crossing to provide additional flood storage



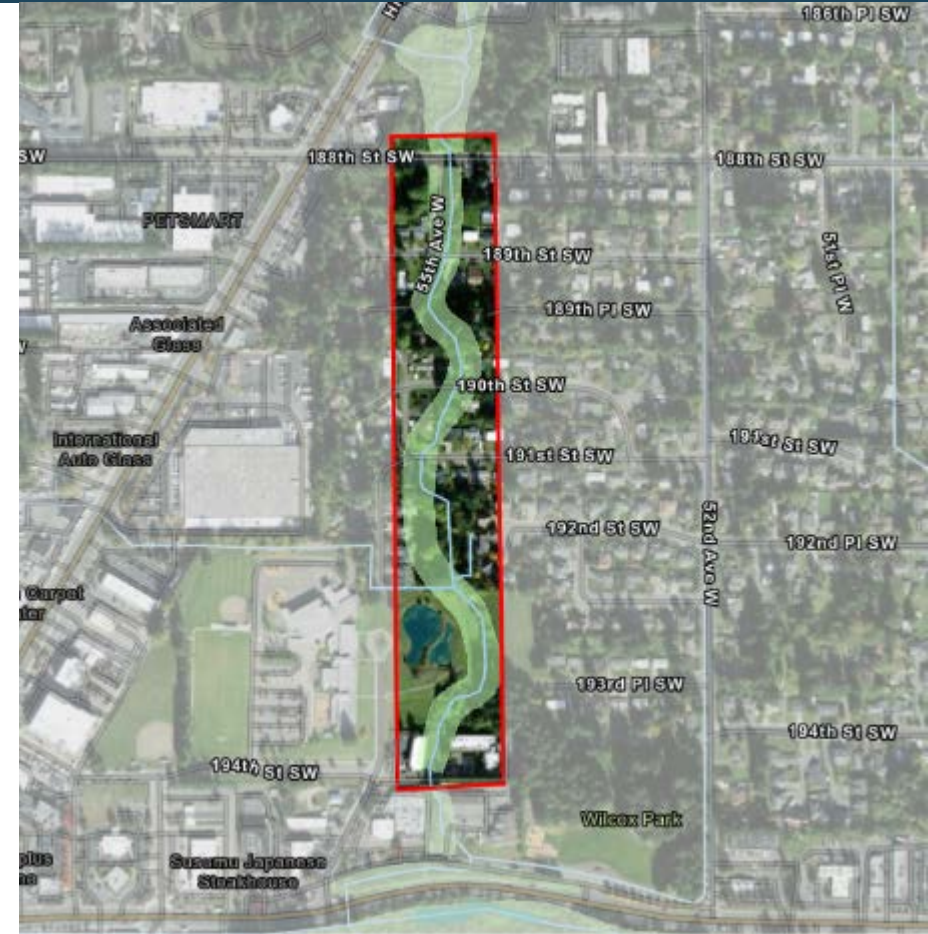
Scriber Creek Floodplain Feasibility Study



Identify frequently flooded locations adjacent to the creek

Determine areas feasible to increase flow control and water quality by constructing floodplain areas.

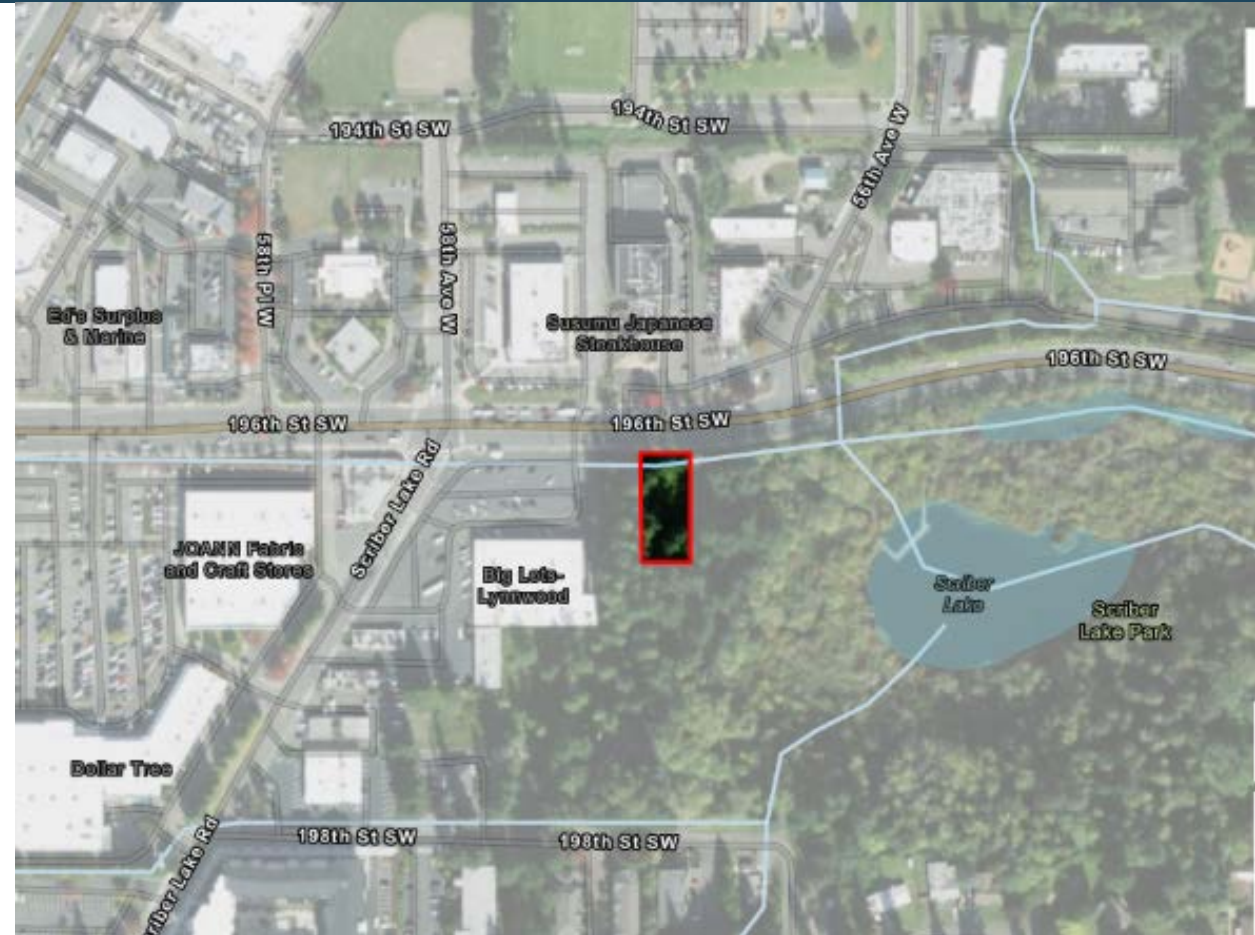
Conduct outreach to property owners, City management and elected officials



Stormwater Treatment Retrofit (of 196th St. SW Outfall to Scriber Lake)



Design a stormwater retrofit to treat and improve water quality from the heavily developed 196th St. corridor before entering Scriber Lake



Land Management Strategies

Apply for Emergency Maintenance Permit

- Coordinate with natural resource agencies and apply for a programmatic hydraulic project approval permit
- Allows the City to conduct rapid response to stormwater facility issues while protecting watercourses



Rain Garden Program

- Conduct outreach and provide technical assistance to residential, small business, and multi-family parcels
- Identify opportunities to locate rain gardens on multiple adjoining properties and in areas of high visibility for outreach



Streamside Landowner Assistance

- Encourage stream buffer improvements by landowners
- Conduct outreach to streamside property owners about the City riparian planting Tree Voucher Program



Identify “Depave” Projects

- Identify hard surface areas (such as sections of parking lots or other paved areas) that are no longer of service to the property owner
- Engage property owners



Water Quality Treatment Retrofits (with Frontage Improvements)

- Determine potential water quality benefit
- Focus on high-use roadways
- Explore code changes, maintenance responsibilities, and impact on maintenance staffing needs

Example water quality treatment of roadway runoff



Stormwater Program Enhancements

Outreach about Bird Fecal Sources

- Water sampling identified birds as the predominant source of fecal pollution.
- Develop and implement an outreach campaign discouraging feeding
- Research other campaigns (i.e. Keep Wildlife Wild)
- Consider partnering with Parks Department



Pet Waste Pick Up Programs

- Identify neighborhood groups, homeowner associations, parks, and multi-family and commercial properties
- If demand is substantial, implement an “adopt-a-pet waste station” program
- Implement a multi-media campaign to promote pet waste pickup



Puget Sound Starts Here regional promotional advertising



Pet waste pick up station

Environmental Educational Signage

Develop and post educational signage around stormwater facilities, the lake and creek at high visibility locations



Assist Businesses to Reduce Pollution

- Identify properties with higher pollution generating risk
- Increase inspection visit frequency
- Provide additional assistance



Enhanced Maintenance Plan

- Complete a system maintenance plan documenting water quality benefits, methods, frequency, and protocols
- Implement the enhanced storm system maintenance plan if it is shown to help the creek and lake



Summary List of Identified Actions

Stormwater Retrofit Projects

- 188th St. Off-Channel Storage
- 188th St. SW Flood Wall
- 196th St. Scriber Lake Inlet Retrofit
- Scriber Creek Floodplain Feasibility Study

Land Management Strategies

- Rain garden program
- Streamside property owner assistance
- Programmatic maintenance permit
- DePave project identification
- Commercial frontage improvements

Stormwater Program Enhancements

- Bird fecal sources education
- Pet waste pick up programs
- Environmental educational signage
- Assist businesses to reduce pollution
- Enhanced maintenance plan

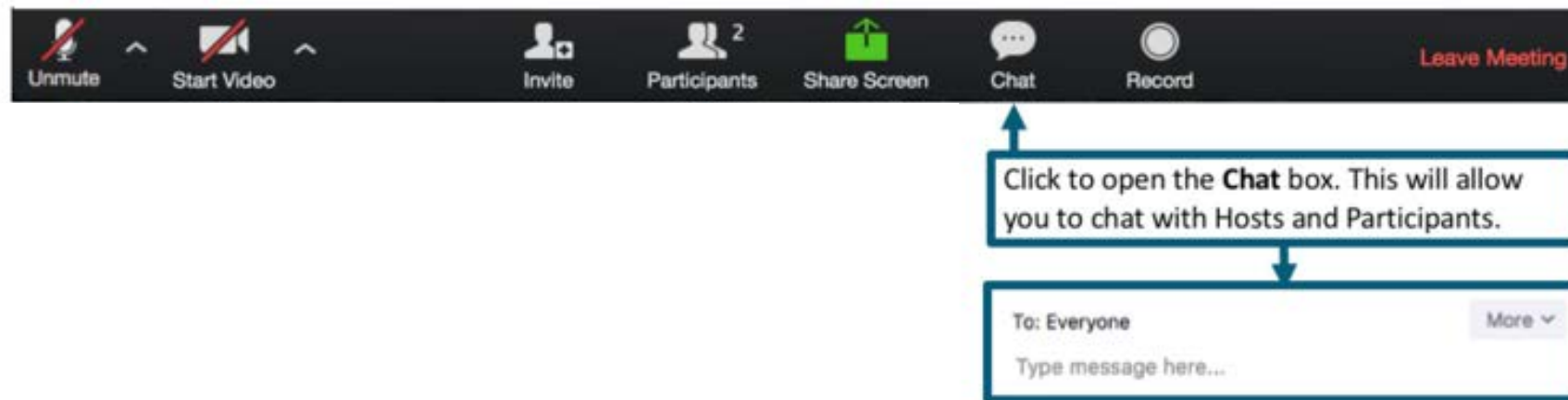


Pause for Questions
from the Chat or Hand Raise

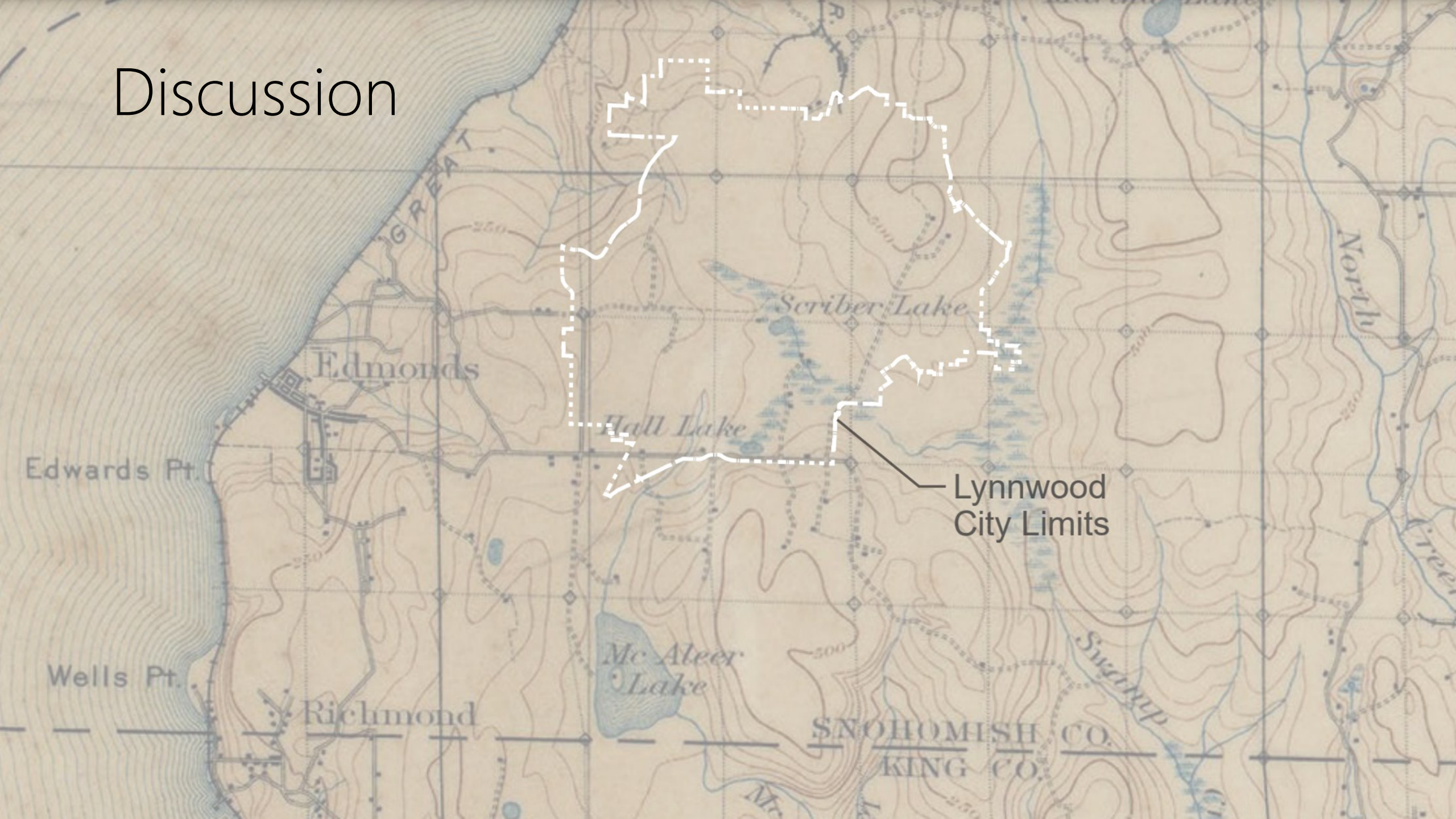
Q&A

Do you have any questions on the content that we covered today?

- Project Background
- Project Schedule
- Key Findings
- Stormwater Actions



Discussion



Lynnwood
City Limits

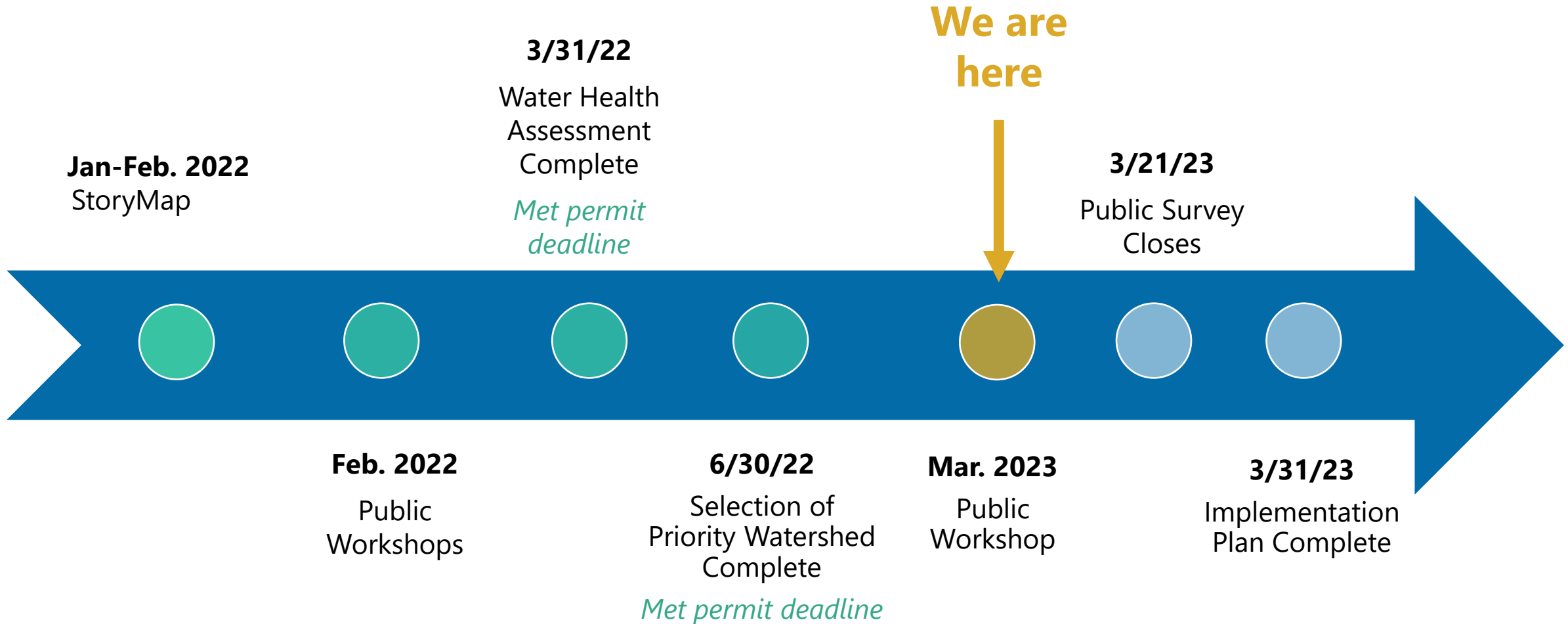
Stormwater Actions Poll

Select the **top three actions** most important to you:

- Rain garden program
- Streamside property owner assistance
- Programmatic maintenance permit
- DePave project identification
- Commercial frontage water quality improvements
- Bird fecal sources education
- Pet waste pick up programs
- Environmental educational signage
- Assist businesses to reduce pollution
- Enhanced maintenance plan

What's Next?

Project Schedule Recap



Visit the Project Web Page

- Relevant documents
- Workshop slides and recording
 - May 2022
 - March 2023 (posted soon)
- StoryMap

Home / Government / Departments / Public Works / Environmental and Surface Water Management
Stormwater Management Action Planning

Stormwater Management Action Planning

Upcoming Public Workshop:

You are invited to our virtual workshop to be held March 14th,

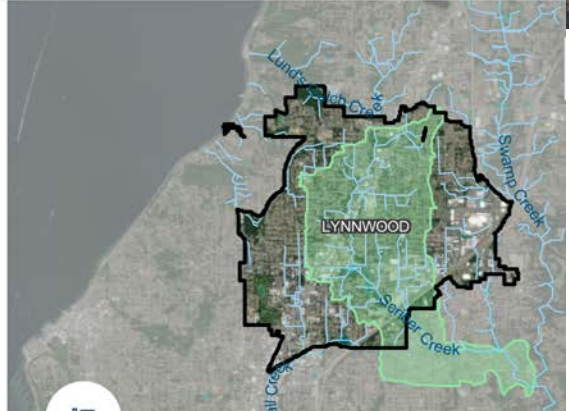
LYNNWOOD WASHINGTON Lynnwood Stormwater Planning

Stormwater Program Overview Scriber Creek Watershed Identified Actions Past

Scriber Creek Watershed

Scriber Creek was selected as Lynnwood's priority watershed

- due to the high impact from



Public Survey

Opportunity to:

- List other strategies or actions
- Add areas for consideration for potential stormwater facility retrofit projects

Scriber Creek Improvement Projects Feedback

We would appreciate your feedback on which stormwater management actions you think would be the most important to improving conditions in Scriber Creek:

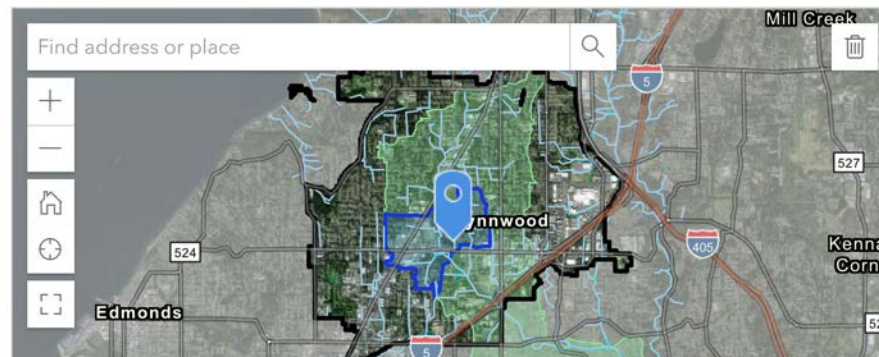
Rank the proposed land management strategies in order of importance:

- Evaluate unused impervious surfaces for future transformation to infiltration
- Apply for a programmatic hydraulic project approval to quickly clear sediment and debris from waterways after storm events
- Focus the rain garden program on the Scriber Creek area
- Explore water quality treatment retrofits when commercial frontage improvements are planned

Add other areas in the Scriber Creek watershed where you've seen uncontrolled and damaging stormwater runoff, for consideration of potential stormwater facility retrofit projects:

Click any spot on the map below to move the point to that location.

Please submit additional surveys if you would like to identify multiple locations.





Contact

Derek Fada

DFada@lynnwoodwa.gov

425.670.5242