

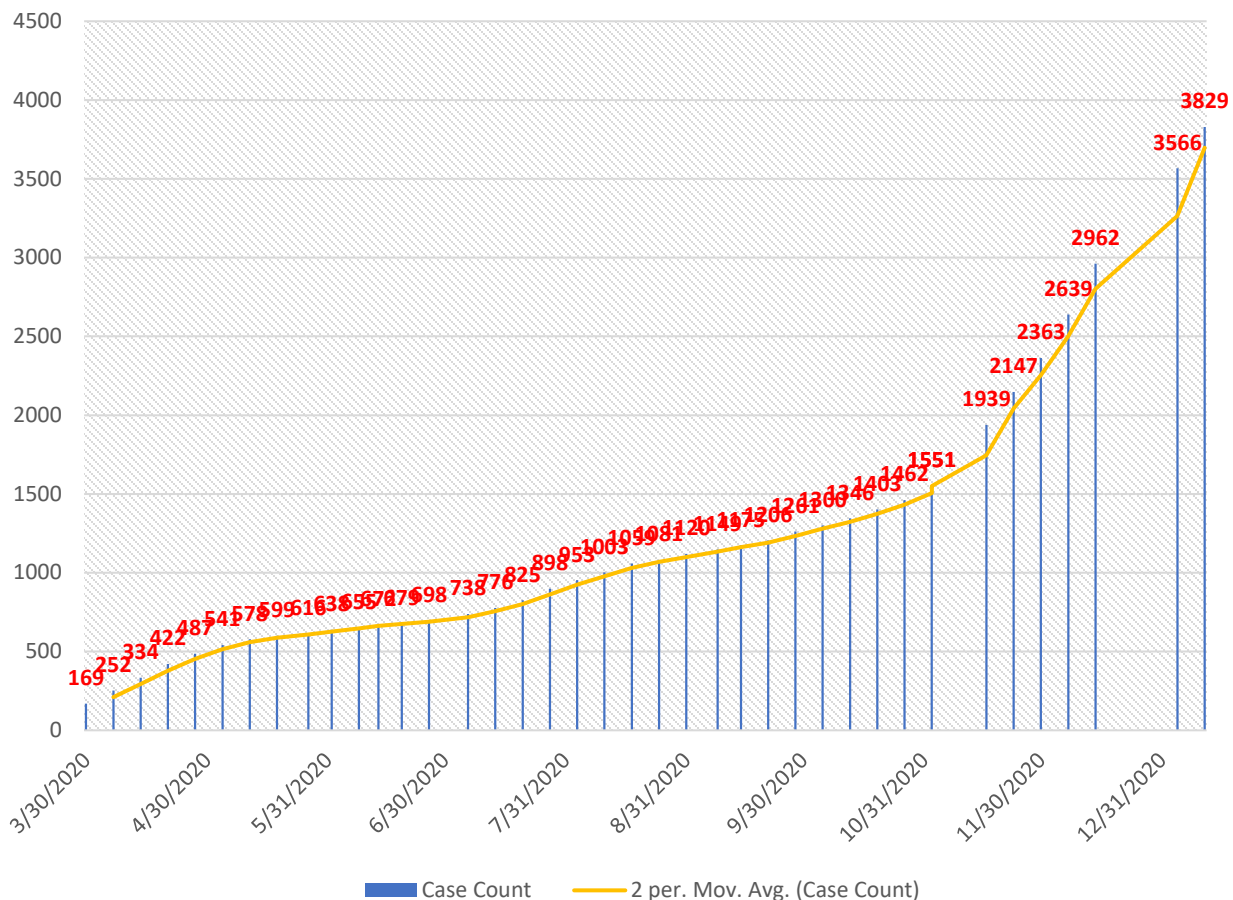
# COVID-19 Council Update

## January 11, 2021

### Current Statistics as of 1/11/2021:

- **Snohomish County** – 26,137 Confirmed/Probable cases (+1,974 cases from 1/4/21)
  - 428 Deaths (+25 from 1/04)
  - 1,625 Hospitalizations
  - 111 currently hospitalized with confirmed COVID-19, 11 patients requiring ventilators
- **Washington State** – 265,312 Confirmed cases; (+19,931 from 1/4/21)
  - 3,699 Deaths statewide (+240 from 1/4/21)
  - 15,978 Hospitalizations
  - 1.3% of Deaths/Confirmed Cases
- **City of Lynnwood** – 3,829 Cases (+263 from 1/04) – 2,478 recovered
  - 45 Deaths (+10 since 11/29/2020)

## Lynnwood Trending



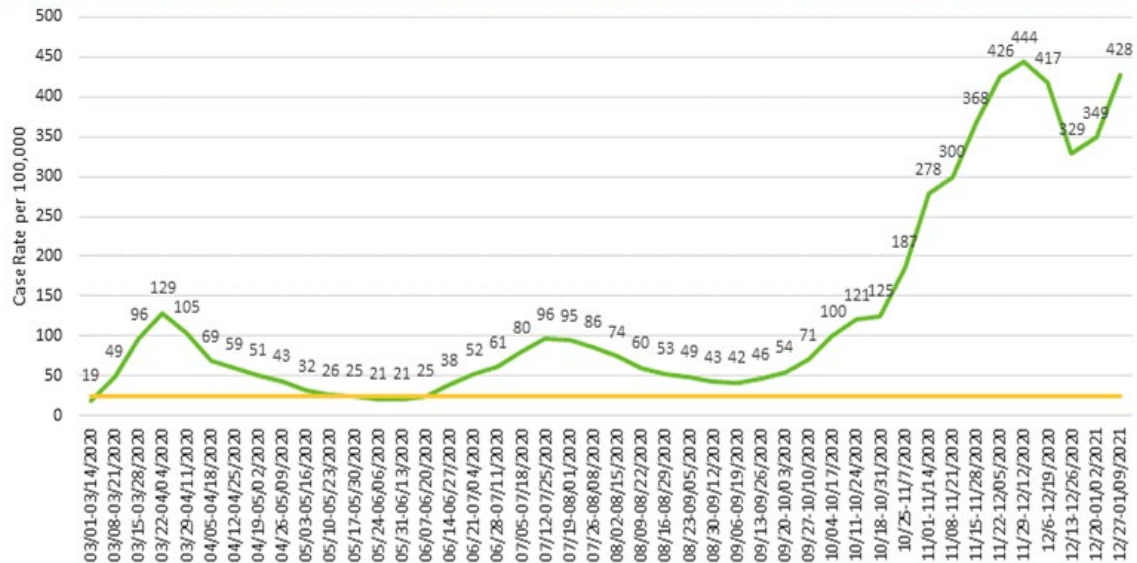
\*Statistics and data compiled from the Snohomish Health District website and the Washington State Department of Health website.

## Status Update:

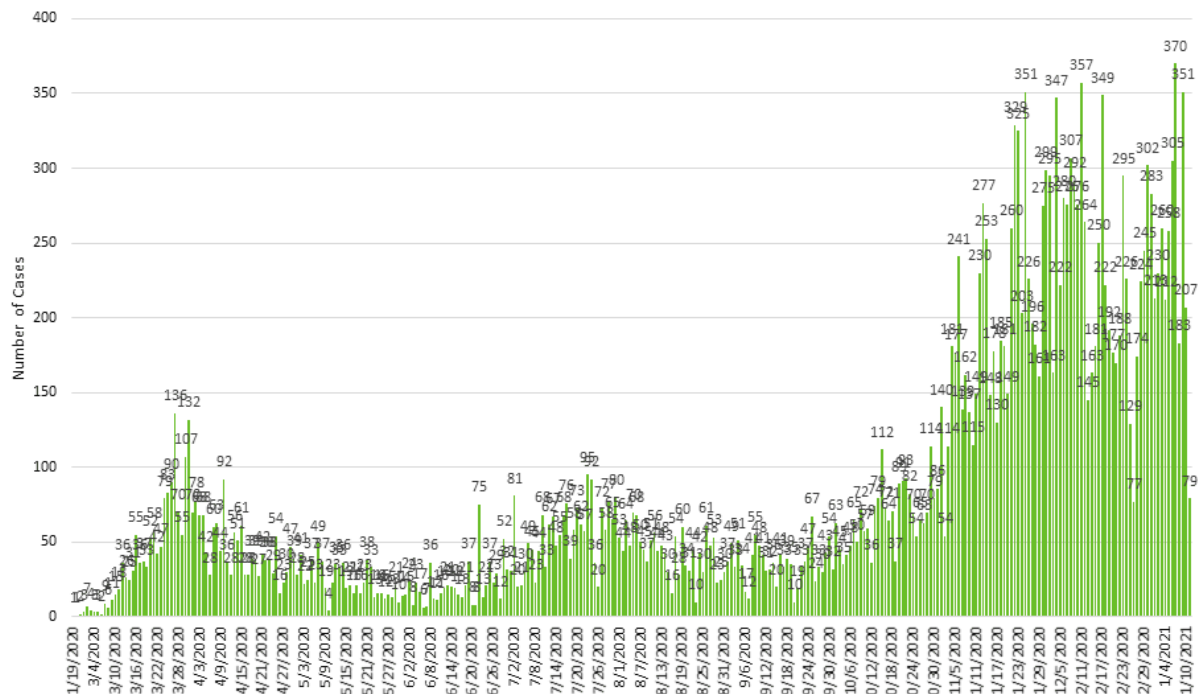
- COVID Case Rate Climb Again:** Case rates are once again on the rise, currently showing 428 cases per 100,000 population for the two-week period ending January 9th.

This is our second highest case rate since the beginning of the pandemic.

**SNOHOMISH COUNTY COVID-19 CASE RATE PER 100,000 FOR 2-WEEK ROLLING PERIOD (UPDATED MONDAYS)**



**COVID-19 CASES REPORTED IN SNOHOMISH COUNTY BY DATE (UPDATED WEEKDAYS)**



- Healthy Washington Plan Phase 1:** Starting today, Snohomish County begins in Phase 1 of Governor Inslee's Healthy Washington – Roadmap to Recovery plan. Phase 1 allows for some modest expansion of economic activity as detailed in the graphic below:

# Healthy Washington - Roadmap to Recovery

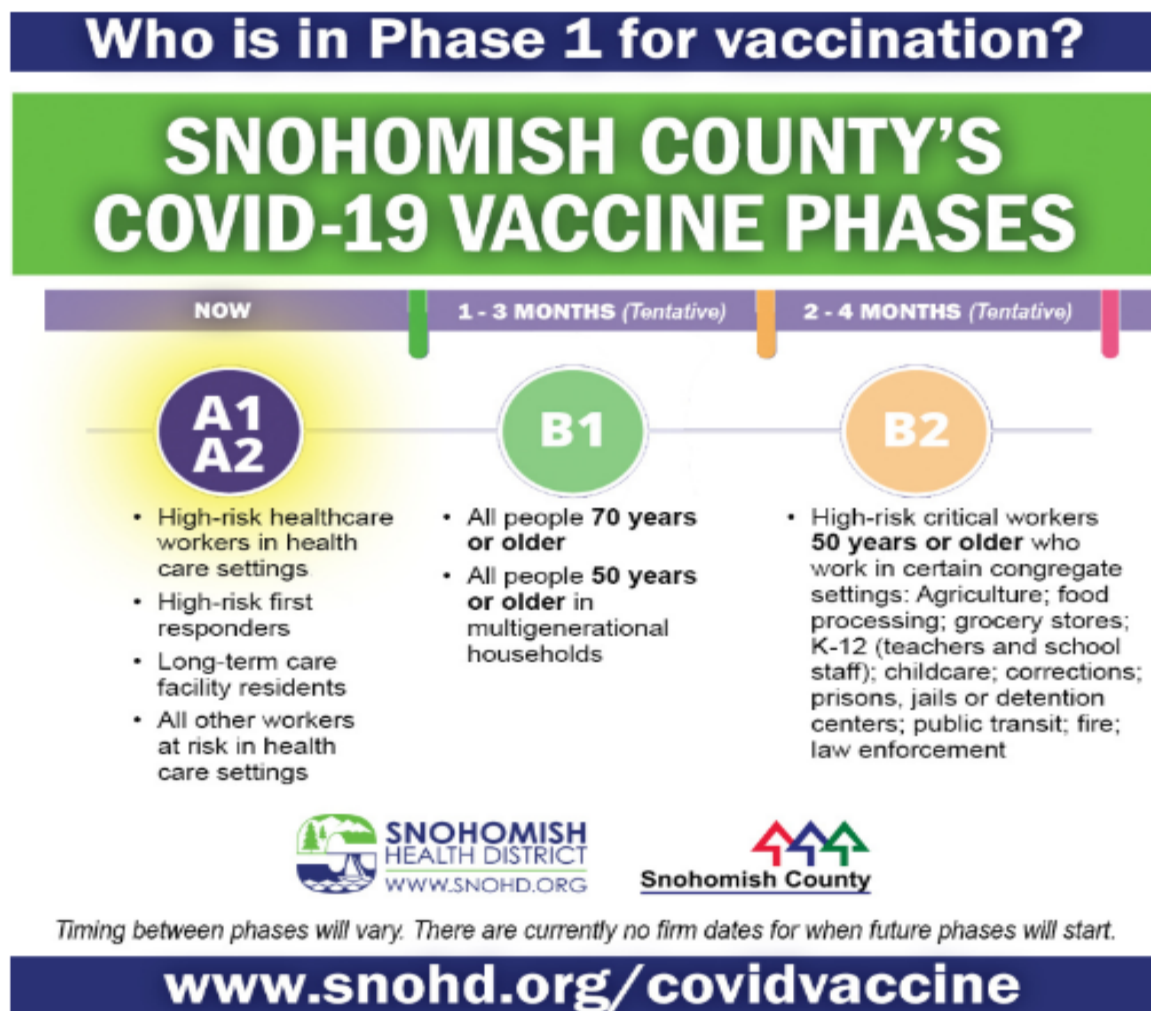
Activities	Phase 1	Phase 2
<b>Social and At-Home Gathering Size — Indoor</b>	Prohibited	Max of 5 people from outside your household, limit 2 households
<b>Social and At-Home Gathering Size — Outdoor</b>	Max of 10 people from outside your household, limit 2 households	Max of 15 people from outside your household, limit 2 households
<b>Worship Services</b>	Indoor maximum 25% capacity	Indoor maximum 25% capacity
<b>Retail Stores</b> (includes farmers' markets, grocery and convenience stores, pharmacies)	Maximum 25% of capacity, encourage curbside pick-up	Maximum 25% of capacity, encourage curbside pick-up
<b>Professional Services</b>	Remote work strongly encouraged, 25% capacity otherwise.	Remote work strongly encouraged, 25% capacity otherwise.
<b>Personal Services</b>	Indoor maximum 25% capacity.	Indoor maximum 25% capacity.
<b>Eating and Drinking Establishments</b> (establishments only serving individuals 21+ and no food remain closed)	Indoor dining prohibited. Outdoor dining, 11 PM close, maximum 6 per table, limit 2 households per table	Indoor dining available 25% capacity, 11 PM close. Outdoor dining available, maximum 6 per table, limit 2 households per table
<b>Weddings and Funerals</b>	Ceremonies are limited to a total of no more than 30 people. Indoor receptions, wakes, or similar gatherings in conjunction with such ceremonies are prohibited.	Ceremonies and indoor receptions, wakes, or similar gatherings in conjunction with such ceremonies are permitted and must follow the appropriate venue requirements. If food or drinks are served, eating and drinking requirements apply. Dancing is prohibited.
<b>Indoor Recreation and Fitness Establishments</b> (includes gyms, fitness organizations, indoor recreational sports, indoor pools, indoor K-12 sports, indoor sports, indoor personal training, indoor dance, no-contact martial arts, gymnastics, climbing)	Low risk sports (including dance, no-contact martial arts, gymnastics, and climbing) permitted for practice and training only in stable groups of no more than 5 athletes. Appointment based fitness/training, 45-minute max session, no more than 1 customer/athlete per room or per 500/sq. ft. for large facilities.	Low and moderate risk sports competitions permitted (no tournaments). Fitness and training maximum 25% capacity.
<b>Outdoor Sports and Fitness Establishments</b> (outdoor fitness organizations, outdoor recreational sports, outdoor pools, outdoor parks and hiking trails, outdoor campsites, outdoor K-12 sports, outdoor sports, outdoor personal training, outdoor dance, outdoor motorsports)	Low and moderate risk sports permitted for practice and training only (no tournaments). Outdoor guided activities, hunting, fishing, motorsports, parks, camping, hiking, biking, running, snow sports, permitted.	Low, moderate, and high-risk sports competitions allowed (no tournaments), maximum 200 including spectators.
<b>Indoor Entertainment Establishments</b> (includes aquariums, indoor theaters, indoor arenas, indoor concert halls, indoor gardens, indoor museums, indoor bowling, indoor trampoline facilities, indoor cardrooms, indoor entertainment activities of any kind, indoor event spaces)	Private rentals/tours for individual households of no more than 6 people permitted. General admission prohibited.	Maximum 25% capacity. If food or drinks are served, eating and drinking requirements apply.
<b>Outdoor Entertainment Establishments</b> (includes zoos, outdoor gardens, outdoor aquariums, outdoor theaters, outdoor stadiums, outdoor event spaces, outdoor arenas, outdoor concert venues, rodeos)	Ticketed events only: Groups of 10, limit 2 households, timed ticketing required.	Groups of 15, limit 2 households per group, maximum 200 including spectators.

NOTE: Live entertainment is no longer prohibited but must follow guidance above for the appropriate venue. Long-term Care facilities, professional and collegiate sports remain governed by their current guidance/proclamations separate from this plan.

- In order to move onto Phase 2, a region must meet the following criteria:
  - A 10 percent or greater decrease in the rate of COVID cases per 100,000 population in most recent 14-day period compared to the prior 14-day period
  - A 10 percent or greater decrease in the rate of new COVID hospital admission rates per 100,000 in most recent 14-day period compared to the prior 14-day period
  - Test positivity of less than 10% for the most 7-day period measured
  - Total ICU occupancy of less than 90% for the most recent 7-day period measured
- **Vaccinations Being Administered in Phase 1A:** Among the first people in Snohomish County to receive COVID-19 vaccinations are workers in health care settings, high-risk first responders, residents and staff of nursing homes, assisted living facilities, and other community-based, congregate living settings where most individuals are over 65 years or age and receiving care, supervision, or assistance. Lynnwood Police Department first responders under Phase 1A are being actively vaccinated and scheduled voluntarily.
- Snohomish Health District has created a new webpage to provide information on the current vaccination activities, upcoming phases, and information on how to locate and register for vaccinations. The site can be located here <https://snohomish-county-coronavirus-response-snoco-gis.hub.arcgis.com/pages/covid-19-vaccine>.
- Snohomish Health District and DEM currently have two active vaccination Points of Distribution (PODs) operational within Snohomish county. One is located at Paine Field, and the other is located at our very own Edmonds College.

- Vaccine data will be reported by the Snohomish Health District on Tuesdays, with information through the previous Saturday (<https://www.snohd.org/564/COVID-Vaccine-Info>). The following data is as of **January 2, 2021**:

	Total doses received	No. of providers that received vaccine	Total doses administered	Expected allocation for week 4	No. of providers enrolled
<b>Moderna</b>	23,800	11	7,357	4,700	
<b>Pfizer</b>	5,850	1	3,165	3,900	
<b>Total</b>	<b>29,650</b>	<b>12</b>	<b>10,522</b>	<b>8,600</b>	<b>39</b>



For more information on the COVID vaccination distribution for Snohomish County, visit [www.snohd.org/covidvaccine](http://www.snohd.org/covidvaccine) or for detailed information on future phases visit: [https://www.snohd.org/DocumentCenter/View/6198/VaccinePhases\\_SnoCo?bidId=](https://www.snohd.org/DocumentCenter/View/6198/VaccinePhases_SnoCo?bidId=)

- Paycheck Protection Program Reopens this week:** The U.S. Small Business Administration (SBA) on Friday announced that the Paycheck Protection Program (PPP) will re-open the week of Jan. 11 for new borrowers and certain existing PPP borrowers. To promote access to capital, initially only community financial institutions will be able to make First Draw PPP Loans on Monday, Jan. 11, and Second Draw PPP Loans on Wednesday, Jan. 13. The PPP will open to all participating lenders shortly thereafter.

This round of the PPP continues to prioritize millions of Americans employed by small businesses by authorizing up to \$284 billion toward job retention and certain other expenses through March 31, 2021, and by allowing certain existing PPP borrowers to apply for a Second Draw PPP Loan.

- **REMINDERS**

- Staying home is still the safest. If you do go out, keep it quick, keep your distance and wear a face covering. Recreate and do business locally to avoid spreading the virus across county lines. Limit the number of people outside of your household that you gather with every week. If you feel symptoms of COVID-19, get tested.

- **Symptoms:** Fever, Chills, Cough, Difficulty breathing, Fatigue, Muscle pain or body aches, Headache, Sore throat, Runny nose or nasal congestion, or New loss of taste or smell.

- **Asymptomatic individuals:** If you are a close contact of a confirmed case, or Live in a congregate setting, like a shelter, group home or assisted living facility, or Work in a location that has had a case, Part of a family or social network that has had a case, or Work in healthcare, EMS, law enforcement or other fields where work settings have a higher risk of catching or spreading COVID-19, or Are part of a racial or ethnic group that has been disproportionately impacted by this virus in terms of rate or severity of cases (this includes people who are Black, Latinx, Native American/Alaskan Native, or Pacific Islander).

- **Extended Telecommuting:** The EOC Command Staff along with Mayor Smith have made the decision to extend employee telecommuting through the end of the first quarter of 2021.

- **CARES Act Funding:** The City of Lynnwood is eligible to receive \$1,782,000 in federal CARES Act Funding.

- Recap of \$1,782,000 CARES Act Funding allocations:

- Technology Costs \$220,000
    - Payroll Costs (estimates) \$60,000
    - COVID-related expenses \$208,000
    - Business Relief Fund \$800,000
    - Community Relief Fund \$250,000
    - Additional city expenses related to COVID-19 \$194,000
    - Grant to the Lynnwood Food Bank \$50,000

- Sub-recipient Grant from Snohomish County for Small Business Grant Program: \$231,596