

COVID-19 Council Update

January 25, 2021

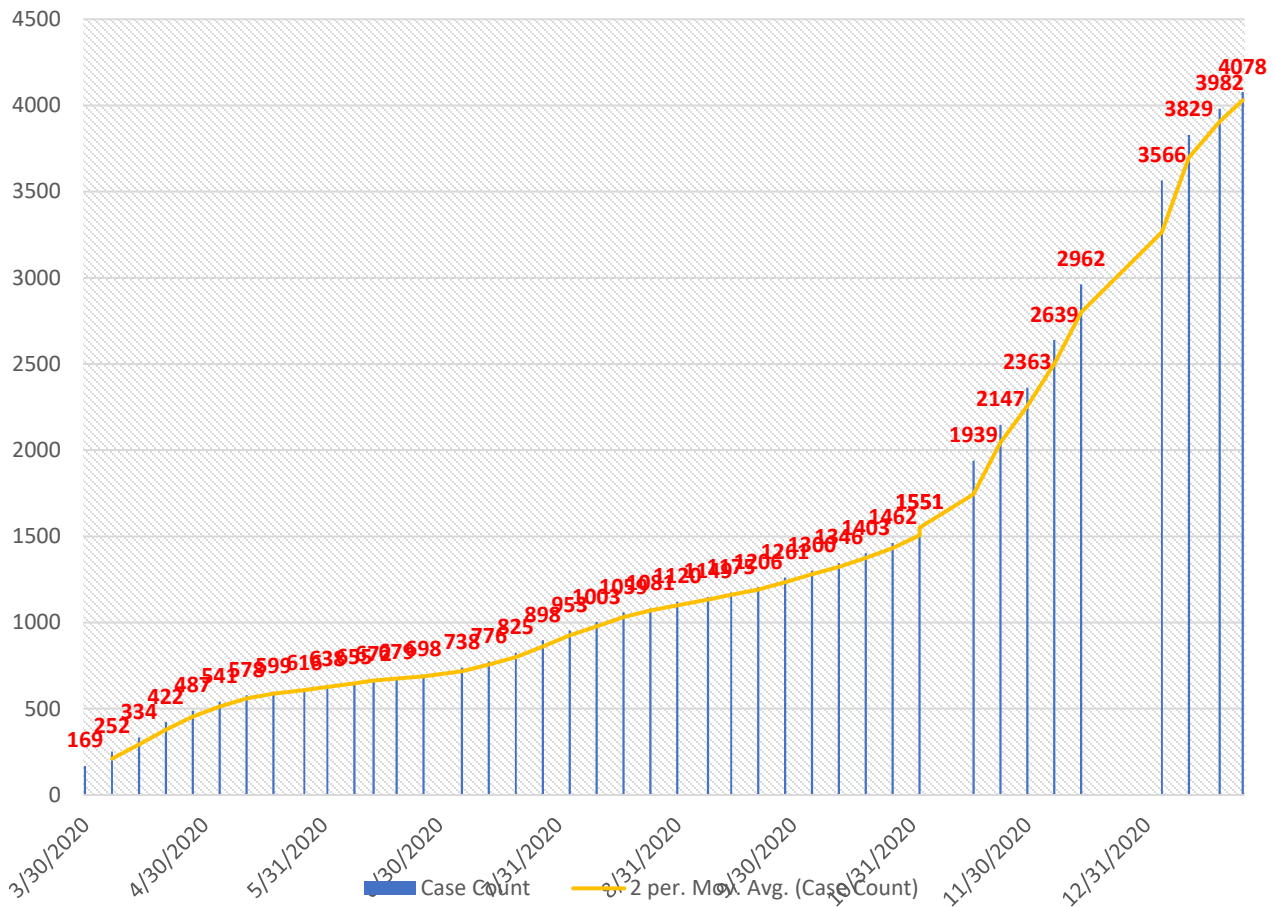
Current Statistics as of 1/25/2021:

- **Snohomish County** – 27,996 Confirmed/Probable cases (+656 cases from 1/19)
 - 465 Deaths (+7 from 1/19)
 - 1,786 Hospitalizations
 - 58 currently hospitalized with confirmed COVID-19, 7 patients requiring ventilators

- **Washington State** (last updated on 1/23/2021)– 287,031 Confirmed cases; (+9,627 from 1/19)
 - 4,114 Deaths statewide
 - 17,129 Hospitalizations
 - 1.4% of Deaths/Confirmed Cases

- **City of Lynnwood** – 4,078 Cases (+96 from 1/19) – 3,382 recovered
 - 45 Deaths

Lynnwood Trending

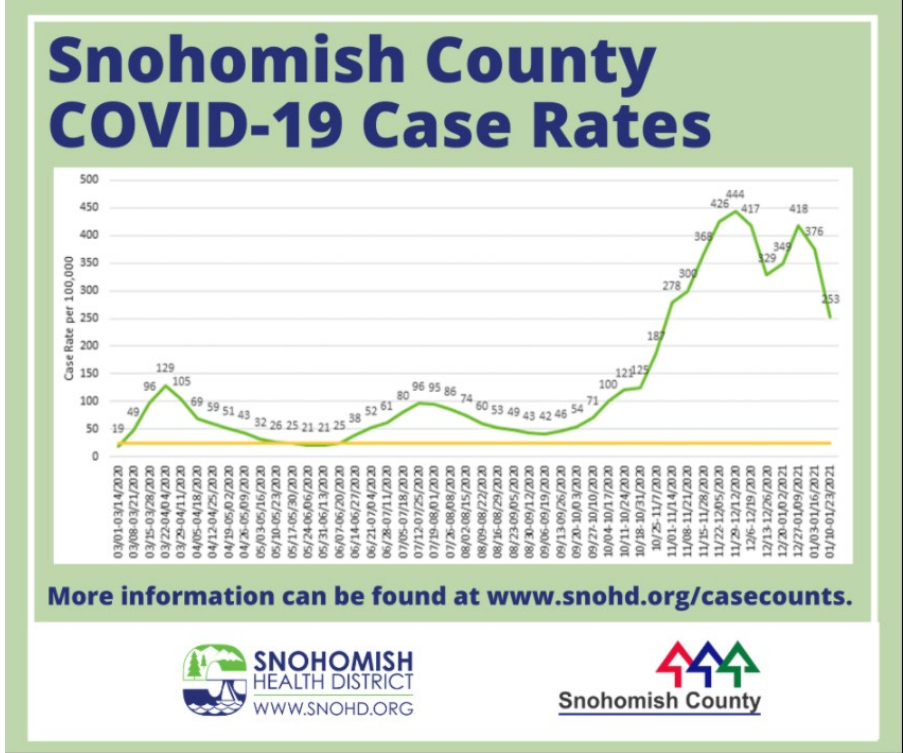


*Statistics and data compiled from the Snohomish Health District website and the Washington State Department of Health website.

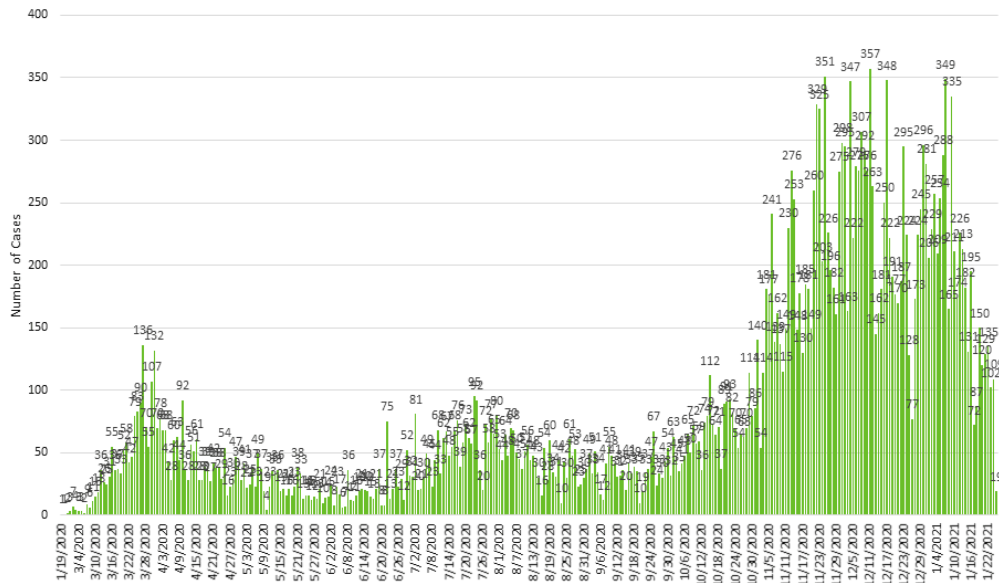
Status Update:

- **COVID Case Update:** We are headed in the right direction Snohomish County, but still have a long way to go. COVID case rates have been declining in recent weeks and are currently at 253 per 100,000 population for the two-week period ending Jan. 23.

Please keep practicing the three W's: Wear a Mask; Wash your Hands; Watch your distance.

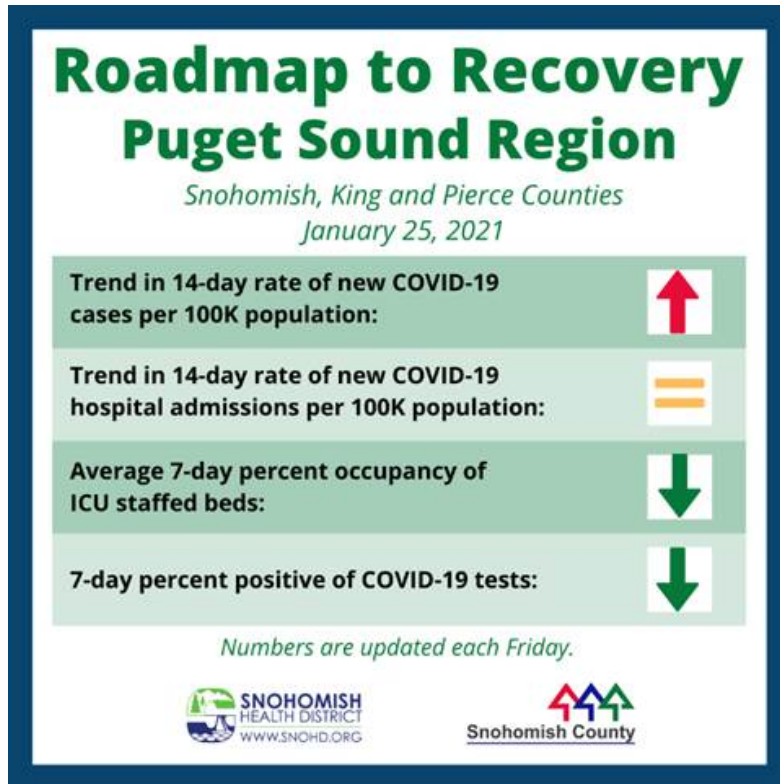


COVID-19 CASES REPORTED IN SNOHOMISH COUNTY BY DATE (UPDATED WEEKDAYS)



- **Snohomish County remains in Phase 1:** The Puget Sound Region, which includes Snohomish, King and Pierce counties, will remain in Phase 1 for the next week. Unfortunately, case rates have risen by 23% and hospital admission rates were relatively flat.

In order to advance to the next phase, we will need to see decreases on all four metrics. Wear a mask, avoid crowds and stay home if you are feeling sick. http://bit.ly/WA_RtoR



- **COVID questions? We have a call center:** We know there are a lot of questions right now about COVID, particularly when it comes to access to vaccines. The COVID call center is a resource: 425-339-5278. Because demand is high, we ask that people first contact their regular health care provider to determine if vaccine appointments are being made. Additional information also is available on <https://www.snohd.org/564/COVID-Vaccine-Info> and bit.ly/SnoCoHub. If you are unable to register for a vaccine appointment that likely means all slots are filled for the day.


The call center also is a resource for those who lack internet access or who may face challenges communicating in English.




- **Now in Phase 1b1 of the Vaccination Plan:** Snohomish County’s vaccine supply remains low and appointments can be difficult to secure. Contact your primary care physician or pharmacy to inquire of their vaccine plan and availability or visit www.snohd.org/covidvaccine or call the COVID Call Center at 425-339-5278 for help.

Updates to who is eligible for COVID vaccine

- All people **65 years or older**
- People **50 or older in multigenerational households** (2 or more generations)
 - Example: An older adult who cannot live alone and is being cared for by a relative or in-home caregiver, or an older adult who shares the home with a grandchild.
- Workers in **health care settings**
- High-risk **first responders**
- Residents and staff of **nursing homes, assisted living facilities,** and other community-based, congregate living settings where individuals over 65 receive care, supervision, or assistance




COVID Vaccine




www.snohd.org/covidvaccine

• bit.ly/SnoCoHub





- **First state cases of UK COVID-19 strain found in Snohomish County:** The Snohomish Health District, the state Department of Health and the UW Medicine Virology Lab on Saturday announced that the B.1.1.7 variant of COVID-19 has been found in testing samples from Snohomish County – the first in Washington. [Read the full press release here.](#)

The U.K. variant (B.1.1.7), now confirmed to be in Snohomish County, is easier to spread from one person to another.



It's more important than ever to:

- **Wear a mask**
- **Wash your hands**
- **Watch your distance and limit gatherings**
- **Get a vaccine when it's your turn**

 www.snohd.org/covid 

- **Verdant Health Commission to Host Drive-Thru Testing Events:** COVID-19 testing remains a critically important step to decreasing spread of the virus. With COVID rates remaining at high levels and vaccine roll out ramping up slowly, getting tested for COVID-19 and taking precautions to prevent the spread of the virus remain vital. Free, drive-thru testing events are scheduled to take place:
 - Wednesday, Jan. 27 from 8 a.m. – 2 p.m. at Meadowdale High School, 6002 168th St. SW, Lynnwood
 - Friday, Jan. 29 from 8 a.m. – 2 p.m. at Mountlake Terrace High School, 21801 44th Ave. W, Mountlake Terrace
 - Thursday, Feb. 4 from 8 a.m. – 2 p.m. at Meadowdale High School, 6002 168th St. SW, Lynnwood
 - Friday, Feb. 5 from 8 a.m. – 2 p.m. at Mountlake Terrace High School, 21801 44th Ave. W, Mountlake Terrace

Coordinated by Medical Teams International and the Verdant Health Commission, with support from the Edmonds School District, City of Mountlake Terrace, and City of Lynnwood, these clinics are intended to reduce barriers to testing, including symptom checks, insurance requirements, and access for people with transportation challenges. Pre-registration is not available for this testing. Learn more: <http://bit.ly/3t6yd3Q>

- **REMINDERS**
 - Staying home is still the safest. If you do go out, keep it quick, keep your distance and wear a face covering. Recreate and do business locally to avoid spreading the virus across county lines. Limit the number of people outside of your household that you gather with every week. If you feel symptoms of COVID-19, get tested.
 - **Symptoms:** Fever, Chills, Cough, Difficulty breathing, Fatigue, Muscle pain or body aches, Headache, Sore throat, Runny nose or nasal congestion, or New loss of taste or smell.
 - **Asymptomatic individuals:** If you are a close contact of a confirmed case, or Live in a congregate setting, like a shelter, group home or assisted living facility, or Work in a location that has had a case, Part of a family or social network that has had a case, or Work in healthcare, EMS, law enforcement or other fields where work settings have a higher risk of catching or spreading COVID-19, or Are part of a racial or ethnic group that has been disproportionately impacted by this virus in terms of rate or severity of cases (this includes people who are Black, Latinx, Native American/Alaskan Native, or Pacific Islander).

- **Extended Telecommuting:** The EOC Command Staff along with Mayor Smith have made the decision to extend employee telecommuting through the end of the first quarter of 2021.
- **CARES Act Funding:** The City of Lynnwood is eligible to receive \$1,782,000 in federal CARES Act Funding.
 - Recap of \$1,782,000 CARES Act Funding allocations:

▪ Technology Costs	\$220,000
▪ Payroll Costs (estimates)	\$60,000
▪ COVID-related expenses	\$208,000
▪ Business Relief Fund	\$800,000
▪ Community Relief Fund	\$250,000
▪ Additional city expenses related to COVID-19	\$194,000
▪ Grant to the Lynnwood Food Bank	\$50,000
- Sub-recipient Grant from Snohomish County for Small Business Grant Program: \$231,596