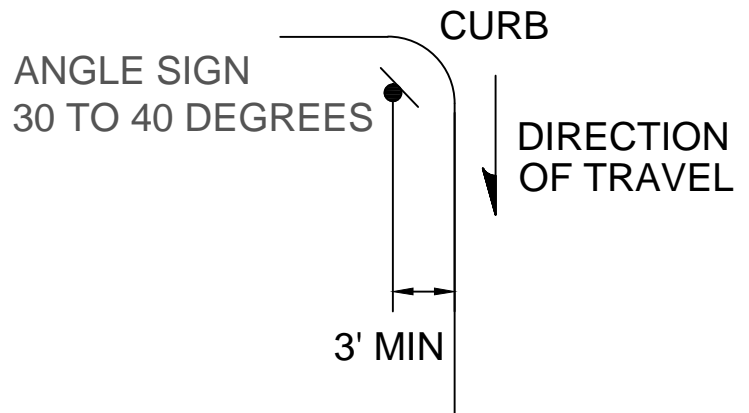
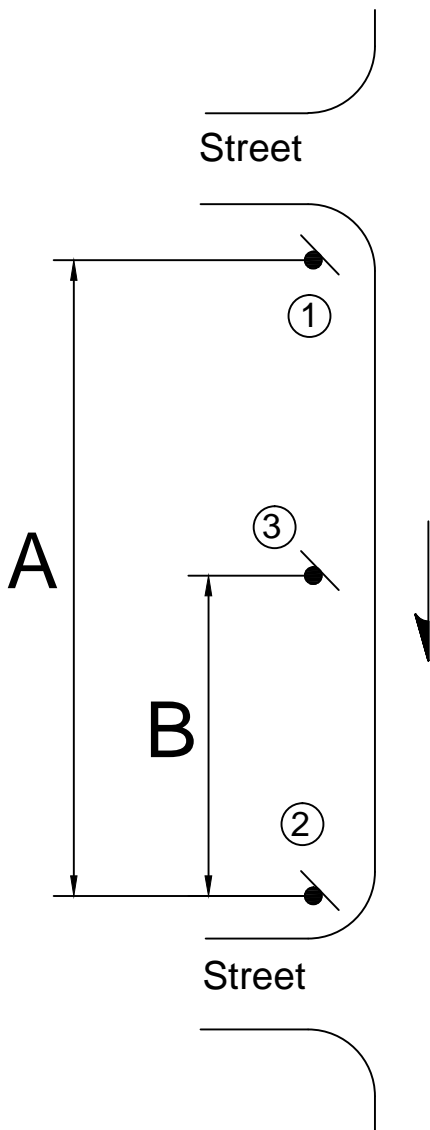
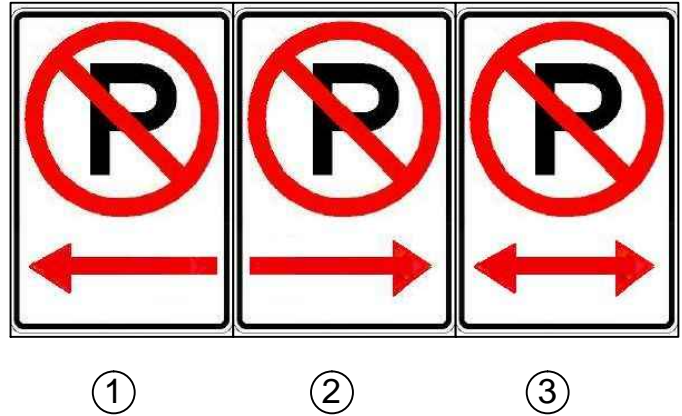


SIGN ① STARTS THE NO PARKING ZONE AND SIGN ② ENDS THE ZONE.

R7-31A



MOUNTING DETAIL

IF A > 400' ADD MID SIGN
 B DISTANCE 200' MIN 500' MAX

DRAWING NUMBER	STD7-14
SCALE	NONE
REVISION DATE	06/10
DEPARTMENT	PW