

LEGEND:

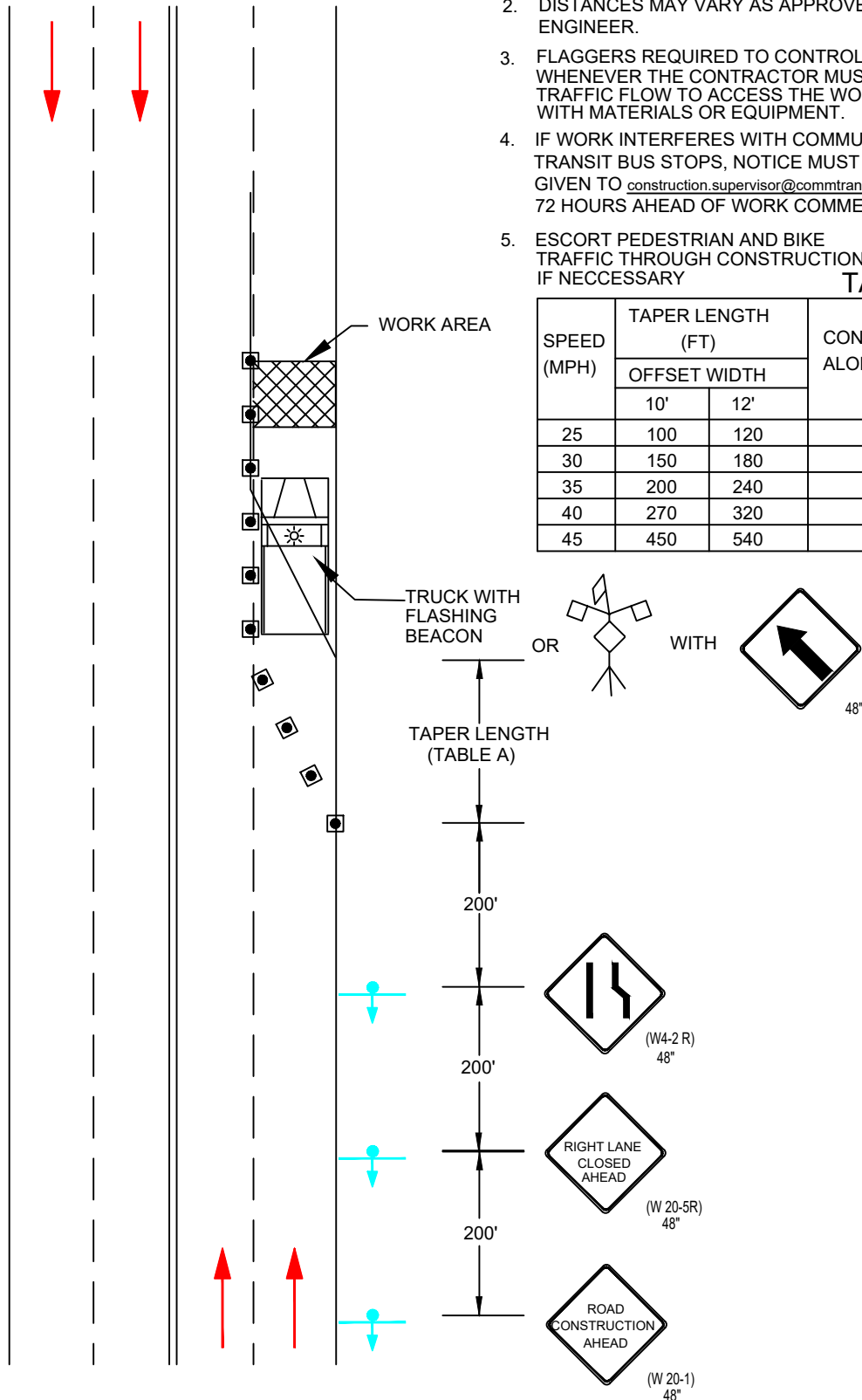
- ◼ CONE OR CHANNELIZING DEVICE (SEE STD 7-13)

NOTE:

1. RETROREFLECTORIZED SIGNS AND FLASHING BEACON SHALL BE INSTALLED AT EACH SIGN FOR NIGHT-TIME USE.
2. DISTANCES MAY VARY AS APPROVED BY THE ENGINEER.
3. FLAGGERS REQUIRED TO CONTROL TRAFFIC WHENEVER THE CONTRACTOR MUST INTERRUPT TRAFFIC FLOW TO ACCESS THE WORK SITE WITH MATERIALS OR EQUIPMENT.
4. IF WORK INTERFERES WITH COMMUNITY TRANSIT BUS STOPS, NOTICE MUST BE GIVEN TO construction.supervisor@commtrans.org 72 HOURS AHEAD OF WORK COMMENCING
5. ESCORT PEDESTRIAN AND BIKE TRAFFIC THROUGH CONSTRUCTION SITE IF NECESSARY

TABLE A

SPEED (MPH)	TAPER LENGTH (FT)		CONE SPACING ALONG TAPER (FT)
	OFFSET WIDTH		
	10'	12'	
25	100	120	25
30	150	180	30
35	200	240	35
40	270	320	40
45	450	540	45



DRAWING NUMBER	7-4B
SCALE	NONE
REVISION DATE	11/19
DEPARTMENT	PW