

PHASING - PHASE 1A DEMOLITION AND SITE REMEDIATION

Phase 1A Utility Work

Cut and cap building services for buildings that will be demolished in Phase 1A. Remove existing utilities within demo footprint except utilities that are needed to serve buildings that are to remain.

Site Remediation

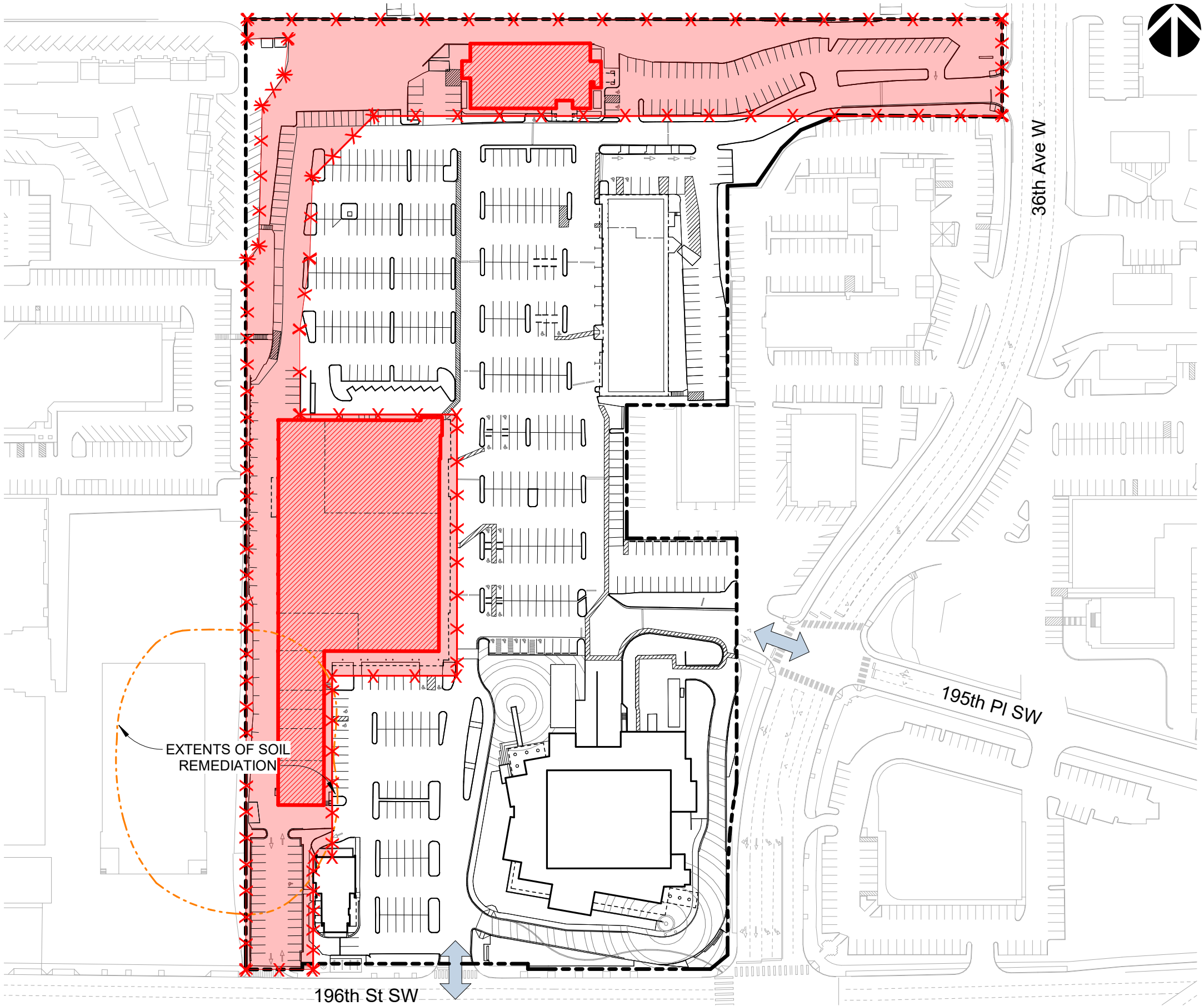
District to perform remedial actions in soil abatement area per Draft Clean Up Action Plan.

Demolition

District to demolish building as shown in plan. District will also demolish site within extents of soil remediation area.

City to demolish site within road extents outside of area of soil remediation.

Fire access to be maintained for all active uses during construction.



PHASING - PHASE 1B UTILITIES

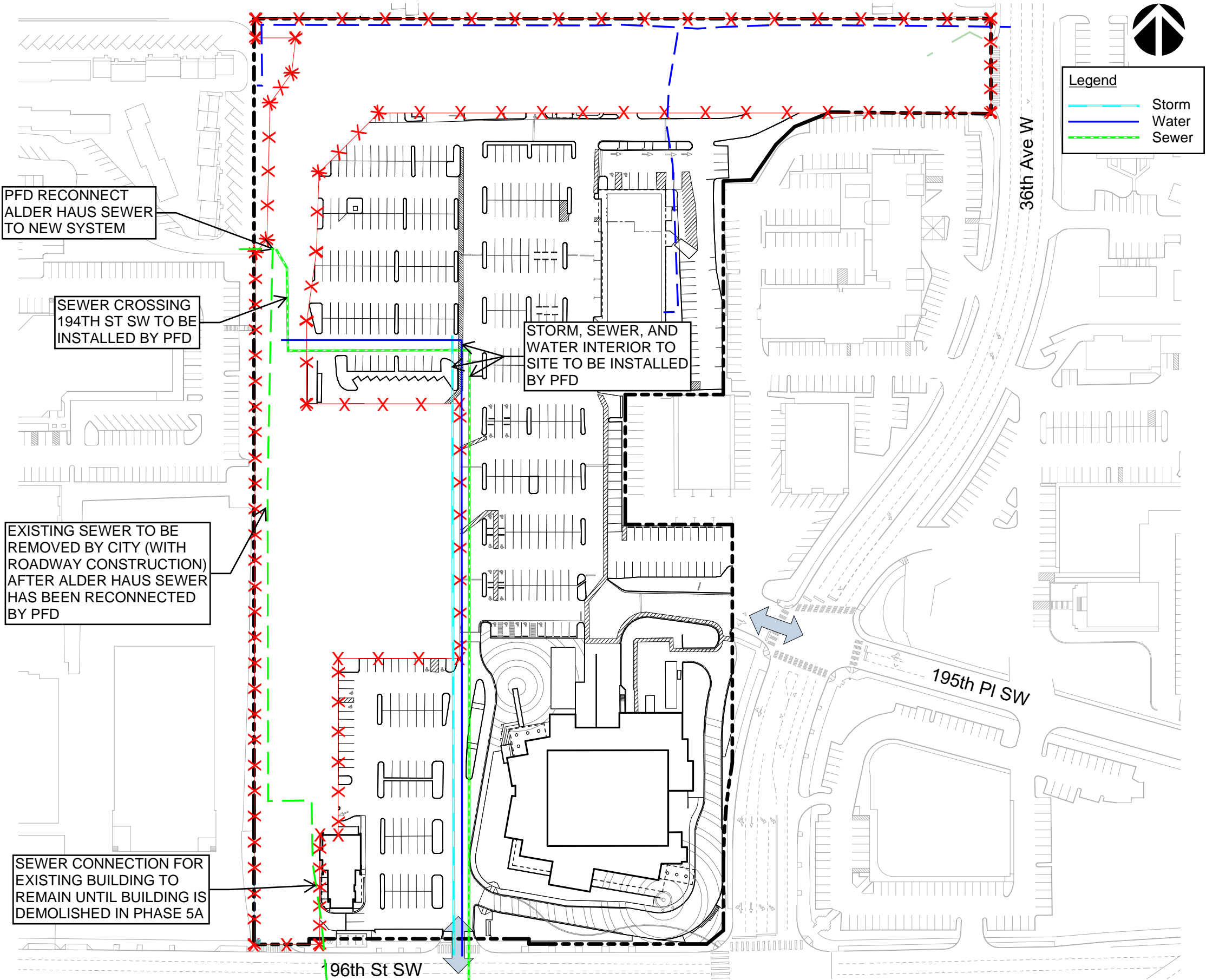
Phase 1B Utility Work

PFD installs new sewer main and connection to Alder Haus side sewer prior to road construction. PFD to install water and storm mains in future 37th Ave W (not needed to support buildings or road construction but may provide efficiencies for construction as utilities are in same alignment as sewer).

City removes existing sewer line within 38th Ave W after new sewer line is installed by PFD.

Utility services for existing buildings on site to be maintained.

Fire access to be maintained for all active uses during construction.



PHASING - PHASE 1C ROAD CONSTRUCTION

Phase 1C Utility Work

City installs 12" water line (and fire hydrants) within 194th St SW and 38th Ave W.

City to reconnect Post Office Building water service to new 12" water line. Water service for this building is currently fed from the existing water main at the north side of the site.

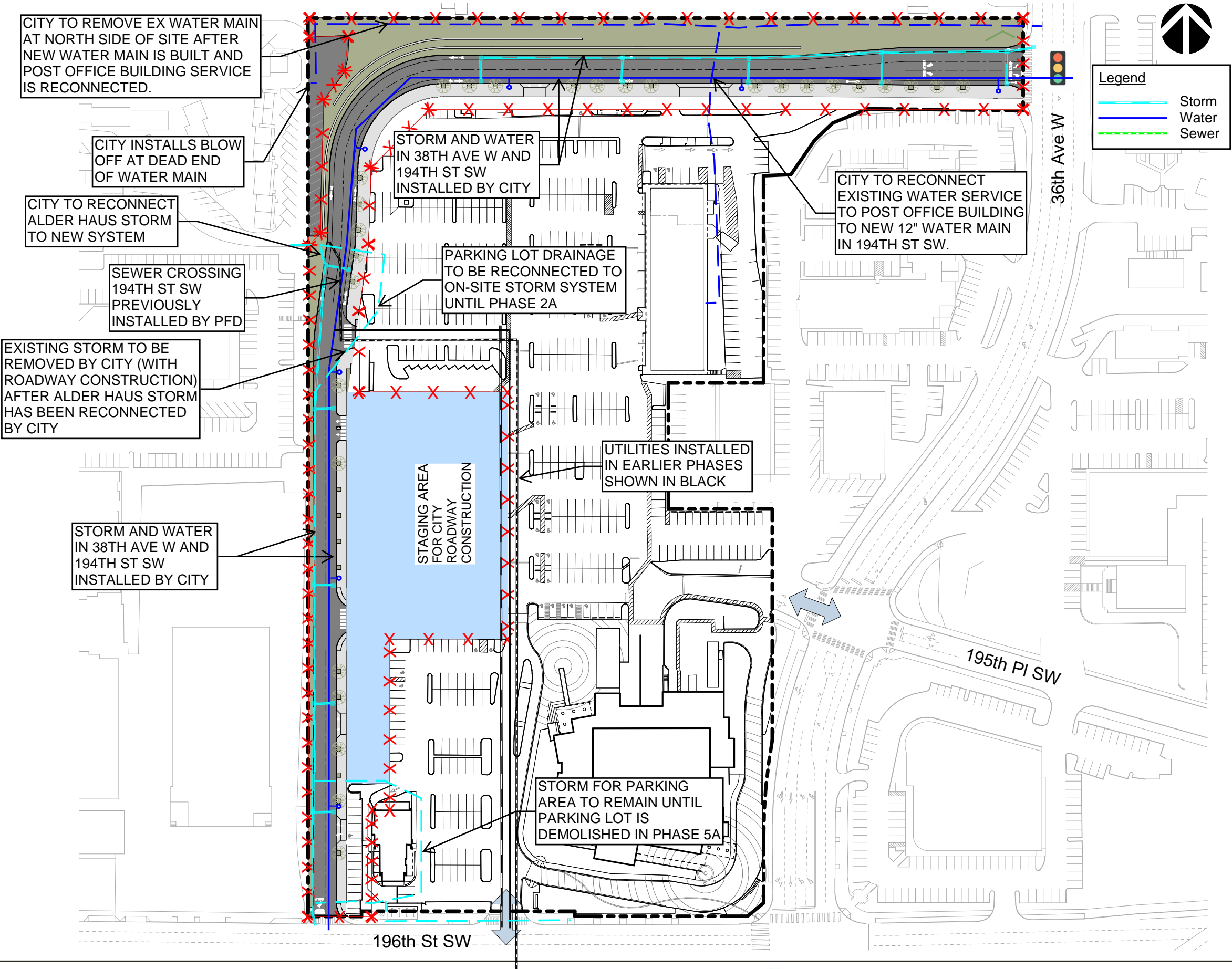
City can abandon and/or remove water line at north side of site and installs blow-off at new dead end.

City installs storm infrastructure in 194th St SW and 38th Ave W including picking up stormwater connection from Alder Haus property. Storm infrastructure to include surface drainage and required detention, water quality to meet Stormwater code requirements.

City to remove existing stormwater infrastucture within new roadway extents after Alder Haus property stormwater line has been reconnected by City.

Utility services for existing buildings on site to be maintained.

Fire access to be maintained for all active uses during construction.



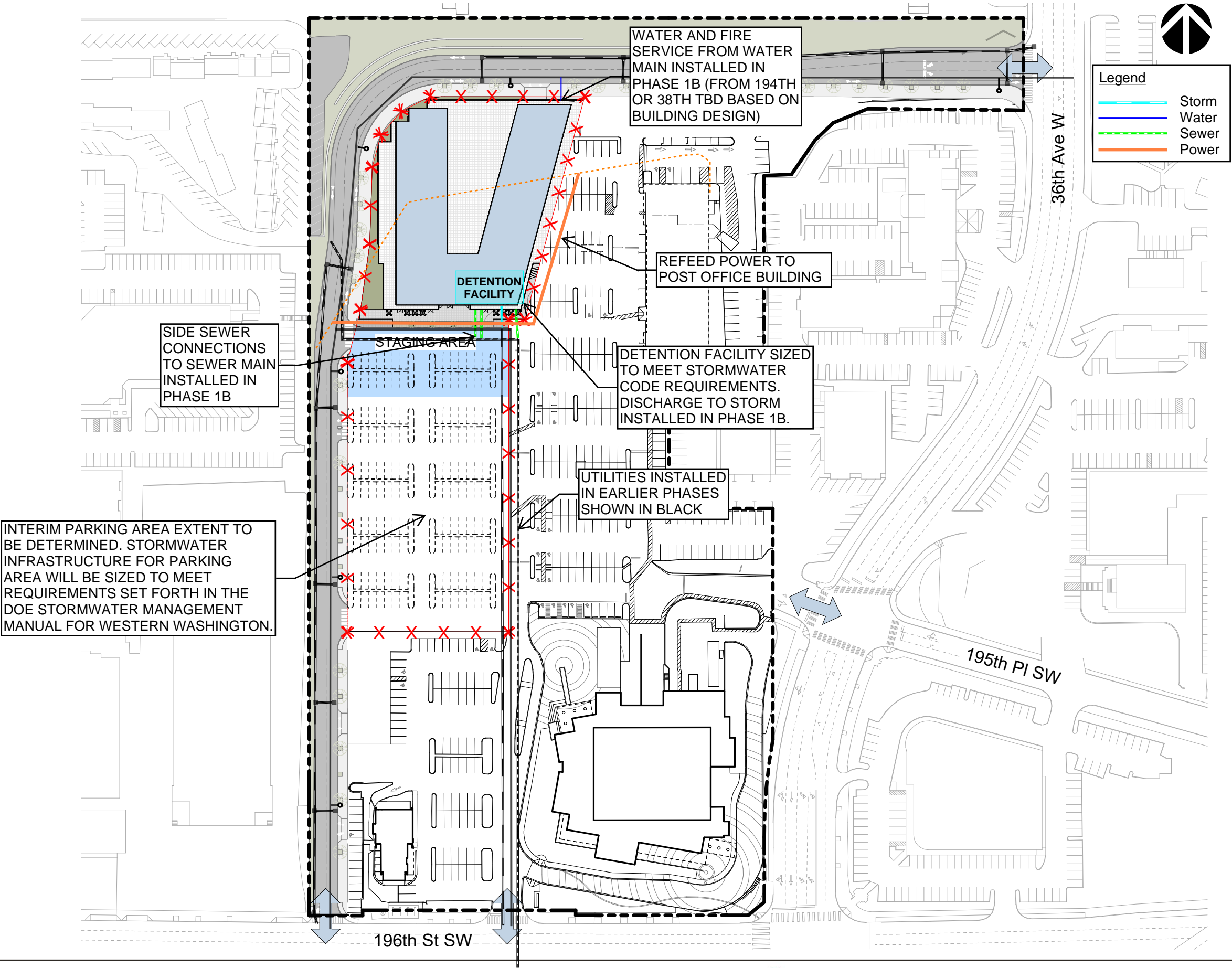
PHASING - PHASE 2A WEST APARTMENT

Phase 2A Utility Work

Relocate electrical service feeding Post Office.

Install utility services for west apartment building.

Fire access to be maintained for all active uses during construction.

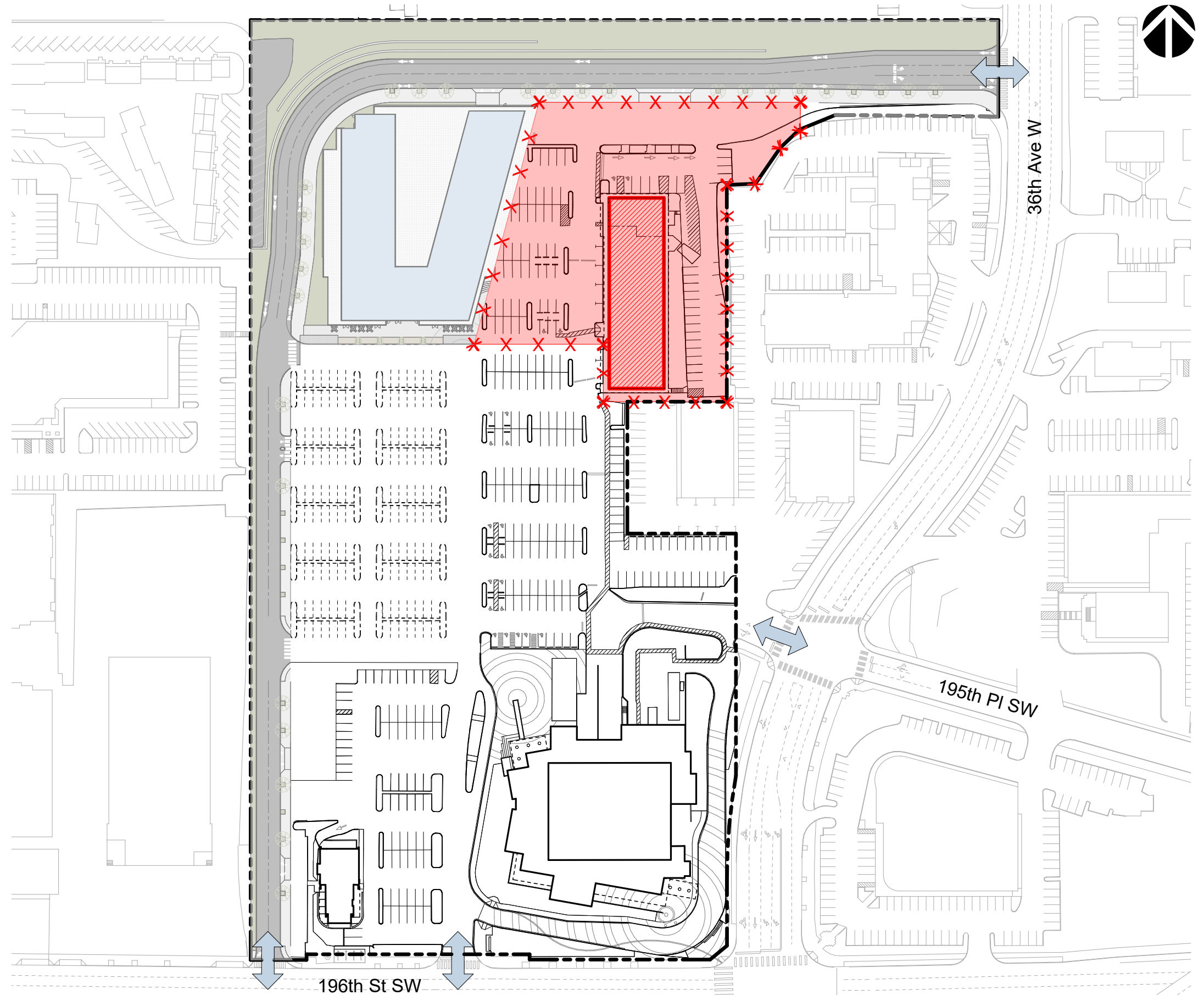


PHASING - PHASE 3A DEMOLITION

Phase 3A Utility Work

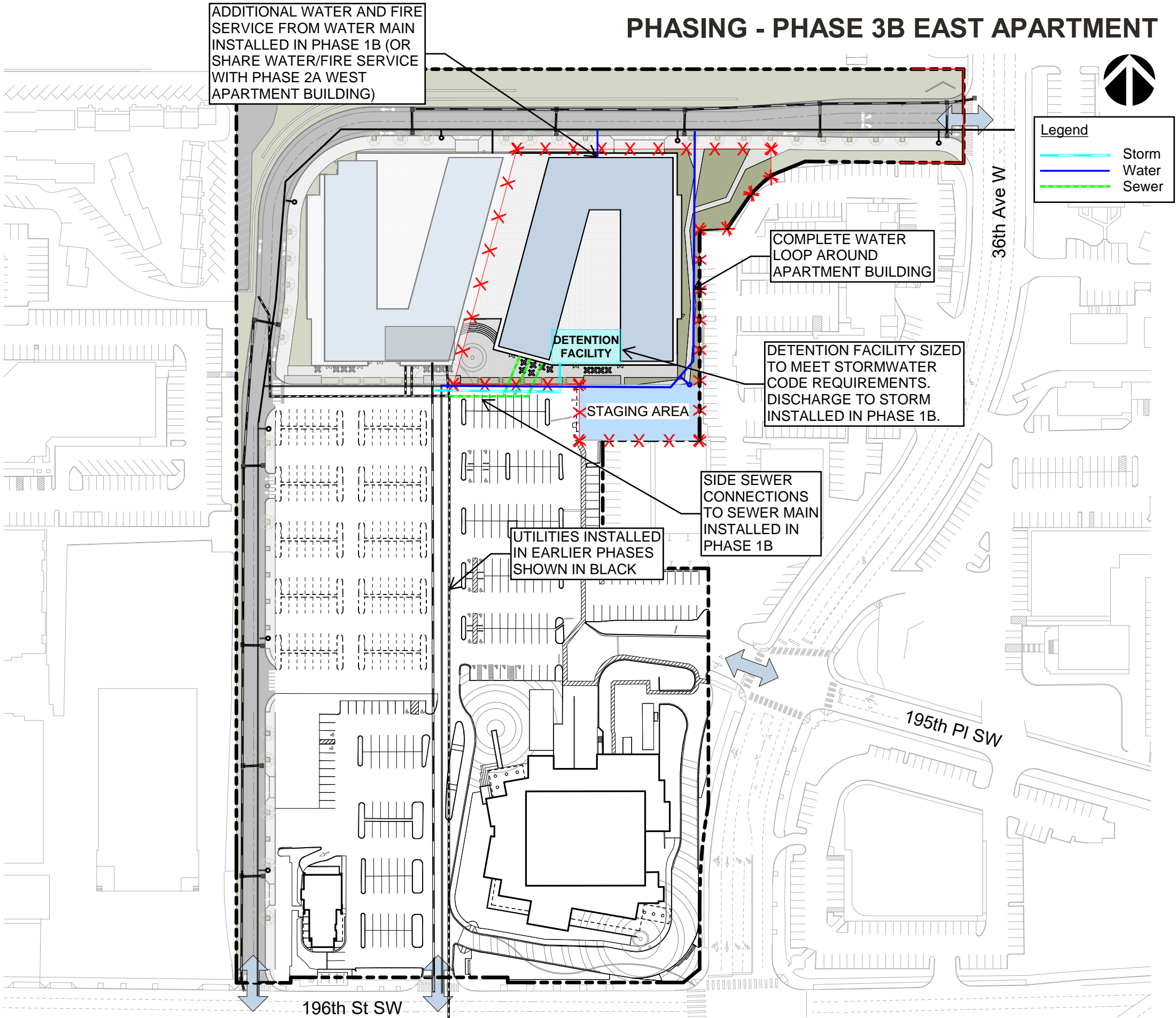
Cut and cap building services for Post Office Building and remove utilities within demo footprint.

Fire access to be maintained for all active uses during construction.



PHASING - PHASE 3B EAST APARTMENT

- Phase 3B Utility Work
- Install utility services for east apartment building.
- Complete water loop around west side of apartment building.
- Fire access to be maintained for all active uses during construction.



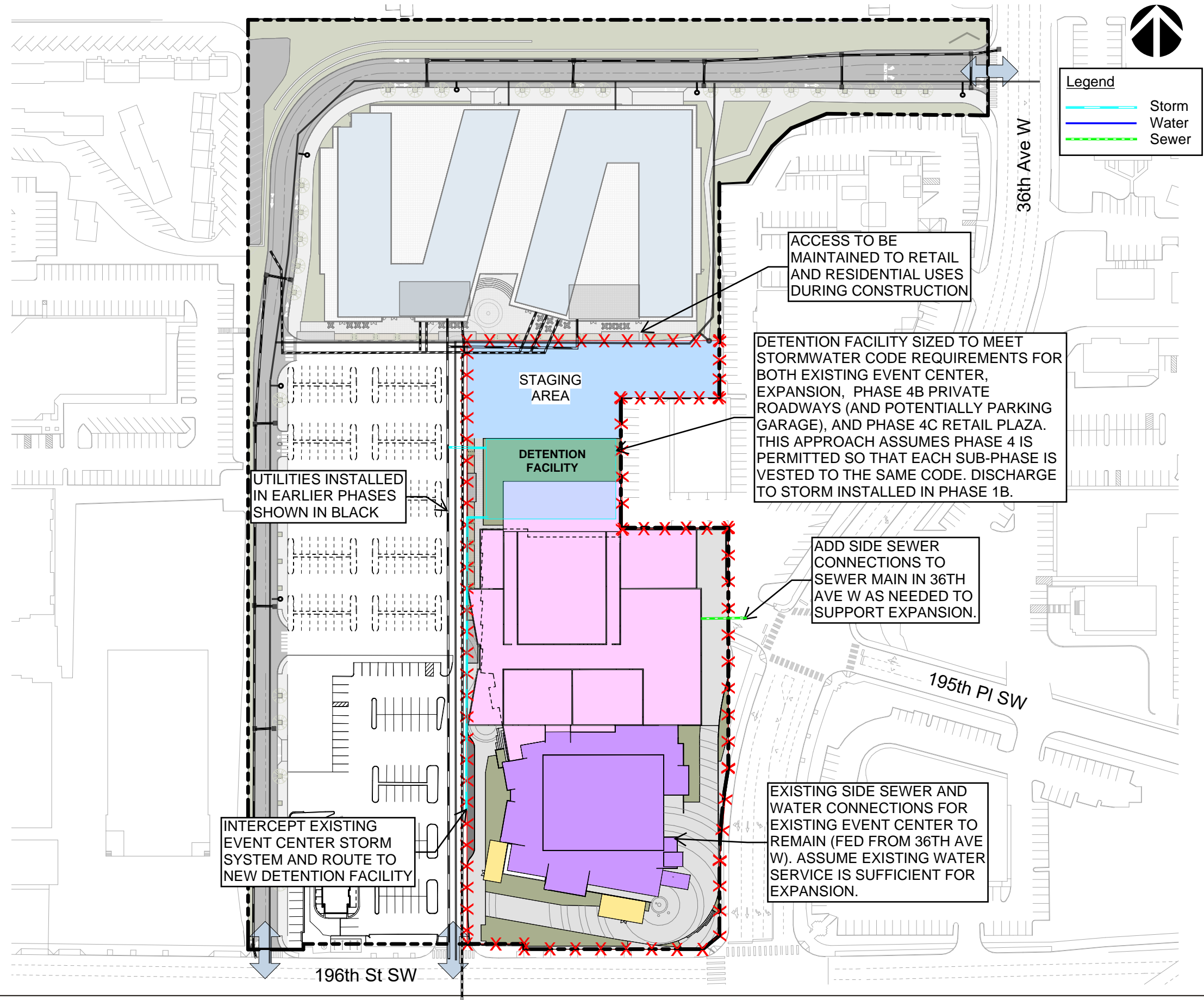
PHASING - PHASE 4A EVENT CENTER

Phase 4A Utility Work

Install utility services for Event Center Expansion.

Disconnect existing Event Center storm system from existing infiltration system and connect to new detention system installed for Event Center and Expansion.

Fire access to be maintained for all active uses during construction.



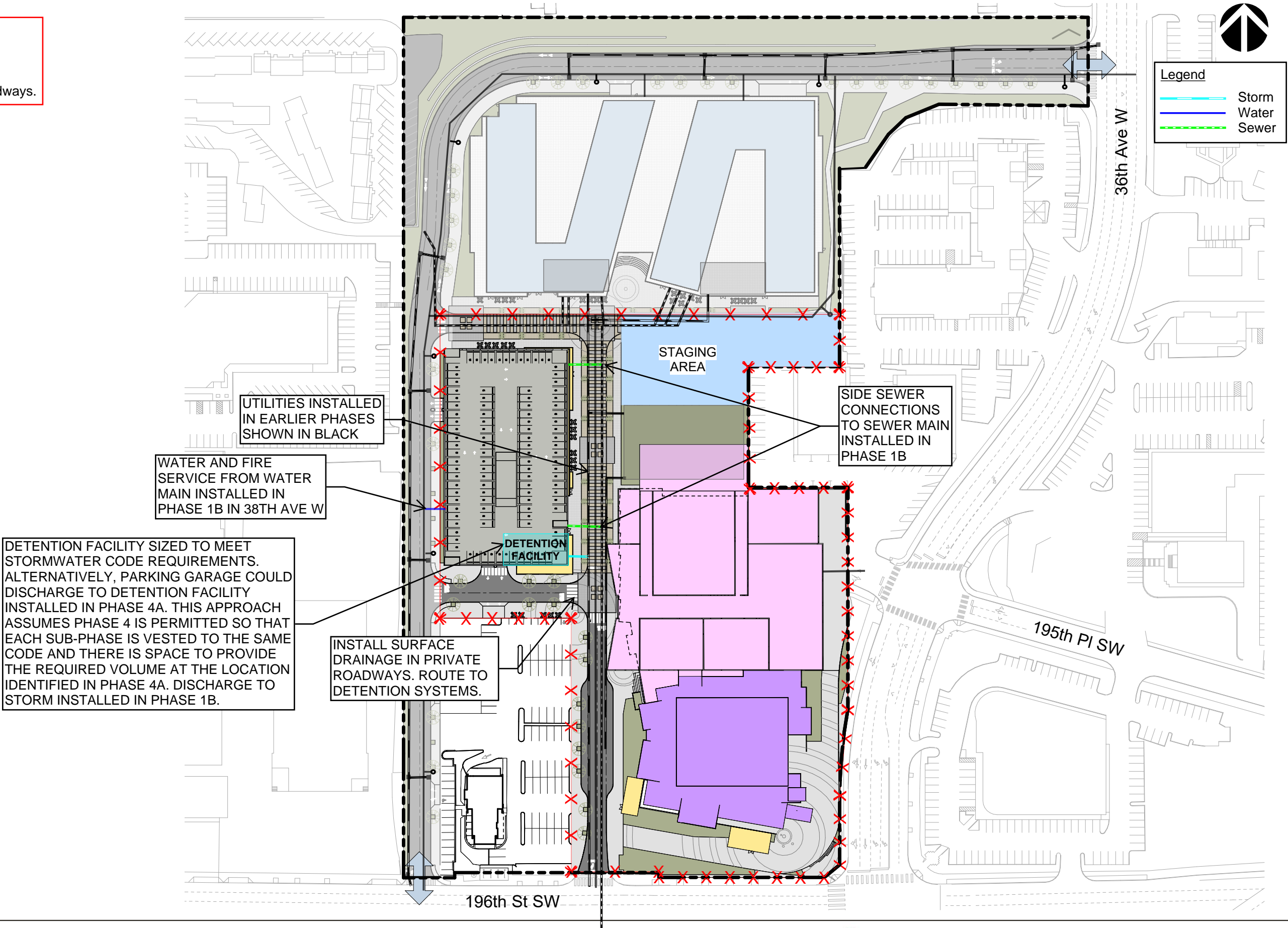
PHASING - PHASE 4B PARKING GARAGE

Phase 4B Utility Work

Install utility services for Parking Garage.

Install storm drain system for private roadways.

Fire access to be maintained for all active uses during construction.

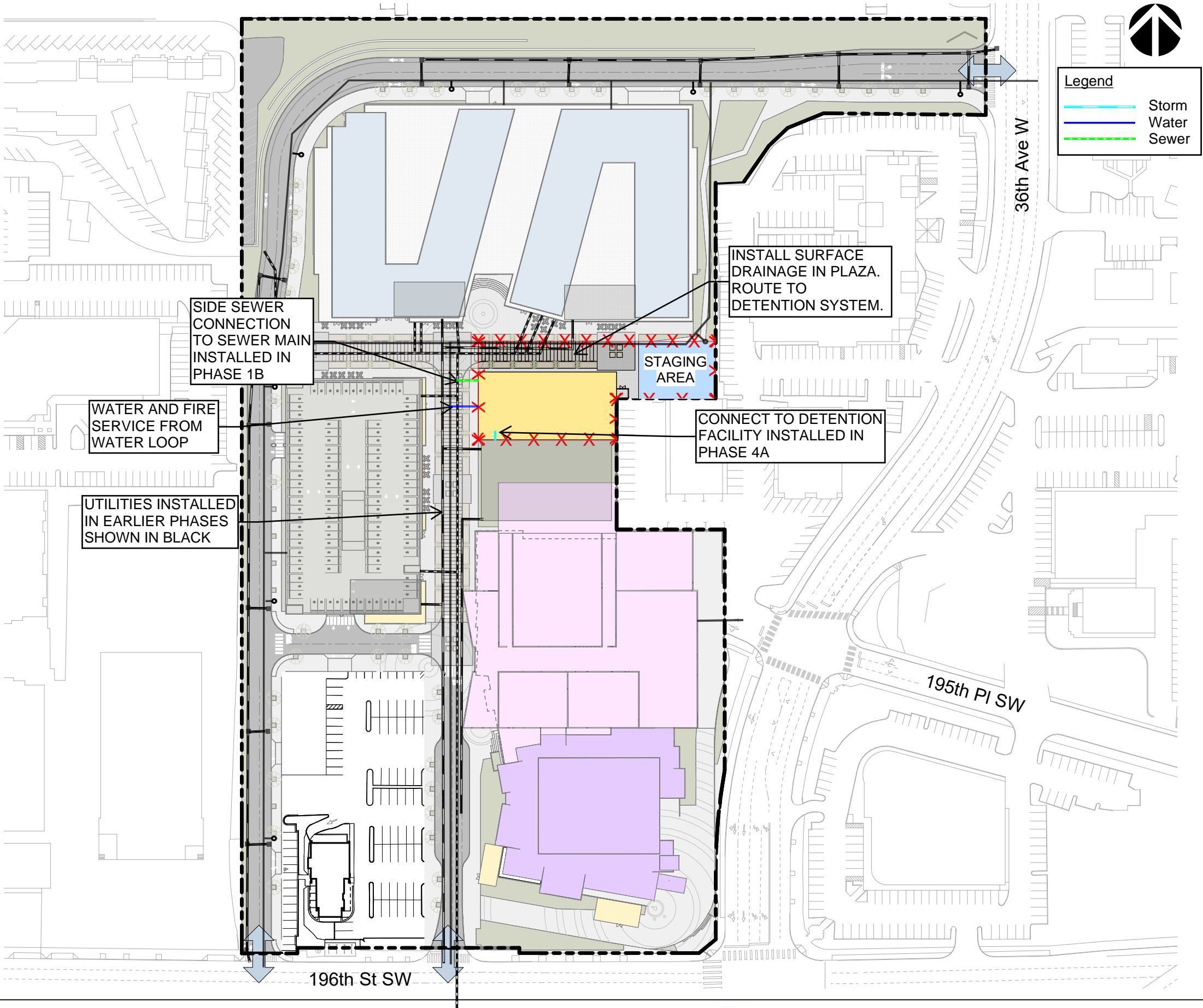


PHASING - PHASE 4C RETAIL PLAZA

Phase 4C Utility Work

Install utility services and storm drain system for Retail Building.

Fire access to be maintained for all active uses during construction.



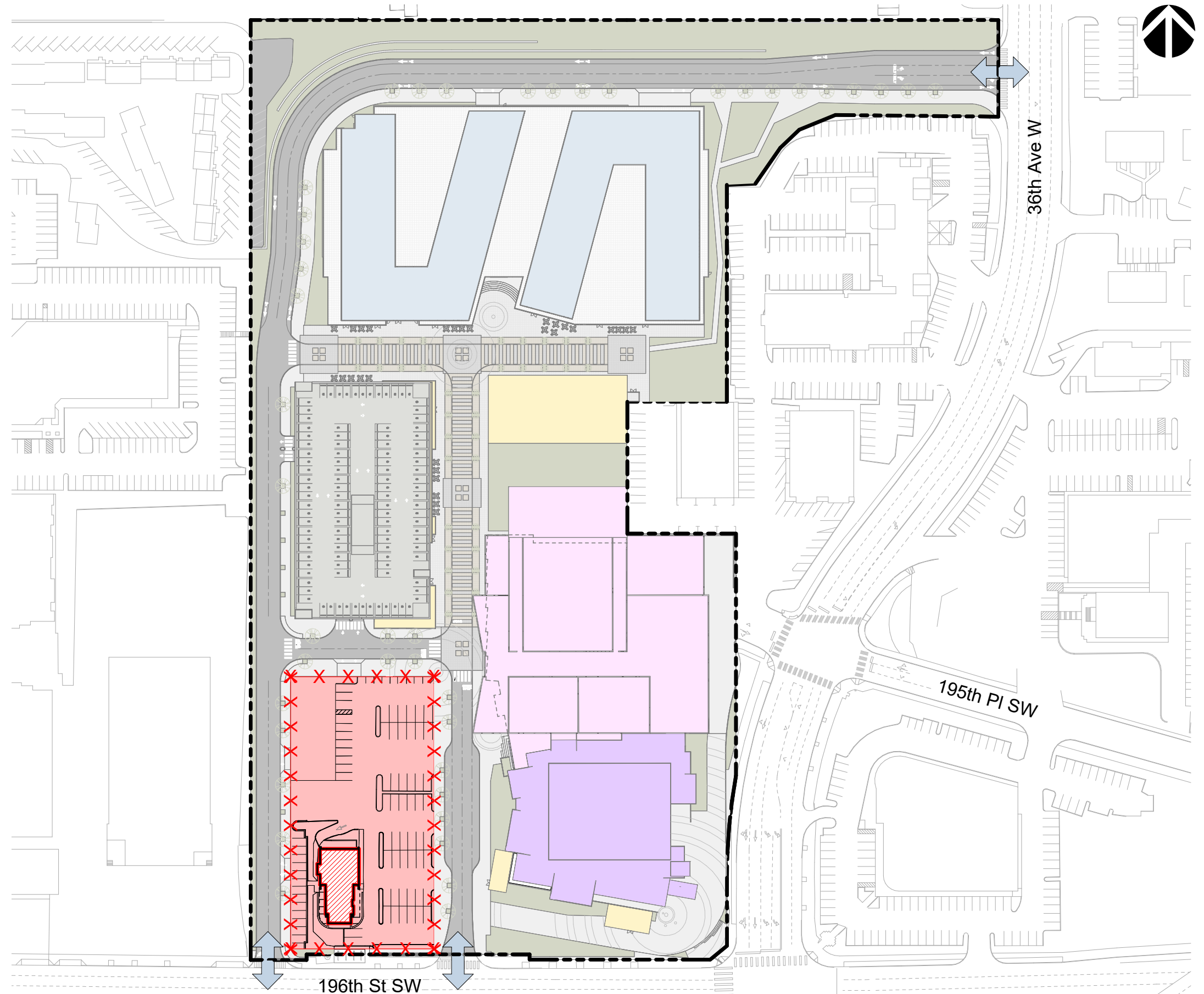
PHASING - PHASE 5A DEMOLITION

Phase 5A Utility Work

Remove utilities within demo footprint.

Remove existing infiltration facility.
Event Center previously reconnected
to new storm system in Phase 4A.

Fire access to be maintained for all
active uses during construction.



PHASING - PHASE 5B HOTEL

Phase 5B Utility Work

Install utility services and storm drain system for Hotel.

Off-site staging area to be determined for Hotel construction.

Fire access to be maintained for all active uses during construction.

