



2024 Comprehensive Plan Update

Planning Commission

January 27, 2021

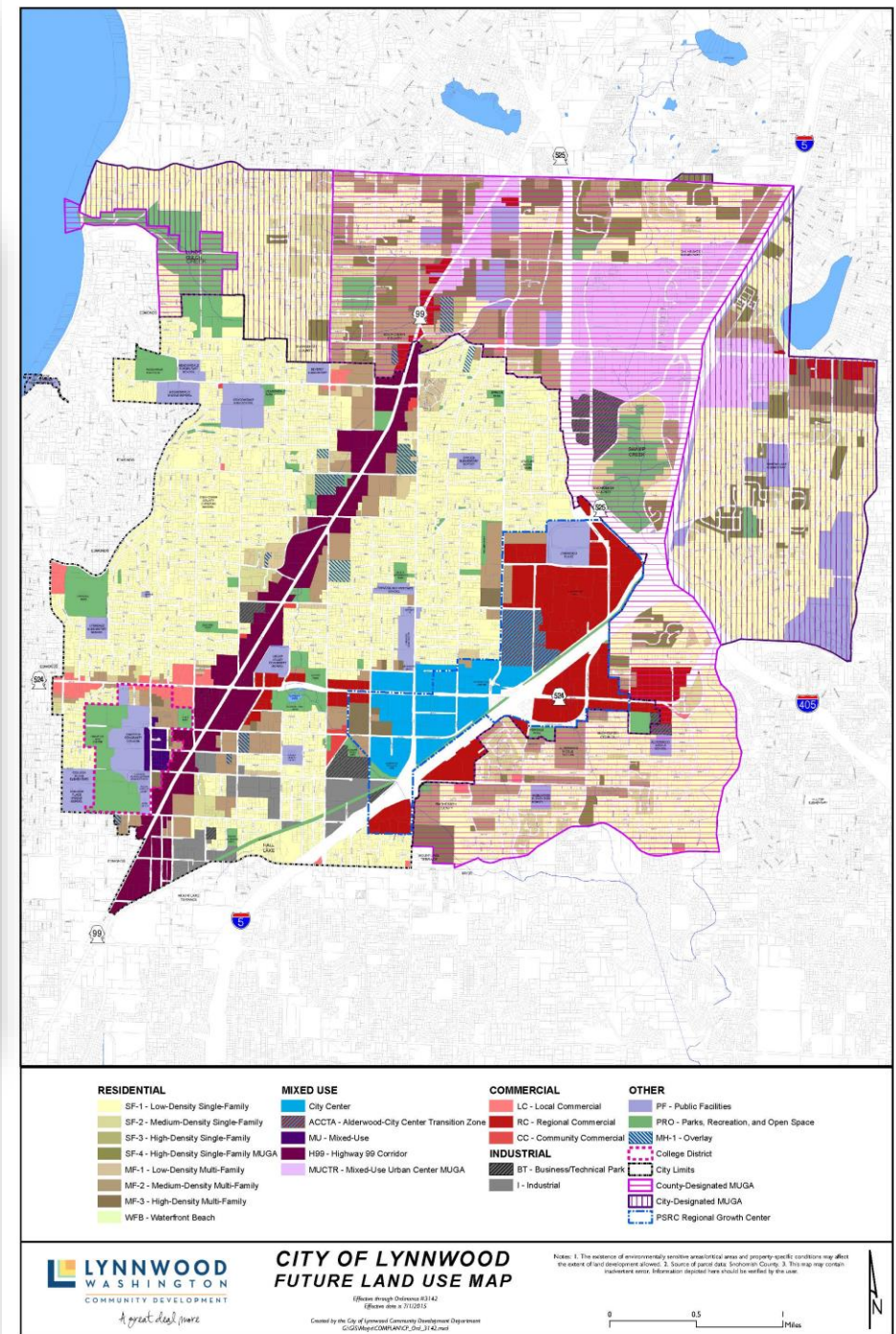
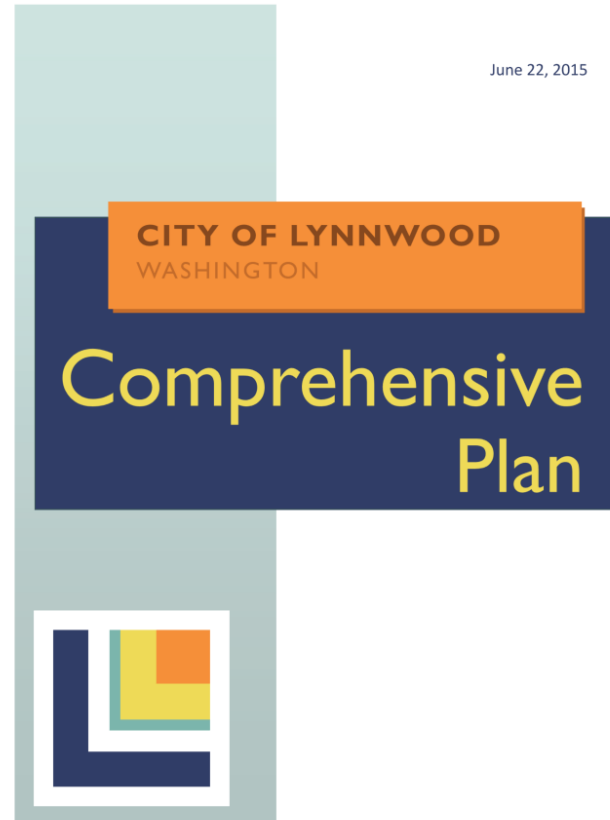
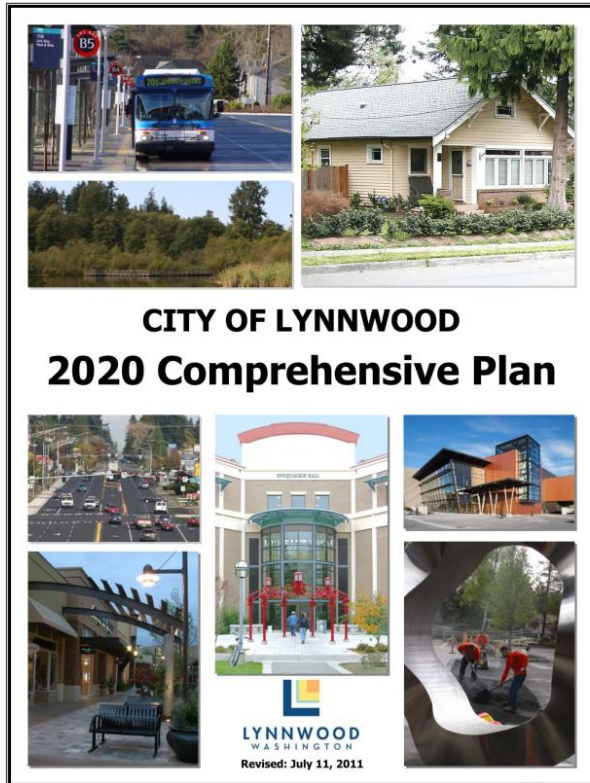
Ashley Winchell, AICP, Community Planning Manager

Why do we plan?

- Communities plan to:
 - Enhance Public Decision-Making
 - Coordinate Community Investments
 - Promote the Public Interest
 - Mitigate Negative Impacts
 - Improve Community Outcomes



What is a Comprehensive Plan?



Planning in Washington State

- Growth Management Act (GMA):
 - Adopted by Washington State Legislature in 1990
 - Address uncoordinated development and urban sprawl
 - Manage threats to the quality of life in Washington
 - Require local planning, guided by state law, and regionally enforced



Growth Management Act (GMA) Goals

1. Encourage compact urban growth
2. Reduce sprawl
3. Encourage coordinated, multimodal transportation
4. Encourage affordable housing
5. Encourage economic development
6. Protect property rights
7. Predictable permitting
8. Maintain natural resource industries
9. Retain open space, enhance recreation
10. Protect the environment
11. Encourage participation
12. Ensure availability of public facilities and services
13. Encourage historic preservation
14. Manage shoreline development



Framework

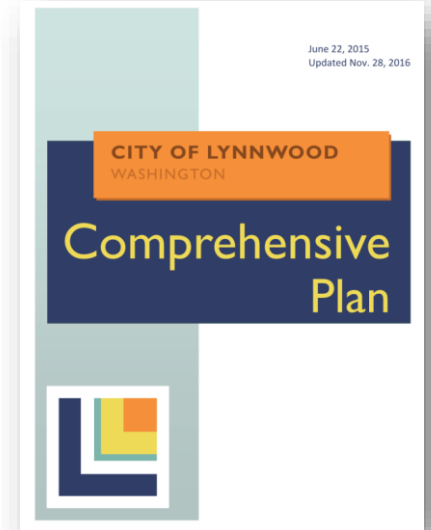
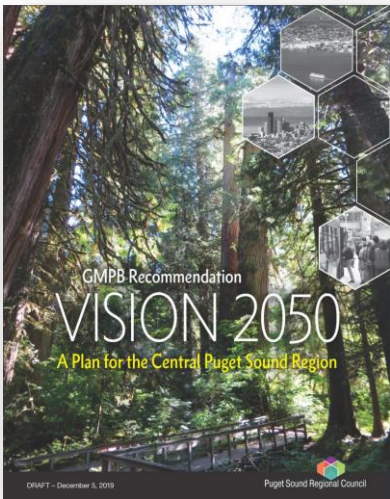
Growth Management Act (GMA)

Multicounty Planning Policies (MPPs)

Countywide Planning Policies

Lynnwood
Comprehensive Plan

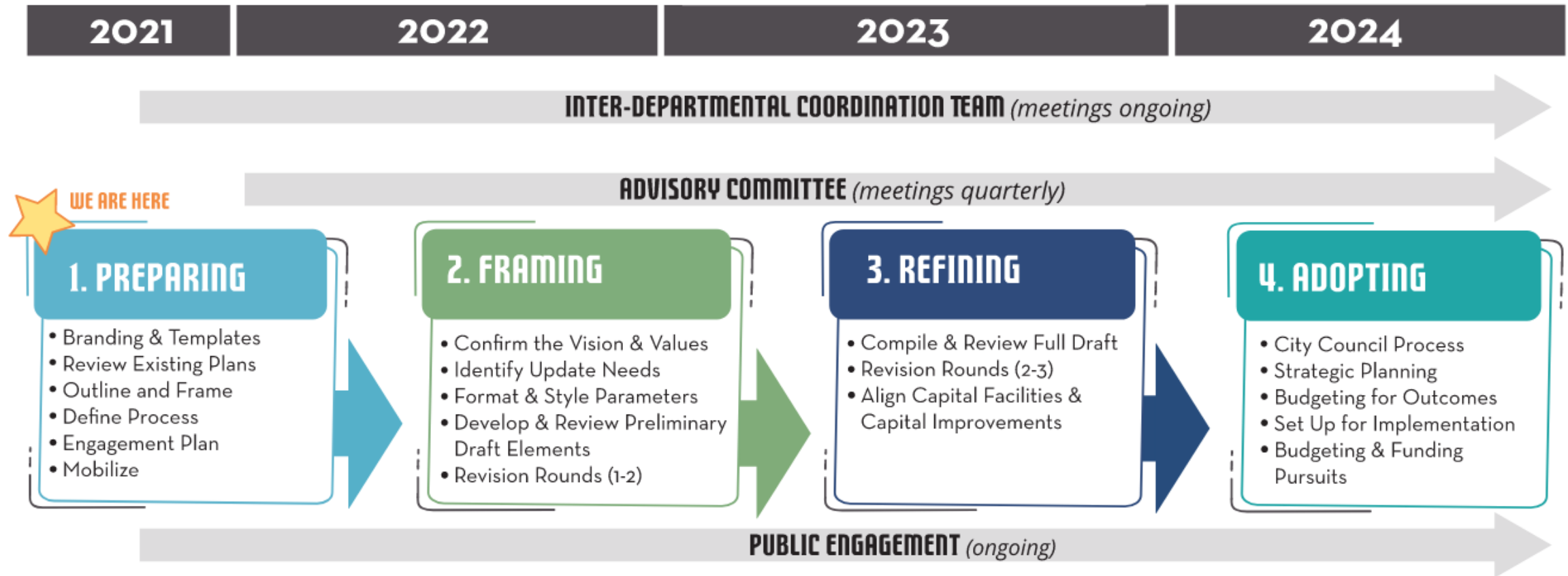
Lynnwood
Municipal Code
Projects



2024 Comprehensive Plan Update



Update Process & Schedule



Adoption required by June 2024



Best Practices – Common Pitfalls

Perception

Document Length

Document Detail

Jargon and Technical Terminology

Document Organization

Lacking Implementation

Lacking Community Relevance



Best Practices - Content

Who are we?

Who do we need to be?

Why are we planning?

How does this fit into past planning efforts?

How was the public involved?

What is the Vision?

What are we going to do?

How are we going to do it?



2044 Growth Allocations

POPULATION					
	2010 Census	2020 Census	Capacity to 2035	2044 allocation	Additional Population Capacity Needed
Lynwood City	35,840	38,568	56,041	63,735	7,694
Lynnwood MUGA	27,147	35,652	48,362	53,433	5,071

EMPLOYMENT					
	2011	2019	Capacity to 2035	2044 allocation	Additional Employment Capacity Needed
Lynwood City	24,266	28,628	42,537	50,540	8,003
Lynnwood MUGA	3,574	5,067	7,609	8,009	400



Summary of Review - Review Criteria



Legal & Policy Framework

- Dept. of Commerce Guidance
- Puget Sound Regional Council Vision 2050
- Snohomish County Countywide Planning Policies



Language & Construction

- Clear and Simple Word Choice
- Implementable
- Avoids Common Pitfalls (see Common Issues Slide)



Emerging Planning Issues

- Equity
- Sustainability
- Climate Change
- Public Health
- Physical Resilience
- Social Resilience



Engagement



- **Community Members** engaged through pop-up events, larger outreach efforts, and other focused opportunities
- Quarterly **Advisory Committee** meetings – residents, business owners and property owners
- Quarterly Briefings to **Planning Commission** – report back on findings from community
- Quarterly Briefings to **City Council** – report back on findings from Community Members, Advisory Committee, and Planning Commission



Engagement



- **Community Members** engaged through pop-up events, larger outreach efforts, and other focused opportunities
- Quarterly **Advisory Committee** meetings – residents, business owners and property owners
- Quarterly Briefings to **Planning Commission** – report back on findings from community
- Quarterly Briefings to **City Council** – report back on findings from Community Members, Advisory Committee, and Planning Commission



What is next?

- February: Engagement Memo
- 2022 Briefings:
 - **Planning Commission**
 - January 27, 2022
 - April 28, 2022
 - August 11, 2022
 - October 28, 2022
 - **City Council**
 - January 7, 2022
 - May 16, 2022
 - September 19, 2022
 - November 7, 2022

