



LYNNWOOD
WASHINGTON

A great deal more

2024 Comprehensive Plan Update

Planning Commission

March 11, 2021

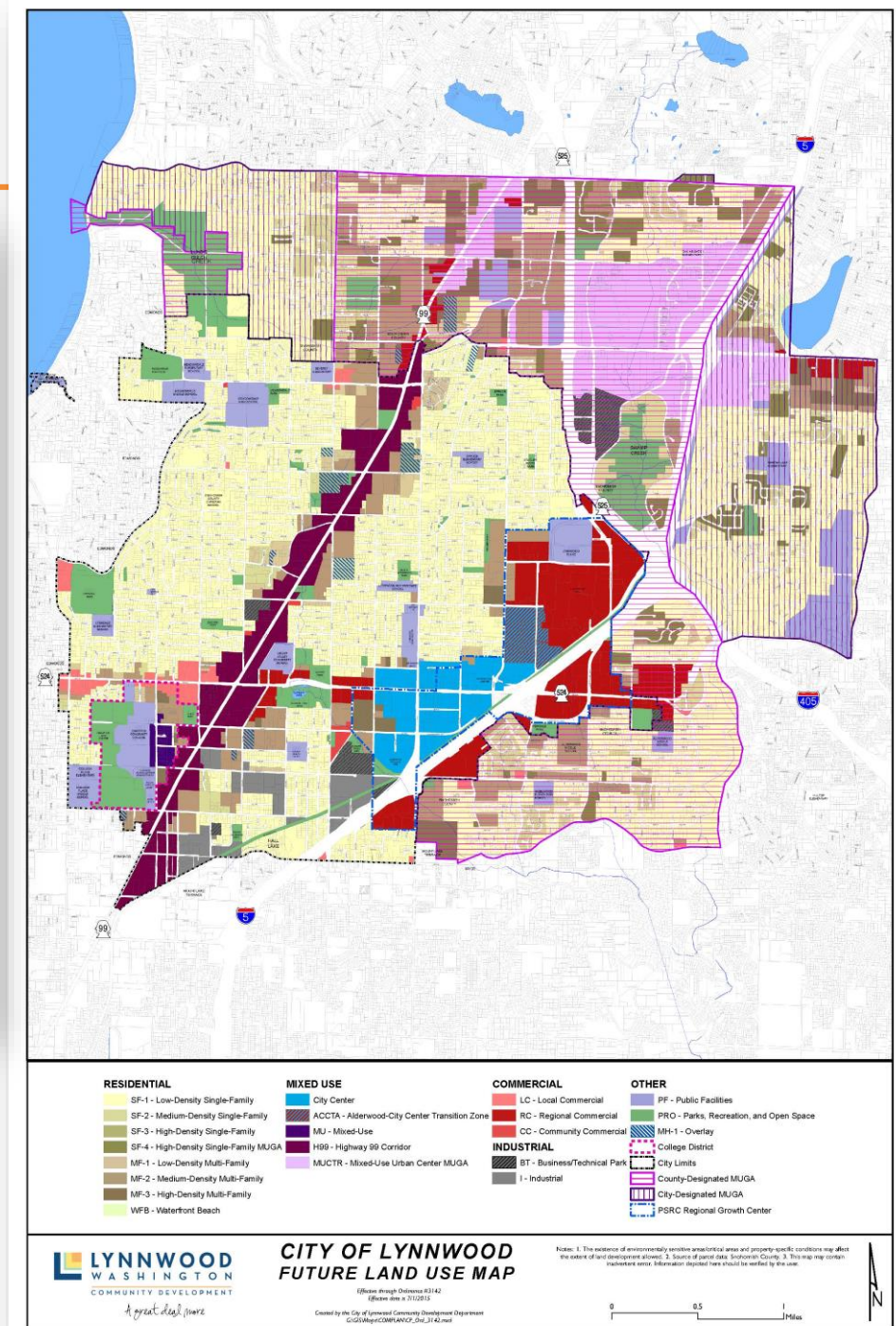
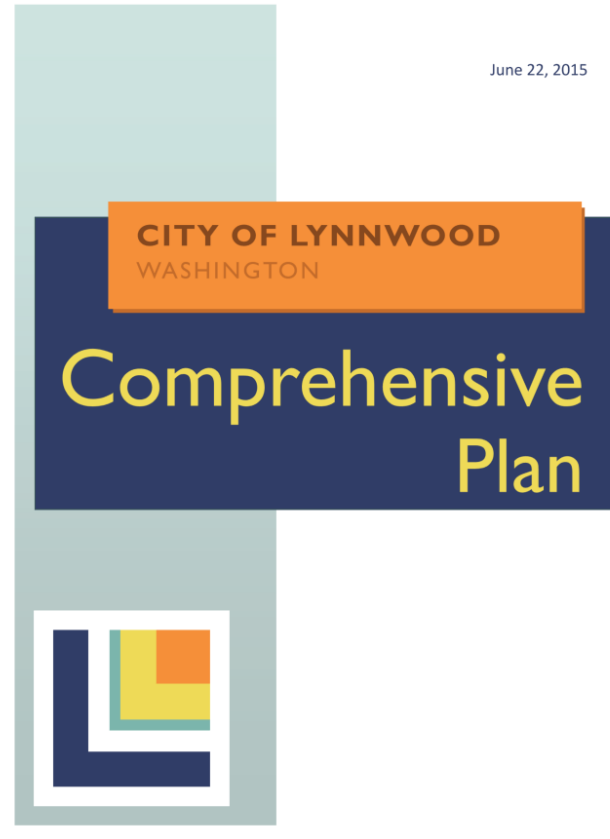
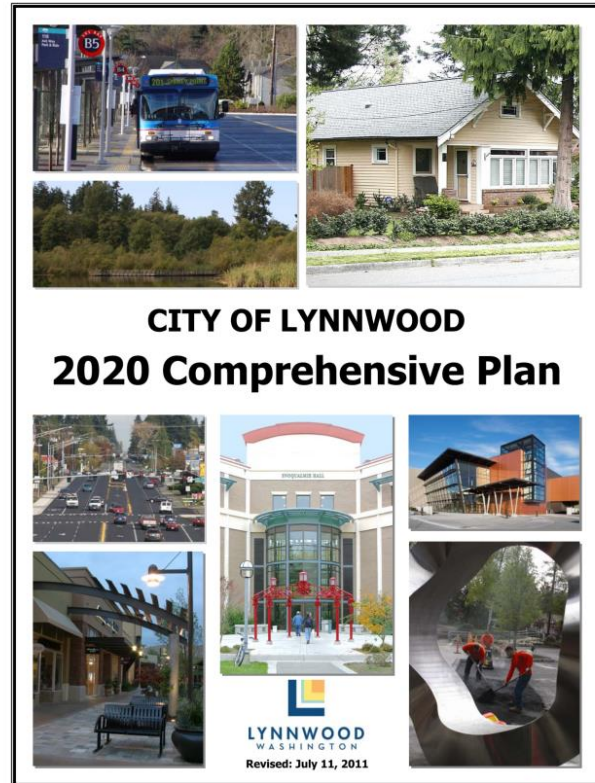
Ashley Winchell, AICP, Community Planning Manager

Why do we plan?

- Communities plan because it:
 - Enhances Public Decision-Making
 - Coordinates Community Investments
 - Promotes the Public Interest
 - Mitigates Negative Impacts
 - Improves Community Outcomes



What is a Comprehensive Plan?



Planning in Washington State

- Growth Management Act (1990)
 - Address uncoordinated development and urban sprawl
 - Manage threats to the quality of life in Washington
 - Require local planning, guided by state law, and regionally enforced



Growth Management Act (GMA) Goals

1. Encourage compact urban growth
2. Reduce sprawl
3. Encourage coordinated, multimodal transportation
4. Encourage affordable housing
5. Encourage economic development
6. Protect property rights
7. Predictable permitting
8. Maintain natural resource industries
9. Retain open space, enhance recreation
10. Protect the environment
11. Encourage participation
12. Ensure availability of public facilities and services
13. Encourage historic preservation
14. Manage shoreline development



Framework

Growth Management Act (GMA)

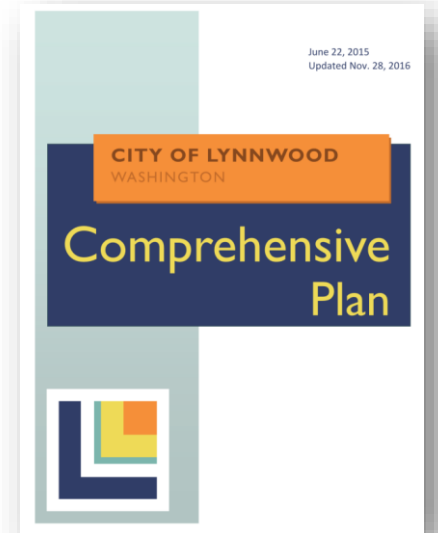
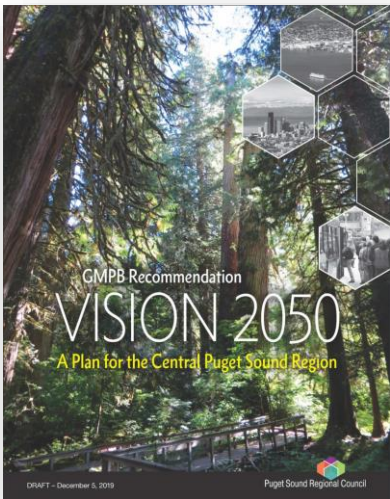
Multicounty Planning Policies (MPPs)

Countywide Planning Policies

Lynnwood
Comprehensive Plan

Regulations

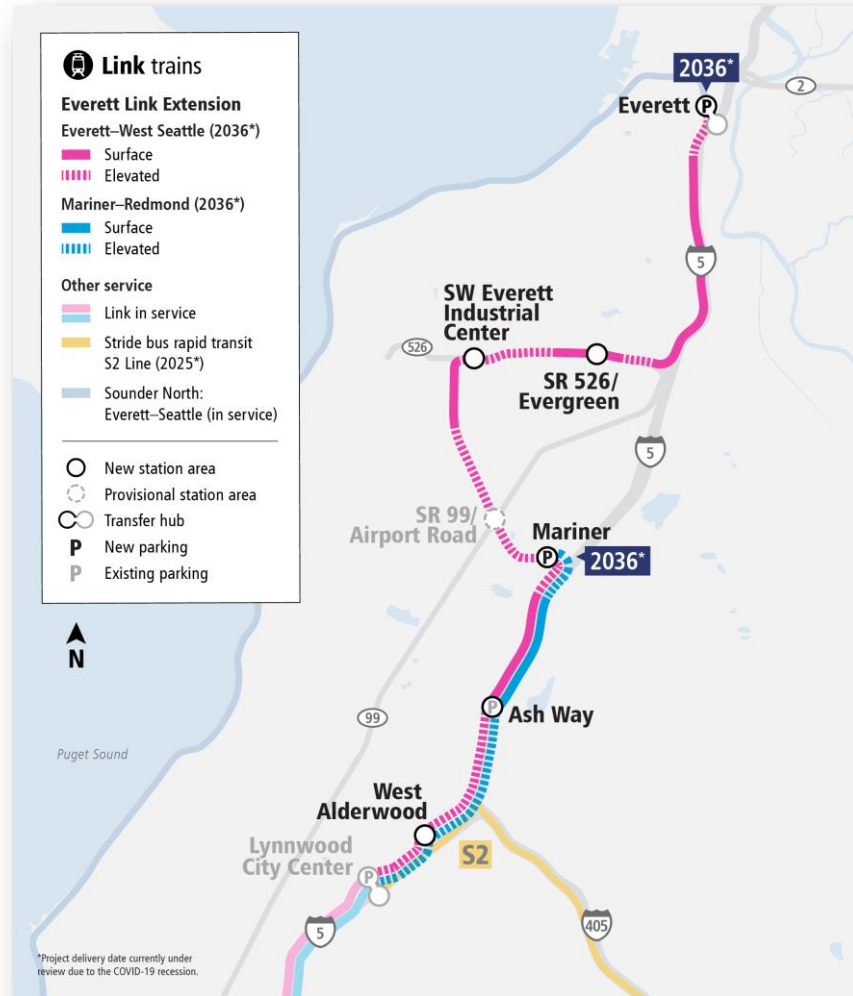
Projects



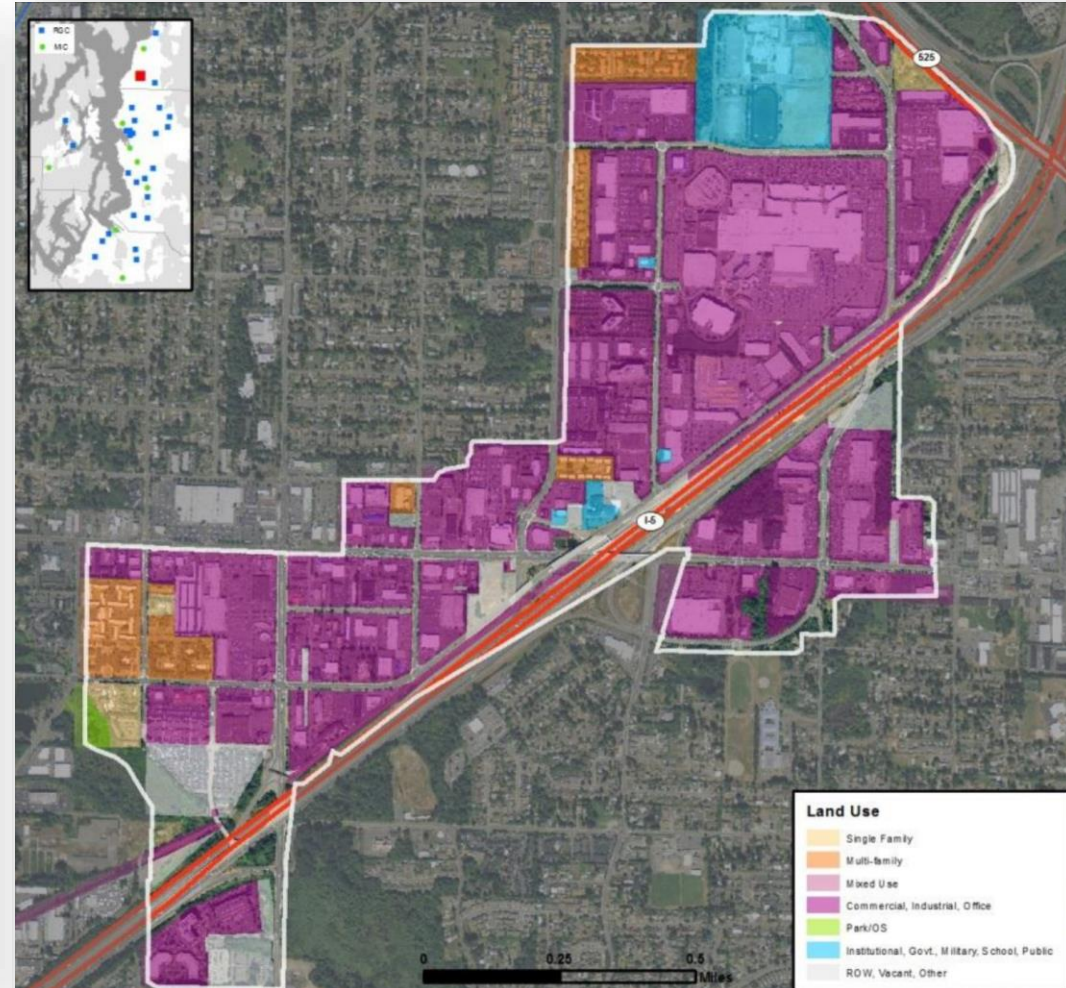
2024 Comprehensive Plan Update



Planning for 2044



Everett Link Extension



Regional Growth Center



2024 Update Themes



Coordination



Race and Social Equity



Quality of Life



Regional Connectivity



Economic Prosperity



Community Engagement



Achievable



User-Friendly



Comprehensive Plan Elements



Land Use



**Community
Character ***



**Economic
Development**



Transportation



**Parks, Recreation
& Open Space**



Housing



Human Services *



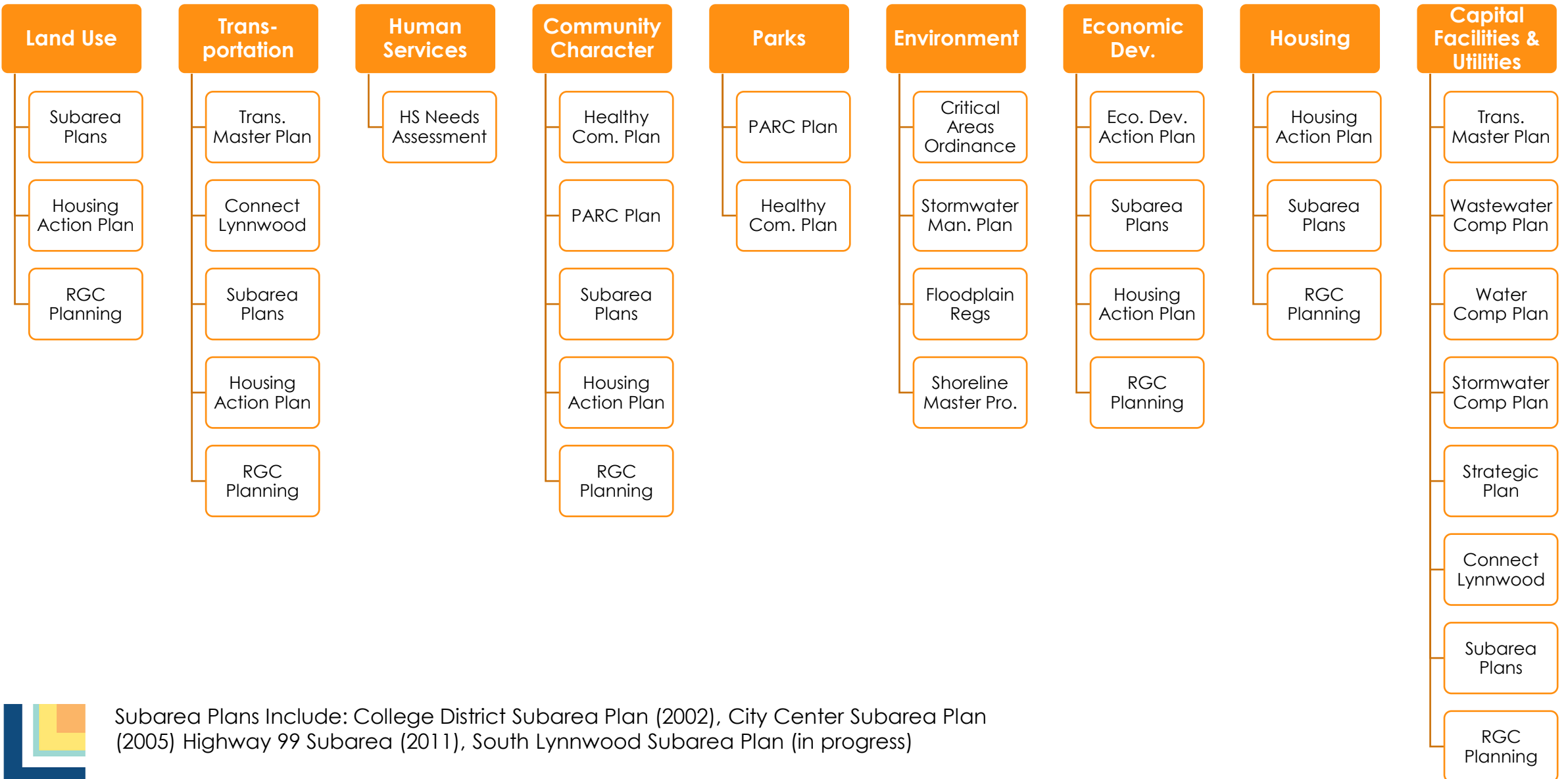
Environment



**Capital Facilities
& Utilities**



Build on Existing Efforts



Audit and Guide



Work Plan



Align Elements



Coordinate Efforts



Engage Community



Inform Decision Makers



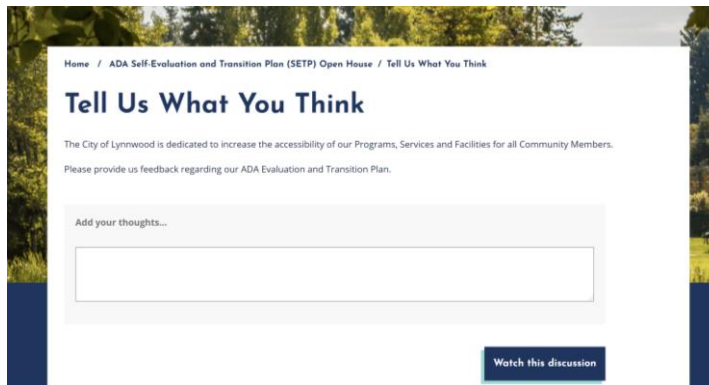
Be Efficient



Deliver



Outreach Plan



What is next for Planning Commission?

- **July 2021:** Lynnwood Comp Plan Audit Presentation
- **November 2021:** Lynnwood Comp Plan Work Plan Presentation
- **January 2022:** Lynnwood Public Engagement & Stakeholder Plan Presentation
- **2022-2023:** Updates on Lynnwood Comp Plan Element Progress
- **Early 2024:** Briefings on Lynnwood Comp Plan in preparation for Adoption
- **June 2024:** Lynnwood Comp Plan Adoption

