

**Topic: 2024 Comprehensive Plan
Update****Staff Report**

- ☐ Public Hearing
- ☒ Work Session
- ☐ Other Business
- ☐ Information
- ☐ Miscellaneous

Staff Contact: Ashley Winchell, AICP, Community Planning Manager
Community Planning Division - Development and Business Services

Summary

This agenda item is to brief the Planning Commission on the 2024 Comprehensive Plan Update. Over the next three years staff within the Community Planning Division of the Development Services Department will be leading an effort to update the Comprehensive Plan. Community Planning staff will be working with all departments of the City to coordinate efforts and over-arching policies for adoption into the plan.

Project Background

The Growth Management Act (GMA) requires all jurisdictions within Pierce, King, and Snohomish Counties update their comprehensive plans and development regulations by June 30, 2024, and every eight years thereafter [RCW 36.70A.130(5)]. The State of Washington requires these periodic updates to ensure local governments' plans and regulations remain consistent with the Growth Management Act (GMA).

The horizon year for the upcoming comprehensive plan update is 2044. In 2044 Lynnwood is projected to have approximately 65,000 residents within the existing city boundaries. The ST2 extension will have been running for 20 years. The ST3 station will have been open and running for approximately 8 years. Lynnwood will be better connected than ever to both Everett and Seattle.

To plan for 2044, the comprehensive plan will need to consider a wide variety of important values and issues. These considerations include embedding race and social equity into the planning process and plan content; strengthening and preserving a strong sense of community in the face of changes; responding to its new role as a regional transit hub connecting King and Snohomish counties more thoroughly than ever before; improving the quality of life for its residents; and considering community resilience as a core value in responding to disruptive regional, national, or global events such as the COVID-19 pandemic. The updated comprehensive plan will address these values and issues in a cohesive, accessible document that expresses continuity in community vision, goals, policies, strategies, and implementation actions.

Next Steps

A series of presentations will be provided throughout the progress of the plan to keep Planning Commission up-to-date and to solicit valuable policy direction.

Attachments:

- 2024 Comprehensive Plan Update PowerPoint



LYNNWOOD
WASHINGTON

A great deal more

2024 Comprehensive Plan Update

Planning Commission

March 11, 2021

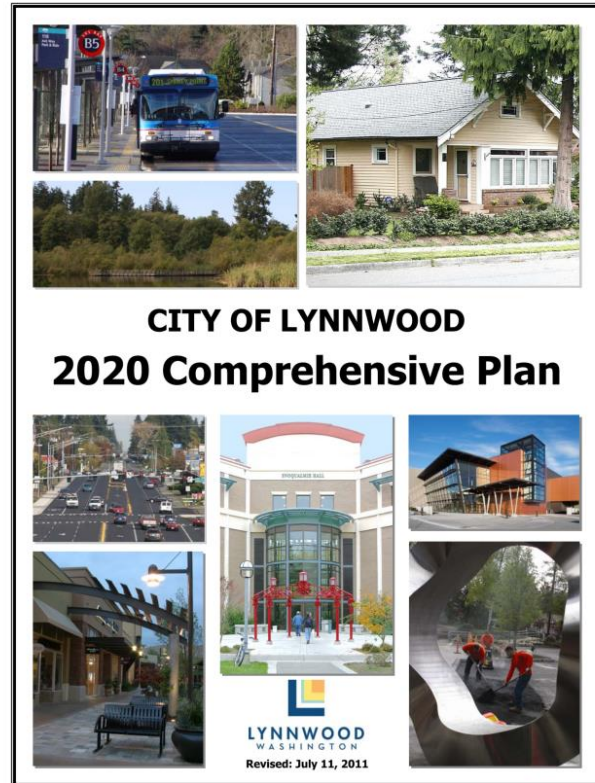
Ashley Winchell, AICP, Community Planning Manager

Why do we plan?

- Communities plan because it:
 - Enhances Public Decision-Making
 - Coordinates Community Investments
 - Promotes the Public Interest
 - Mitigates Negative Impacts
 - Improves Community Outcomes



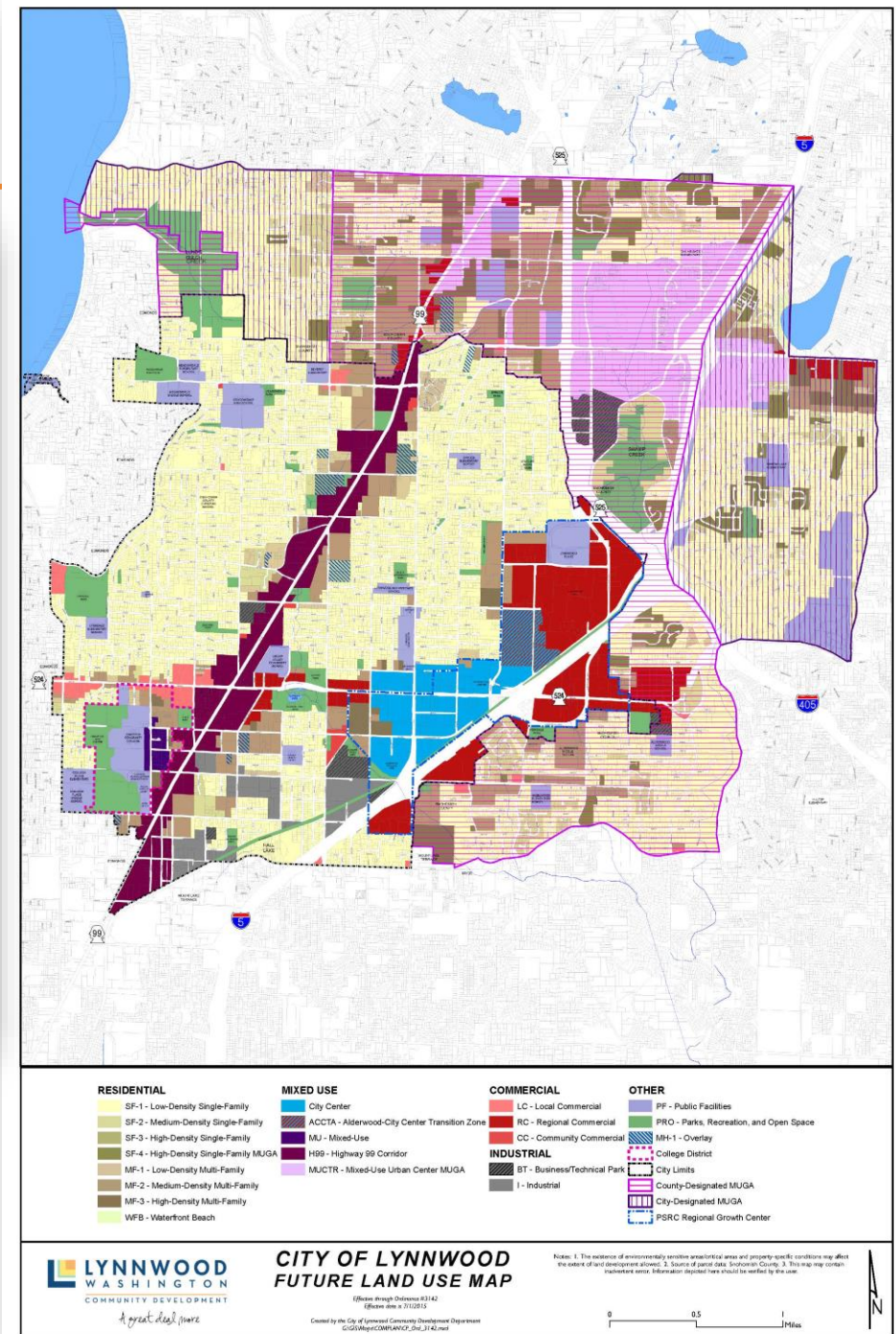
What is a Comprehensive Plan?



June 22, 2015

CITY OF LYNNWOOD
WASHINGTON

Comprehensive Plan



Planning in Washington State

- Growth Management Act (1990)
 - Address uncoordinated development and urban sprawl
 - Manage threats to the quality of life in Washington
 - Require local planning, guided by state law, and regionally enforced



Growth Management Act (GMA) Goals

1. Encourage compact urban growth
2. Reduce sprawl
3. Encourage coordinated, multimodal transportation
4. Encourage affordable housing
5. Encourage economic development
6. Protect property rights
7. Predictable permitting
8. Maintain natural resource industries
9. Retain open space, enhance recreation
10. Protect the environment
11. Encourage participation
12. Ensure availability of public facilities and services
13. Encourage historic preservation
14. Manage shoreline development



Framework

Growth Management Act (GMA)

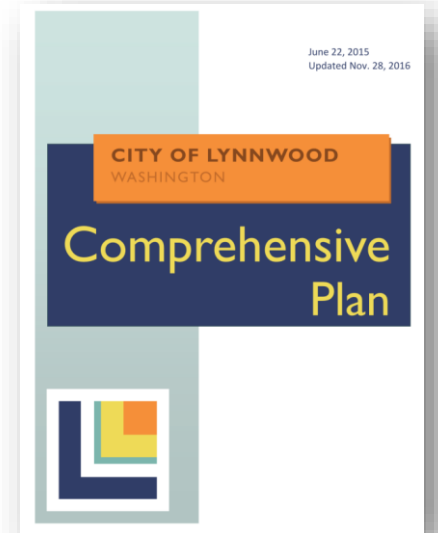
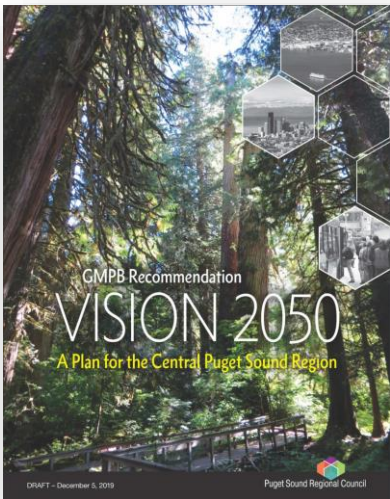
Multicounty Planning Policies (MPPs)

Countywide Planning Policies

Lynnwood
Comprehensive Plan

Regulations

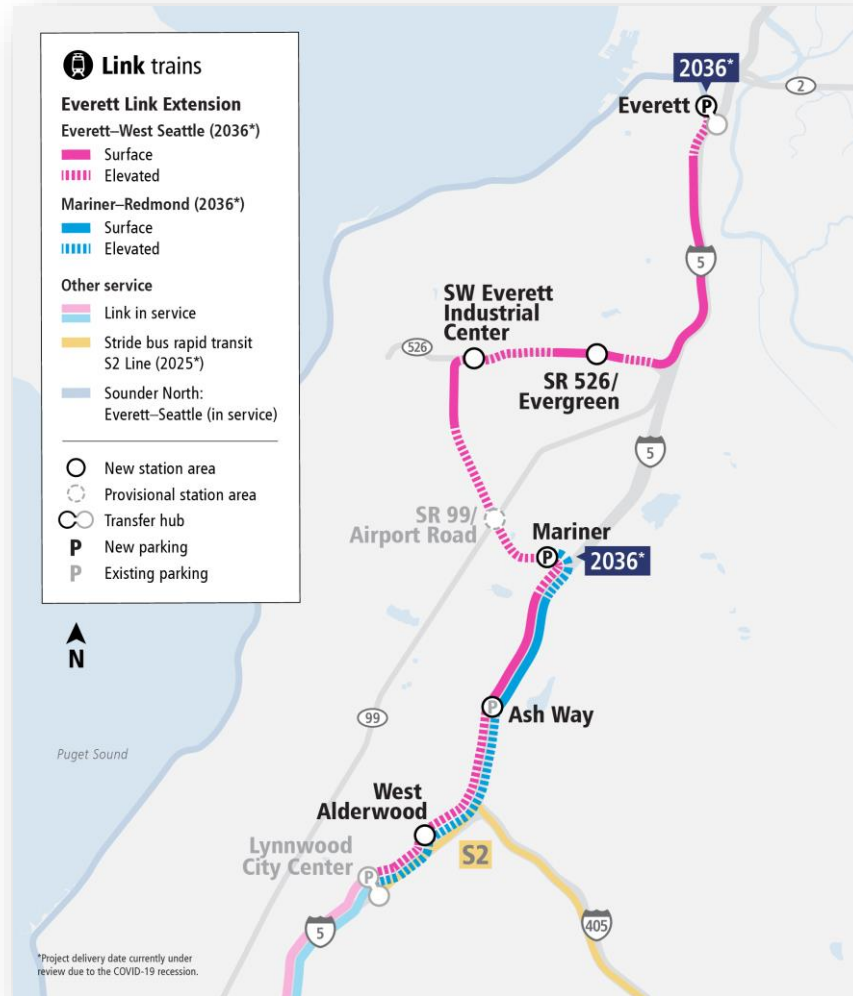
Projects



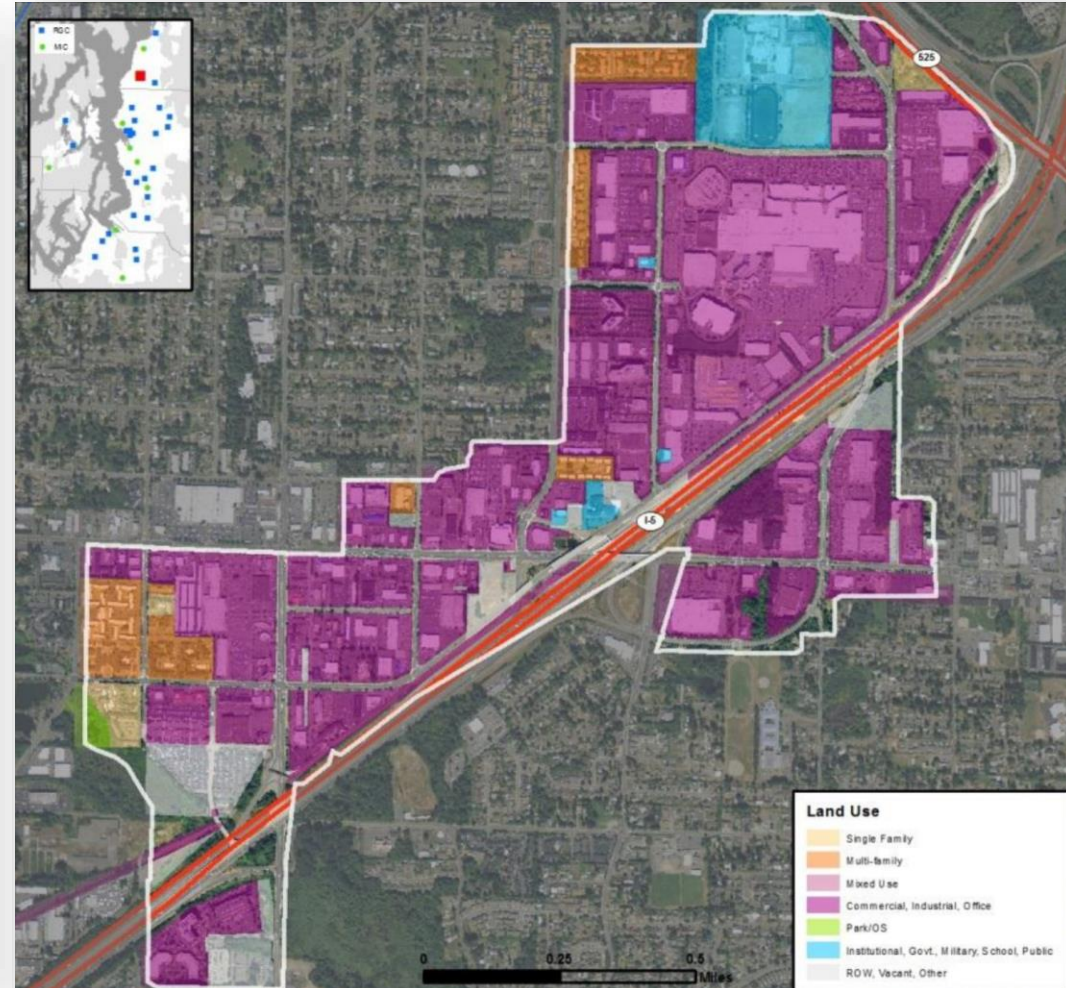
2024 Comprehensive Plan Update



Planning for 2044



Everett Link Extension



Regional Growth Center



2024 Update Themes



Coordination



Race and Social Equity



Quality of Life



Regional Connectivity



Economic Prosperity



Community Engagement



Achievable



User-Friendly



Comprehensive Plan Elements



Land Use



**Community
Character ***



**Economic
Development**



Transportation



**Parks, Recreation
& Open Space**



Housing



Human Services *



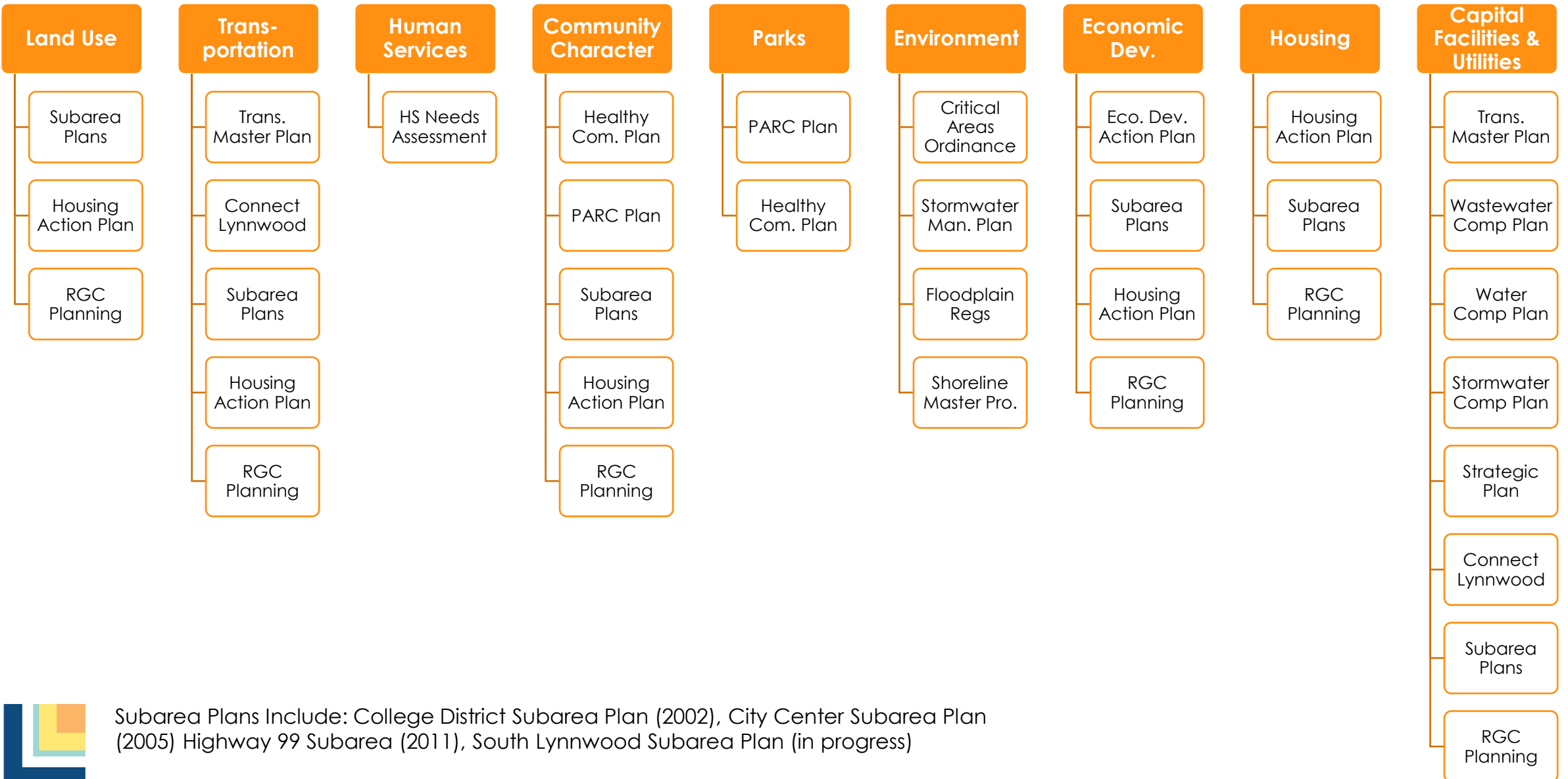
Environment



**Capital Facilities
& Utilities**



Build on Existing Efforts



Audit and Guide



Work Plan



Align Elements



Coordinate Efforts



Engage Community



Inform Decision Makers



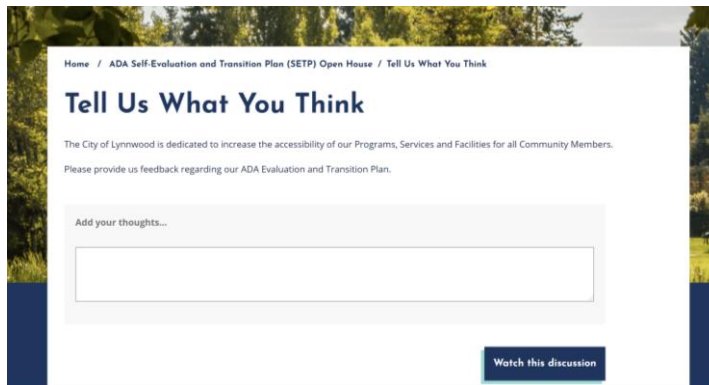
Be Efficient



Deliver



Outreach Plan



What is next for Planning Commission?

- **July 2021:** Lynnwood Comp Plan Audit Presentation
- **November 2021:** Lynnwood Comp Plan Work Plan Presentation
- **January 2022:** Lynnwood Public Engagement & Stakeholder Plan Presentation
- **2022-2023:** Updates on Lynnwood Comp Plan Element Progress
- **Early 2024:** Briefings on Lynnwood Comp Plan in preparation for Adoption
- **June 2024:** Lynnwood Comp Plan Adoption

