

EVERYONE DESERVES  
**A PARK** WITHIN A  
10-MINUTE WALK  
**OF HOME.**





## National 10-Minute Walk Campaign Goal

**To ensure there's a great park within a 10-minute walk of every person, in every neighborhood, in every city across America.**

**Lynnwood, Washington** was selected as one of 12 grantees to create a commitment and plan of action for the 10-Minute Walk campaign.





## Park Access in Lynnwood

**76%** of residents live within a 10 minute walk of a park.



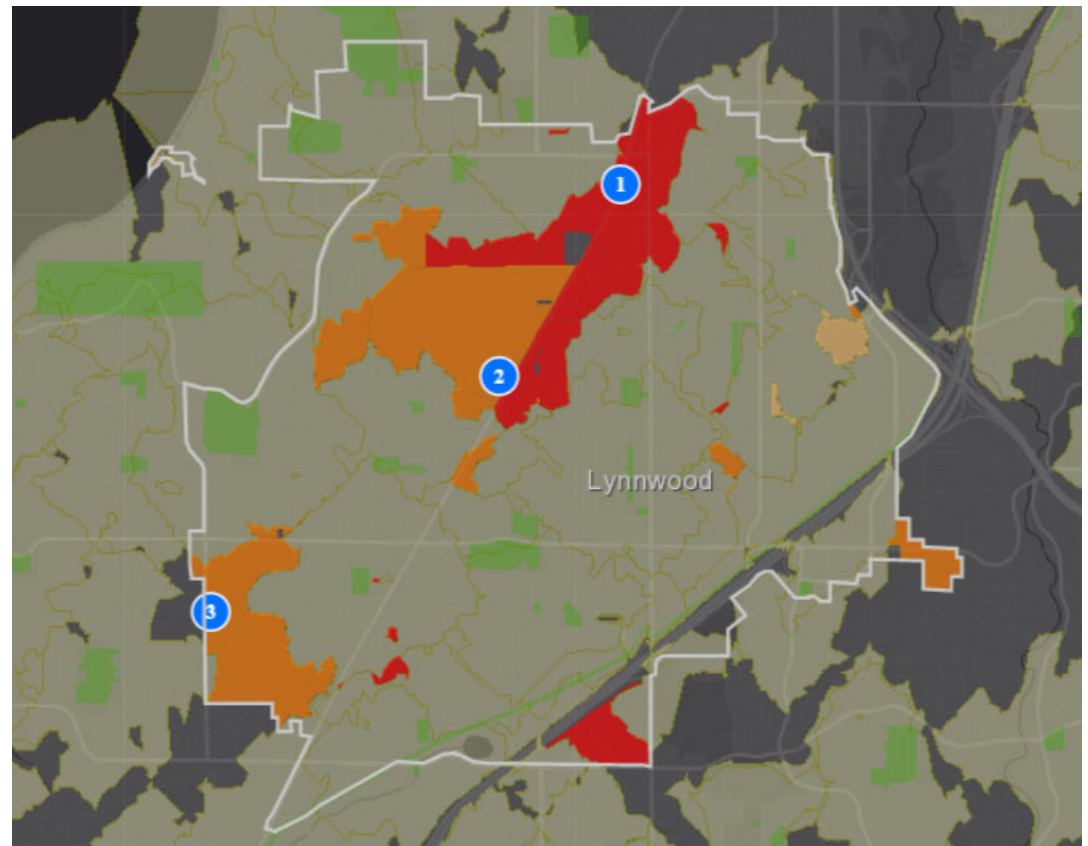
National average **54%**



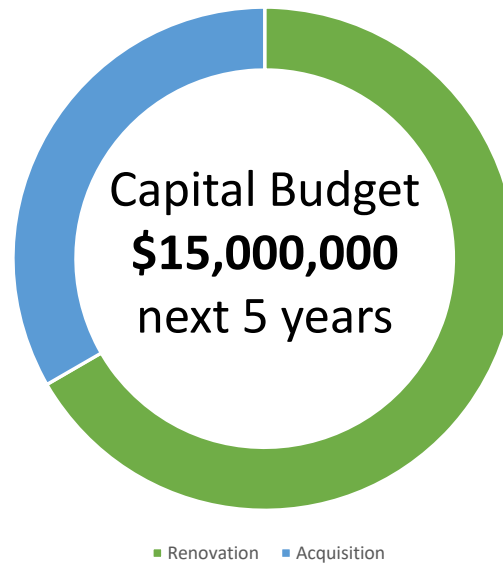


## Park Access and Quality in Lynnwood

- 17 Developed Parks
- 158 developed acres + 231 undeveloped acres
- 10.04 acres of parks per 1,000 residents
- 4.07 acres of developed parks per 1,000 residents
- 2,278 residents per park
- \$43.35 in parks operating expenditures per resident
- \$4,315 in parks operating expenditures per acre of parkland



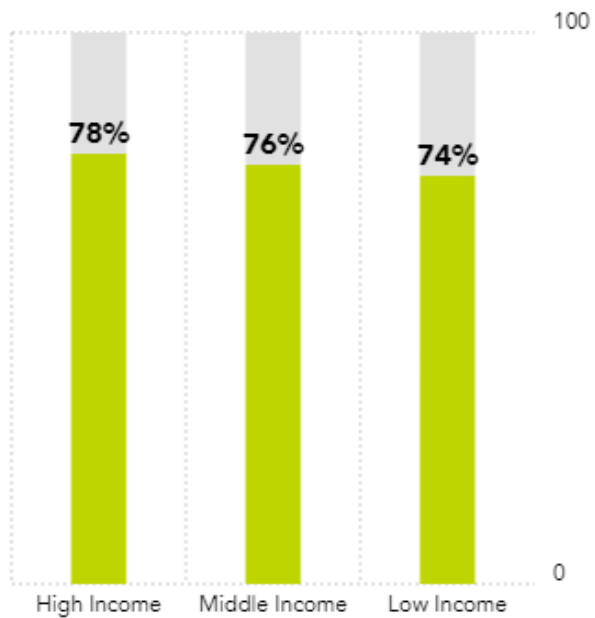
## Park Access and Quality in Lynnwood



System-wide  
Deferred Maintenance  
**\$3,000,000**

## Park Access by Population

PERCENT OF RESIDENTS WITHIN A 10-MINUTE WALK OF A PARK BY INCOME ①



PERCENT OF RESIDENTS WITHIN A 10-MINUTE WALK OF A PARK BY RACE/ETHNICITY ①



## City of Lynnwood's Commitment

1. Lynnwood is committed to increasing the percentage of residents living within a 10-minute walk to a park from 76% to 85% by 2030 by ensuring there are new parks developed in the city's urban and densifying core and through policies in the Active & Accessible Transportation Plan that will prioritize increased multimodal connectivity to all neighborhood parks.
2. Lynnwood is committed to improving park quality by addressing the \$3,000,000 in deferred maintenance by 2030.



**Mayor Nicola Smith**

## Media Coverage

### City cuts ribbon for Lynnwood's Interurban Trail Plaza

Posted: April 04, 2019 8:00



From the left: Parks and Recreation Deputy Director Sarah Olson, Parks and Recreation Board Chair Kris Hildebrandt, Lynnwood City Council President Benjamin Goodwin, Councilmember Shannon Beckins, County Councilperson Stephanie Wright, Mayor Nicola Smith, County Executive Dave Somers, Council Vice-President Christine Pissell, Parks, Recreation & Cultural Arts Director Lynn Sordal and Parks Superintendent Eric Peterson.

The City of Lynnwood earlier this week held a ribbon-cutting ceremony in honor of the Interurban Trail's new 40th Avenue West Plaza. The celebration, held April 22, also included a tree planting in honor of Arbor Day and Earth Day.

The new plaza features picnic tables, a workout station, bicycle-service station and kiosk. The plaza also includes fruit trees and edible plants like blueberry bushes planted by Girl Scout Troop 41248. Improvements to the Interurban Trail were in line with the city's vision of creating a fun and inviting city for the public, said Parks and Recreation Deputy Director Sarah Olson.

"Making improvements along the trail has become our priority focus as we completed the final missing-link segment to the trail in Lynnwood last fall," she said.

The celebration included planting a gale crab apple tree and seven Leyland cypress trees.

The project was funded by the Lynnwood Parks and Recreation Foundation, Snohomish County and Arbor Day Foundation. The project was also made possible through the efforts Experience Momentum, H&B Landscape Architecture, Interwest Construction and Giddings Donnelly.

The plaza is located at 40th Avenue West and Alderwood Mall Boulevard.

### LYNNWOOD TODAY

ABOUT ▾

ADVERTISE ▾

SUPPORT US



ELECTION

OBITUARIES

EAT / PLAY / LIVE

EVENTS ▾

HEALTH & FITNESS

HOME & REAL ESTATE

SOUND SILVER LIVING

COLUMNS ▾

PHOTOS

PUBLIC SAFETY

SCHOOLS

SPORTS

MARKETING SERVICES

### Live near a Lynnwood park? Become a Park Champion

Posted: July 15, 2019 4:41



The City of Lynnwood was selected to receive a \$40,000 grant from the National Recreation and Park Association to support Lynnwood's planning and policy efforts that help increase access to high-quality parks — and the city is inviting residents to become park champions.

Do you or your family live near a Lynnwood park? Like to play basketball or soccer? Use playgrounds, trails, or picnic areas? Parks are critical for healthy thriving communities and the city wants to hear about how you are getting to and using parks.

As a Park Champion, you will map your walk to a park, take observations, and complete a short survey. This is an

opportunity to provide your feedback on getting to your neighborhood park safely and share about your park experience.

Research shows that access to high-quality parks within a half mile of home have a wide range of benefits to a community, the city said in an announcement.

Parks improve overall health by providing opportunities to be physically active.

Parks help grow local economies by increasing property values of nearby homes and supporting visitors and tourism.

Parks improve residents' overall quality of life by conserving natural areas and providing protection from climate change.

Parks make the community livable by providing recreational and social opportunities.

Mayor Nicola Smith is a proud signatory of the 10-Minute Walk campaign, led by the National Recreation and Park Association, The Trust for Public Land (TPL) and the Urban Land Institute (ULI). To learn more about the campaign visit: [10minutewalk.org](http://10minutewalk.org)

To learn more and become a park champion, visit: [www.healthylynnwood.com](http://www.healthylynnwood.com)



### Inspiration Happens Here

We invite you to meet our teachers and see for yourself what an exemplary Christian Education looks like.

**All School Open House**  
(Preschool ~ High School)  
Sunday, February 9 at 2:00 pm

Offering Spanish Immersion  
for Kindergarten



[www.kingschools.org](http://www.kingschools.org)  
206.289.7783

3995 Fremont Ave. N • Shoreline, WA 98135



April 2019  
Opened new  
plaza and  
fitness zone  
serving a  
regional trail.

July 2019  
Seeking  
community  
members to  
participate in  
study as park  
champions.





## Thank you to our Partners



- Healthy Lynnwood Interns
- Latino Education and Training Institute
- National Recreation & Park Association
- Safe Routes Partnership
- SHAG Senior Living
- The Trust for Public Land NW Office
- ULI Northwest
- UW Bothell Nursing Students
- Verdant Health Commission

### City of Lynnwood

- Public Works
- Economic Development
- Community Development
- Parks & Recreation Board
- Planning Commission





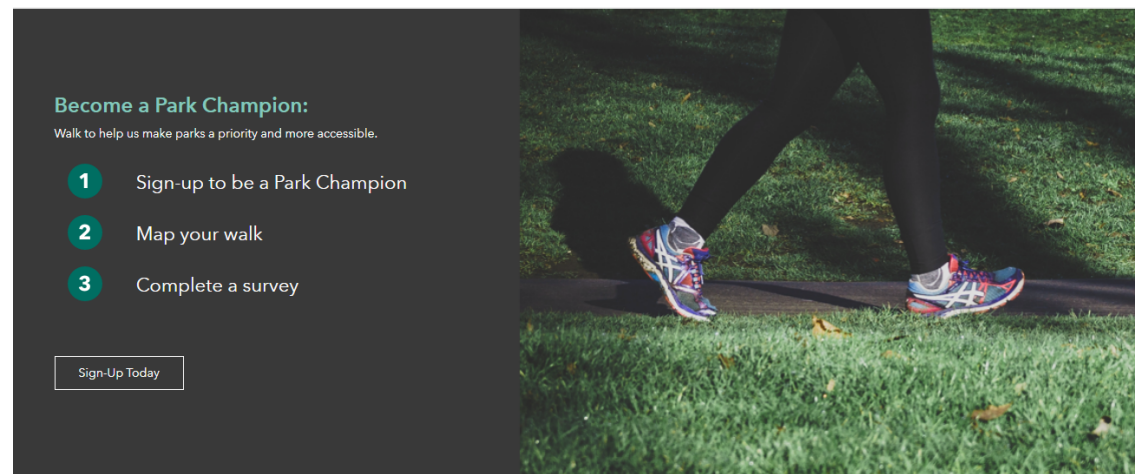
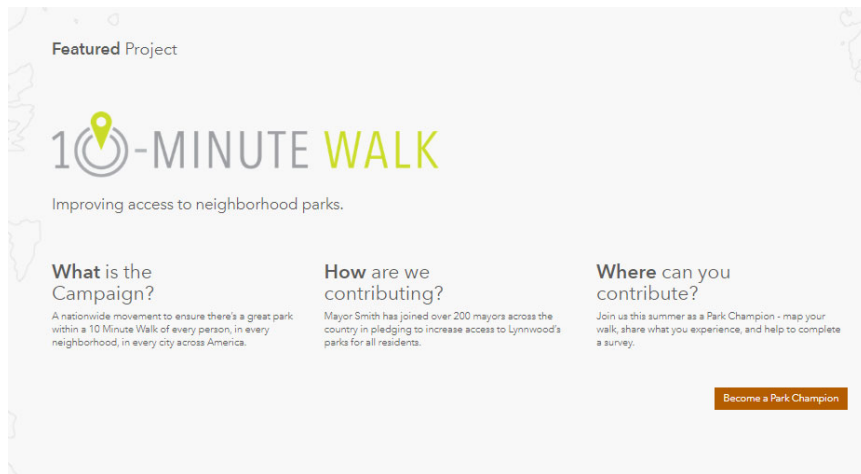
## Community Engagement



We partnered with 13 UW Nursing Students to create park profiles, conduct walk audits to every park, and assist with community park champion recruitment.



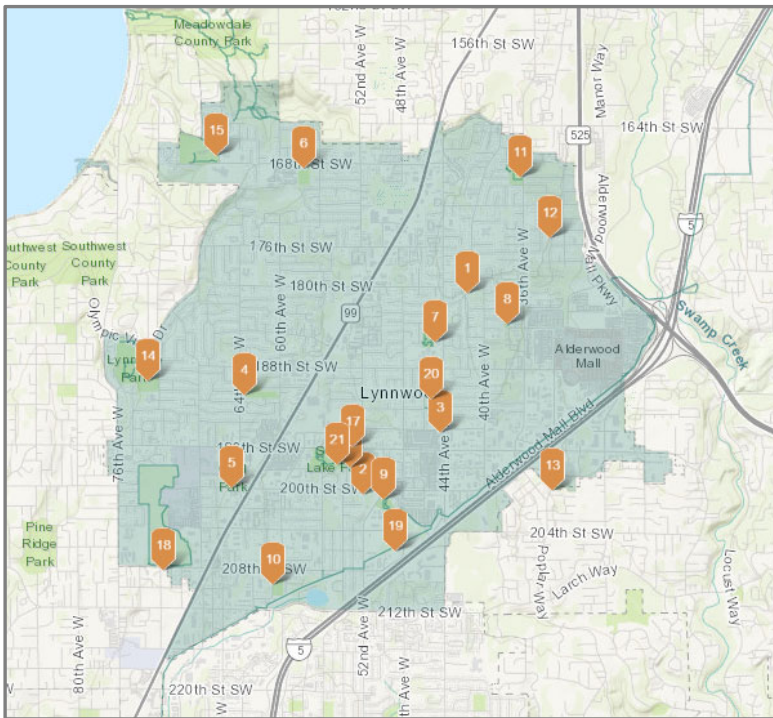
## Community Engagement



We recruited community park champions to participate in conducting park walk audits from their homes to their neighborhood park. Recruitment was a multi-pronged approach including online, in-person meetings with resident groups, and targeted outreach to multifamily complexes, seniors, kids, and communities of color. It also included a message from Mayor Smith at her State of the City Address, postcards in English and Spanish sent to every Lynnwood household, and highlighting the initiative on the City's new open data portal: [www.connect.lynnwoodwa.gov](http://www.connect.lynnwoodwa.gov)



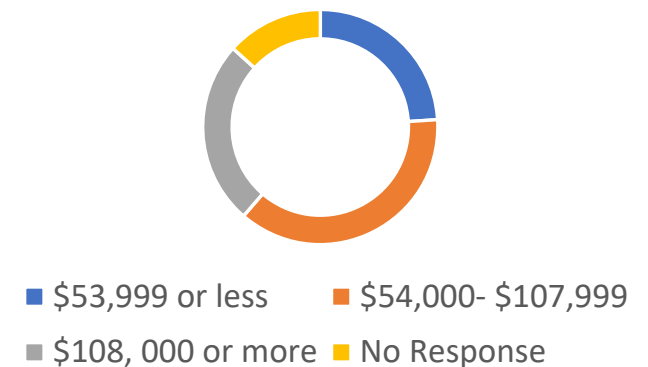
## Community Engagement



- North Lynnwood: 15
- Meadowdale: 10
- Lynndale: 9
- Daleway: 8
- Spruce: 7
- South Lynnwood: 5
- Scriber Lake: 4
- Gold: 3
- Wilcox: 3
- Pioneer: 2
- Scriber Creek: 1
- Maple Mini: 1
- Veterans: 1
- Interurban Trail: 1

In total, we recruited 75 community park champions to conduct walk audits to 13 parks across the city. Champions represented all income levels

Household Income







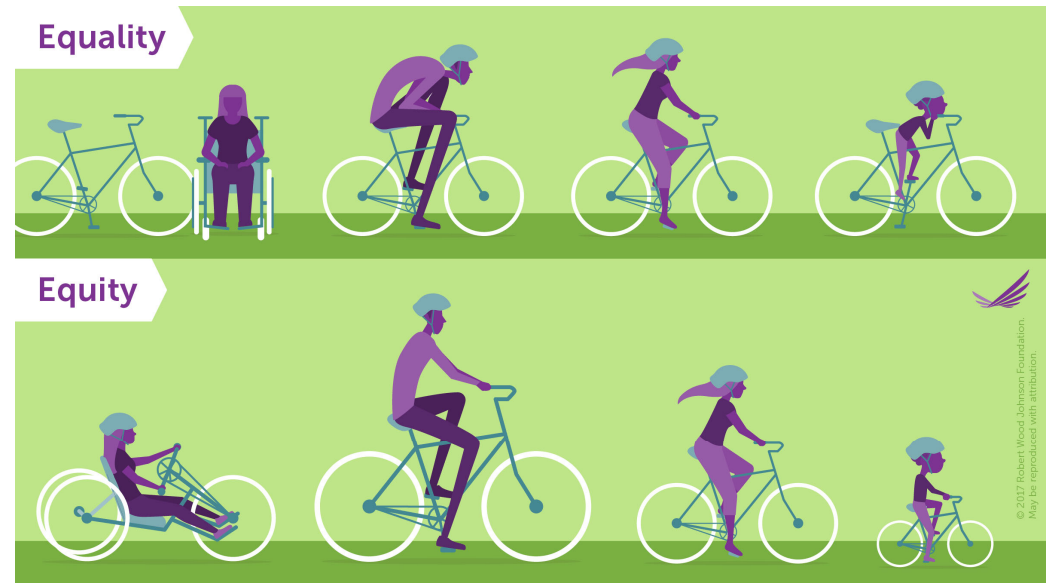
## Commitment Plan

Objective		Measure of Success	Status
1.	Conduct Park Walk Assessments throughout the community to engage residents in the initiative and gain input on how the City can improve their path of travel to parks by September 2019.	Monitor and track total number of walk audits completed. Track demographics of park champions who participate.	Completed
2.	Create a Park Access Plan utilizing geomapped observations from the walk audits and analysis of where there are opportunities to make more direct connections to existing parks by December 2019.	Completion of plan.	In-Progress
3.	Incorporate Park Access Plan into Active Transportation Plan as a weighted prioritization criteria to be adopted by September 2020.	Inclusion of weighted factor in plan.	In-Progress
4.	Add 10MW policy goal to Parks level of service at 5-year comp plan update by Fall 2021.	Adoption of level of service goal.	Not started
5.	Align annual Capital Facilities Plan (CFP), Transportation Improvement Plan (TIP), and Capital Budget funding to priority bike/ped access enhancements prior to 2021 adoption of these plans.	% of annual capital funding that is spent on priority-ranked access enhancements.	Not started
6.	Conduct park usage (capacity) and quality assessments (user surveys) by October 2020.	Complete Usage counts at a minimum of 6 parks. Collect a minimum of 1,000 park user surveys.	Not started

## Commitment Plan -- Equity

Our approach to providing safe access to quality parks in Lynnwood centers around:

1. Improve the walking network to existing parks for all ages and abilities.
2. Acquire and develop parks in gap areas especially high-need neighborhoods.
3. Improve the quality of existing parks by eliminating deferred maintenance issues.
4. Add new amenities and opportunities to the park system.

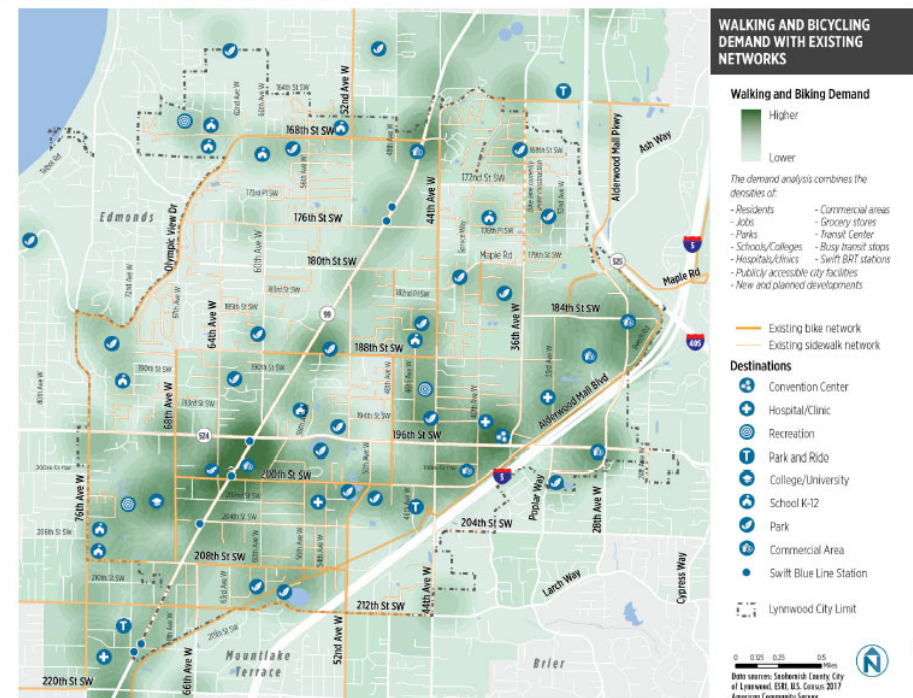


## Commitment Plan -- Equity

Improvements to the walking network will be prioritized by weighted factors including proximity to parks, schools, high-demand commercial areas, and high-density residential areas. This strategy will be the basis of the new Active and Accessible Transportation Plan.

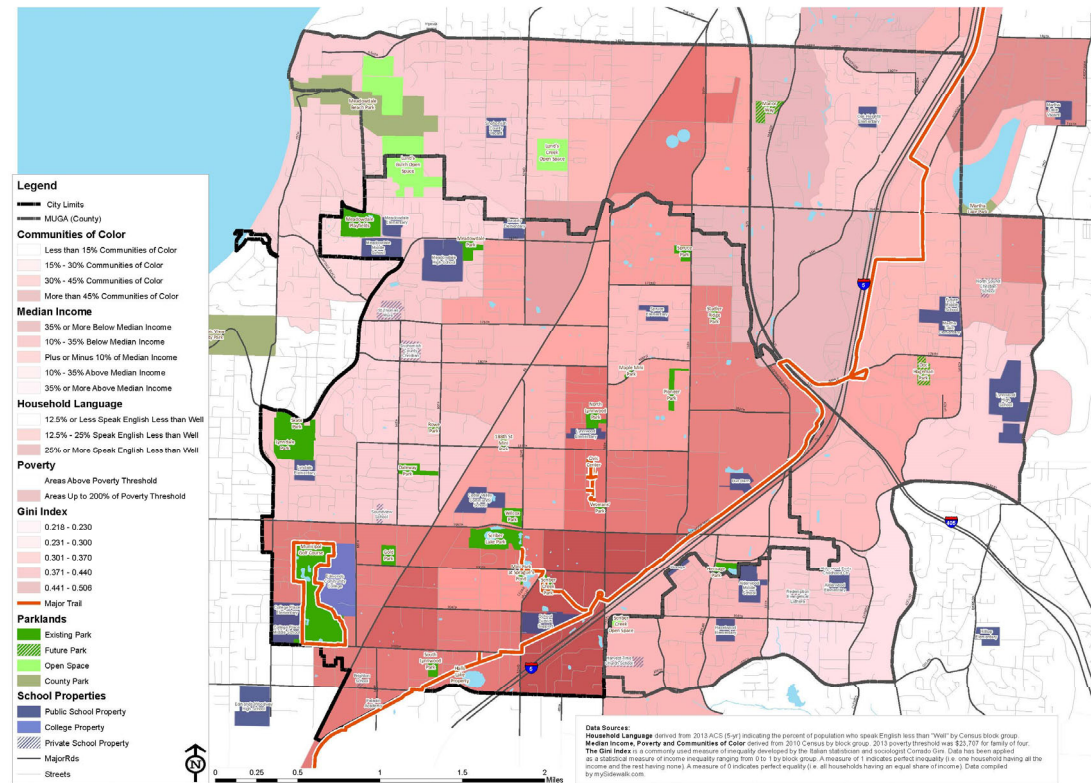
### WALKING AND BIKING DEMAND

- Highest demand areas around:
  - City Center
  - Alderwood Mall
  - SR 99 corridor
  - Edmonds Community College



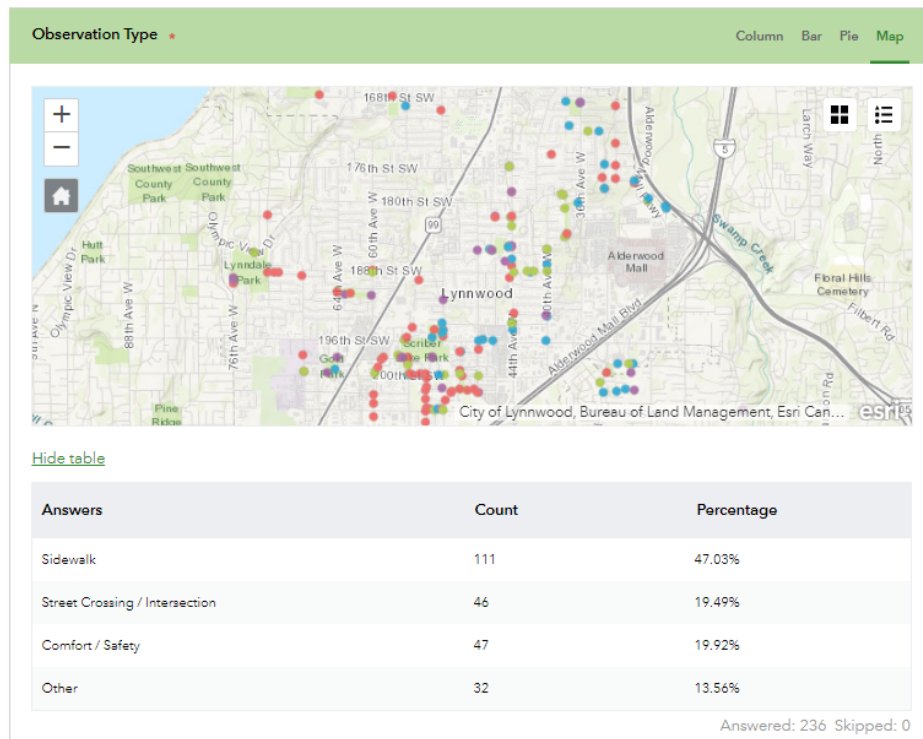
## Commitment Plan -- Equity

Addressing deferred maintenance and making park improvements are being prioritized to parks in the highest need neighborhoods. Neighborhood need is measured from census data equity factors as shown in the composite map (right).





## Next Steps



Next 3 months:

- Complete ULI Study Visit
- Finalize analysis of park walk audit data
- Finalize park access plan
- Discuss level-of-service changes with Park Board



## Next Steps



Next 6 months:

- Complete outreach on Park Access Plan and Connect Lynnwood: Active & Accessible Transportation Plan
- Complete Park Usage Study
- Complete Park User Survey



## Next Steps



### Next Year:

- Adopt Connect Lynnwood: Active & Accessible Transportation Plan
- Update park level-of-service standards for park access and park quality
- Adopt Parks, Arts, Recreation & Conservation (PARC) Comprehensive Plan



## Evaluation and Sustainability

The immediate measure of success for this 10-minute walk grant will initially come at adoption of the Connect Lynnwood Plan with the Park Access Plan element later this year followed by the adoption of an updated PARC Plan with improved level-of-service goals next year.

These comprehensive plans and policy documents will serve to prioritize future investments in parks, park upgrades, and walking networks.

The long-term measure of success will come when the City has improved access to parks to 85%, eliminated our back-log of deferred maintenance, and improved the overall quality of our park system.

These goals can only be achieved if the plans and policies effectively direct future investment spending equitably to improve health for youth, seniors, low-income, and minorities living in Lynnwood.