



## City of Lynnwood Public Art Tour

The City of Lynnwood's Public Art Collection currently is made up of 23 large site specific pieces and over 120 portable works such as paintings, photographs and prints. The collection is maintained by the Lynnwood Arts Commission and can be found carefully displayed throughout municipal buildings, parks and public spaces throughout the city. This tour is a small sample of that fine collection of art. For interior art pieces, all city building are open 10am to 5pm, Monday to Friday, except holidays.

### Artwork around Civic Campus

#### **Lutz Haufschild**

*Firefighting Windows*

3 window with silk screened and laminated glass  
1996

Main entrance to Firestation 15, 18800 44th Ave W

Originally from Germany, Lutz Haufschild has been working as a sculptor and glass artist in Canada since 1969. He believes architecture and art, as well as architect and artist should complement each other.



#### **Hai Ying Wu**

*Dance*

bronze sculpture  
1991

Main Entrance to Lynnwood Recreation Center, 18900 44th Ave W

Hai Ying Wu is an internationally known sculptor from Everett. His works include the "Fallen Firefighter Memorial" in Seattle. Whereas the Memorial is a realistic piece, Dance is more abstract. But his sculptures never seem dated. Dance reflects the fun activities that take place inside the Recreation Center.



#### **Pam Beyette**

*Avenues to the Future & Future's Time Keeper*

glazed and etched tile mosaic entrance and tile/copper time capsule  
1995

Main Entrance, North Administration Building, 19000 44th Ave W

Pam Beyette is a public artist in Seattle. Her projects are like a bridge between art and the community, generating excitement, civic pride and public participation. The outside tiles contain images and symbols from the history and development of the city. The inside piece contain a time capsule with predictions from young students. It will be opened in 2015.



#### **Richard LaLonde**

*The Four Directions*

fused glass (four pieces)  
1995

Senior Center Lobby, 19000 44th Ave W

Fused glass is created by bonding or melting together two or more pieces of glass through heat, such as kiln firing or torch. The 4 pieces, from Heart of the World series, are about searching for our place in the universe and living in balance with nature.



#### **Tom Morandi**

*Untitled*

waxed, welded bronze sculpture with dark patina  
1979

East Lawn of North Administration Building, 19000 44th Ave W

Tom Morandi's bronze piece is set in a peaceful grassy area east of the North Administration Building. Look at how Tom fits the complex curves and shapes into a seamless form that intrigues from all angles. This piece is on a ten-year loan from the Alderwood Mall.



## William Morris

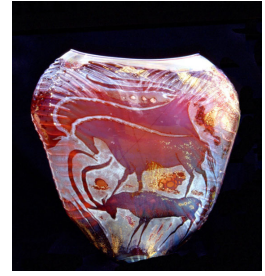
*Petroglyph Vessel 1990*

Blown Glass vessel

1990

City Hall lobby, 19100 44th Ave W

William Morris, from Seattle, is considered to be one of the most gifted and innovative glass artists in America today. In the early 1980's, he worked as Dale Chihuly's master glassblower. Look for images that reflect his interest in archeology, myths, and ancient cultures, in a time when humans were more in tune with nature.



## Lee Kelly

*Untitled*

stainless steel sculpture

Lawn across from City Hall Parking Lot, 19100 44th Ave W

Sculpting since the 1960's, Lee Kelly is one of the Northwest's most widely represented artists in public places. His massive steel sculpture stands in the grass amongst the trees and urban landscapes. Affectionately known as the "elephant", it is also loved for the thunderous sounds it makes when thumped. This piece is on a ten-year loan from the Alderwood Mall.



## Maya Radoczy

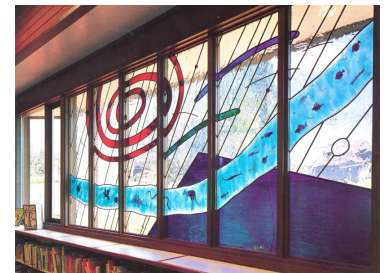
*Myth and Magic in the City*

fused and leaded glass window

1990

Lynnwood Library, 19200 44th Ave W

Through years of training at some of the Northwest's most prestigious art institutions, Maya Radoczy has perfected the art of fused glass. She designed Myth and Magic in the City specifically for the Library to celebrate the discoveries that occur in the Library and how they shape our community. Both adults and children enjoy the window's colorful design.



## Koryn Rolstad

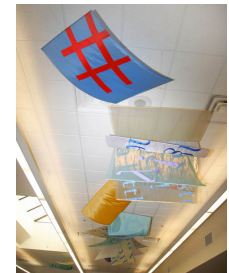
*Currents*

applique & silkscreen on aerial textile sculpture (3 books & 16 pages)

1998

Lynnwood Library, 19200 44th Ave W

Books flying open with windblown pages, twisting as if the wind had visited the library. Text, punctuation, and Internet symbols are appliquéd onto the fabric in fun whimsical colors



## Tom and Lea Anne Askman

*Untitled*

multi-faceted cast bronze, brick and rock works/water feature

1999

Lynnwood Library, 19200 44th Ave W

Water adds sound and movement to sensitively modeled cast bronze works. Bronze hands holding a book burst out of the brick wall, giving a sense of how knowledge leads to action and strength. Look for the creatures that live in the river rock-lined stream bed.



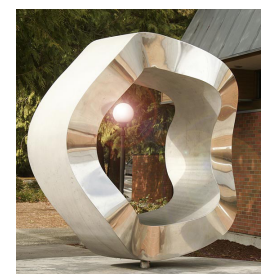
## Ted Jonsson

*Sinusoidal*

stainless steel sculpture

Lynnwood Library, 19200 44th Ave W

Ted Jonsson is a master with stainless steel and geometric forms. Sinusoidal's simplicity is a perfect example of the idea that less is more. The contrast between the highly polished, reflective and the brushed, less reflective surfaces invites you to touch the sculpture. Try viewing straight through the opening from opposite ends, and discover how the shapes change.



## Ron Petty

*Future Track*

bronze cast animal sculpture and painted interurban rail; Centennial sculpture  
1989

Behind Library on grass hill south of City Hall, 19200 44th Ave W

Future Track was created to mark the Washington State centennial. As the interurban railway opened up the wilderness (represented by the long tailed weasel, coyote, raccoon, Canadian Goose, and the crow) in the early 20th century, the track we take today will carry Lynnwood into the future.



## Bruce West

*Untitled*

welded stainless steel sculpture

Entrance to Civic Center Complex, 44th Ave W

Bruce West's stainless steel sculpture sits on a hill in Civic Center Park, marking the entrance to the Civic Center Complex. It looks as though the solid sides want to break up and fly off. It is a humorous use of something we think of as very solid: stainless steel. West's work is on a ten-year loan from Alderwood Mall.



## Mara Smith and Kris King

*Nature of the Northwest*

two carved brick murals

1993

Civic Center Justice Facility, 19321 44th Ave W

The Lynnwood Civic Justice System build in 1993 features a set of 334 square foot carved brick murals entitled "Nature of the Northwest." In the 1970s, Mara Smith practically revived the ancient art of brick carving. Visitors marvel at the size and incredible details of the murals. "Nature of the Northwest" invites visitors to touch and explore all the plants and wildlife.



## Artwork at Lynnwood Senior Center

### Jacob Lawrence

*Studio (UW)*

lithograph, ed. 20/50

1994

Lynnwood Senior Center, 19000 44th Ave W

Jacob Lawrence, one of the most important artists of the 20th century, is best known for his series of narrative paintings depicting important moments in African American history. He loves to paint tools because they are beautiful. They are beautiful because they are made to be useful.



### Jacob Lawrence

*The Builders: The Family*

serigraph, ed. 177/300

1974

Lynnwood Senior Center, 19000 44th Ave W

When we walk down the street, we see many people and each person is doing a different thing. So the picture helps us focus on some of the people and when we look more carefully, we see others. Jacob likes to paint builders and workers because they share the good goal of building strong communities, and because work itself is beautiful. Work commands respect because work puts bread on the table, and because work brings people of all races together.



## Artwork throughout Lynnwood Parks

### **Michele Van Slyke**

#### *Benches*

welded steel sculptures, 6 benches/7 stools

1993

Scriber Lake Park, 5322 198th ST SW

Artist Michelle Van Slyke designed metal and wood benches and lily pad stools placed throughout Scriber Lake Park. People visit Scriber Lake to escape the urban landscape for a short while. The benches are detailed with carvings of blackbirds, ducks, salmon and salamanders, each giving a peek at the lake's inhabitants.



### **Jim Ballard and Richard Hestekind**

#### *Community*

granite sculptures; 16 figures

1993

Meadowdale Playfields, 16700 66th Ave W

The 16 granite sculptures created by Jim Ballard and Richard Hestekind were appropriately named "Community". The artists say the pieces "reflect the kinds of people who use the park: individuals, families and large groups." This project was commissioned in 1993 as a joint project between the City of Lynnwood and the City of Edmonds.



### **Wendy Reed**

#### *Strategies*

base relief bronze sculptures and eleven bronze plaques

1994

Spruce Neighborhood Park, 18620 36th Ave W

Wendy Reed created a series of whimsical bronze relief sculptures to reflect on the game of basketball. On the low walls surrounding the basketball court, you see bronze legs in various poses. You can imagine players sitting on the bench with a basketball by their side. You also find eleven bronze plaques each with common basketball plays.



### **Aristotle Georgiades and Gail Simpson**

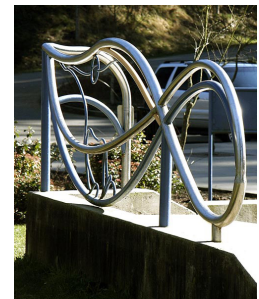
#### *Fluid Motion*

painted steel railing, aluminum softball, basketball, soccer ball

1999

Lynndale Park, Skate Park, 18927 72nd Ave W

Fluid Motion was a joint public art project between the City of Lynnwood and the City of Edmonds. Gail Simpson and Aristotle Georgiades created the set of three sculptural steel railings as a way to capture the spirit of the park's activities. It mimics the "curving lines" and "bouncing lines" created by park users with skateboards, Frisbees and basketballs.



### **Louise McDowell**

#### *Gentle Encounter*

cast bronze sculpture

2003

Heritage Park, 19921 Poplar Way

Heritage Park celebrates local history. In the 1920s the Lynnwood area was the second largest egg producer in the U.S. Many people moved here to try the life of farming, "Gentle Encounter" evokes a delightful vision of children playing with the chicken and baby chicks. This sculpture will definitely bring a smile to your face.



## **Chris Vondrasek**

*The Raven and the First Salmon, the Humans and the Last*  
wood, powder coated steel, metal, rubber tire, stone, paint  
2003

Meadowdale Neighborhood Park, 5600 168th St SW

Chris Vondrasek created the pole and bench using timber found at the park. Sit on the bench and imagine salmon swimming by you as they migrate. As the Raven looks on from above, salmon return home upstream, and take on bright colors. The pole hints at some of the obstacles to the survival of the salmon: logging, mining, and urban development.



## **Frequently Asked Questions**

### **What is the 1% for public art?**

New city construction generates 1% from its budget for public art. The 1% creates art that will be enjoyed and used by the public and enhances the space and welcomes our citizens. Examples include stand-alone sculpture, building parts and functional art.

### **How is the art selected and created?**

Applying artists are narrowed down to several finalists by an organized selection panel that consist of arts professionals, council members, arts commissioners, citizens and users of the facility.

Finalist then go back and develop a site specific proposal that is presented at a public meeting. An artist is then selected, and recommended to City Council for approval. The art is then commissioned, created and installed.

To learn more about the arts in Lynnwood visit: [www.PlayLynnwood.com](http://www.PlayLynnwood.com)

Lynnwood



Commission