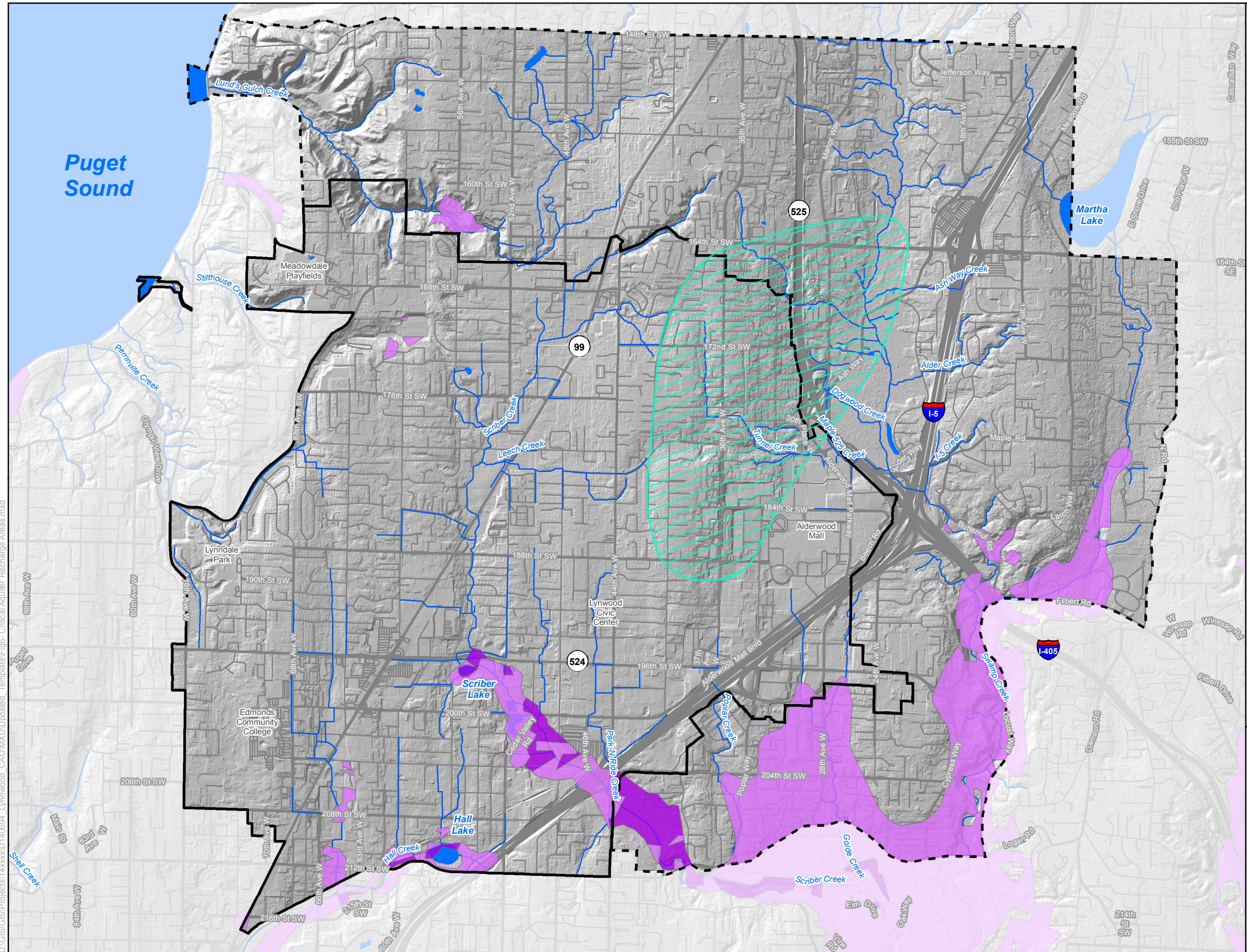


U:\GIS\GIS\Projects\14xxx\140694_Lynnwood_CAOMXD\Updated_Template\Fig6- Critical Aquifer Recharge Areas.mxd



ENVIRONMENTALLY CRITICAL AREAS INVENTORY

Critical Aquifer Recharge Areas

Legend

USGS Aquifer Sensitivity

Moderate, 40 to 100 ft Deep

High, 0 to 40 ft Deep

Wellhead Protection Area for
164th Street Artesian Well

Stream

City Limits

Municipal Urban Growth Area

Water Body

0 0.5
Miles



SOURCE: USGS, 1997; Washington Department of Health, 2001; Snohomish Health District, 2001; ESA, 2016; Puget Sound LiDAR Consortium, 2003

This figure is intended for planning purposes only. Environmentally critical areas layers depicted in this figure are based on available City of Lynnwood, Snohomish County, and Washington State inventory information, and do not represent surveyed boundaries. The City makes no representation or warranty as to this product's accuracy or location of any mapped features. For more information, contact the City of Lynnwood.

DRAFT

