



agenda

ADA Focus Group – Meeting #2

Date 3/6/2018

Time 1:30 PM - 3:30 PM

Participants ADA Focus Group

1:30 pm – 1:45 pm

Project Status Report

1:45 pm – 2:30 pm

Summary of Facility Analysis Results

- Buildings
- Parks
- Trails
- Right-of-Way

2:30 pm – 3:25 pm

Transition Plan Phasing

- Priorities

3:25 pm – 3:30 pm

Next Steps



City of Lynnwood ADA Self-Evaluation & Transition Plan Draft Priorities for Facility Barrier Removal

Recognizing that the City has limited funds and cannot immediately make all building and park facilities fully accessible, we would like your feed back on the following draft criteria for prioritizing facilities into a timeline for removing architectural barriers:

- **Level of use by the public:** Facilities that receive a high level of public use receive a high priority;
- **Program uniqueness:** Some programs are unique to a building, facility, or park and cannot occur at another location;
- **Geographic distribution:** By selecting a range of facilities that are distributed throughout the City, the City can ensure maximum access for all residents;
- **Citizen Rights and Responsibilities:** Facilities where services are provided to exercise citizen rights—participation in Council and Commission meetings, access to elected officials, facilities where taxes are paid, permits and licenses are obtained, etc.
- **Identified Complaints:** Efforts should focus on City facilities where there have been accessibility complaints.

ADA Title II Regulations

Title II of the ADA (28 CFR Section 35.150 (d)) requires that state and local entities develop a Transition Plan specific to curb ramps:

28 CFR Part 35, Subpart D—Program Accessibility, § 35.150 Existing facilities.

(d) Transition plan

(2) If a public entity has responsibility or authority over streets, roads, or walkways, its transition plan shall include a schedule for providing curb ramps or other sloped areas where pedestrian walks cross curbs, giving priority to walkways serving entities covered by the Act, including **State and local government offices and facilities, transportation, places of public accommodation, and employers, followed by walkways serving other areas.**

(3) The plan shall, at a minimum—

- (i) Identify physical obstacles in the public entity's facilities that limit the accessibility of its programs or activities to individuals with disabilities;
- (ii) Describe in detail the methods that will be used to make the facilities accessible;
- (iii) Specify the schedule for taking the steps necessary to achieve compliance with this section and, if the time period of the transition plan is longer than one year, identify steps that will be taken during each year of the transition period; and
- (iv) Indicate the official responsible for implementation of the plan.

In 2002, the United States Court of Appeals for the Ninth Circuit, whose jurisdiction includes Washington, held for the first time that sidewalks constitute a service, program or activity of a city, and sidewalks are therefore subject to the ADA's program accessibility regulations. *Barden v. City of Sacramento*, 292 F.3d 1073 (9th Cir. 2002). Before the Barden decision, the law was unclear whether municipalities' transition plans should address barrier removal from sidewalks.

This page intentionally left blank.



Americans with Disabilities Act (ADA) Barrier Analysis Summary

February 20, 2018



This page intentionally left blank.

Table of Contents

List of Tables and Maps	ii
Tables	ii
Maps.....	ii
1.0 ADA Barriers in the Built Environment.....	1
1.1 Accessibility Standards.....	1
1.2 Facility Assessments.....	1
2.0 Parks, Trails, and Buildings Barrier Summary.....	3
2.1 Parks.....	3
2.2 Trails.....	7
2.3 Buildings.....	8
2.4 Parks, Trails, and Buildings Barrier Removal Summary	17
3.0 Public Right-of-Way Barrier Summary	21
3.1 Curb Ramps, Sidewalks, and Driveways	21
3.2 Public Rights-of-Way Prioritization.....	21
3.3 Priorities for Barrier Removal	22

List of Tables and Maps

Tables

- Table 1. ADA Accessibility Barrier Types at City Parks
- Table 2. ADA Accessibility Barrier Types at City Trails
- Table 3. ADA Accessibility Barrier Types at City Buildings
- Table 4. Total Percentage of Park Barriers by Category
- Table 5. Total Percentage of Trail Barriers by Category
- Table 6. Total Percentage of Building Barriers by Category
- Table 7. Curb Ramp Barrier Summary
- Table 8. Curb Ramp Barrier Summary by Barrier Type
- Table 9. Curb Ramp Barrier Summary by Rank
- Table 10. Sidewalk Barrier Summary
- Table 11. Sidewalk Barrier Summary by Barrier Type
- Table 12. Sidewalk Barrier Summary by Rank
- Table 13. Driveway Barrier Summary
- Table 14. Driveway Barrier Summary by Barrier Type
- Table 15. Driveway Barrier Summary by Rank

Maps

- Evaluated Parks and Trails
- Evaluated Buildings
- Curb Ramp Barrier Removal Projects - High Priority
- Curb Ramp Barrier Removal Projects - Medium & Low Priority
- Sidewalk Barrier Removal Projects
- Driveway Barrier Removal Projects

1.0 ADA Barriers in the Built Environment

The process of developing an American with Disabilities Act (ADA) Transition Plan includes the identification of access barriers within the built environment. The City of Lynnwood evaluated its parks, trails, buildings, and public right-of-way facilities in the fall and winter of 2017.

1.1 Accessibility Standards

At the time of the facility evaluations, the ADA 2010 Standards, 2015 Washington State Amended International Building Code (WAC), 2015 Architectural Barriers Act (ABA) Standards for Outdoor Developed Areas, and the 2011 Proposed Accessibility Guidelines for Pedestrian Facilities in the Public Right-of-Way (PROWAG) were used to identify barriers at City facilities. Building codes and standards are revised every few years. The barrier evaluations conducted provide an assessment of current conditions as viewed by current code and provide a baseline for future barrier removal.

1.2 Facility Assessments

Facility Evaluations – Parks, Trails, and Buildings

During the site evaluations of parks, trails, and buildings, all portions of exterior and interior features of the sites and facilities used by the public were evaluated. The assessment identified physical barriers in each facility that limit accessibility and compared each facility to the 2010 ADA, 2015 WAC, and the 2015 ABA.

The site evaluations were accomplished using a consultant team equipped with measuring devices, City facility information, and evaluation checklists. Diagrams and maps of each site were annotated during the evaluation process and are included with the ADA Facility Assessment Reports. The reports are available under separate cover from the City.

The elements included in the evaluations are as follows:

- Assembly Area
- Bathing Facility
- Built-in Elements
- Corridor/Aisle
- Curb Ramp
- Door/Gate
- Dressing, Fitting, Locker Room, or Sauna
- Drinking Fountain
- Eating Area
- Elevator
- Exercise Machines and Equipment
- Game and Sports Area
- Hazard
- Judicial Facility
- Kitchen
- Library
- Other Features
- Outdoor Constructed Features
- Parking Area
- Passenger Loading Zone
- Picnic Area
- Play Equipment Area
- Ramp
- Restroom
- Room
- Sign
- Stairway
- Swimming Pool/Wading Pools/Spas
- Telephone
- Trails
- Walk

A summary of the barriers identified at parks, trails, and buildings is included in section two of this report.

Facility Evaluations - Public Right-of-Way

The evaluations of the public right-of-way facilities included curb ramps, sidewalks, and driveways. The facilities were evaluated using the 2010 ADA and 2011 PROWAG accessibility standards.

The site evaluations were completed using a consultant team equipped with measuring devices and data tablets to collect GPS barrier information for curb ramps, and sidewalks, and driveways. A summary of the barriers identified within the public right-of-way is included in section three of this report.

2.0 Parks, Trails, and Buildings Barrier Summary

The evaluation included 18 parks, four trails, and eight buildings. This section describes each site with a summary of barriers to accessibility.

2.1 Parks

The evaluation included the following locations:

- Daleway Park
- Gold Park
- Heritage Park
- Lynndale Park and Off-leash Dog Area
- Maple Mini Park
- Meadowdale Park
- Meadowdale Playfields
- Municipal Golf Course
- North Lynnwood Park
- Pioneer Park
- Scriber Creek Park
- Scriber Lake Park
- South Lynnwood Park
- Sprague's Pond Mini Park
- Spruce Park
- Stadler Ridge Park
- Veterans Park
- Wilcox Park

Daleway Park

This 7.2-acre park is located at 19015 64th Avenue West in a west Lynnwood neighborhood. Park amenities include a spray park, play equipment, a basketball court, picnic facilities, parking, restrooms, play areas, and trail connections.

Barriers identified include the following features: doors/gates, drinking fountains, game/sport areas, outdoor constructed features, parking, picnic areas, play equipment areas, restrooms, trails, and walks.

Gold Park

This 6.44-acre wooded park is located at 6421 200th Street Southwest in south Lynnwood. Park amenities include signage, picnic areas, parking, trails connections, and gardens.

Barriers identified include the following features: outdoor constructed features, parking, picnic areas, and trails.

Heritage Park

This 2.82-acre park is located at 19921 Poplar Way in east Lynnwood. Park amenities include historic buildings, a museum, visitor center, heritage resource center, genealogy library, interurban trolley, exhibits, memorial plaza, picnic areas, restrooms, and parking.

Barriers identified include the following features: curb ramps, doors/gates, drinking fountains, hazards, outdoor constructed features, parking, picnic areas, restrooms, signs, stairways, walks, and other site features.

Lynndale Park and Off-leash Dog Area

This 40.17-acre park is located at 18927 72nd Avenue West in west Lynnwood. Park amenities include fields for baseball and soccer, tennis and basketball courts, an orienteering course, a skate park, play equipment, amphitheater, a picnic shelter, trails, restrooms, and parking. The off-leash dog area includes two enclosed areas, a drinking fountain, picnic tables, a bench, and a pet waste station.

Barriers identified include the following features: assembly areas, curb ramps, doors/gates, drinking fountains, eating areas, game/sport areas, hazards, outdoor constructed features, parking, picnic areas, play equipment areas, ramps, restrooms, stairways, walks, and other site features.

Maple Mini Park

This 0.75-acre park is located at 4115 Maple Road in northeast Lynnwood. Park amenities include a picnic area and play equipment.

Barriers identified include the following features: curb ramps, outdoor constructed features, picnic areas, play equipment areas, and walks.

Meadowdale Park

This 5.64-acre park is located at 5700 168th Street Southwest in northwest Lynnwood. Park amenities include a picnic shelter, parking, benches, a basketball court, play equipment, trail connections, and restrooms.

Barriers identified include the following features: doors/gates, drinking fountains, outdoor constructed features, parking, picnic areas, play equipment areas, restrooms, and walks.

Meadowdale Playfields

This 27-acre park is located at 16700 66th Avenue West in northwest Lynnwood. Park amenities include a softball complex, soccer fields, concessions, trail connections, play equipment, picnic areas, a pond, restrooms, and parking.

Barriers identified include the following features: curb ramps, game/sport areas, hazards, outdoor constructed features, parking, picnic areas, play equipment areas, walks, and other site features.

Municipal Golf Course

This year-round 18-hole course is located at 19921 Poplar Way in southwest Lynnwood. Note that the Pro Shop evaluation is included in the City buildings section of this report.

Barriers identified include the following features: curb ramps, doors/gates, drinking fountains, parking, passenger loading zones, restrooms, and walks.

North Lynnwood Park

This 6.3-acre park is located at 18510 44th Avenue West in central Lynnwood. Park amenities include a spray park, play equipment, play areas, trail connections, a basketball court, an outdoor performance area, an orienteering course, picnic shelters, restrooms, and parking.

Barriers identified include the following features: doors/gates, drinking fountains, outdoor constructed features, parking, picnic areas, play equipment areas, restrooms, and walks.

Pioneer Park

This 5.8-acre park is located at 18400 36th Avenue West in east Lynnwood. Park amenities include play equipment, tennis courts, trails, picnic areas, and parking.

Barriers identified include the following features: curb ramps, drinking fountains, game/sports areas, outdoor constructed features, parking, picnic areas, play equipment areas, walks, and other site features.

Scriber Creek Park

This 3.8-acre park is located at 20015 Cedar Valley Road in south Lynnwood. Park amenities include trails, a picnic area, and parking.

Barriers identified include the following features: outdoor constructed features, parking, picnic areas, walks, and other site features.

Scriber Lake Park

This five-acre park is located at 5322 198th Street Southwest in central Lynnwood. Park amenities include a dock, trails, picnic areas, interpretive signage, restrooms, and parking.

Barriers identified include the following features: doors/gates, drinking fountains, hazards, outdoor constructed features, parking, picnic areas, restrooms, trails, walks, and other site features.

South Lynnwood Park

This quarter-acre park is located at 20915 61st Avenue West in south Lynnwood. Park amenities include play equipment, tennis and basketball courts, a play area, trails, picnic areas, restrooms, and parking.

Barriers identified include the following features: doors/gates, drinking fountains, game/sports areas, outdoor constructed features, picnic areas, play equipment areas, restrooms, and walks.

Sprague's Pond Mini Park

This half-acre wooded park is located at 5200 200th Street Southwest in south Lynnwood. Park amenities include play equipment, picnic areas, a pond, trail connections, and parking.

Barriers identified include the following features: hazards, outdoor constructed features, parking, picnic areas, play equipment areas, and walks.

Spruce Park

This 4.5-acre park is located at 16864 36th Avenue West in northeast Lynnwood. Park amenities include play equipment, basketball courts, picnic areas, trails, restrooms, and parking.

Barriers identified include the following features: doors/gates, drinking fountains, hazards, outdoor constructed features, parking, picnic areas, play equipment areas, restrooms, stairways, and walks.

Stadler Ridge Park

This two-acre park is located at 17428 33rd Place West in northeast Lynnwood. Park amenities include play equipment, basketball courts, a play area, trails, picnic areas, interpretive signage, and parking.

Barriers identified include the following features: curb ramps, outdoor constructed features, play equipment areas, stairways, walks, and other site features.

Veterans Park

This 0.87-acre park is located on 44th Avenue West and Veterans Way (194th Street Southwest) in central Lynnwood. Park amenities include a flag display, memorial plaza, and interpretive plaques.

Barriers identified include the following features: curb ramps, parking, stairways, and walks.

Wilcox Park

This 7.2-acre park is located at 5215 196th Street Southwest in central Lynnwood. Park amenities include a flag plaza, bandstand, picnic shelter, play area, play equipment, basketball courts, restrooms, and parking.

Barriers identified include the following features: doors/gates, drinking fountains, game/sports areas, hazards, outdoor constructed features, parking, picnic areas, play equipment areas, restrooms, stairways, and walks.

2.2 Trails

The evaluation included the following trails:

- Golf Course Trail
- Interurban Trail
- Mesika Trail/Civic Center Buffer
- Scriber Creek Trail

Golf Course Trail

This two-mile trail is located at 19921 Poplar Way, and is a combination of soft and hard surfaces. The trail circles the municipal golf course and runs partially through Edmonds Community College.

Barriers identified include the following features: trail features.

Interurban Trail

The 3.8-mile portion of the trail in Lynnwood is located between 212th Street Southwest to 177th Street Southwest. The trail provides access for bicycles and pedestrians, and includes parking at two sites.

Barriers identified include the following features: trail features.

Mesika Trail/Civic Center Buffer

This 0.3-mile trail is located at 19100 44th Avenue West, behind City Hall. The trail is a soft surface loop following a seasonal stream, and includes benches.

Barriers identified include the following features: parking, walks, outdoor constructed features, picnic areas, curb ramps, and trail features.

Scriber Creek Trail

This 1.5-mile trail is located between Scriber Lake Park and Lynnwood Transit Center. The trail is a soft surface that provides to links multiple parks and the Interurban Trail.

Barriers identified include the following features: trail features.

2.3 Buildings

The evaluation included the following eight buildings:

- City Hall
- Civic/Justice Center
- Fire Station #15
- Lynnwood Library
- Lynnwood Recreation Center & Pool
- Lynnwood Senior Center
- Municipal Golf Course Pro Shop
- Waste Water Treatment Plant

City Hall

This building is located at 19100 44th Avenue W. It includes meeting rooms, restrooms, transaction counters, and dedicated vehicle parking.

Barriers identified include the following features: assembly areas, built-in elements, corridors/aisles, curb ramps, doors/gates, drinking fountains, hazards, parking, ramps, restrooms, signs, walks, and other site features.

Civic/Justice Center

This building is located at 19321 44th Avenue W. It includes restrooms, judicial facilities such as a visitors' area, holding cells, a courtroom and juror area, and vehicle parking.

Barriers identified include the following features: curb ramps, doors/gates, drinking fountains, elevators, hazards, judicial facilities, parking, restrooms, rooms, signs, stairways, walks, and other site features.

Fire Station #15

This building is located at 18000 44th Avenue W. It includes restrooms, a counter, and vehicle parking.

Barriers identified include the following features: built-in elements, doors/gates, drinking fountains, hazards, parking, restrooms, rooms, and walks.

Lynnwood Library

This building is located at 19200 44th Avenue W. It includes multiple meeting rooms, service counters, and restrooms, a picnic area, benches, and vehicle parking.

Barriers identified include the following features: curb ramps, doors/gates, eating areas, hazards, library features, outdoor constructed features, parking, picnic areas, ramps, restrooms, signs, telephones, walks, and other site features.

Lynnwood Recreation Center & Pool

This building is located at 18900 44th Avenue W. It includes several pools, a sauna, hot tub, fitness rooms, counters, restrooms, locker rooms, bathing facilities, an eating area, exercise equipment, play equipment, and vehicle parking.

Barriers identified include the following features: bathing facilities, built-in elements, curb ramps, doors/gates, dressing/fitting/locker rooms or saunas, drinking fountains, eating areas, exercise machines and equipment, hazards, parking, play equipment areas, ramps, restrooms, rooms, signs, stairways, swimming pools/wading pools/spas, walks, and other site features.

Lynnwood Senior Center

This building is located at 19000 44th Avenue W. It includes meeting rooms, restrooms, counters, a kitchen, various social spaces, a garden, and vehicle parking.

Barriers identified include the following features: built-in elements, corridors/aisles, curb ramps, doors/gates, drinking fountains, eating areas, hazards, kitchens, parking, picnic areas, restrooms, rooms, signs, walks, and other site features.

Municipal Golf Course Pro Shop

The building is located at 19921 Poplar Way in southwest Lynnwood. It includes merchandise, rentals, and restrooms, and a full-service Pro Shop.

Barriers identified include the following features: built-in elements, doors/gates, dressing/fitting/locker rooms or saunas, eating areas, hazards, restrooms, and rooms.

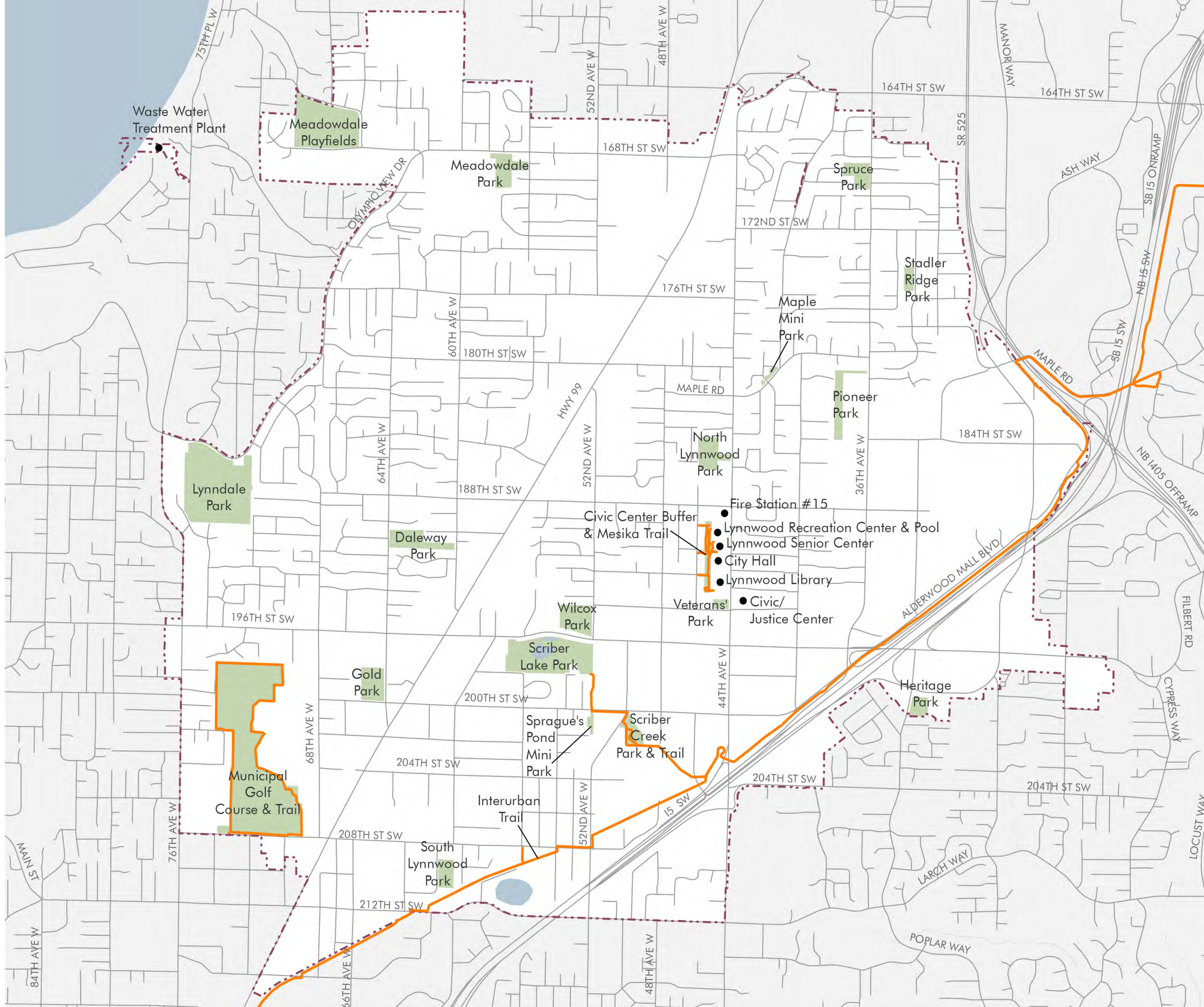
Waste Water Treatment Plant

This building is located at 17000 76th Avenue W. It includes restrooms and a water treatment laboratory.

Barriers identified include the following features: doors/gates, hazards, restrooms, and stairways.

This page intentionally left blank.

Parks, Trails, and Buildings



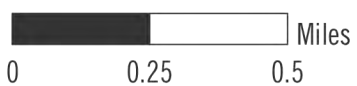
- Building
- Trail

Context

- City Limits
- Water Feature
- Streets
- Park

DRAFT

2.20.2018



This page intentionally left blank.

Table 1. ADA Accessibility Barrier Types at City Parks

Location Name	Assembly Areas	Doors/Gates	Drinking Fountains	Hazards	Outdoor Constructed Features	Parking/Passenger Loading	Paths of Travel*	Picnic/Eating Areas	Play Equipment/ Game/Sports Areas	Restrooms	Signs	Other
Daleway Park		●	●		●	●	●	●	●	●		
Gold Park					●	●	●	●				
Heritage Park		●	●	●	●	●	●	●		●	●	●
Lynndale Park and Off-leash Dog Area	●	●	●	●	●	●	●	●	●	●		●
Maple Mini Park					●		●	●	●			
Meadowdale Park		●	●		●	●	●	●	●	●		
Meadowdale Playfields				●	●	●	●	●	●			●
Municipal Golf Course		●	●			●	●			●		
North Lynnwood Park		●	●		●	●	●	●	●	●		
Pioneer Park			●		●	●	●	●	●			●
Scriber Creek Park					●	●	●	●				●
Scriber Lake Park		●	●	●	●	●	●	●		●		●
South Lynnwood Park		●	●		●		●	●	●	●		
Sprague's Pond Mini Park				●	●	●	●	●	●			
Spruce Park		●	●	●	●	●	●	●	●	●		
Stadler Ridge Park					●		●		●			●
Veterans Park						●	●					
Wilcox Park		●	●	●	●	●	●	●	●	●		

*Paths of travel encompass curb ramps, stairways, trails, walks, etc.

Table 2. ADA Accessibility Barrier Types at City Trails

Location Name	Curb Ramps	Outdoor Constructed Features	Parking	Picnic Areas	Picnic Areas	Trail Features	Walks
Golf Course Trail						●	
Interurban Trail						●	
Mesika Trail/Civic Center Buffer	●	●	●	●	●	●	●
Scriber Creek Trail						●	

Table 3. ADA Accessibility Barrier Types at City Buildings

Location Name	Doors/Gates	Drinking Fountains	Elevators	Hazards	Outdoor Constructed Features	Parking	Paths of Travel*	Picnic Areas	Play Equipment Areas	Program Specific**	Restrooms	Room Elements	Signs	Other
City Hall	●	●		●		●	●			●	●	●	●	●
Civic/Justice Center	●	●	●	●		●	●			●	●	●	●	●
Fire Station #15	●	●		●		●	●				●	●		
Lynnwood Library	●			●	●	●	●	●		●	●		●	●
Lynnwood Recreation Center & Pool	●	●		●		●	●		●	●	●	●	●	●
Lynnwood Senior Center	●	●		●		●	●	●		●	●	●	●	●
Municipal Golf Course Pro Shop	●			●						●	●	●		
Waste Water Treatment Plant	●			●			●				●			

*Paths of travel encompass curb ramps, stairways, trails, walks, etc.

**Program specific barriers include features that are typically unique to certain facilities, such as assembly areas, bathing facilities, dressing/fitting/lockers rooms and saunas, eating areas, exercise machines and equipment, judicial facilities, kitchens, libraries, swimming pools, wading pools, and spas, and telephones.

This page intentionally left blank

2.4 Parks, Trails, and Buildings Barrier Removal Summary

Accessibility barriers are prioritized in a process referenced in the ADA Title II Regulations. The principle is to ensure that basic access is provided, access to activities is provided, amenities are accessible, and alternatives to architectural modifications are allowed when appropriate.

Translating these categories into action plans must be accomplished using a programmatic approach. The site priorities are divided into four categories:

- **Category 1:** The highest Category is placed on those barrier removal items that provide accessibility at the main entrance of a facility or improve a path of travel to the portion of the facility where program activities take place (e.g., parking, walks, ramps, stairs, doors, etc.).
- **Category 2:** A second Category is placed on those barrier removal items that improve or enhance access to program use areas (e.g., transaction counters, conference rooms, public offices, restrooms, etc.).
- **Category 3:** A third Category is placed on those barrier removal items that improve access to amenities serving program areas (e.g., drinking fountains, telephones, site furnishings, vending machines).
- **Category 4:** A fourth Category identifies areas or features not required to be modified for accessibility (no public programs located in this area, or duplicate features).

This categorization was applied to each identified barrier at Lynnwood parks, trails, and buildings. Some barriers will require further evaluation by City staff for programmatic solutions. These barriers have been assigned two category values (i.e. "2 or 4"), indicating the barrier will need to be assigned one of the values but not both. The categories by site are summarized in the tables on the pages that follow. The percentages in the tables refer to the total number of barriers at each individual site.

Table 4. Total Percentage of Park Barriers by Category

Location Name	Category					
	1	2	3	4	1 or 4	2 or 4
Daleway Park	4%	65%	2%	-	-	28%
Gold Park	50%	-	-	-	-	50%
Heritage Park	8%	81%	2%	-	-	9%
Lynndale Park and Off-leash Dog Area	12%	63%	5%	-	-	20%
Maple Mini Park	8%	67%	-	-	-	25%
Meadowdale Park	3%	78%	6%	-	-	14%
Meadowdale Playfields	22%	47%	-	-	-	31%
Municipal Golf Course	19%	79%	2%	-	-	-
North Lynnwood Park	1%	69%	1%	-	-	29%
Pioneer Park	12%	65%	3%	2%	-	18%
Scriber Creek Park	13%	40%	-	-	-	47%
Scriber Lake Park	5%	66%	4%	-	-	25%
South Lynnwood Park	-	75%	5%	-	-	20%
Sprague's Pond Mini Park	12%	65%	-	-	-	23%
Spruce Park	3%	80%	4%	-	-	12%
Stadler Ridge Park	5%	85%	-	-	-	10%
Veterans Park	33%	67%	-	-	-	-
Wilcox Park	8%	46%	6%	-	-	41%

Table 5. Total Percentage of Trail Barriers by Category

Location Name	Category					
	1	2	3	4	1 or 4	2 or 4
Golf Course Trail	-	-	-	-	-	100%
Interurban Trail	-	-	-	-	-	100%
Mesika Trail/Civic Center Buffer	23%	14%	-	-	-	64%
Scriber Creek Trail	-	-	-	-	-	100%

Table 6. Total Percentage of Building Barriers by Category

Location Name	Category					
	1	2	3	4	1 or 4	2 or 4
City Hall	28%	48%	2%	-	21%	-
Civic/Justice Center	22%	69%	4%	-	-	5%
Fire Station #15	35%	63%	2%	-	-	-
Lynnwood Library	31%	51%	-	-	13%	5%
Lynnwood Recreation Center & Pool	8%	63%	3%	-	2%	24%
Lynnwood Senior Center	27%	65%	3%	-	2%	3%
Municipal Golf Course Pro Shop	16%	84%	-	-	-	-
Waste Water Treatment Plant	33%	63%	-	-	-	4%

This page intentionally left blank

3.0 Public Right-of-Way Barrier Summary

Right-of-way facilities were evaluated during the fall and winter of 2017 using criteria from the 2015 Washington State Amended International Building Code, 2011 Proposed Accessibility Guidelines for Pedestrian Facilities in the Public Right-of-Way, and the 2010 ADA Standards.

3.1 Curb Ramps, Sidewalks, and Driveways

The evaluation of public right-of-way facilities for this planning process includes curb ramps, sidewalks, and driveways throughout the City's public right-of-way. This section describes each type of facility evaluated and summarizes the barrier findings.

The first part of the summary for each type of facility has two parts:

- A graphic showing Geospatial Proximity Priorities by category; and
- Descriptions of the barrier categorizations.

The second part includes:

- Summary tables of the identified barriers; and
- Maps showing the locations of identified barriers.

3.2 Public Rights-of-Way Prioritization

Draft prioritization criteria for assigning the barrier removal phasing schedule has been developed. Under Title II Regulation § 35.150(d)(2) the criteria for prioritizing barriers within the public rights-of way are identified.

If a public entity has responsibility or authority over streets, roads, or walkways, its transition plan shall include a schedule for providing curb ramps or other sloped areas where pedestrian walks cross curbs, giving priority to walkways serving entities covered by the Act, including State and local government offices and facilities, transportation, places of public accommodation, and employers, followed by walkways serving other areas.

The draft prioritization criteria include the following:

- Location of citizen complaint/request (ADA Title II Program Access);
- Locations serving government offices and public facilities;
- Locations serving transportation;
- Locations serving commercial districts and employers; and
- Locations serving other areas.

3.3 Priorities for Barrier Removal

Matrices on the following pages illustrate the prioritization criteria for curb ramp, sidewalk, and driveway barrier removal projects in the City's public right-of-way. Each facility evaluated is assigned a rank based on its barrier priority and category. The priority assigned is based on the information described in section 3.2 and the barrier category is based on the condition of the facility. The descriptions for each category are provided after each of the tables.

The highest ranked facilities are shaded in red, medium ranked in orange, and lower ranked in yellow. The facilities with no assigned rank have no access deficiencies identified and are shaded blue. The columns in the matrix indicate the assigned priority and are in order of importance from left to right, with the left column having the highest importance. The rows indicate the category of condition assigned to each facility during the evaluation process, with the top row having the highest importance. Note that categories are hierarchical: higher level categories (i.e. one and two) may include lower level category conditions (i.e. three and four), but lower level categories cannot include higher level category conditions.

Curb Ramps

		ADA 35.150(d) Geospatial Proximity Priorities*				
		A	B	C	D	E
Priorities (Category)	Priority Description	Location of Citizen Complaint / Request (ADA Title II Program Access)	Location Serving Government Offices & Public Facilities	Location Serving Transportation	Location Serving Commercial Districts, Employers	Location Serving Other Areas
1	See Category 1 Description	A1 High Priority	B1	C1	D1	E1
2	See Category 2 Description	A2	B2	C2	D2 Medium Priority	E2
3	See Category 3 Description	A3	B3	C3	D3	E3
4	See Category 4 Description	A4	B4	C4	D4 Low Priority	E4
5	No deficiencies identified	A5	B5	C5	D5	E5

*The priorities listed under columns B, C, D, and E are specified under Title II 28 CFR Section 35.150 (d)

Curb Ramp Barrier Descriptions

Category 1:

- The curb ramp is significantly damaged or deteriorated and is unsafe.
- There is no accessible path of travel to the curb ramp.
- The curb ramp has no detectable warning.
- The curb ramp has no receiving ramp.
- The curb ramp has no design specifications for end of sidewalk or is an asphalt shoulder adjacent to locations serving government offices and public facilities.

Category 2:

- Barrier located along a freeway and/or expressway or a major arterial:
 - Width of ramp is less than 48 inches.
 - Running slope of ramp exceeds 8.33 percent or five percent for a blended transition.
 - There is a grade break on the surface of the ramp.
 - A four-by-four-foot clear space at the bottom of the ramp outside of the travel lane is not provided.
 - The curb ramp has no design specifications for end of sidewalk or is an asphalt shoulder adjacent to locations serving transportation.

Category 3:

- Top turning space is less than four-by-four feet or constrained space is less than four-by-five feet or slope exceeds two percent.
- Cross slope of ramp exceeds two percent.
- Counter slope of the curb ramp is greater than five percent.

Category 3, continued:

- The curb ramp has a lip or vertical discontinuity greater than a half-inch.
- The curb ramp has no design specifications for end of sidewalk or is an asphalt shoulder adjacent to locations serving commercial districts and employers.
- Barrier located along minor arterial or local road:
 - Width of ramp is less than 48 inches.
 - Running slope of ramp exceeds 8.33 percent or five percent for a blended transition.
 - There is a grade break on the surface of the ramp.
 - A four-by-four-foot clear space at the bottom of the ramp outside of the travel lane is not provided.
 - The curb ramp has no design specifications for end of sidewalk or is an asphalt shoulder adjacent to locations serving transportation.

Category 4:

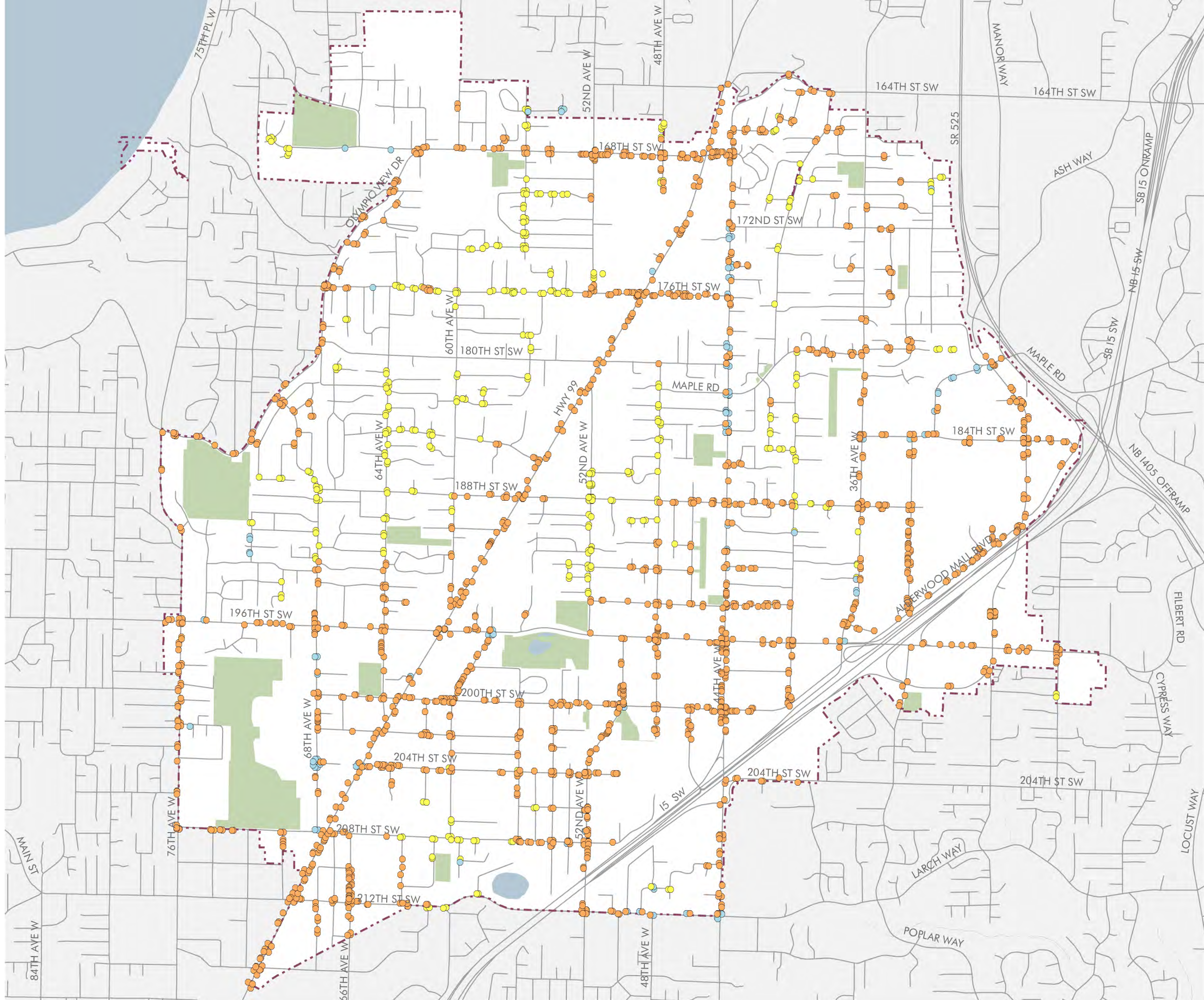
- Slope of ramp flared sides (if applicable) exceeds 10 percent.
- Diagonal curb ramp design without existing physical constraints.
- The curb ramp has a lip or vertical discontinuity less than a half-inch but greater than a quarter-inch.
- The detectable warning surface does not meet standard.
- The curb ramp has no design specifications for end of sidewalk or is an asphalt shoulder adjacent to locations serving other areas.

Category 5:

- No deficiencies identified.

This page intentionally left blank.

Curb Ramp Barrier Removal Projects Medium & Low Priority



Barrier Removal Rank

- Medium Priority
- Low Priority
- No Deficiencies Identified

Context

- City Limits
- Water Feature
- Streets
- Park

DRAFT

2.20.2018



This page intentionally left blank.

Table 7. Curb Ramp Barrier Summary

Category	Priority	Total Instances	Percent Total	Schedule Year
High Priority				
1	B1	38	1.3%	TBD
1	C1	370	12.8%	TBD
1	D1	19	0.7%	TBD
1	E1	98	3.4%	TBD
2	B2	8	0.3%	TBD
2	C2	251	8.7%	TBD
3	B3	129	4.5%	TBD
Subtotal		913	31.5%	
Medium Priority				
3	C3	1427	49.3%	TBD
3	D3	71	2.5%	TBD
4	B4	3	0.1%	TBD
4	C4	37	1.3%	TBD
Subtotal		1538	53.1%	
Low Priority				
3	E3	332	11.5%	TBD
4	D4	1	0.0%	TBD
4	E4	6	0.2%	TBD
Subtotal		339	11.7%	
No Deficiencies				
5	B5	10	0.3%	-
5	C5	82	2.8%	-
5	E5	15	0.5%	-
Subtotal		107	3.7%	-
Total for All Projects		2,897	100%	-

Table 8. Curb Ramp Barrier Summary by Barrier Type

Barrier Removal Action(s)	Total Instances	Percent Total
No deficiencies identified	107	3.69%
Diagonal curb ramp. Install two curb ramps	59	2.04%
Diagonal curb ramp. Install two curb ramps, Install receiving ramp	1	0.03%
Diagonal curb ramp. Install two curb ramps, Provide accessible path of travel	2	0.07%
Diagonal curb ramp. Install two curb ramps, Provide accessible path of travel, Replace or provide detectable warning	1	0.03%
Diagonal curb ramp. Install two curb ramps, Provide turning space	1	0.03%
Diagonal curb ramp. Install two curb ramps, Relocate crossing or curb markings	1	0.03%
Diagonal curb ramp. Install two curb ramps, Replace or provide detectable warning, Relocate crossing or curb markings	1	0.03%
Install receiving ramp	3	0.10%
Install receiving ramp, Provide turning space, Relocate crossing or curb markings	1	0.03%
Install receiving ramp, Relocate crossing or curb markings	1	0.03%
Provide accessible path of travel	20	0.69%
Provide accessible path of travel, Grind or patch vertical discontinuity	1	0.03%
Provide accessible path of travel, Install receiving ramp	1	0.03%
Provide accessible path of travel, Relocate crossing or curb markings	6	0.21%
Provide accessible path of travel, Replace or provide detectable warning	24	0.83%
Provide accessible path of travel, Replace or provide detectable warning, Provide turning space, Relocate crossing or curb markings	1	0.41%
Provide accessible path of travel, Replace or provide detectable warning, Relocate crossing or curb markings	6	0.21%
Provide turning space, Relocate crossing or curb markings	4	0.14%
Relocate crossing or curb markings	22	0.76%
Replace curb ramp	2142	73.94%
Replace curb ramp, Install receiving ramp	121	4.18%
Replace curb ramp, Provide accessible path of travel	1	0.03%
Replace curb ramp, Provide accessible path of travel, Replace or provide detectable warning	5	0.17%

Barrier Removal Action(s)	Total Instances	Percent Total
Replace curb ramp, Provide accessible path of travel, Replace or provide detectable warning, Provide turning space	2	0.07%
Replace curb ramp, Provide accessible path of travel, Replace or provide detectable warning, Provide turning space, Relocate crossing or curb markings	1	0.03%
Replace curb ramp, Provide accessible path of travel, Replace or provide detectable warning, Relocate crossing or curb markings	2	0.07%
Replace curb ramp, Relocate crossing or curb markings	1	0.03%
Replace curb ramp, Replace or provide detectable warning	34	1.17%
Replace curb ramp, Replace or provide detectable warning, Grind or patch vertical discontinuity, Relocate crossing or curb markings	1	0.03%
Replace curb ramp, Replace or provide detectable warning, Install receiving ramp	1	0.03%
Replace curb ramp, Replace or provide detectable warning, Provide turning space	3	0.10%
Replace curb ramp, Replace or provide detectable warning, Provide turning space, Relocate crossing or curb markings	8	0.28%
Replace curb ramp, Replace or provide detectable warning, Relocate crossing or curb markings	3	0.10%
Replace or provide detectable warning	261	9.01%
Replace or provide detectable warning, Grind or patch vertical discontinuity	4	0.14%
Replace or provide detectable warning, Install receiving ramp	3	0.10%
Replace or provide detectable warning, Install receiving ramp, Grind or patch vertical discontinuity	1	0.03%
Replace or provide detectable warning, Install receiving ramp, Provide turning space, Relocate crossing or curb markings	1	0.03%
Replace or provide detectable warning, Install receiving ramp, Relocate crossing or curb markings	3	0.10%
Replace or provide detectable warning, Provide turning space	6	0.21%
Replace or provide detectable warning, Provide turning space, Relocate crossing or curb markings	2	0.07%
Replace or provide detectable warning, Relocate crossing or curb markings	19	0.66%
TBD - No existing design specifications for end of sidewalk	3	0.10%
TBD - No existing design specifications for end of sidewalk, Install receiving ramp	4	0.14%

Barrier Removal Action(s)	Total Instances	Percent Total
TBD - No existing design specifications for end of sidewalk, Replace or provide detectable warning	1	0.03%
TBD - No existing design specifications for end of sidewalk, Replace or provide detectable warning, Relocate crossing or curb markings	1	0.03%
Total for All Projects	2,897	100%

Table 9. Curb Ramp Barrier Summary by Rank

Barrier Removal Action(s)	Total Instances	Percent Total
High Priority		
Diagonal curb ramp. Install two curb ramps	9	0.31%
Diagonal curb ramp. Install two curb ramps, Install receiving ramp	1	0.03%
Diagonal curb ramp. Install two curb ramps, Provide accessible path of travel, Replace or provide detectable warning	1	0.03%
Diagonal curb ramp. Install two curb ramps, Replace or provide detectable warning, Relocate crossing or curb markings	1	0.03%
Install receiving ramp	3	0.10%
Install receiving ramp, Provide turning space, Relocate crossing or curb markings	1	0.03%
Install receiving ramp, Relocate crossing or curb markings	1	0.03%
Provide accessible path of travel	3	0.10%
Provide accessible path of travel, Install receiving ramp	1	0.03%
Provide accessible path of travel, Relocate crossing or curb markings	1	0.03%
Provide accessible path of travel, Replace or provide detectable warning	21	0.72%
Provide accessible path of travel, Replace or provide detectable warning, Provide turning space, Relocate crossing or curb markings	1	0.03%
Provide accessible path of travel, Replace or provide detectable warning, Relocate crossing or curb markings	5	0.17%
Relocate crossing or curb markings	3	0.10%
Replace curb ramp	394	13.60%
Replace curb ramp, Install receiving ramp	121	4.18%
Replace curb ramp, Provide accessible path of travel	1	0.03%
Replace curb ramp, Provide accessible path of travel, Replace or provide detectable warning	5	0.17%
Replace curb ramp, Provide accessible path of travel, Replace or provide detectable warning, Provide turning space	2	0.07%
Replace curb ramp, Provide accessible path of travel, Replace or provide detectable warning, Provide turning space, Relocate crossing or curb markings	1	0.03%

Barrier Removal Action(s)	Total Instances	Percent Total
Replace curb ramp, Provide accessible path of travel, Replace or provide detectable warning, Relocate crossing or curb markings	2	0.07%
Replace curb ramp, Replace or provide detectable warning	31	1.07%
Replace curb ramp, Replace or provide detectable warning, Grind or patch vertical discontinuity, Relocate crossing or curb markings	1	0.03%
Replace curb ramp, Replace or provide detectable warning, Install receiving ramp	1	0.03%
Replace curb ramp, Replace or provide detectable warning, Provide turning space	3	0.10%
Replace curb ramp, Replace or provide detectable warning, Provide turning space, Relocate crossing or curb markings	8	0.28%
Replace curb ramp, Replace or provide detectable warning, Relocate crossing or curb markings	3	0.10%
Replace or provide detectable warning	246	8.49%
Replace or provide detectable warning, Grind or patch vertical discontinuity	4	0.14%
Replace or provide detectable warning, Install receiving ramp	3	0.10%
Replace or provide detectable warning, Install receiving ramp, Grind or patch vertical discontinuity	1	0.03%
Replace or provide detectable warning, Install receiving ramp, Provide turning space, Relocate crossing or curb markings	1	0.03%
Replace or provide detectable warning, Install receiving ramp, Relocate crossing or curb markings	3	0.10%
Replace or provide detectable warning, Provide turning space	6	0.21%
Replace or provide detectable warning, Provide turning space, Relocate crossing or curb markings	2	0.07%
Replace or provide detectable warning, Relocate crossing or curb markings	17	0.59%
TBD - No existing design specifications for end of sidewalk, Install receiving ramp	4	0.14%
TBD - No existing design specifications for end of sidewalk, Replace or provide detectable warning, Relocate crossing or curb markings	1	0.03%
Subtotal	913	32%
Medium Priority		
Diagonal curb ramp. Install two curb ramps	34	1.17%
Diagonal curb ramp. Install two curb ramps, Provide accessible path of travel	2	0.07%
Diagonal curb ramp. Install two curb ramps, Provide turning space	1	0.03%
Diagonal curb ramp. Install two curb ramps, Relocate crossing or curb markings	1	0.03%

Barrier Removal Action(s)	Total Instances	Percent Total
Provide accessible path of travel	13	0.45%
Provide accessible path of travel, Grind or patch vertical discontinuity	1	0.03%
Provide accessible path of travel, Relocate crossing or curb markings	5	0.17%
Provide accessible path of travel, Replace or provide detectable warning	2	0.07%
Provide accessible path of travel, Replace or provide detectable warning, Relocate crossing or curb markings	1	0.03%
Provide turning space, Relocate crossing or curb markings	4	0.14%
Relocate crossing or curb markings	14	0.48%
Replace curb ramp	1437	49.60%
Replace curb ramp, Replace or provide detectable warning	3	0.10%
Replace or provide detectable warning	14	0.48%
Replace or provide detectable warning, Relocate crossing or curb markings	2	0.07%
TBD - No existing design specifications for end of sidewalk	3	0.10%
TBD - No existing design specifications for end of sidewalk, Replace or provide detectable warning	1	0.03%
Subtotal	1538	53%
Low Priority		
Diagonal curb ramp. Install two curb ramps	16	0.55%
Provide accessible path of travel	4	0.14%
Provide accessible path of travel, Replace or provide detectable warning	1	0.03%
Relocate crossing or curb markings	5	0.17%
Replace curb ramp	311	10.74%
Replace curb ramp, Relocate crossing or curb markings	1	0.03%
Replace or provide detectable warning	1	0.03%
Subtotal	339	12%
No Deficiencies Identified		
No deficiencies	107	3.69%
Subtotal	107	4%
Total for All Projects	2,897	100%

This page intentionally left blank

Sidewalks

		ADA 35.150(d) Geospatial Proximity Priorities*				
		A	B	D	E	F
Priorities (Category)	Priority Description	Location of Citizen Complaint / Request (ADA Title II Program Access)	Location Serving Government Offices & Public Facilities	Location Serving Transportation	Location Serving Commercial Districts, Employers	Location Serving Other Areas
1	See Category 1 Description	A1 High Priority	B1	C1	D1	E1
2	See Category 2 Description	A2	B2	C2	D2	E2
3	See Category 3 Description	A3	B3 Medium Priority	C3	D3	E3
4	See Category 4 Description	A4	B4 Low Priority	C4	D4	E4
5	No deficiencies identified	A5	B5	C5	D5	E5

*The priorities listed under columns B, C, D, and E are specified under Title II 28 CFR Section 35.150 (d)

Sidewalk Barrier Descriptions

Category 1:

- The sidewalk width is less than 48 inches.

Category 2:

- Barrier located along a freeway and/or expressway or a major arterial:
 - Running slope of sidewalk exceeds grade of road and is greater than five percent.
 - The sidewalk has cross slopes that exceed two percent more than half the sidewalk segment.
 - The sidewalk cross slope at driveway entries exceeds two percent.
 - The sidewalk has a significant number of vertical changes that exceed a quarter inch **–and–** openings greater than a half inch or are parallel to direction of travel (more than one per 100 feet).

Category 3:

- Barrier located along a minor arterial or local road:
 - Running slope of sidewalk exceeds grade of road and is greater than five percent.
 - The sidewalk has cross slopes that exceed two percent more than half the sidewalk segment.
 - The sidewalk cross slope at driveway entries exceeds two percent.

Category 3, continued:

- The sidewalk has a significant number of vertical changes that exceed a quarter inch **–and–** openings greater than a half inch or are parallel to direction of travel (more than one per 100 feet).

Category 4:

- The sidewalk has cross slopes that exceed two percent less than half the sidewalk segment.
- The sidewalk has a significant number of vertical changes that exceed a quarter inch **–or–** openings greater than a half inch (more than one per 100 feet), but not both.
- The sidewalk has overhanging or protruding objects along its route.

Category 5:

- No deficiencies identified.

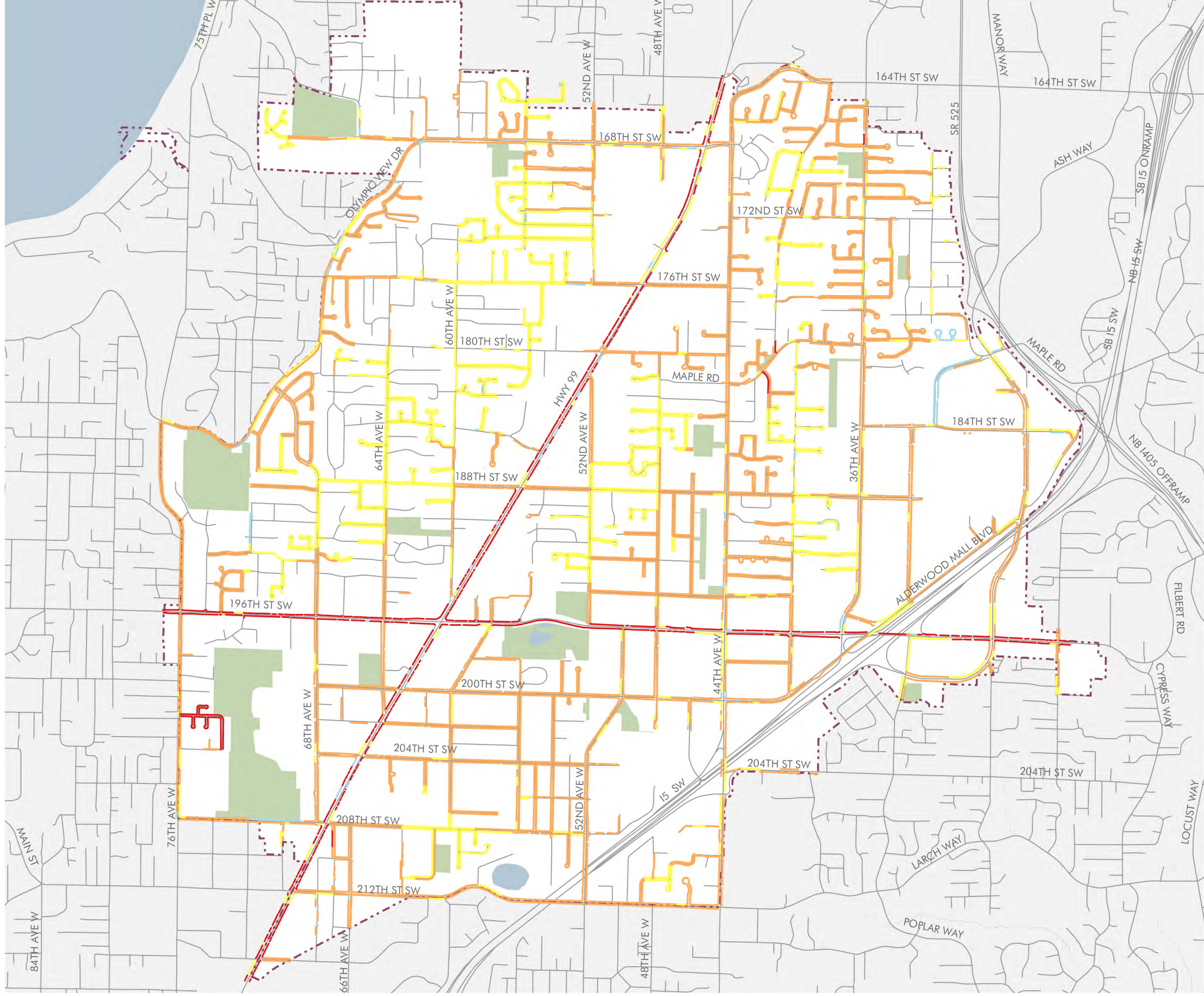
Sidewalk Barrier Removal Projects

Barrier Removal Rank

- High Priority
- Medium Priority
- Low Priority
- No Deficiencies Identified

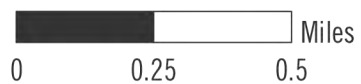
Context

- City Limits
- Water Feature
- Streets
- Park



DRAFT

2.20.2018



This page intentionally left blank.

Table 10. Sidewalk Barrier Summary

Category	Priority	Total Miles	Percent Total	Schedule Year
High Priority				
1	B1	0.34	0.24%	TBD
1	C1	0.71	0.52%	TBD
2	B2	0.99	0.72%	TBD
2	C2	8.05	5.86%	TBD
Subtotal		10	7.3%	-
Medium Priority				
3	B3	10.19	7.41%	TBD
3	C3	69.58	50.61%	TBD
3	D3	3.20	2.32%	TBD
Subtotal		83	60.4%	-
Low Priority				
3	E3	31.93	23.23%	TBD
4	B4	0.86	0.62%	TBD
4	C4	7.45	5.42%	TBD
4	D4	0.24	0.17%	TBD
4	E4	0.99	0.72%	TBD
Subtotal		41.47	30.16%	-
No Deficiencies				
5	B5	0.47	0.34%	n/a
5	C5	1.74	1.27%	n/a
5	D5	0.04	0.03%	n/a
5	E5	0.70	0.51%	n/a
Subtotal		3	2.2%	-
Total for All Projects		137	100%	-

Table 11. Sidewalk Barrier Summary by Barrier Type

Barrier Removal Action(s)	Total Miles	Percent Total
No deficiencies identified	2.95	2.15%
Grind or patch vertical change of grade	0.53	0.38%
Grind or patch vertical change of grade, Reduce opening - and/or - Reorient grate opening and/or replace type of grate	0.22	0.16%
Grind or patch vertical change of grade, Reduce opening - and/or - Reorient grate opening and/or replace type of grate, Remove or move object reducing sidewalk width	0.03	0.03%
Grind or patch vertical change of grade, Reduce opening - and/or - Reorient grate opening and/or replace type of grate, Remove or move object reducing sidewalk width, Replace walk and regrade driveway	0.23	0.17%
Grind or patch vertical change of grade, Reduce opening - and/or - Reorient grate opening and/or replace type of grate, Replace walk and regrade driveway	0.14	0.10%
Grind or patch vertical change of grade, Regrade sidewalk	6.37	4.64%
Grind or patch vertical change of grade, Regrade sidewalk, Reduce opening - and/or - Reorient grate opening and/or replace type of grate	2.09	1.52%
Grind or patch vertical change of grade, Regrade sidewalk, Reduce opening - and/or - Reorient grate opening and/or replace type of grate, Remove or move object reducing sidewalk width	0.37	0.27%
Grind or patch vertical change of grade, Regrade sidewalk, Reduce opening - and/or - Reorient grate opening and/or replace type of grate, Remove or move object reducing sidewalk width, Replace walk and regrade driveway	4.19	3.05%
Grind or patch vertical change of grade, Regrade sidewalk, Reduce opening - and/or - Reorient grate opening and/or replace type of grate, Replace walk and regrade driveway	3.98	2.90%
Grind or patch vertical change of grade, Regrade sidewalk, Remove or move object reducing sidewalk width	0.96	0.70%
Grind or patch vertical change of grade, Regrade sidewalk, Remove or move object reducing sidewalk width, Replace walk and regrade driveway	4.68	3.41%
Grind or patch vertical change of grade, Regrade sidewalk, Remove overhanging or protruding object	3.01	2.19%
Grind or patch vertical change of grade, Regrade sidewalk, Remove overhanging or protruding object, Reduce opening - and/or - Reorient grate opening and/or replace type of grate	2.09	1.52%

Barrier Removal Action(s)	Total Miles	Percent Total
Grind or patch vertical change of grade, Regrade sidewalk, Remove overhanging or protruding object, Reduce opening - and/or - Reorient grate opening and/or replace type of grate, Remove or move object reducing sidewalk width	0.87	0.64%
Grind or patch vertical change of grade, Regrade sidewalk, Remove overhanging or protruding object, Reduce opening - and/or - Reorient grate opening and/or replace type of grate, Remove or move object reducing sidewalk width, Replace walk and regrade driveway	16.70	12.15%
Grind or patch vertical change of grade, Regrade sidewalk, Remove overhanging or protruding object, Reduce opening - and/or - Reorient grate opening and/or replace type of grate, Replace walk and regrade driveway	6.32	4.60%
Grind or patch vertical change of grade, Regrade sidewalk, Remove overhanging or protruding object, Remove or move object reducing sidewalk width	1.67	1.21%
Grind or patch vertical change of grade, Regrade sidewalk, Remove overhanging or protruding object, Remove or move object reducing sidewalk width, Replace walk and regrade driveway	17.69	12.87%
Grind or patch vertical change of grade, Regrade sidewalk, Remove overhanging or protruding object, Replace walk and regrade driveway	7.37	5.36%
Grind or patch vertical change of grade, Regrade sidewalk, Replace walk and regrade driveway	7.66	5.57%
Grind or patch vertical change of grade, Remove or move object reducing sidewalk width	0.02	0.01%
Grind or patch vertical change of grade, Remove or move object reducing sidewalk width, Replace walk and regrade driveway	0.34	0.25%
Grind or patch vertical change of grade, Remove overhanging or protruding object	0.11	0.08%
Grind or patch vertical change of grade, Remove overhanging or protruding object, Reduce opening - and/or - Reorient grate opening and/or replace type of grate	0.10	0.07%
Grind or patch vertical change of grade, Remove overhanging or protruding object, Reduce opening - and/or - Reorient grate opening and/or replace type of grate, Remove or move object reducing sidewalk width	0.09	0.07%
Grind or patch vertical change of grade, Remove overhanging or protruding object, Reduce opening - and/or - Reorient grate opening and/or replace type of grate, Remove or move object reducing sidewalk width, Replace walk and regrade driveway	0.52	0.38%
Grind or patch vertical change of grade, Remove overhanging or protruding object, Reduce opening - and/or - Reorient grate opening and/or replace type of grate, Replace walk and regrade driveway	0.12	0.09%
Grind or patch vertical change of grade, Remove overhanging or protruding object, Remove or move object reducing sidewalk width	0.16	0.11%

Barrier Removal Action(s)	Total Miles	Percent Total
Grind or patch vertical change of grade, Remove overhanging or protruding object, Remove or move object reducing sidewalk width, Replace walk and regrade driveway	0.55	0.40%
Grind or patch vertical change of grade, Remove overhanging or protruding object, Replace walk and regrade driveway	1.05	0.76%
Grind or patch vertical change of grade, Replace walk and regrade driveway	0.26	0.19%
Reduce opening - and/or - Reorient grate opening and/or replace type of grate	0.10	0.07%
Reduce opening - and/or - Reorient grate opening and/or replace type of grate, Replace walk and regrade driveway	0.18	0.13%
Regrade sidewalk	9.08	6.61%
Regrade sidewalk, Reduce opening - and/or - Reorient grate opening and/or replace type of grate	1.24	0.90%
Regrade sidewalk, Reduce opening - and/or - Reorient grate opening and/or replace type of grate, Remove or move object reducing sidewalk width	0.14	0.10%
Regrade sidewalk, Reduce opening - and/or - Reorient grate opening and/or replace type of grate, Remove or move object reducing sidewalk width, Replace walk and regrade driveway	1.27	0.92%
Regrade sidewalk, Reduce opening - and/or - Reorient grate opening and/or replace type of grate, Replace walk and regrade driveway	1.54	1.12%
Regrade sidewalk, Remove or move object reducing sidewalk width	0.96	0.70%
Regrade sidewalk, Remove or move object reducing sidewalk width, Replace walk and regrade driveway	2.18	1.58%
Regrade sidewalk, Remove overhanging or protruding object	1.87	1.36%
Regrade sidewalk, Remove overhanging or protruding object, Reduce opening - and/or - Reorient grate opening and/or replace type of grate	0.41	0.30%
Regrade sidewalk, Remove overhanging or protruding object, Reduce opening - and/or - Reorient grate opening and/or replace type of grate, Remove or move object reducing sidewalk width	0.15	0.11%
Regrade sidewalk, Remove overhanging or protruding object, Reduce opening - and/or - Reorient grate opening and/or replace type of grate, Remove or move object reducing sidewalk width, Replace walk and regrade driveway	0.82	0.60%
Regrade sidewalk, Remove overhanging or protruding object, Reduce opening - and/or - Reorient grate opening and/or replace type of grate, Replace walk and regrade driveway	0.76	0.55%
Regrade sidewalk, Remove overhanging or protruding object, Remove or move object reducing sidewalk width	1.17	0.85%

Barrier Removal Action(s)	Total Miles	Percent Total
Regrade sidewalk, Remove overhanging or protruding object, Remove or move object reducing sidewalk width, Replace walk and regrade driveway	3.63	2.64%
Regrade sidewalk, Remove overhanging or protruding object, Replace walk and regrade driveway	3.63	2.64%
Regrade sidewalk, Replace walk and regrade driveway	7.89	5.74%
Remove or move object reducing sidewalk width	0.46	0.33%
Remove or move object reducing sidewalk width, Replace walk and regrade driveway	0.45	0.32%
Remove overhanging or protruding object	0.54	0.39%
Remove overhanging or protruding object, Reduce opening - and/or - Reorient grate opening and/or replace type of grate	0.02	0.01%
Remove overhanging or protruding object, Reduce opening - and/or - Reorient grate opening and/or replace type of grate, Remove or move object reducing sidewalk width, Replace walk and regrade driveway	0.23	0.17%
Remove overhanging or protruding object, Reduce opening - and/or - Reorient grate opening and/or replace type of grate, Replace walk and regrade driveway	0.05	0.04%
Remove overhanging or protruding object, Remove or move object reducing sidewalk width	0.12	0.09%
Remove overhanging or protruding object, Remove or move object reducing sidewalk width, Replace walk and regrade driveway	0.72	0.52%
Remove overhanging or protruding object, Replace walk and regrade driveway	0.74	0.54%
Replace walk and regrade driveway	2.60	1.89%
Widen/rebuild sidewalk, Grind or patch vertical change of grade, Reduce opening - and/or - Reorient grate opening and/or replace type of grate, Replace walk and regrade driveway	0.04	0.03%
Widen/rebuild sidewalk, Grind or patch vertical change of grade, Regrade sidewalk, Reduce opening - and/or - Reorient grate opening and/or replace type of grate, Replace walk and regrade driveway	0.08	0.06%
Widen/rebuild sidewalk, Grind or patch vertical change of grade, Regrade sidewalk, Remove or move object reducing sidewalk width	0.02	0.02%
Widen/rebuild sidewalk, Grind or patch vertical change of grade, Regrade sidewalk, Remove overhanging or protruding object, Reduce opening - and/or - Reorient grate opening and/or replace type of grate, Remove or move object reducing sidewalk width, Replace walk and regrade driveway	0.11	0.08%
Widen/rebuild sidewalk, Grind or patch vertical change of grade, Regrade sidewalk, Remove overhanging or protruding object, Remove or move object reducing sidewalk width, Replace walk and regrade driveway	0.05	0.03%

Barrier Removal Action(s)	Total Miles	Percent Total
Widen/rebuild sidewalk, Grind or patch vertical change of grade, Regrade sidewalk, Replace walk and regrade driveway	0.06	0.04%
Widen/rebuild sidewalk, Grind or patch vertical change of grade, Remove or move object reducing sidewalk width, Replace walk and regrade driveway	0.08	0.06%
Widen/rebuild sidewalk, Grind or patch vertical change of grade, Remove overhanging or protruding object, Remove or move object reducing sidewalk width, Replace walk and regrade driveway	0.12	0.09%
Widen/rebuild sidewalk, Grind or patch vertical change of grade, Remove overhanging or protruding object, Replace walk and regrade driveway	0.14	0.10%
Widen/rebuild sidewalk, Regrade sidewalk, Remove or move object reducing sidewalk width, Replace walk and regrade driveway	0.05	0.03%
Widen/rebuild sidewalk, Regrade sidewalk, Remove overhanging or protruding object, Remove or move object reducing sidewalk width	0.04	0.03%
Widen/rebuild sidewalk, Regrade sidewalk, Remove overhanging or protruding object, Remove or move object reducing sidewalk width, Replace walk and regrade driveway	0.01	0.01%
Widen/rebuild sidewalk, Regrade sidewalk, Remove overhanging or protruding object, Replace walk and regrade driveway	0.04	0.03%
Widen/rebuild sidewalk, Regrade sidewalk, Replace walk and regrade driveway	0.01	0.01%
Widen/rebuild sidewalk, Remove or move object reducing sidewalk width, Replace walk and regrade driveway	0.08	0.05%
Widen/rebuild sidewalk, Remove overhanging or protruding object, Remove or move object reducing sidewalk width, Replace walk and regrade driveway	0.05	0.03%
Widen/rebuild sidewalk, Replace walk and regrade driveway	0.07	0.05%
Total for All Projects	137	100%

Table 12. Sidewalk Barrier Summary by Rank

Barrier Removal Action(s)	Total Miles	Percent Total
High Priority		
Grind or patch vertical change of grade, Reduce opening - and/or - Reorient grate opening and/or replace type of grate, Replace walk and regrade driveway	0.06	0.04%
Grind or patch vertical change of grade, Regrade sidewalk	0.72	0.52%
Grind or patch vertical change of grade, Regrade sidewalk, Reduce opening - and/or - Reorient grate opening and/or replace type of grate	0.11	0.08%
Grind or patch vertical change of grade, Regrade sidewalk, Reduce opening - and/or - Reorient grate opening and/or replace type of grate, Remove or move object reducing sidewalk width, Replace walk and regrade driveway	0.03	0.02%
Grind or patch vertical change of grade, Regrade sidewalk, Reduce opening - and/or - Reorient grate opening and/or replace type of grate, Replace walk and regrade driveway	0.33	0.24%
Grind or patch vertical change of grade, Regrade sidewalk, Remove or move object reducing sidewalk width, Replace walk and regrade driveway	0.12	0.09%
Grind or patch vertical change of grade, Regrade sidewalk, Remove overhanging or protruding object	0.32	0.23%
Grind or patch vertical change of grade, Regrade sidewalk, Remove overhanging or protruding object, Reduce opening - and/or - Reorient grate opening and/or replace type of grate	0.17	0.12%
Grind or patch vertical change of grade, Regrade sidewalk, Remove overhanging or protruding object, Reduce opening - and/or - Reorient grate opening and/or replace type of grate, Remove or move object reducing sidewalk width, Replace walk and regrade driveway	0.27	0.20%
Grind or patch vertical change of grade, Regrade sidewalk, Remove overhanging or protruding object, Reduce opening - and/or - Reorient grate opening and/or replace type of grate, Replace walk and regrade driveway	0.25	0.18%
Grind or patch vertical change of grade, Regrade sidewalk, Remove overhanging or protruding object, Remove or move object reducing sidewalk width	0.25	0.18%
Grind or patch vertical change of grade, Regrade sidewalk, Remove overhanging or protruding object, Remove or move object reducing sidewalk width, Replace walk and regrade driveway	0.04	0.03%
Grind or patch vertical change of grade, Regrade sidewalk, Remove overhanging or protruding object, Replace walk and regrade driveway	0.49	0.35%
Grind or patch vertical change of grade, Regrade sidewalk, Replace walk and regrade driveway	1.41	1.02%

Barrier Removal Action(s)	Total Miles	Percent Total
Grind or patch vertical change of grade, Remove overhanging or protruding object, Reduce opening - and/or - Reorient grate opening and/or replace type of grate, Replace walk and regrade driveway	0.04	0.03%
Grind or patch vertical change of grade, Replace walk and regrade driveway	0.15	0.11%
Reduce opening - and/or - Reorient grate opening and/or replace type of grate, Replace walk and regrade driveway	0.02	0.01%
Regrade sidewalk	1.49	1.08%
Regrade sidewalk, Reduce opening - and/or - Reorient grate opening and/or replace type of grate	0.05	0.04%
Regrade sidewalk, Reduce opening - and/or - Reorient grate opening and/or replace type of grate, Replace walk and regrade driveway	0.12	0.09%
Regrade sidewalk, Remove or move object reducing sidewalk width	0.02	0.01%
Regrade sidewalk, Remove or move object reducing sidewalk width, Replace walk and regrade driveway	0.01	0.01%
Regrade sidewalk, Remove overhanging or protruding object	0.18	0.13%
Regrade sidewalk, Remove overhanging or protruding object, Reduce opening - and/or - Reorient grate opening and/or replace type of grate, Replace walk and regrade driveway	0.03	0.02%
Regrade sidewalk, Remove overhanging or protruding object, Remove or move object reducing sidewalk width, Replace walk and regrade driveway	0.05	0.03%
Regrade sidewalk, Remove overhanging or protruding object, Replace walk and regrade driveway	0.18	0.13%
Regrade sidewalk, Replace walk and regrade driveway	1.50	1.09%
Remove overhanging or protruding object, Replace walk and regrade driveway	0.07	0.05%
Replace walk and regrade driveway	0.59	0.43%
Widen/rebuild sidewalk, Grind or patch vertical change of grade, Reduce opening - and/or - Reorient grate opening and/or replace type of grate, Replace walk and regrade driveway	0.04	0.03%
Widen/rebuild sidewalk, Grind or patch vertical change of grade, Regrade sidewalk, Reduce opening - and/or - Reorient grate opening and/or replace type of grate, Replace walk and regrade driveway	0.08	0.06%
Widen/rebuild sidewalk, Grind or patch vertical change of grade, Regrade sidewalk, Remove or move object reducing sidewalk width	0.02	0.02%
Widen/rebuild sidewalk, Grind or patch vertical change of grade, Regrade sidewalk, Remove overhanging or protruding object, Reduce opening - and/or - Reorient grate opening and/or replace type of grate, Remove or move object reducing sidewalk width, Replace walk and regrade driveway	0.11	0.08%

Barrier Removal Action(s)	Total Miles	Percent Total
Widen/rebuild sidewalk, Grind or patch vertical change of grade, Regrade sidewalk, Remove overhanging or protruding object, Remove or move object reducing sidewalk width, Replace walk and regrade driveway	0.05	0.03%
Widen/rebuild sidewalk, Grind or patch vertical change of grade, Regrade sidewalk, Replace walk and regrade driveway	0.06	0.04%
Widen/rebuild sidewalk, Grind or patch vertical change of grade, Remove or move object reducing sidewalk width, Replace walk and regrade driveway	0.08	0.06%
Widen/rebuild sidewalk, Grind or patch vertical change of grade, Remove overhanging or protruding object, Remove or move object reducing sidewalk width, Replace walk and regrade driveway	0.12	0.09%
Widen/rebuild sidewalk, Grind or patch vertical change of grade, Remove overhanging or protruding object, Replace walk and regrade driveway	0.14	0.10%
Widen/rebuild sidewalk, Regrade sidewalk, Remove or move object reducing sidewalk width, Replace walk and regrade driveway	0.05	0.03%
Widen/rebuild sidewalk, Regrade sidewalk, Remove overhanging or protruding object, Remove or move object reducing sidewalk width	0.04	0.03%
Widen/rebuild sidewalk, Regrade sidewalk, Remove overhanging or protruding object, Remove or move object reducing sidewalk width, Replace walk and regrade driveway	0.01	0.01%
Widen/rebuild sidewalk, Regrade sidewalk, Remove overhanging or protruding object, Replace walk and regrade driveway	0.04	0.03%
Widen/rebuild sidewalk, Regrade sidewalk, Replace walk and regrade driveway	0.01	0.01%
Widen/rebuild sidewalk, Remove or move object reducing sidewalk width, Replace walk and regrade driveway	0.08	0.05%
Widen/rebuild sidewalk, Remove overhanging or protruding object, Remove or move object reducing sidewalk width, Replace walk and regrade driveway	0.05	0.03%
Widen/rebuild sidewalk, Replace walk and regrade driveway	0.07	0.05%
Subtotal	10	7%
Medium Priority		
Grind or patch vertical change of grade, Reduce opening - and/or - Reorient grate opening and/or replace type of grate	0.17	0.12%

Barrier Removal Action(s)	Total Miles	Percent Total
Grind or patch vertical change of grade, Reduce opening - and/or - Reorient grate opening and/or replace type of grate, Remove or move object reducing sidewalk width	0.03	0.03%
Grind or patch vertical change of grade, Reduce opening - and/or - Reorient grate opening and/or replace type of grate, Remove or move object reducing sidewalk width, Replace walk and regrade driveway	0.05	0.04%
Grind or patch vertical change of grade, Reduce opening - and/or - Reorient grate opening and/or replace type of grate, Replace walk and regrade driveway	0.04	0.03%
Grind or patch vertical change of grade, Regrade sidewalk	3.35	2.44%
Grind or patch vertical change of grade, Regrade sidewalk, Reduce opening - and/or - Reorient grate opening and/or replace type of grate	1.38	1.01%
Grind or patch vertical change of grade, Regrade sidewalk, Reduce opening - and/or - Reorient grate opening and/or replace type of grate, Remove or move object reducing sidewalk width	0.26	0.19%
Grind or patch vertical change of grade, Regrade sidewalk, Reduce opening - and/or - Reorient grate opening and/or replace type of grate, Remove or move object reducing sidewalk width, Replace walk and regrade driveway	3.09	2.25%
Grind or patch vertical change of grade, Regrade sidewalk, Reduce opening - and/or - Reorient grate opening and/or replace type of grate, Replace walk and regrade driveway	2.63	1.91%
Grind or patch vertical change of grade, Regrade sidewalk, Remove or move object reducing sidewalk width	0.49	0.36%
Grind or patch vertical change of grade, Regrade sidewalk, Remove or move object reducing sidewalk width, Replace walk and regrade driveway	3.34	2.43%
Grind or patch vertical change of grade, Regrade sidewalk, Remove overhanging or protruding object	1.78	1.30%
Grind or patch vertical change of grade, Regrade sidewalk, Remove overhanging or protruding object, Reduce opening - and/or - Reorient grate opening and/or replace type of grate	1.57	1.14%
Grind or patch vertical change of grade, Regrade sidewalk, Remove overhanging or protruding object, Reduce opening - and/or - Reorient grate opening and/or replace type of grate, Remove or move object reducing sidewalk width	0.63	0.46%
Grind or patch vertical change of grade, Regrade sidewalk, Remove overhanging or protruding object, Reduce opening - and/or - Reorient grate opening and/or replace type of grate, Remove or move object reducing sidewalk width, Replace walk and regrade driveway	11.15	8.11%

Barrier Removal Action(s)	Total Miles	Percent Total
Grind or patch vertical change of grade, Regrade sidewalk, Remove overhanging or protruding object, Reduce opening - and/or - Reorient grate opening and/or replace type of grate, Replace walk and regrade driveway	4.29	3.12%
Grind or patch vertical change of grade, Regrade sidewalk, Remove overhanging or protruding object, Remove or move object reducing sidewalk width	0.89	0.65%
Grind or patch vertical change of grade, Regrade sidewalk, Remove overhanging or protruding object, Remove or move object reducing sidewalk width, Replace walk and regrade driveway	11.09	8.07%
Grind or patch vertical change of grade, Regrade sidewalk, Remove overhanging or protruding object, Replace walk and regrade driveway	5.28	3.84%
Grind or patch vertical change of grade, Regrade sidewalk, Replace walk and regrade driveway	5.00	3.64%
Grind or patch vertical change of grade, Remove or move object reducing sidewalk width, Replace walk and regrade driveway	0.19	0.14%
Grind or patch vertical change of grade, Remove overhanging or protruding object, Reduce opening - and/or - Reorient grate opening and/or replace type of grate	0.01	0.01%
Grind or patch vertical change of grade, Remove overhanging or protruding object, Reduce opening - and/or - Reorient grate opening and/or replace type of grate, Remove or move object reducing sidewalk width	0.05	0.04%
Grind or patch vertical change of grade, Remove overhanging or protruding object, Reduce opening - and/or - Reorient grate opening and/or replace type of grate, Remove or move object reducing sidewalk width, Replace walk and regrade driveway	0.23	0.17%
Grind or patch vertical change of grade, Remove overhanging or protruding object, Remove or move object reducing sidewalk width, Replace walk and regrade driveway	0.27	0.20%
Grind or patch vertical change of grade, Remove overhanging or protruding object, Replace walk and regrade driveway	0.60	0.44%
Grind or patch vertical change of grade, Replace walk and regrade driveway	0.08	0.06%
Reduce opening - and/or - Reorient grate opening and/or replace type of grate, Replace walk and regrade driveway	0.16	0.12%
Regrade sidewalk	4.13	3.00%
Regrade sidewalk, Reduce opening - and/or - Reorient grate opening and/or replace type of grate	0.67	0.49%
Regrade sidewalk, Reduce opening - and/or - Reorient grate opening and/or replace type of grate, Remove or move object reducing sidewalk width	0.14	0.10%

Barrier Removal Action(s)	Total Miles	Percent Total
Regrade sidewalk, Reduce opening - and/or - Reorient grate opening and/or replace type of grate, Remove or move object reducing sidewalk width, Replace walk and regrade driveway	1.08	0.79%
Regrade sidewalk, Reduce opening - and/or - Reorient grate opening and/or replace type of grate, Replace walk and regrade driveway	1.42	1.03%
Regrade sidewalk, Remove or move object reducing sidewalk width	0.48	0.35%
Regrade sidewalk, Remove or move object reducing sidewalk width, Replace walk and regrade driveway	1.50	1.09%
Regrade sidewalk, Remove overhanging or protruding object	0.93	0.68%
Regrade sidewalk, Remove overhanging or protruding object, Reduce opening - and/or - Reorient grate opening and/or replace type of grate	0.35	0.25%
Regrade sidewalk, Remove overhanging or protruding object, Reduce opening - and/or - Reorient grate opening and/or replace type of grate, Remove or move object reducing sidewalk width	0.08	0.06%
Regrade sidewalk, Remove overhanging or protruding object, Reduce opening - and/or - Reorient grate opening and/or replace type of grate, Remove or move object reducing sidewalk width, Replace walk and regrade driveway	0.74	0.54%
Regrade sidewalk, Remove overhanging or protruding object, Reduce opening - and/or - Reorient grate opening and/or replace type of grate, Replace walk and regrade driveway	0.68	0.50%
Regrade sidewalk, Remove overhanging or protruding object, Remove or move object reducing sidewalk width	0.60	0.44%
Regrade sidewalk, Remove overhanging or protruding object, Remove or move object reducing sidewalk width, Replace walk and regrade driveway	1.98	1.44%
Regrade sidewalk, Remove overhanging or protruding object, Replace walk and regrade driveway	2.27	1.65%
Regrade sidewalk, Replace walk and regrade driveway	5.28	3.84%
Remove or move object reducing sidewalk width, Replace walk and regrade driveway	0.29	0.21%
Remove overhanging or protruding object, Reduce opening - and/or - Reorient grate opening and/or replace type of grate, Remove or move object reducing sidewalk width, Replace walk and regrade driveway	0.10	0.07%
Remove overhanging or protruding object, Reduce opening - and/or - Reorient grate opening and/or replace type of grate, Replace walk and regrade driveway	0.05	0.04%
Remove overhanging or protruding object, Remove or move object reducing sidewalk width, Replace walk and regrade driveway	0.35	0.25%

Barrier Removal Action(s)	Total Miles	Percent Total
Remove overhanging or protruding object, Replace walk and regrade driveway	0.57	0.41%
Replace walk and regrade driveway	1.18	0.86%
Subtotal	83	60%
Low Priority		
Grind or patch vertical change of grade	0.53	0.38%
Grind or patch vertical change of grade, Reduce opening - and/or - Reorient grate opening and/or replace type of grate	0.05	0.03%
Grind or patch vertical change of grade, Reduce opening - and/or - Reorient grate opening and/or replace type of grate, Remove or move object reducing sidewalk width, Replace walk and regrade driveway	0.18	0.13%
Grind or patch vertical change of grade, Reduce opening - and/or - Reorient grate opening and/or replace type of grate, Replace walk and regrade driveway	0.05	0.03%
Grind or patch vertical change of grade, Regrade sidewalk	2.30	1.67%
Grind or patch vertical change of grade, Regrade sidewalk, Reduce opening - and/or - Reorient grate opening and/or replace type of grate	0.60	0.43%
Grind or patch vertical change of grade, Regrade sidewalk, Reduce opening - and/or - Reorient grate opening and/or replace type of grate, Remove or move object reducing sidewalk width	0.11	0.08%
Grind or patch vertical change of grade, Regrade sidewalk, Reduce opening - and/or - Reorient grate opening and/or replace type of grate, Remove or move object reducing sidewalk width, Replace walk and regrade driveway	1.07	0.78%
Grind or patch vertical change of grade, Regrade sidewalk, Reduce opening - and/or - Reorient grate opening and/or replace type of grate, Replace walk and regrade driveway	1.03	0.75%
Grind or patch vertical change of grade, Regrade sidewalk, Remove or move object reducing sidewalk width	0.46	0.34%
Grind or patch vertical change of grade, Regrade sidewalk, Remove or move object reducing sidewalk width, Replace walk and regrade driveway	1.23	0.89%
Grind or patch vertical change of grade, Regrade sidewalk, Remove overhanging or protruding object	0.91	0.66%
Grind or patch vertical change of grade, Regrade sidewalk, Remove overhanging or protruding object, Reduce opening - and/or - Reorient grate opening and/or replace type of grate	0.36	0.26%

Barrier Removal Action(s)	Total Miles	Percent Total
Grind or patch vertical change of grade, Regrade sidewalk, Remove overhanging or protruding object, Reduce opening - and/or - Reorient grate opening and/or replace type of grate, Remove or move object reducing sidewalk width	0.25	0.18%
Grind or patch vertical change of grade, Regrade sidewalk, Remove overhanging or protruding object, Reduce opening - and/or - Reorient grate opening and/or replace type of grate, Remove or move object reducing sidewalk width, Replace walk and regrade driveway	5.28	3.84%
Grind or patch vertical change of grade, Regrade sidewalk, Remove overhanging or protruding object, Reduce opening - and/or - Reorient grate opening and/or replace type of grate, Replace walk and regrade driveway	1.78	1.30%
Grind or patch vertical change of grade, Regrade sidewalk, Remove overhanging or protruding object, Remove or move object reducing sidewalk width	0.53	0.39%
Grind or patch vertical change of grade, Regrade sidewalk, Remove overhanging or protruding object, Remove or move object reducing sidewalk width, Replace walk and regrade driveway	6.56	4.77%
Grind or patch vertical change of grade, Regrade sidewalk, Remove overhanging or protruding object, Replace walk and regrade driveway	1.60	1.16%
Grind or patch vertical change of grade, Regrade sidewalk, Replace walk and regrade driveway	1.26	0.91%
Grind or patch vertical change of grade, Remove or move object reducing sidewalk width	0.02	0.01%
Grind or patch vertical change of grade, Remove or move object reducing sidewalk width, Replace walk and regrade driveway	0.15	0.11%
Grind or patch vertical change of grade, Remove overhanging or protruding object	0.11	0.08%
Grind or patch vertical change of grade, Remove overhanging or protruding object, Reduce opening - and/or - Reorient grate opening and/or replace type of grate	0.09	0.06%
Grind or patch vertical change of grade, Remove overhanging or protruding object, Reduce opening - and/or - Reorient grate opening and/or replace type of grate, Remove or move object reducing sidewalk width	0.04	0.03%
Grind or patch vertical change of grade, Remove overhanging or protruding object, Reduce opening - and/or - Reorient grate opening and/or replace type of grate, Remove or move object reducing sidewalk width, Replace walk and regrade driveway	0.29	0.21%
Grind or patch vertical change of grade, Remove overhanging or protruding object, Reduce opening - and/or - Reorient grate opening and/or replace type of grate, Replace walk and regrade driveway	0.09	0.06%

Barrier Removal Action(s)	Total Miles	Percent Total
Grind or patch vertical change of grade, Remove overhanging or protruding object, Remove or move object reducing sidewalk width	0.16	0.11%
Grind or patch vertical change of grade, Remove overhanging or protruding object, Remove or move object reducing sidewalk width, Replace walk and regrade driveway	0.29	0.21%
Grind or patch vertical change of grade, Remove overhanging or protruding object, Replace walk and regrade driveway	0.44	0.32%
Grind or patch vertical change of grade, Replace walk and regrade driveway	0.03	0.02%
Reduce opening - and/or - Reorient grate opening and/or replace type of grate	0.10	0.07%
Regrade sidewalk	3.46	2.52%
Regrade sidewalk, Reduce opening - and/or - Reorient grate opening and/or replace type of grate	0.52	0.38%
Regrade sidewalk, Reduce opening - and/or - Reorient grate opening and/or replace type of grate, Remove or move object reducing sidewalk width, Replace walk and regrade driveway	0.19	0.14%
Regrade sidewalk, Remove or move object reducing sidewalk width	0.47	0.34%
Regrade sidewalk, Remove or move object reducing sidewalk width, Replace walk and regrade driveway	0.66	0.48%
Regrade sidewalk, Remove overhanging or protruding object	0.76	0.55%
Regrade sidewalk, Remove overhanging or protruding object, Reduce opening - and/or - Reorient grate opening and/or replace type of grate	0.07	0.05%
Regrade sidewalk, Remove overhanging or protruding object, Reduce opening - and/or - Reorient grate opening and/or replace type of grate, Remove or move object reducing sidewalk width	0.07	0.05%
Regrade sidewalk, Remove overhanging or protruding object, Reduce opening - and/or - Reorient grate opening and/or replace type of grate, Remove or move object reducing sidewalk width, Replace walk and regrade driveway	0.08	0.06%
Regrade sidewalk, Remove overhanging or protruding object, Reduce opening - and/or - Reorient grate opening and/or replace type of grate, Replace walk and regrade driveway	0.05	0.03%
Regrade sidewalk, Remove overhanging or protruding object, Remove or move object reducing sidewalk width	0.57	0.42%
Regrade sidewalk, Remove overhanging or protruding object, Remove or move object reducing sidewalk width, Replace walk and regrade driveway	1.61	1.17%
Regrade sidewalk, Remove overhanging or protruding object, Replace walk and regrade driveway	1.19	0.86%
Regrade sidewalk, Replace walk and regrade driveway	1.11	0.81%

Barrier Removal Action(s)	Total Miles	Percent Total
Remove or move object reducing sidewalk width	0.46	0.33%
Remove or move object reducing sidewalk width, Replace walk and regrade driveway	0.16	0.11%
Remove overhanging or protruding object	0.54	0.39%
Remove overhanging or protruding object, Reduce opening - and/or - Reorient grate opening and/or replace type of grate	0.02	0.01%
Remove overhanging or protruding object, Reduce opening - and/or - Reorient grate opening and/or replace type of grate, Remove or move object reducing sidewalk width, Replace walk and regrade driveway	0.13	0.09%
Remove overhanging or protruding object, Remove or move object reducing sidewalk width	0.12	0.09%
Remove overhanging or protruding object, Remove or move object reducing sidewalk width, Replace walk and regrade driveway	0.37	0.27%
Remove overhanging or protruding object, Replace walk and regrade driveway	0.11	0.08%
Replace walk and regrade driveway	0.83	0.60%
Subtotal	41	30%
No Deficiencies Identified		
No deficiencies	2.95	2.15%
Subtotal	3.0	2%
Total for All Projects	137	100%

Driveways

		ADA 35.150(d) Geospatial Proximity Priorities*				
		A	B	C	D	E
Priorities (Category)	Priority Description	Location of Citizen Complaint / Request (ADA Title II Program Access)	Location Serving Government Offices & Public Facilities	Location Serving Transportation	Location Serving Commercial Districts, Employers	Location Serving Other Areas
1	See Category 1 Description	A1 High Priority	B1	C1	D1	E1
2	See Category 2 Description	A2	B2 Medium Priority	C2	D2	E2
3	See Category 3 Description	A3	B3 Low Priority	C3	D3	E3
4	No deficiencies identified	A4	B4	C4	D4	E4

*The priorities listed under columns B, C, D, and E are specified under Title II 28 CFR Section 35.150 (d)

Driveway Barrier Descriptions

Category 1:

- Driveway with cross slope greater than two percent along freeway and/or expressway.

Category 2:

- Driveway with cross slope greater than two percent along major collector road.

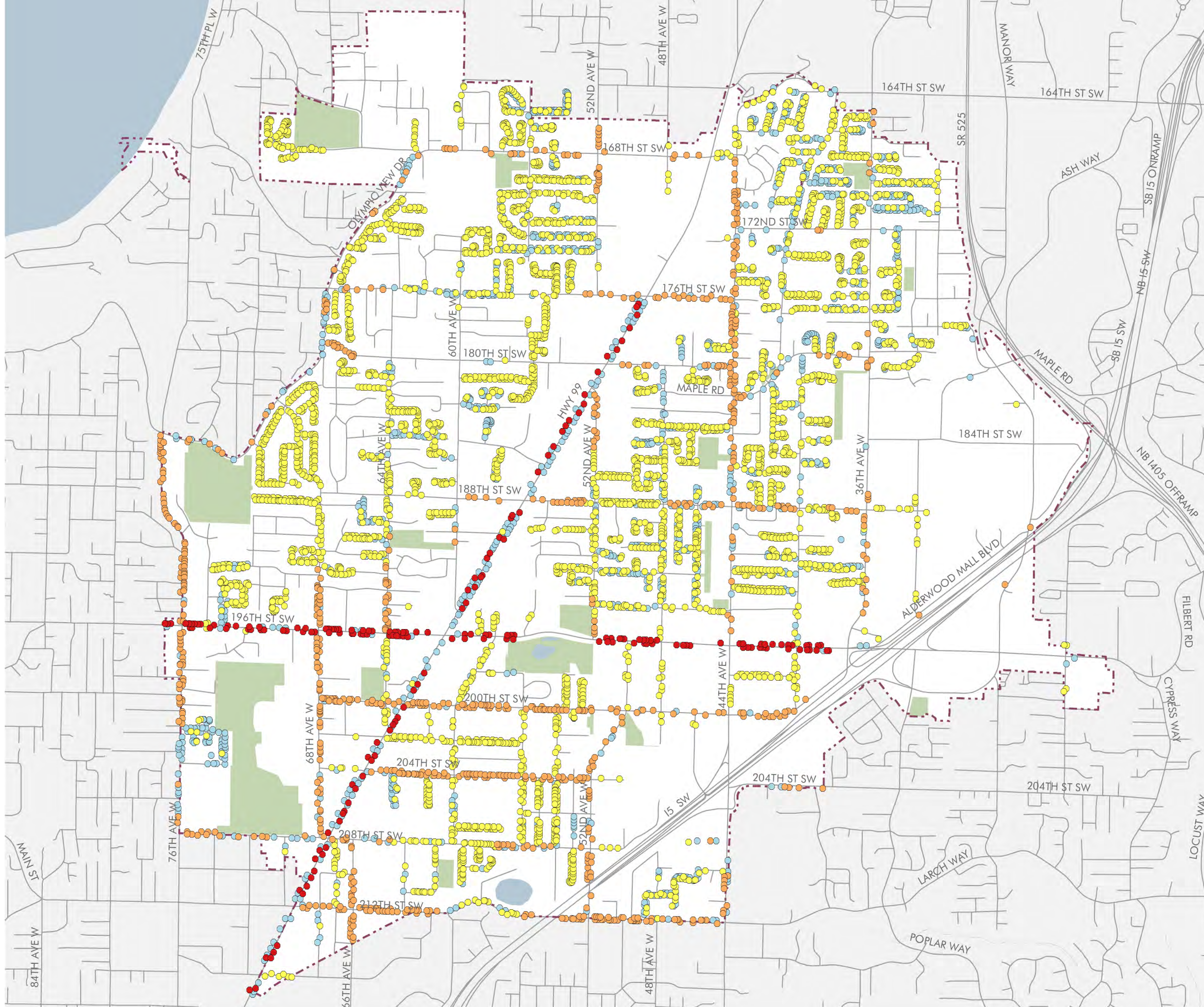
Category 3:

- Driveway with cross slope greater than two percent along minor arterial or local road.

Category 4:

- No deficiencies identified.

Driveways Barrier Removal Projects



Barrier Removal Rank

- High Priority
- Medium Priority
- Low Priority
- No Deficiencies Identified

Context

- City Limits
- Water Feature
- Streets
- Park

DRAFT

2.20.2018



This page intentionally left blank.

Table 13. Driveway Barrier Summary

Category	Priority	Total Instances	Percent Total	Schedule Year
High Priority				
1	B1	25	0.5%	TBD
1	C1	159	2.9%	TBD
Subtotal		184	3%	-
Medium Priority				
2	B2	101	1.8%	TBD
2	C2	623	11.3%	TBD
2	D2	83	1.5%	TBD
Subtotal		807	15%	-
Low Priority				
2	E2	203	3.7%	TBD
3	B3	154	2.8%	TBD
3	C3	1,316	23.8%	TBD
3	D3	45	0.8%	TBD
3	E3	1,611	29.1%	TBD
Subtotal		3,329	60%	-
No Deficiencies				
4	B4	80	1.4%	n/a
4	C4	600	10.9%	n/a
4	D4	22	0.4%	n/a
4	E4	506	9.2%	n/a
Subtotal		1,208	22%	-
Total for All Projects		5,528	100%	-

Table 14. Driveway Barrier Summary by Barrier Type

Barrier Removal Action(s)	Total Instances	Percent Total
No deficiencies identified	1,208	21.9%
Replace walk and regrade driveway	4,320	78.1%
Total for All Projects	5,528	100%

Table 15. Driveway Barrier Summary by Rank

Barrier Removal Action(s)	Total Instances	Percent Total
High Priority		
Replace walk and regrade driveway	184	3.3%
Subtotal	184	3%
Medium Priority		
Replace walk and regrade driveway	807	14.6%
Subtotal	807	15%
Low Priority		
Replace walk and regrade driveway	3,329	60.2%
Subtotal	3,329	60%
No Deficiencies Identified		
No deficiencies	1,208	21.9%
Subtotal	1,208	22%
Total for All Projects	5,528	100%

This page intentionally left blank.