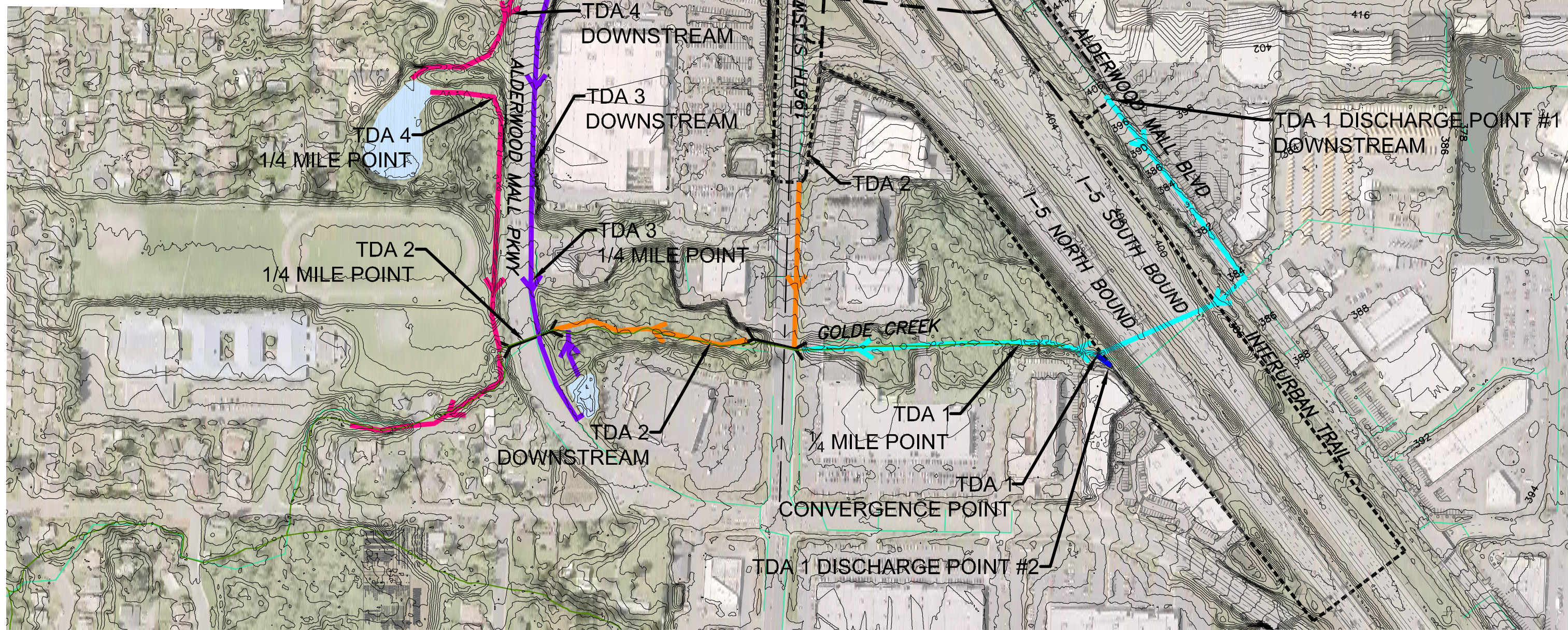


LEGEND

- TDA LIMITS
- ➔ DOWNSTREAM ROUTE
- ⌵ CULVERT
- - - TDA 1 DISTURBED AREA BOUNDARY LIMITS



NOTE:

THE DRAINAGE FEATURES SHOWN ON THIS MAP ARE A COMBINATION OF GIS RECORDS FROM THE CITY OF LYNNWOOD, LIMITED FIELD RECONNAISSANCE WITHIN THE RIGHT-OF-WAY, AND TOPOGRAPHIC SURVEY INFORMATION. AS SUCH, THE DRAINAGE INFORMATION SHOWN HERE ON IS APPROXIMATE AND BASED UPON BEST AVAILABLE INFORMATION.

Perteet Inc.
 425-252-7700 | 1-800-615-9900
 2707 Colby Avenue, Suite 900
 Everett, Washington 98201

CITY OF LYNNWOOD
 POPLAR WAY EXTENSION
 DOWNSTREAM OVERALL MAP

FIGURE
 A-2.9