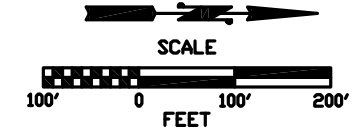
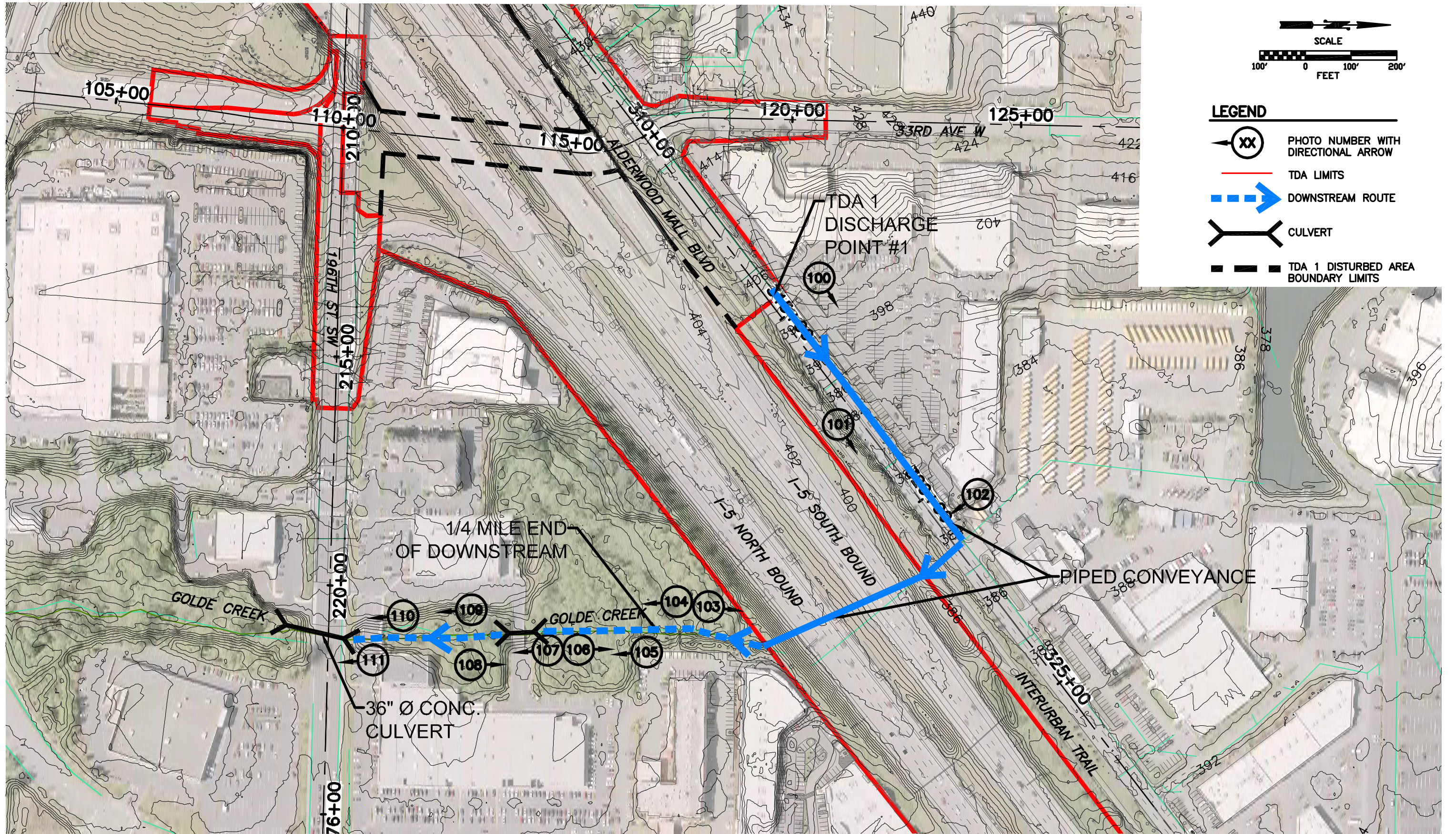


Jun 19, 2013 - 10:38am Mikev.C. C:\Users\mikev\appdata\local\temp\AcPublish\_11684\Downstream Map.dwg Layout Name: TDA1-1



- LEGEND**
- PHOTO NUMBER WITH DIRECTIONAL ARROW
  - TDA LIMITS
  - DOWNSTREAM ROUTE
  - CULVERT
  - TDA 1 DISTURBED AREA BOUNDARY LIMITS

**NOTE:**  
 THE DRAINAGE FEATURES SHOWN ON THIS MAP ARE A COMBINATION OF GIS RECORDS FROM THE CITY OF LYNNWOOD, LIMITED FIELD RECONNAISSANCE WITHIN THE RIGHT-OF-WAY, AND TOPOGRAPHIC SURVEY INFORMATION. AS SUCH, THE DRAINAGE INFORMATION SHOWN HERE ON IS APPROXIMATE AND BASED UPON BEST AVAILABLE INFORMATION.

 **Perteet** Inc.  
 425-252-7700 | 1-800-615-9900  
 2707 Colby Avenue, Suite 900  
 Everett, Washington 98201

CITY OF LYNNWOOD  
 POPLAR WAY EXTENSION  
 DOWNSTREAM MAP TDA 1 (DISCHARGE POINT #1)

FIGURE  
 A-2.10