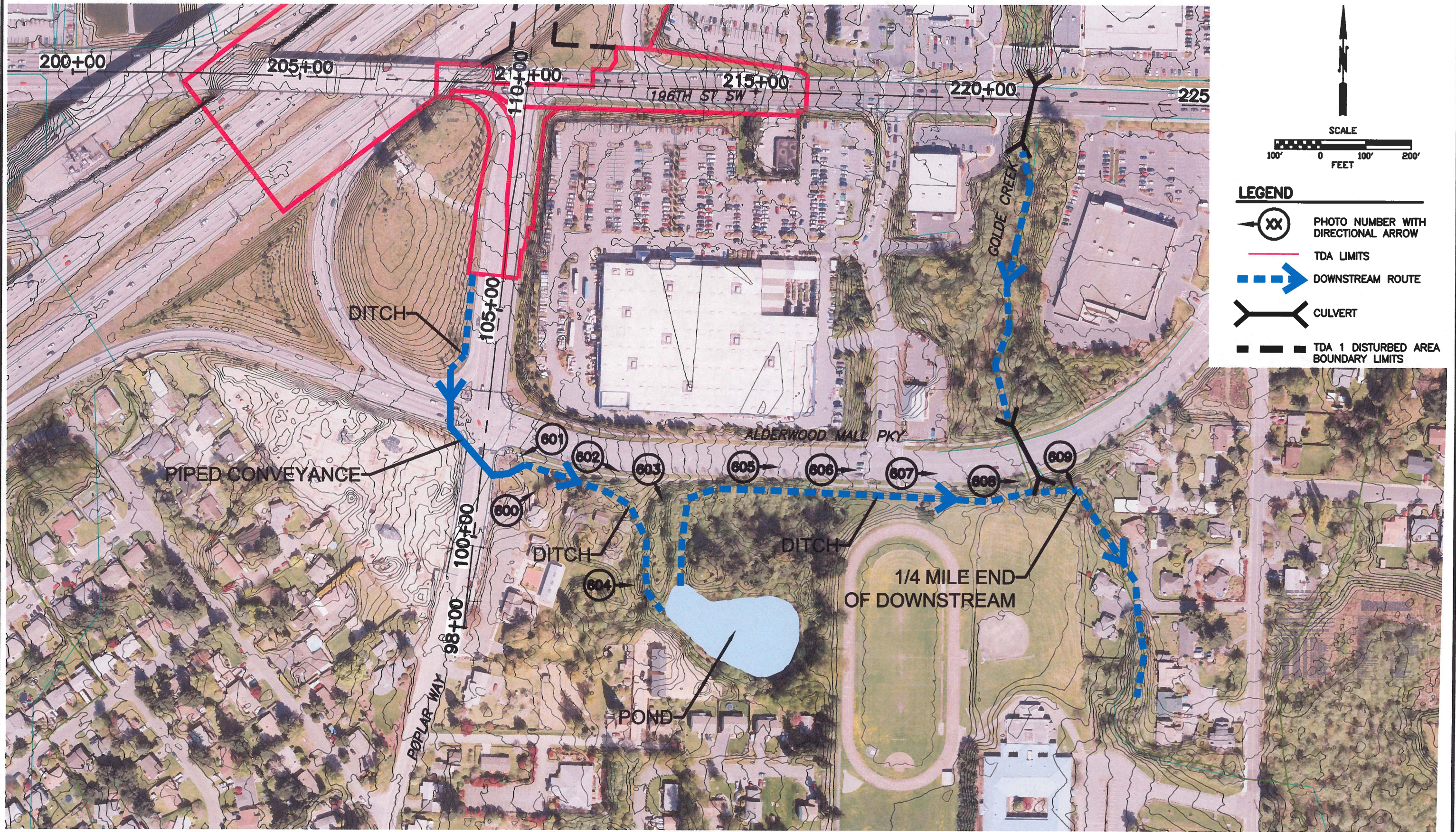







Sep 23, 2013 - 12:29pm MickeyC_X:\Lynnwood_City of Lynnwood_City of Projects\20100156 - Poplar Way Extension Bridge\CADD\Exhibits\Downstream Map.dwg Layout Name: TDA4



LEGEND

-  PHOTO NUMBER WITH DIRECTIONAL ARROW
-  TDA LIMITS
-  DOWNSTREAM ROUTE
-  CULVERT
-  TDA 1 DISTURBED AREA BOUNDARY LIMITS

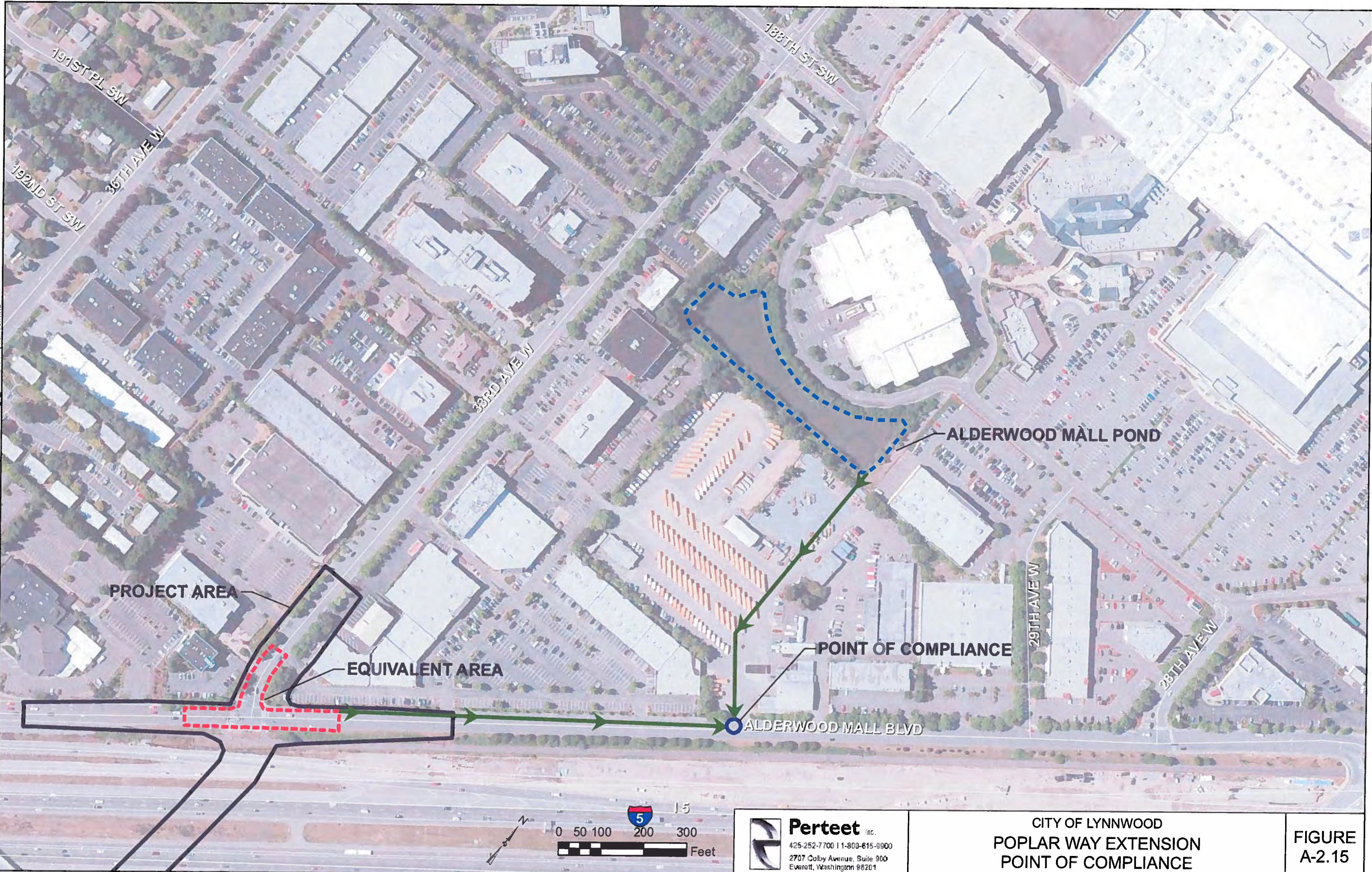
NOTE:
 THE DRAINAGE FEATURES SHOWN ON THIS MAP ARE A COMBINATION OF GIS RECORDS FROM THE CITY OF LYNNWOOD, LIMITED FIELD RECONNAISSANCE WITHIN THE RIGHT-OF-WAY, AND TOPOGRAPHIC SURVEY INFORMATION. AS SUCH, THE DRAINAGE INFORMATION SHOWN HERE ON IS APPROXIMATE AND BASED UPON BEST AVAILABLE INFORMATION.


Perteeet Inc.
 425-252-7700 | 1-800-615-9900
 2707 Colby Avenue, Suite 900
 Everett, Washington 98201

CITY OF LYNNWOOD
 POPLAR WAY EXTENSION
 DOWNSTREAM MAP TDA 4

FIGURE
 A-2.14

Path: X:\Lynnwood_City of Projects\20100156 - Poplar Way Extension Bridge\GIS\Mapdocs\Parfeet_PoplarWayExtensionBridge_PointofCompliance.mxd



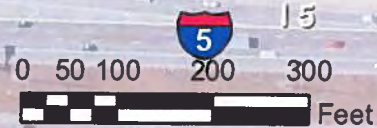
PROJECT AREA

EQUIVALENT AREA

ALDERWOOD MALL POND

POINT OF COMPLIANCE

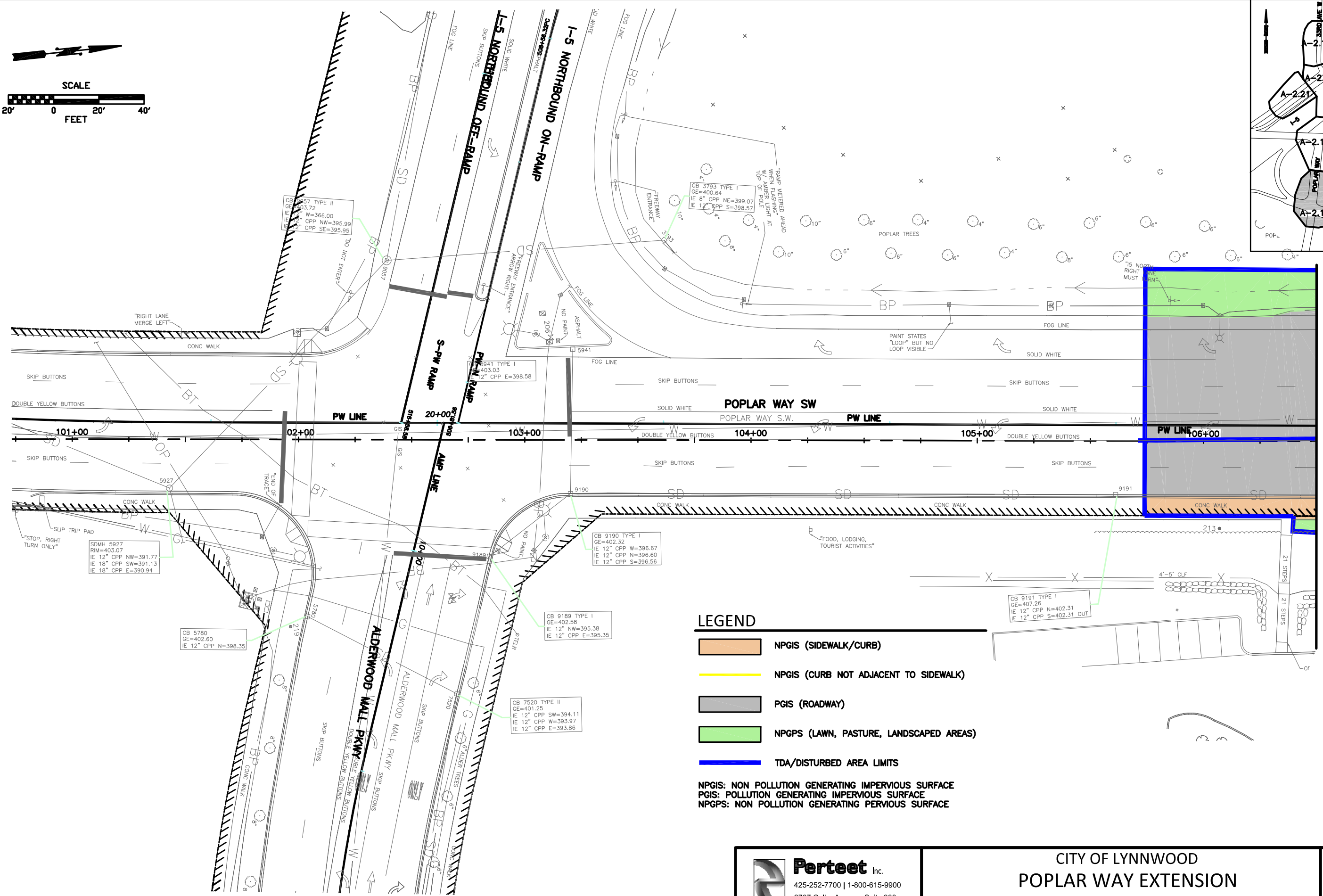
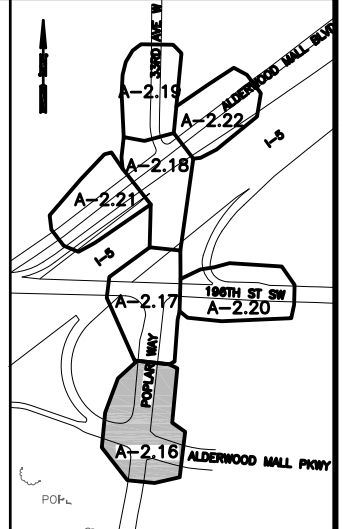
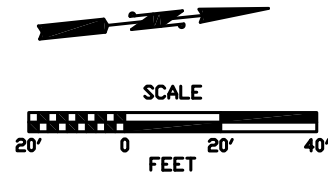
ALDERWOOD MALL BLVD



Perteeet Inc.
425-252-7700 | 1-800-615-9900
2707 Colby Avenue, Suite 900
Everett, Washington 98201

CITY OF LYNNWOOD
POPLAR WAY EXTENSION
POINT OF COMPLIANCE

FIGURE
A-2.15



MATCHLINE SEE FIGURE A-2.17

LEGEND

- NPGIS (SIDEWALK/CURB)
- NPGIS (CURB NOT ADJACENT TO SIDEWALK)
- PGIS (ROADWAY)
- NPGPS (LAWN, PASTURE, LANDSCAPED AREAS)
- TDA/DISTURBED AREA LIMITS

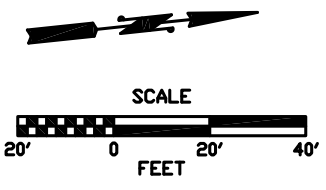
NPGIS: NON POLLUTION GENERATING IMPERVIOUS SURFACE
 PGIS: POLLUTION GENERATING IMPERVIOUS SURFACE
 NPGPS: NON POLLUTION GENERATING PERVIOUS SURFACE

Jun 25, 2013 - 9:31am MickeyC: X:\Lynnwood_City.on\Projects\20100156 - Poplar Way Extension Bridge\CADD\Exhibits\Existing Impervious Areas.dwg Layout Name: A-2.16

Perteet Inc.
 425-252-7700 | 1-800-615-9900
 2707 Colby Avenue, Suite 900
 Everett, Washington 98201

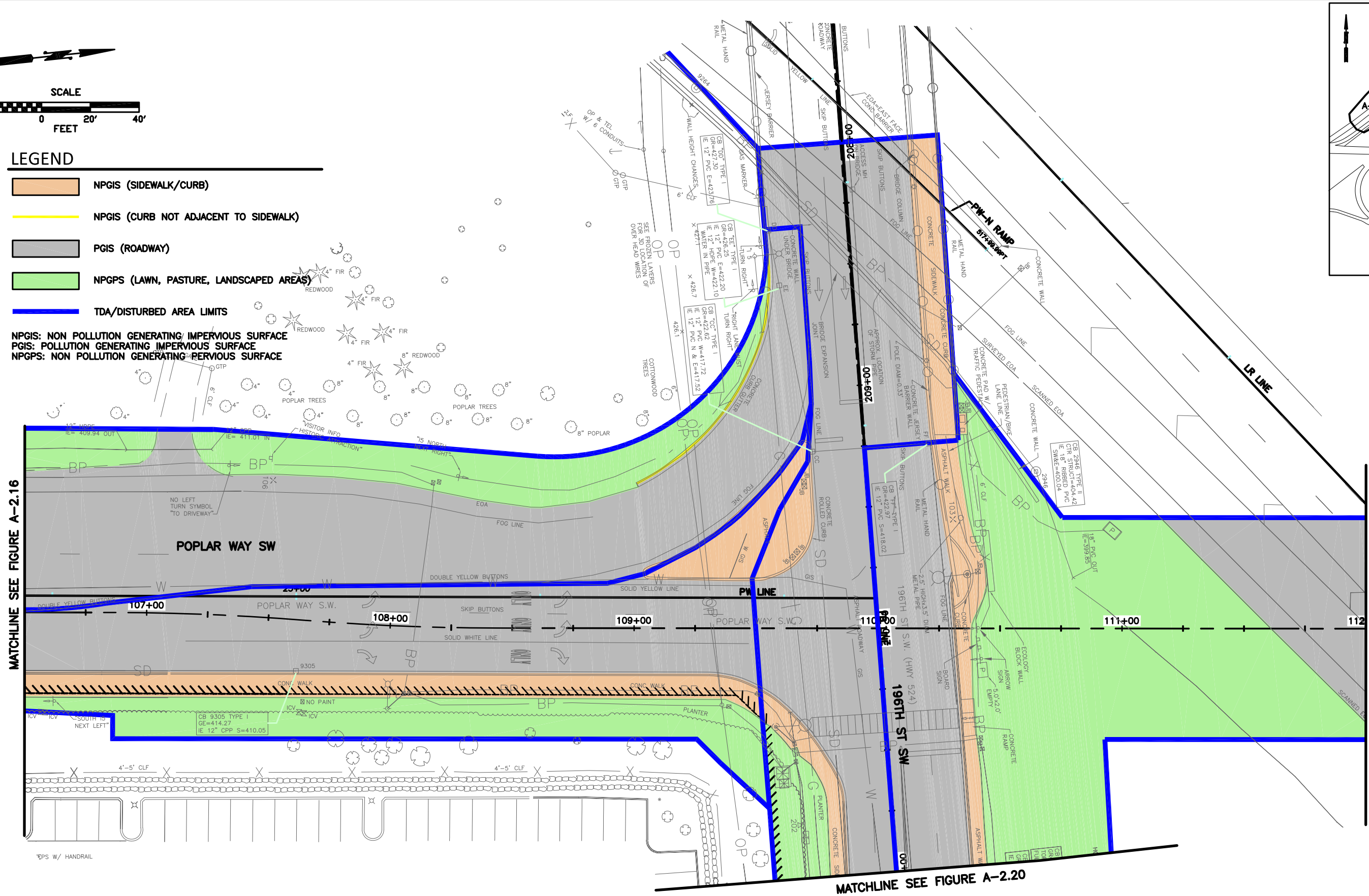
CITY OF LYNNWOOD
 POPLAR WAY EXTENSION
 EXISTING IMPERVIOUS AREAS

FIGURE
 A-2.16



- LEGEND**
- NPGIS (SIDEWALK/CURB)
 - NPGIS (CURB NOT ADJACENT TO SIDEWALK)
 - PGIS (ROADWAY)
 - NPGPS (LAWN, PASTURE, LANDSCAPED AREAS)
 - TDA/DISTURBED AREA LIMITS

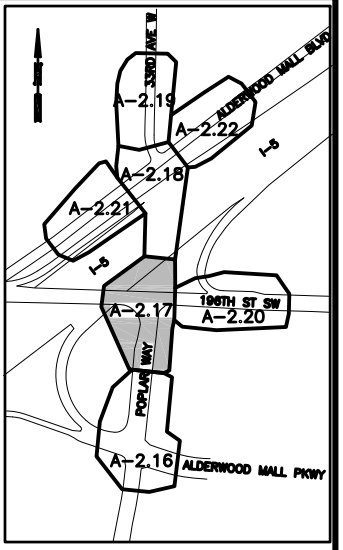
NPGIS: NON POLLUTION GENERATING IMPERVIOUS SURFACE
 PGIS: POLLUTION GENERATING IMPERVIOUS SURFACE
 NPGPS: NON POLLUTION GENERATING IMPERVIOUS SURFACE



MATCHLINE SEE FIGURE A-2.16

MATCHLINE SEE FIGURE A-2.18

MATCHLINE SEE FIGURE A-2.20

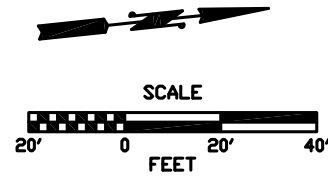


Jun 25, 2013 - 9:33am MickeyC:\Lynnwood_City\Projects\20100156 - Poplar Way Extension Bridge\CADD\Exhibits\Existing Impervious Areas.dwg Layout Name: A-2.17

Perteet Inc.
 425-252-7700 | 1-800-615-9900
 2707 Colby Avenue, Suite 900
 Everett, Washington 98201

CITY OF LYNNWOOD
POPLAR WAY EXTENSION
 EXISTING IMPERVIOUS AREAS

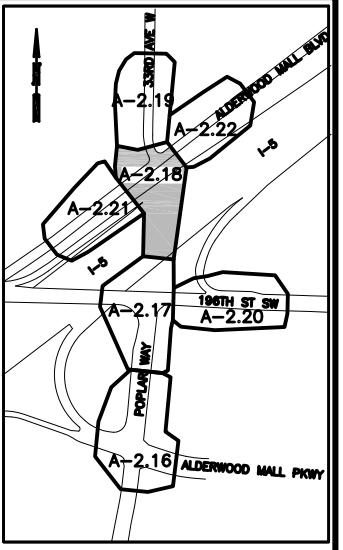
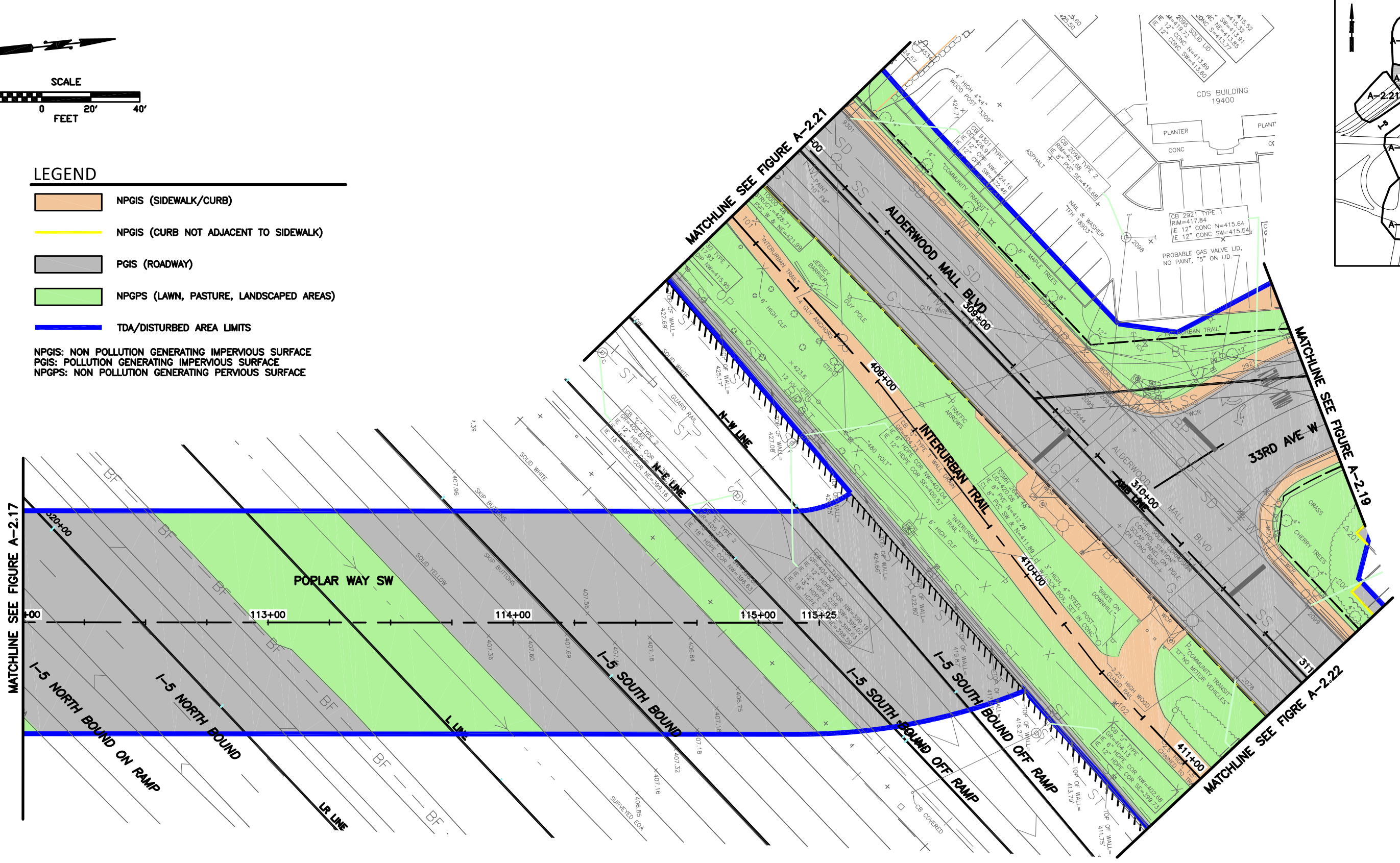
FIGURE
 A-2.17



LEGEND

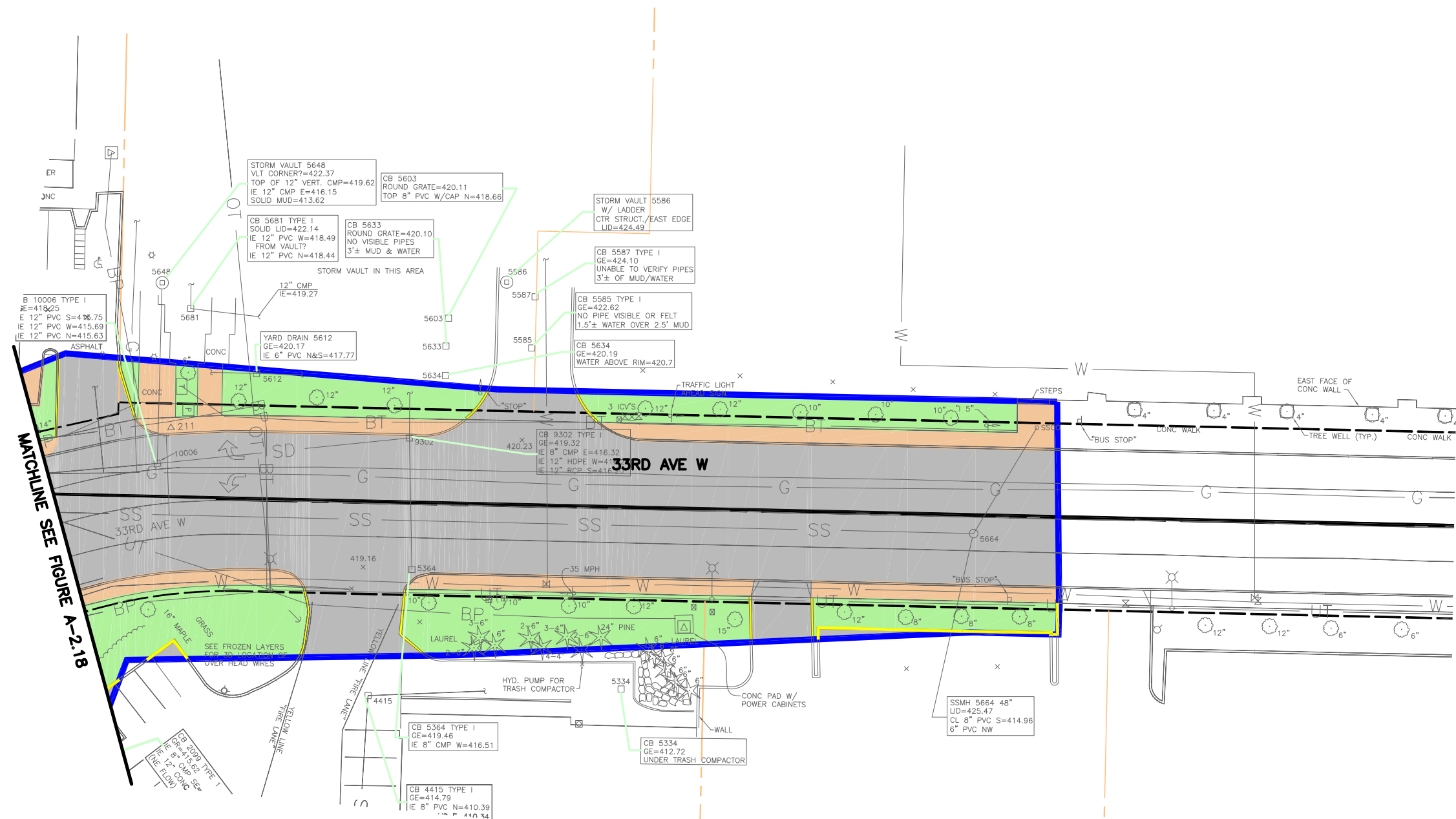
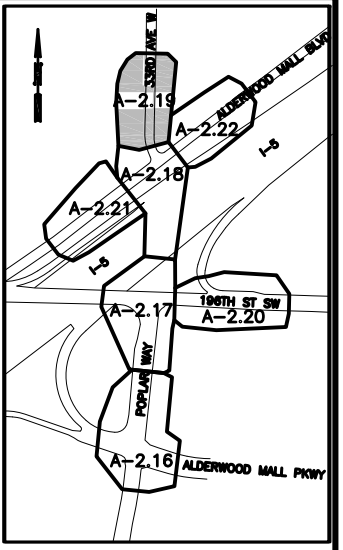
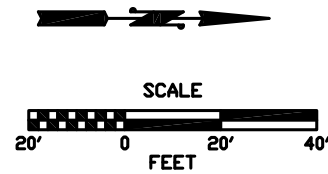
- NPGIS (SIDEWALK/CURB)
- NPGIS (CURB NOT ADJACENT TO SIDEWALK)
- PGIS (ROADWAY)
- NPGPS (LAWN, PASTURE, LANDSCAPED AREAS)
- TDA/DISTURBED AREA LIMITS

NPGIS: NON POLLUTION GENERATING IMPERVIOUS SURFACE
 PGIS: POLLUTION GENERATING IMPERVIOUS SURFACE
 NPGPS: NON POLLUTION GENERATING PEROVIOUS SURFACE



Jun 25, 2013 - 9:33am MickeyC: X:\Lynnwood_City\Projects\20100156 - Poplar Way Extension Bridge\CADD\Exhibits\Existing Impervious Areas.dwg Layout Name: A-2.18

<p>Perteet Inc. 425-252-7700 1-800-615-9900 2707 Colby Avenue, Suite 900 Everett, Washington 98201</p>	<p>CITY OF LYNNWOOD POPLAR WAY EXTENSION EXISTING IMPERVIOUS AREAS</p>	<p>FIGURE A-2.18</p>
--	--	---



LEGEND

- NPGIS (SIDEWALK/CURB)
- NPGIS (CURB NOT ADJACENT TO SIDEWALK)
- PGIS (ROADWAY)
- NPGPS (LAWN, PASTURE, LANDSCAPED AREAS)
- TDA/DISTURBED AREA LIMITS

NPGIS: NON POLLUTION GENERATING IMPERVIOUS SURFACE
 PGIS: POLLUTION GENERATING IMPERVIOUS SURFACE
 NPGPS: NON POLLUTION GENERATING IMPERVIOUS SURFACE

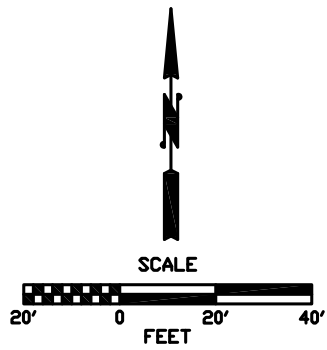
Jun 25, 2013 - 9:33am MickeyC:\Lynnwood_City\Projects\20100156 - Poplar Way Extension Bridge\CADD\Exhibits\Existing Impervious Areas.dwg Layout Name: A-2.19

Perteet Inc.
 425-252-7700 | 1-800-615-9900
 2707 Colby Avenue, Suite 900
 Everett, Washington 98201

CITY OF LYNNWOOD
 POPLAR WAY EXTENSION
 EXISTING IMPERVIOUS AREAS

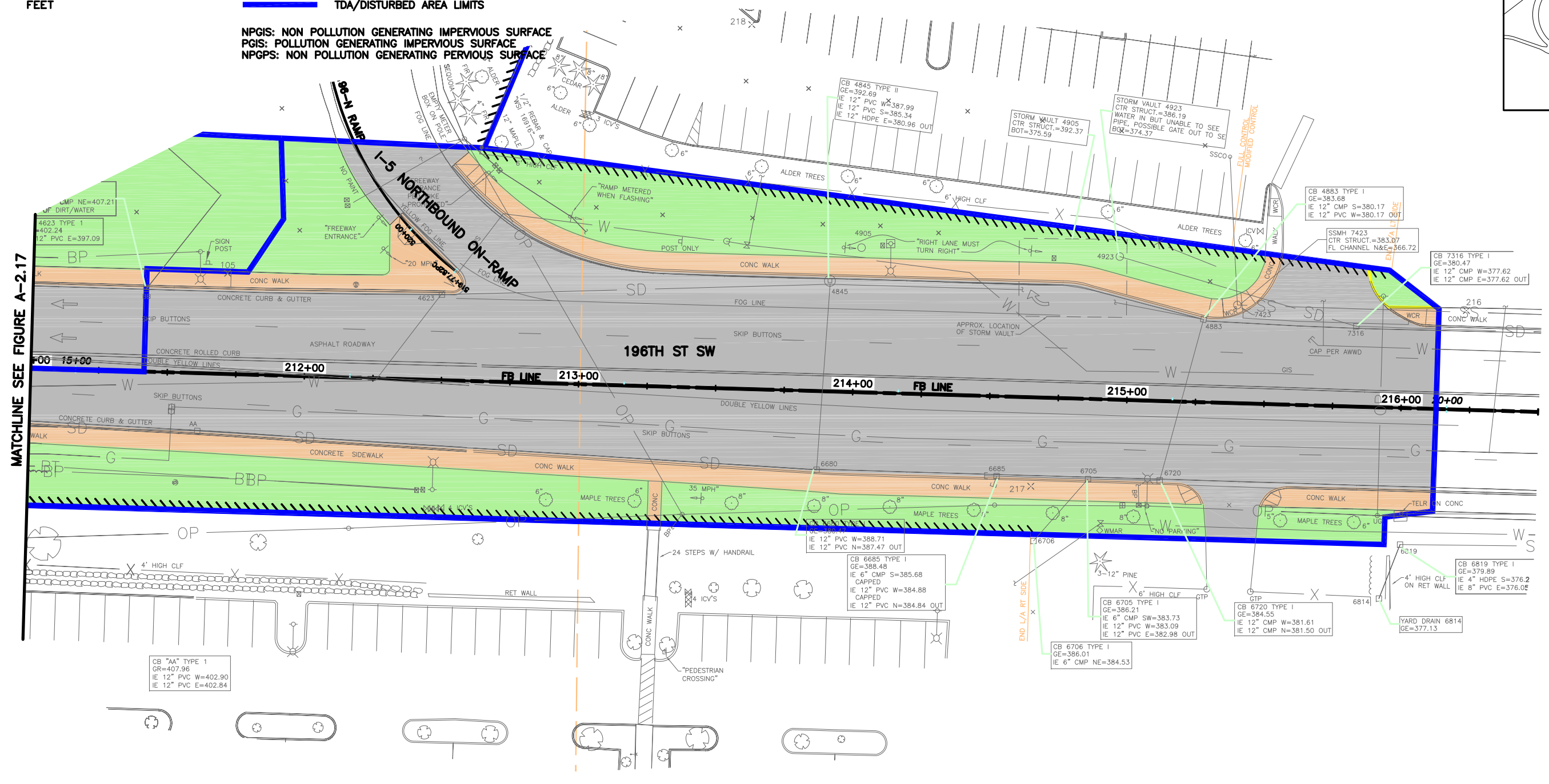
FIGURE
 A-2.19

Jun 25, 2013 - 9:33am MickeyC X:\Lynnwood_City\Projects\20100156 - Poplar Way Extension Bridge\CADD\Exhibits\Existing Impervious Areas.dwg Layout Name: A-2.20

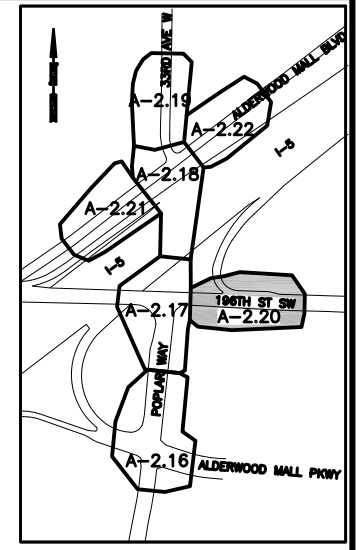


- LEGEND**
- NPGIS (SIDEWALK/CURB)
 - NPGIS (CURB NOT ADJACENT TO SIDEWALK)
 - PGIS (ROADWAY)
 - NPGPS (LAWN, PASTURE, LANDSCAPED AREAS)
 - TDA/DISTURBED AREA LIMITS

NPGIS: NON POLLUTION GENERATING IMPERVIOUS SURFACE
 PGIS: POLLUTION GENERATING IMPERVIOUS SURFACE
 NPGPS: NON POLLUTION GENERATING PERVIOUS SURFACE



MATCHLINE SEE FIGURE A-2.17

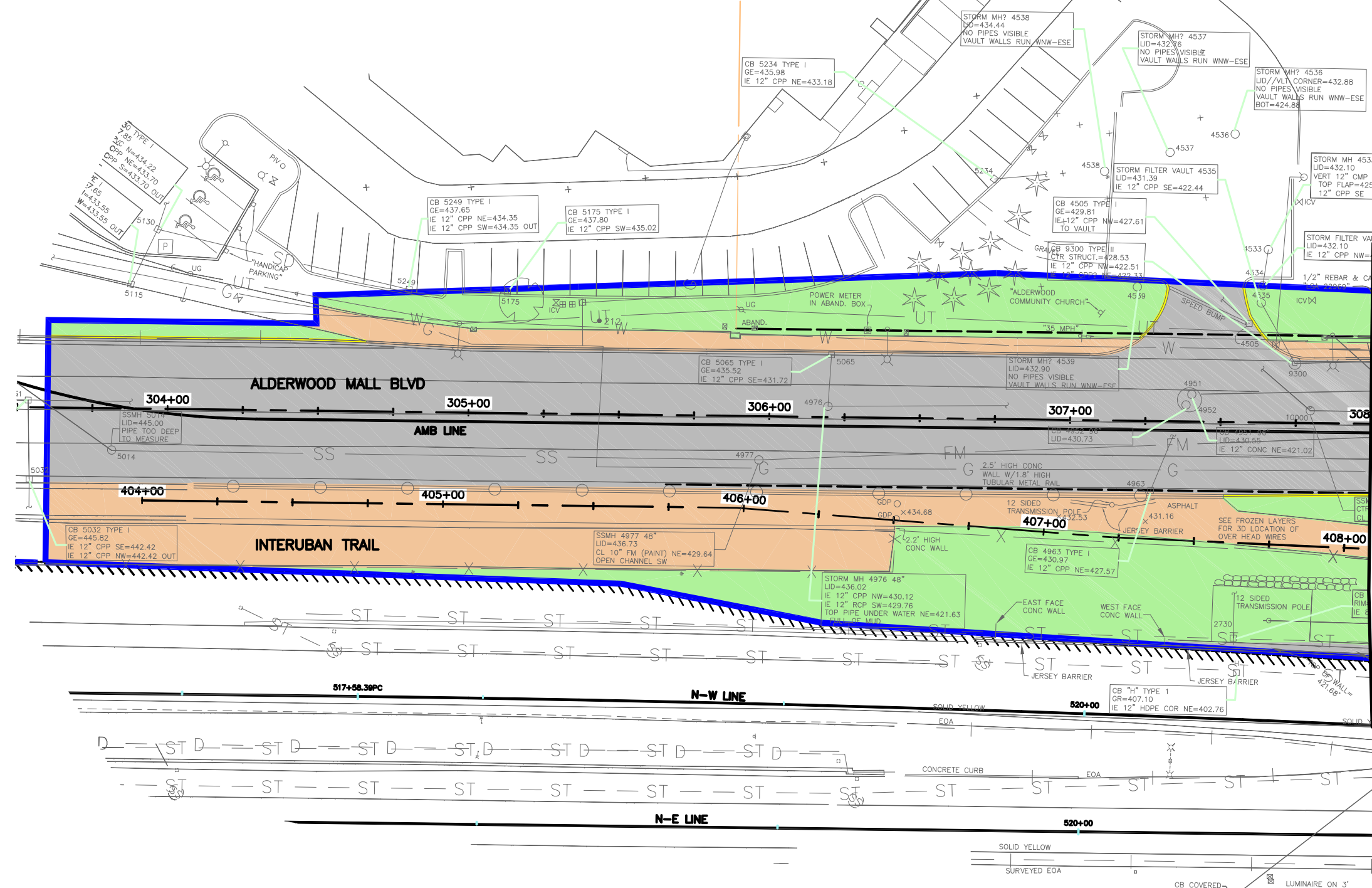
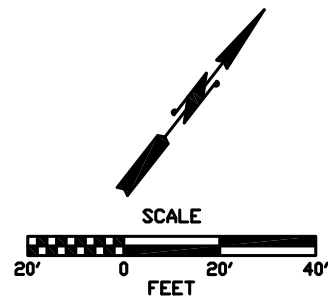


Perteet Inc.
 425-252-7700 | 1-800-615-9900
 2707 Colby Avenue, Suite 900
 Everett, Washington 98201

CITY OF LYNNWOOD
 POPLAR WAY EXTENSION
 EXISTING IMPERVIOUS AREAS

FIGURE
 A-2.20

Jun 25, 2013 - 9:33am MickeyC X:\Lynnwood_City\Projects\20100156 - Poplar Way Extension Bridge\CADD\Exhibits\Existing Impervious Areas.dwg Layout Name: A-2.21

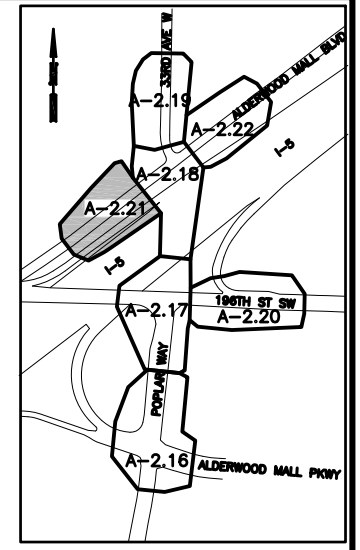


MATCHLINE SEE FIGURE A-2.18

LEGEND

- NPGIS (SIDEWALK/CURB)
- NPGIS (CURB NOT ADJACENT TO SIDEWALK)
- PGIS (ROADWAY)
- NPGPS (LAWN, PASTURE, LANDSCAPED AREAS)
- TDA/DISTURBED AREA LIMITS

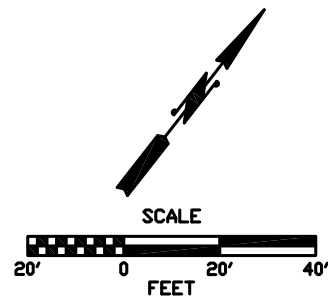
NPGIS: NON POLLUTION GENERATING IMPERVIOUS SURFACE
 PGIS: POLLUTION GENERATING IMPERVIOUS SURFACE
 NPGPS: NON POLLUTION GENERATING PERVIOUS SURFACE



Perteet Inc.
 425-252-7700 | 1-800-615-9900
 2707 Colby Avenue, Suite 900
 Everett, Washington 98201

CITY OF LYNNWOOD
 POPLAR WAY EXTENSION
 EXISTING IMPERVIOUS AREAS

FIGURE
 A-2.21

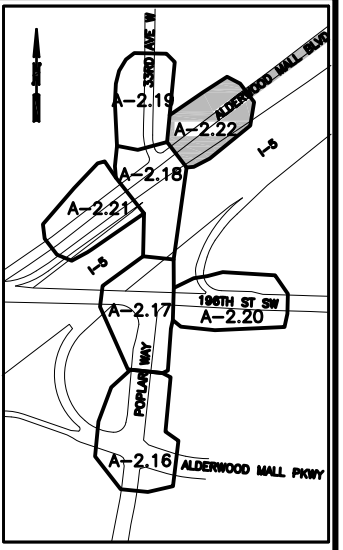
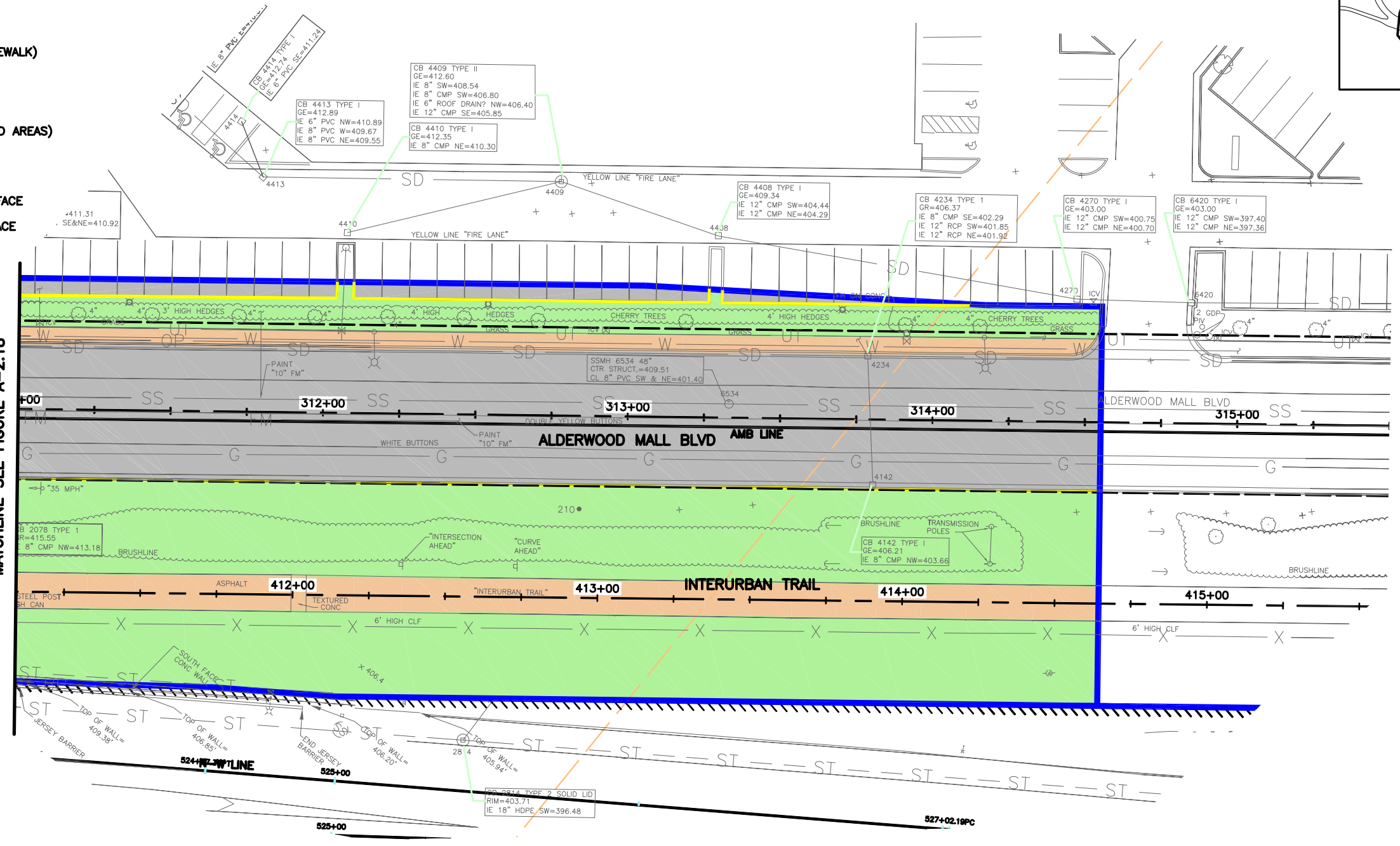


LEGEND

- NPGIS (SIDEWALK/CURB)
- NPGIS (CURB NOT ADJACENT TO SIDEWALK)
- PGIS (ROADWAY)
- NPGPS (LAWN, PASTURE, LANDSCAPED AREAS)
- TDA/DISTURBED AREA LIMITS

NPGIS: NON POLLUTION GENERATING IMPERVIOUS SURFACE
 PGIS: POLLUTION GENERATING IMPERVIOUS SURFACE
 NPGPS: NON POLLUTION GENERATING PERVIOUS SURFACE

MATCHLINE SEE FIGURE A-2.18

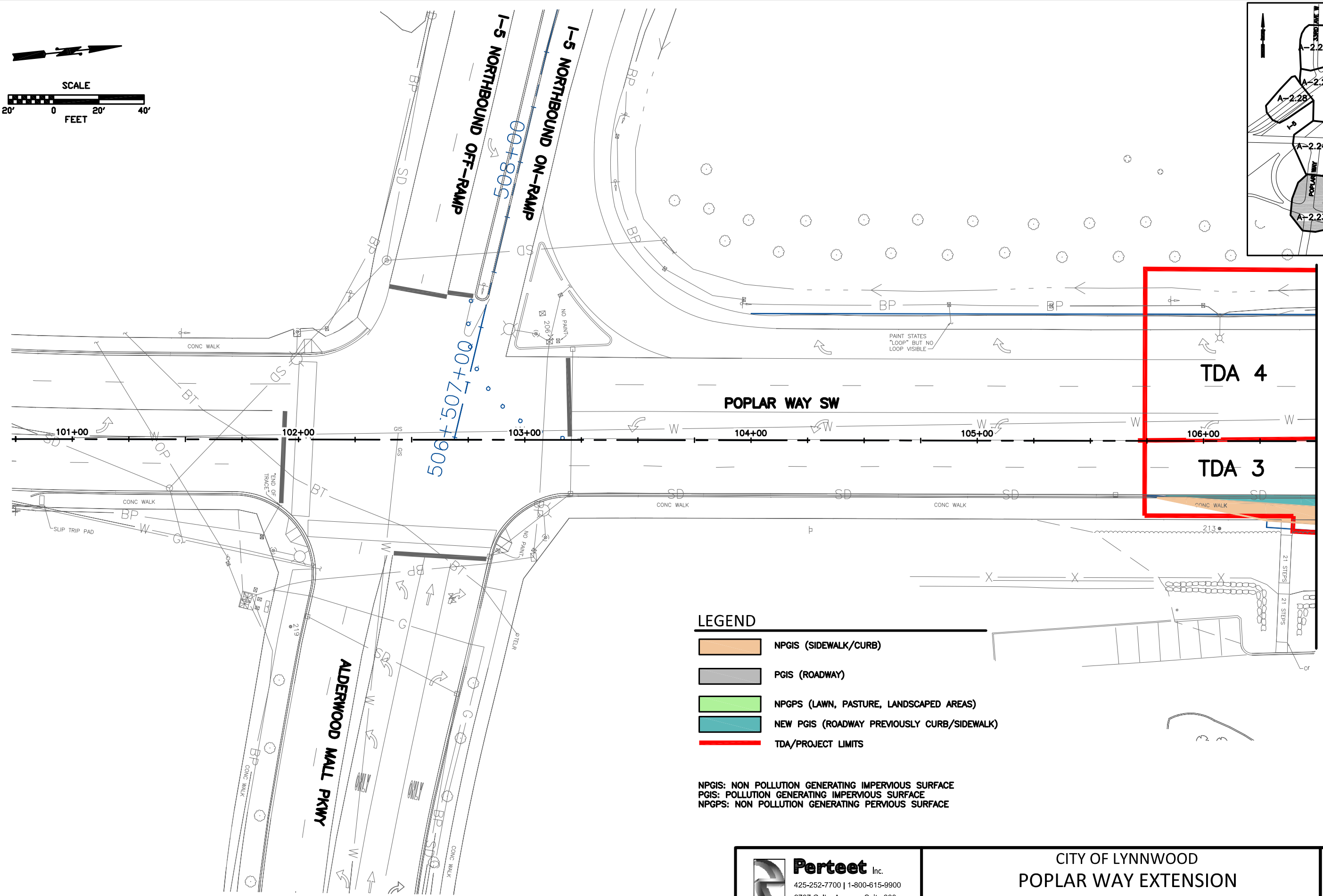
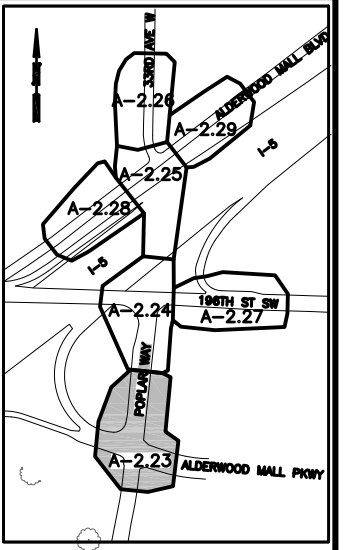
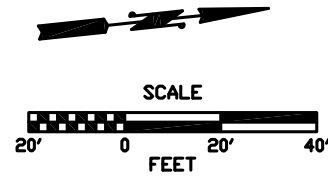


Jun 25, 2013 - 9:34am MickeyC:\Lynnwood_City\Projects\20100156 - Poplar Way Extension Bridge\CADD\Exhibits\Existing Impervious Areas.dwg Layout Name: A-2.22

Perteet Inc.
 425-252-7700 | 1-800-615-9900
 2707 Colby Avenue, Suite 900
 Everett, Washington 98201

CITY OF LYNNWOOD
 POPLAR WAY EXTENSION
 EXISTING IMPERVIOUS AREAS

FIGURE
 A-2.22



MATCHLINE SEE FIGURE A2.24

LEGEND

- NPGIS (SIDEWALK/CURB)
- PGIS (ROADWAY)
- NPGPS (LAWN, PASTURE, LANDSCAPED AREAS)
- NEW PGIS (ROADWAY PREVIOUSLY CURB/SIDEWALK)
- TDA/PROJECT LIMITS

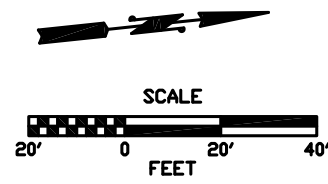
NPGIS: NON POLLUTION GENERATING IMPERVIOUS SURFACE
 PGIS: POLLUTION GENERATING IMPERVIOUS SURFACE
 NPGPS: NON POLLUTION GENERATING PERVIOUS SURFACE

Perteet Inc.
 425-252-7700 | 1-800-615-9900
 2707 Colby Avenue, Suite 900
 Everett, Washington 98201

CITY OF LYNNWOOD
POPLAR WAY EXTENSION
PROPOSED IMPERVIOUS AREAS

FIGURE
A-2.23

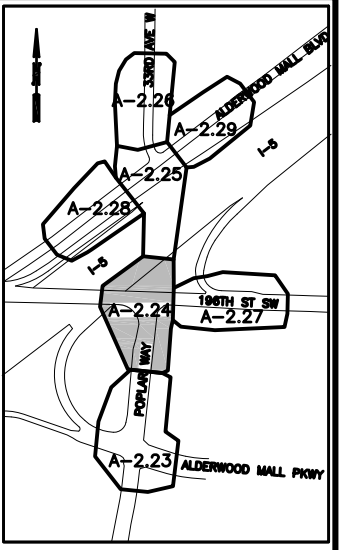
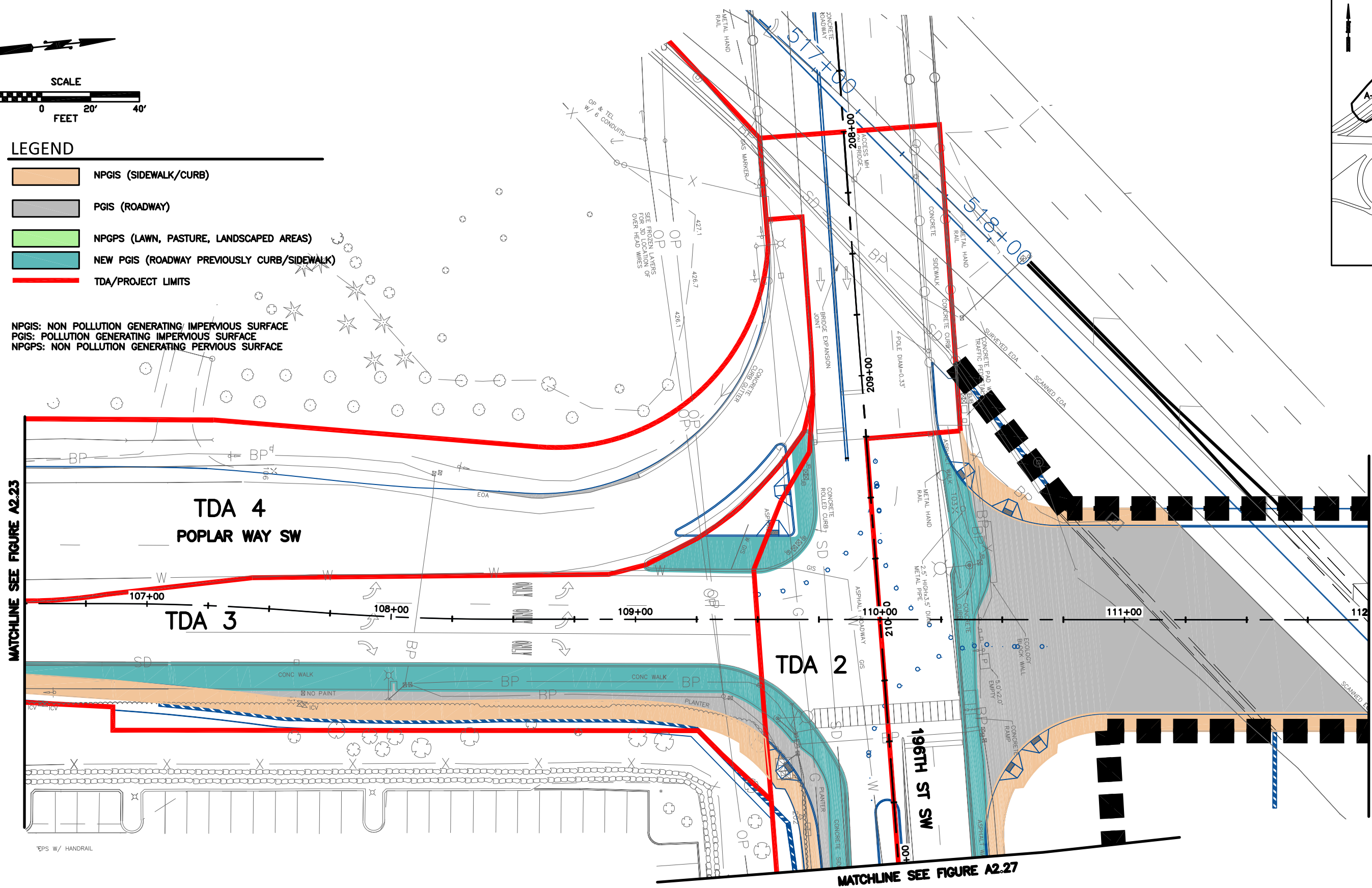
Jun 19, 2013 - 10:30am Mickey C:\Users\mickey\appdata\local\temp\8356\Proposed Impervious Areas.dwg Layout Name: A-2.23



LEGEND

- NPGIS (SIDEWALK/CURB)
- PGIS (ROADWAY)
- NPGPS (LAWN, PASTURE, LANDSCAPED AREAS)
- NEW PGIS (ROADWAY PREVIOUSLY CURB/SIDEWALK)
- TDA/PROJECT LIMITS

NPGIS: NON POLLUTION GENERATING IMPERVIOUS SURFACE
 PGIS: POLLUTION GENERATING IMPERVIOUS SURFACE
 NPGPS: NON POLLUTION GENERATING PERVIOUS SURFACE

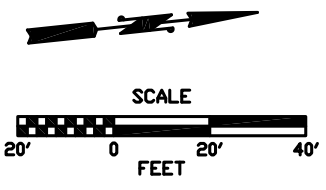


Jun 19, 2013 - 10:31am Mickey C:\Users\mickey\appdata\local\temp\AcP\ub\sh_8356\Proposed Impervious Areas.dwg Layout Name: A-2.24

Perteet Inc.
 425-252-7700 | 1-800-615-9900
 2707 Colby Avenue, Suite 900
 Everett, Washington 98201

CITY OF LYNNWOOD
 POPLAR WAY EXTENSION
 PROPOSED IMPERVIOUS AREAS

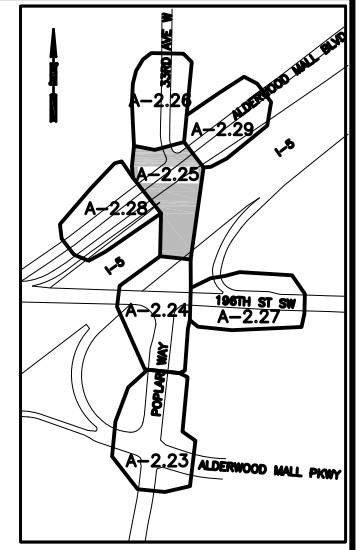
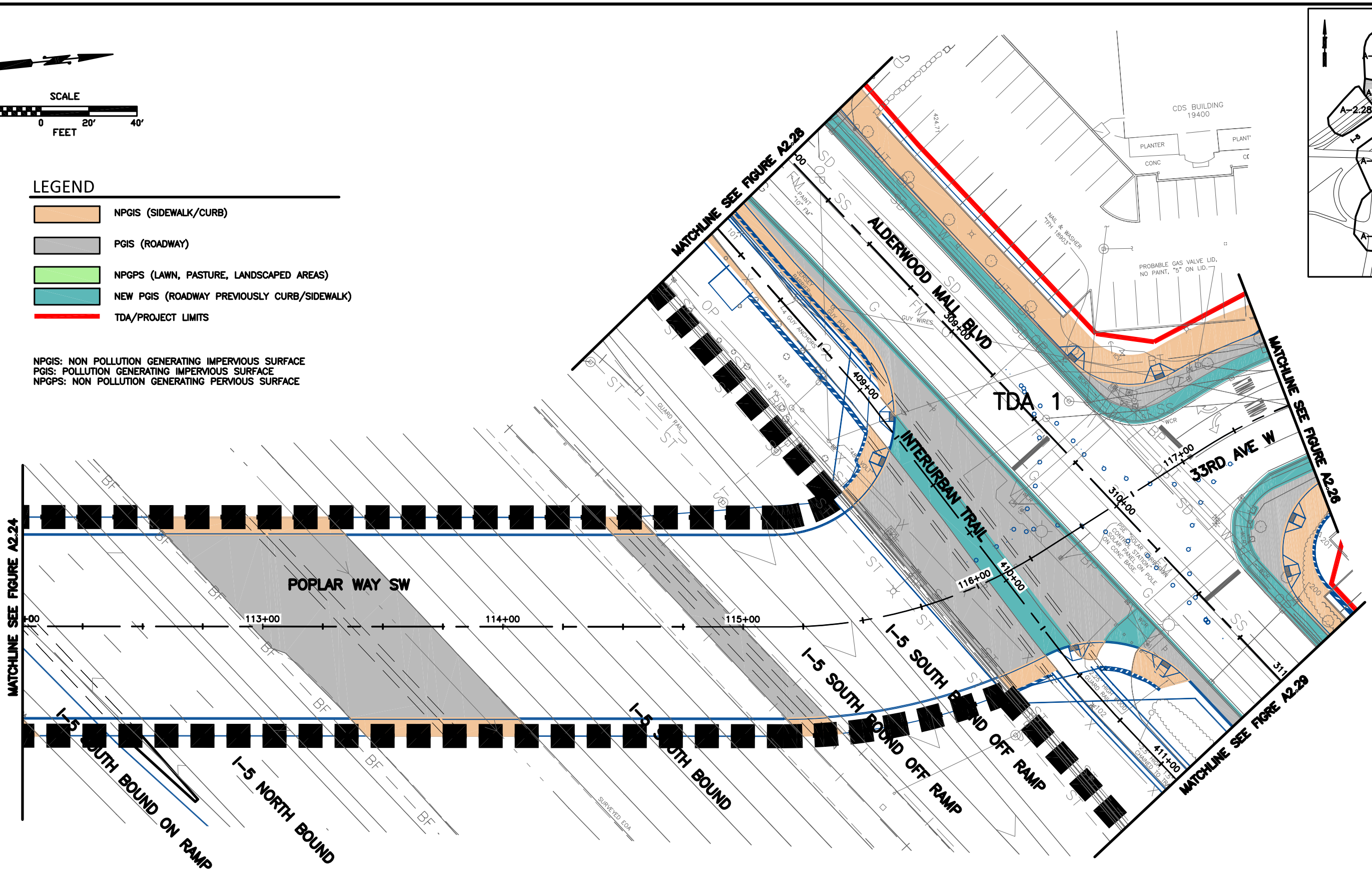
FIGURE
 A-2.24



LEGEND

- NPGIS (SIDEWALK/CURB)
- PGIS (ROADWAY)
- NPGPS (LAWN, PASTURE, LANDSCAPED AREAS)
- NEW PGIS (ROADWAY PREVIOUSLY CURB/SIDEWALK)
- TDA/PROJECT LIMITS

NPGIS: NON POLLUTION GENERATING IMPERVIOUS SURFACE
 PGIS: POLLUTION GENERATING IMPERVIOUS SURFACE
 NPGPS: NON POLLUTION GENERATING PERVIOUS SURFACE

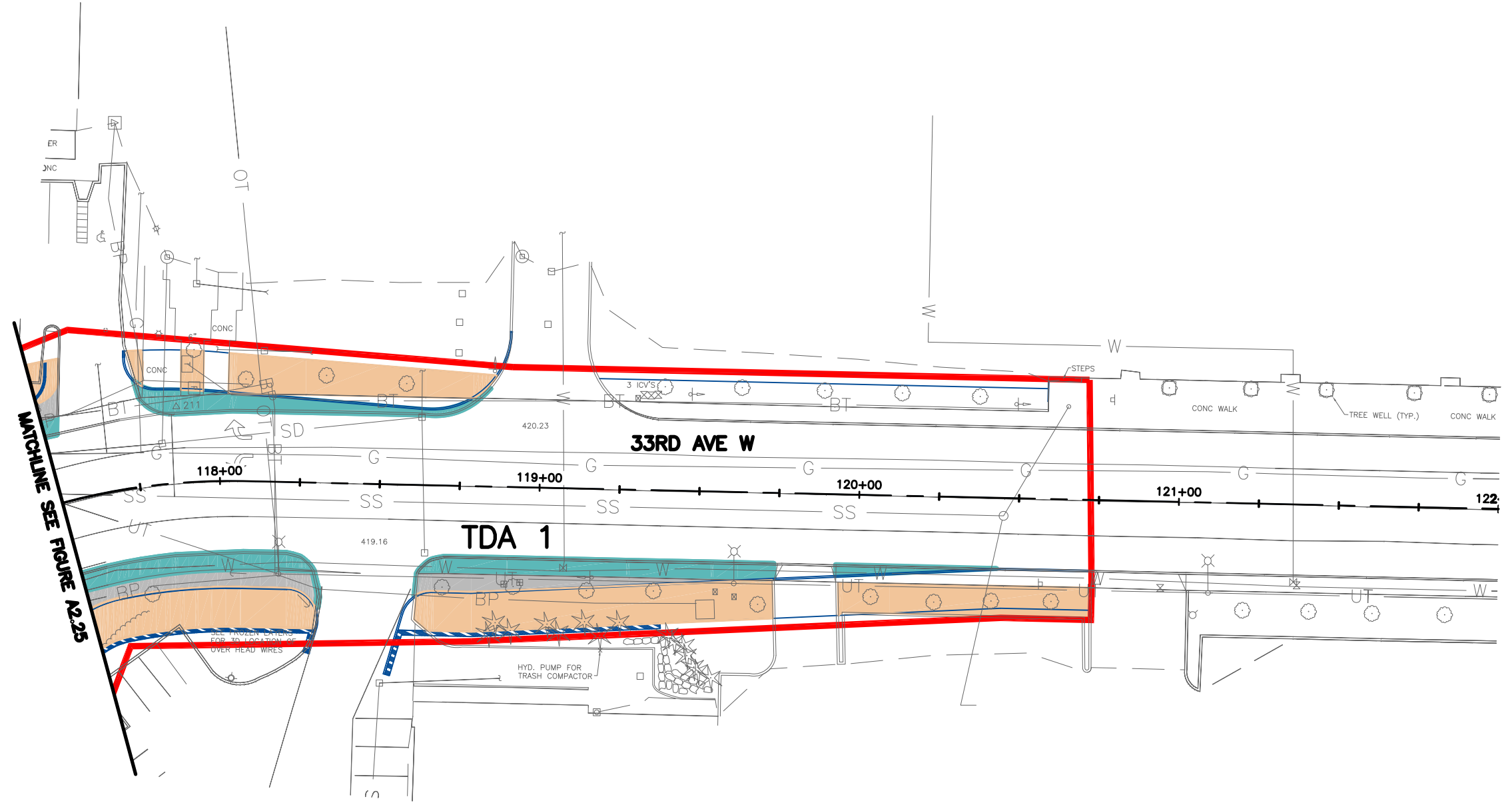
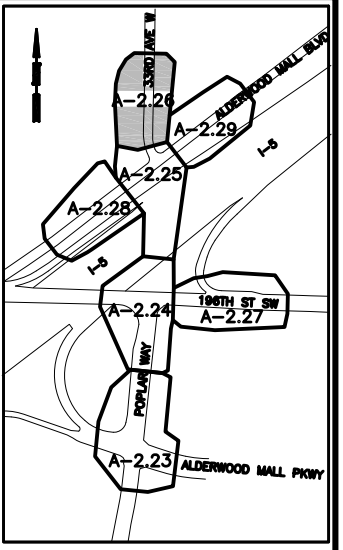
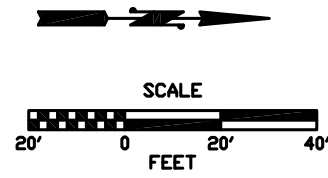


Jun 19, 2013 - 10:31am Mickey C:\Users\mickey\appdata\local\temp\8356\Proposed Impervious Areas.dwg Layout Name: A-2.25






Perteet Inc.
 425-252-7700 | 1-800-615-9900
 2707 Colby Avenue, Suite 900
 Everett, Washington 98201

CITY OF LYNNWOOD
 POPLAR WAY EXTENSION
 PROPOSED IMPERVIOUS AREAS

FIGURE
 A-2.25



LEGEND

	NPGIS (SIDEWALK/CURB)
	PGIS (ROADWAY)
	NPGPS (LAWN, PASTURE, LANDSCAPED AREAS)
	NEW PGIS (ROADWAY PREVIOUSLY CURB/SIDEWALK)
	TDA/PROJECT LIMITS

NPGIS: NON POLLUTION GENERATING IMPERVIOUS SURFACE
 PGIS: POLLUTION GENERATING IMPERVIOUS SURFACE
 NPGPS: NON POLLUTION GENERATING PERVIOUS SURFACE



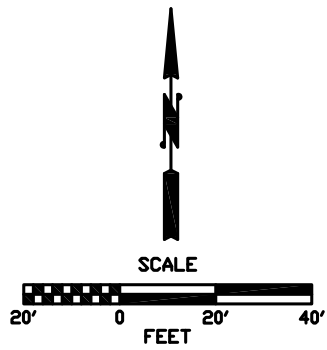
Perteet Inc.
 425-252-7700 | 1-800-615-9900
 2707 Colby Avenue, Suite 900
 Everett, Washington 98201

CITY OF LYNNWOOD
 POPLAR WAY EXTENSION
 PROPOSED IMPERVIOUS AREAS

FIGURE
 A-2.26

Jun 19, 2013 - 10:31am Mickey C:\Users\mickey\appdata\local\temp\8356\Proposed Impervious Areas.dwg Layout Name: A-2.26

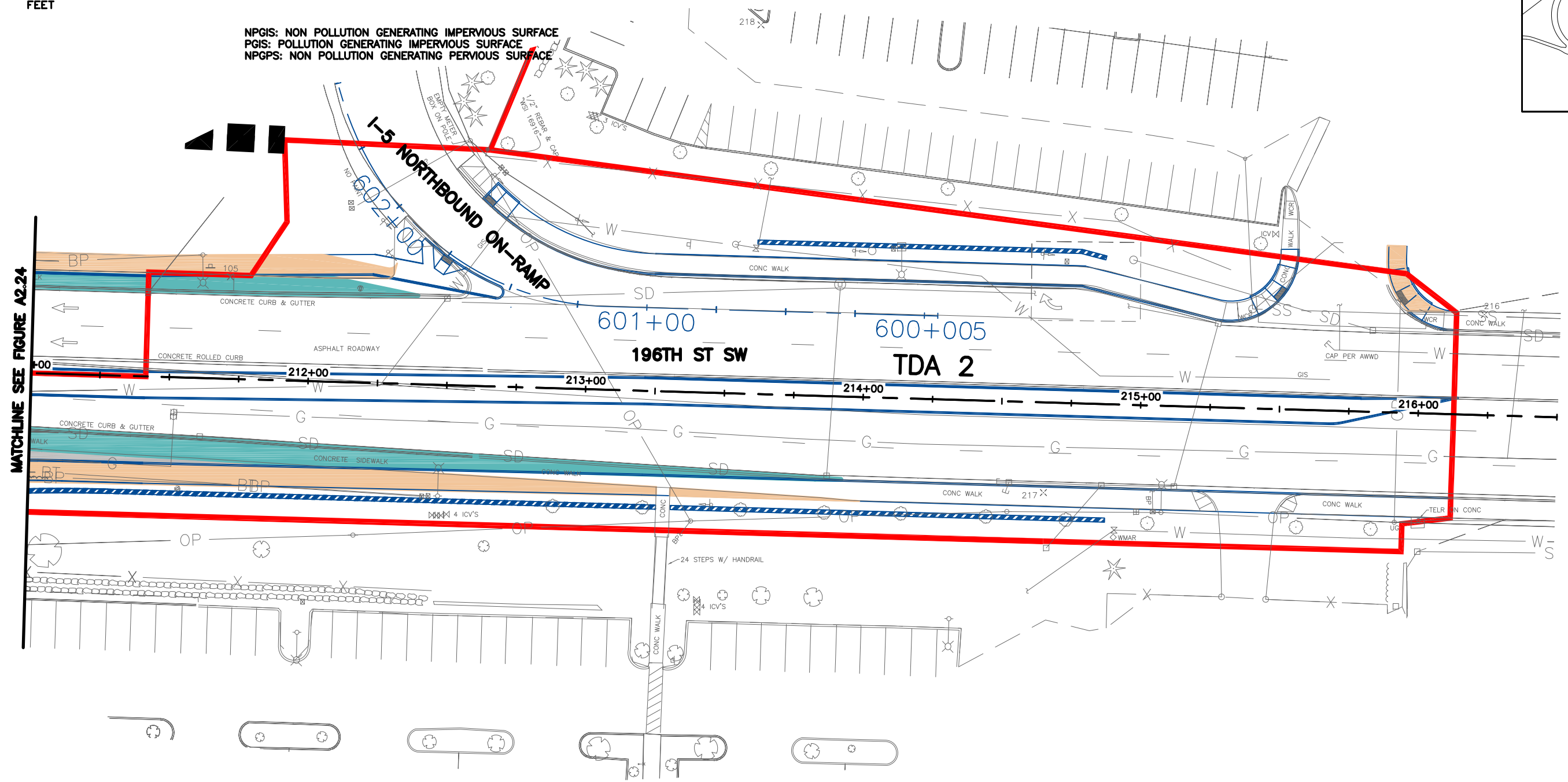
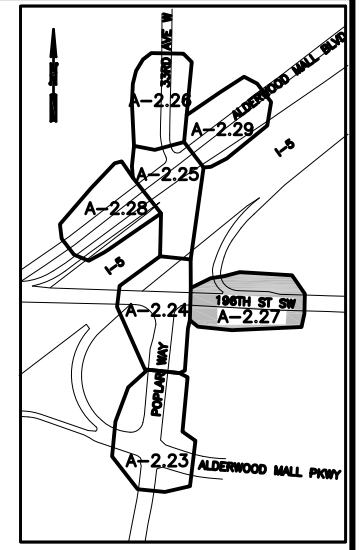
Jun 19, 2013 - 10:31am Mickey C:\Users\mickey\appdata\local\temp\8356\Proposed Impervious Areas.dwg Layout Name: A-2.27



LEGEND

	NPGIS (SIDEWALK/CURB)
	PGIS (ROADWAY)
	NPGPS (LAWN, PASTURE, LANDSCAPED AREAS)
	NEW PGIS (ROADWAY PREVIOUSLY CURB/SIDEWALK)
	TDA/PROJECT LIMITS

NPGIS: NON POLLUTION GENERATING IMPERVIOUS SURFACE
 PGIS: POLLUTION GENERATING IMPERVIOUS SURFACE
 NPGPS: NON POLLUTION GENERATING PERVIOUS SURFACE

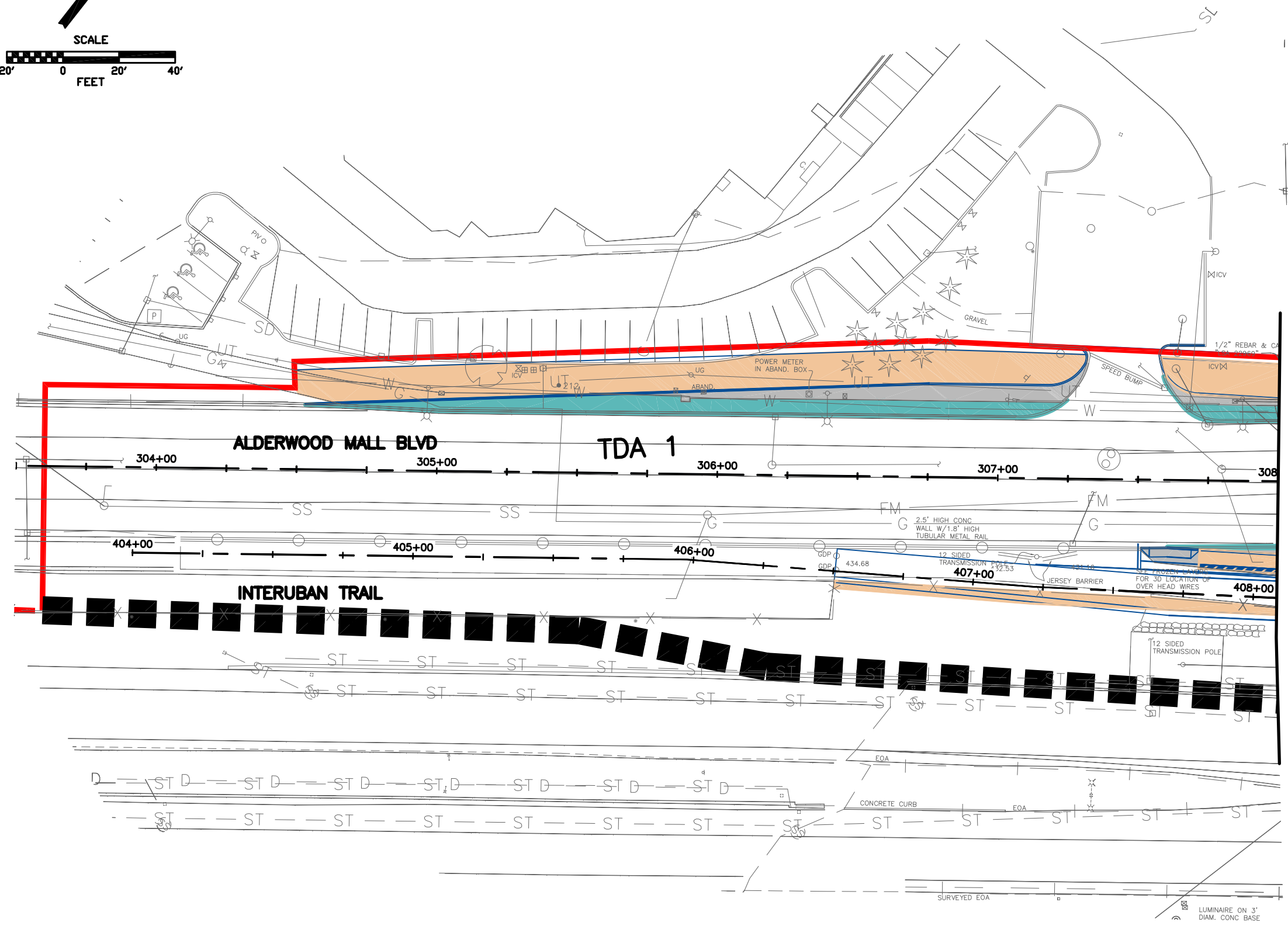
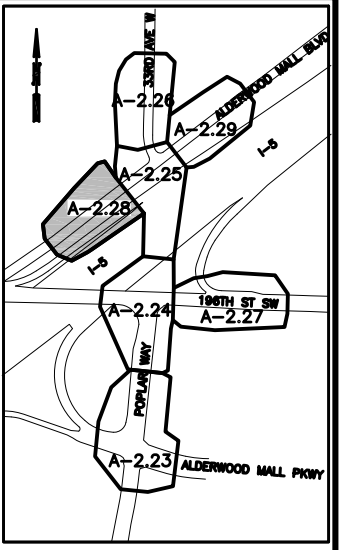
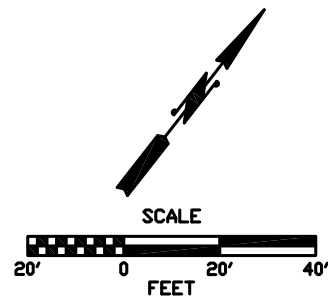


MATCHLINE SEE FIGURE A2.24

Perteet Inc.
 425-252-7700 | 1-800-615-9900
 2707 Colby Avenue, Suite 900
 Everett, Washington 98201

CITY OF LYNNWOOD
 POPLAR WAY EXTENSION
 PROPOSED IMPERVIOUS AREAS

FIGURE
 A-2.27



MATCHLINE SEE FIGURE A2.25

LEGEND

	NGPIS (SIDEWALK/CURB)
	PGIS (ROADWAY)
	NPGPS (LAWN, PASTURE, LANDSCAPED AREAS)
	NEW PGIS (ROADWAY PREVIOUSLY CURB/SIDEWALK)
	TDA/PROJECT LIMITS

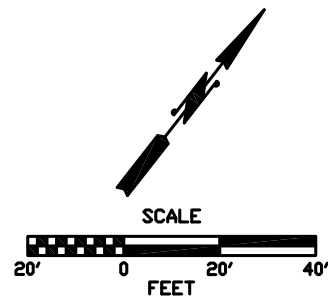
NGPIS: NON POLLUTION GENERATING IMPERVIOUS SURFACE
 PGIS: POLLUTION GENERATING IMPERVIOUS SURFACE
 NPGPS: NON POLLUTION GENERATING PERVIOUS SURFACE

Jun 19, 2013 - 10:32am Mickey C:\Users\mickey\appdata\local\temp\AcP\publish_8356\Proposed Impervious Areas.dwg Layout Name: A-2.28

Perteet Inc.
 425-252-7700 | 1-800-615-9900
 2707 Colby Avenue, Suite 900
 Everett, Washington 98201

CITY OF LYNNWOOD
 POPLAR WAY EXTENSION
 PROPOSED IMPERVIOUS AREAS

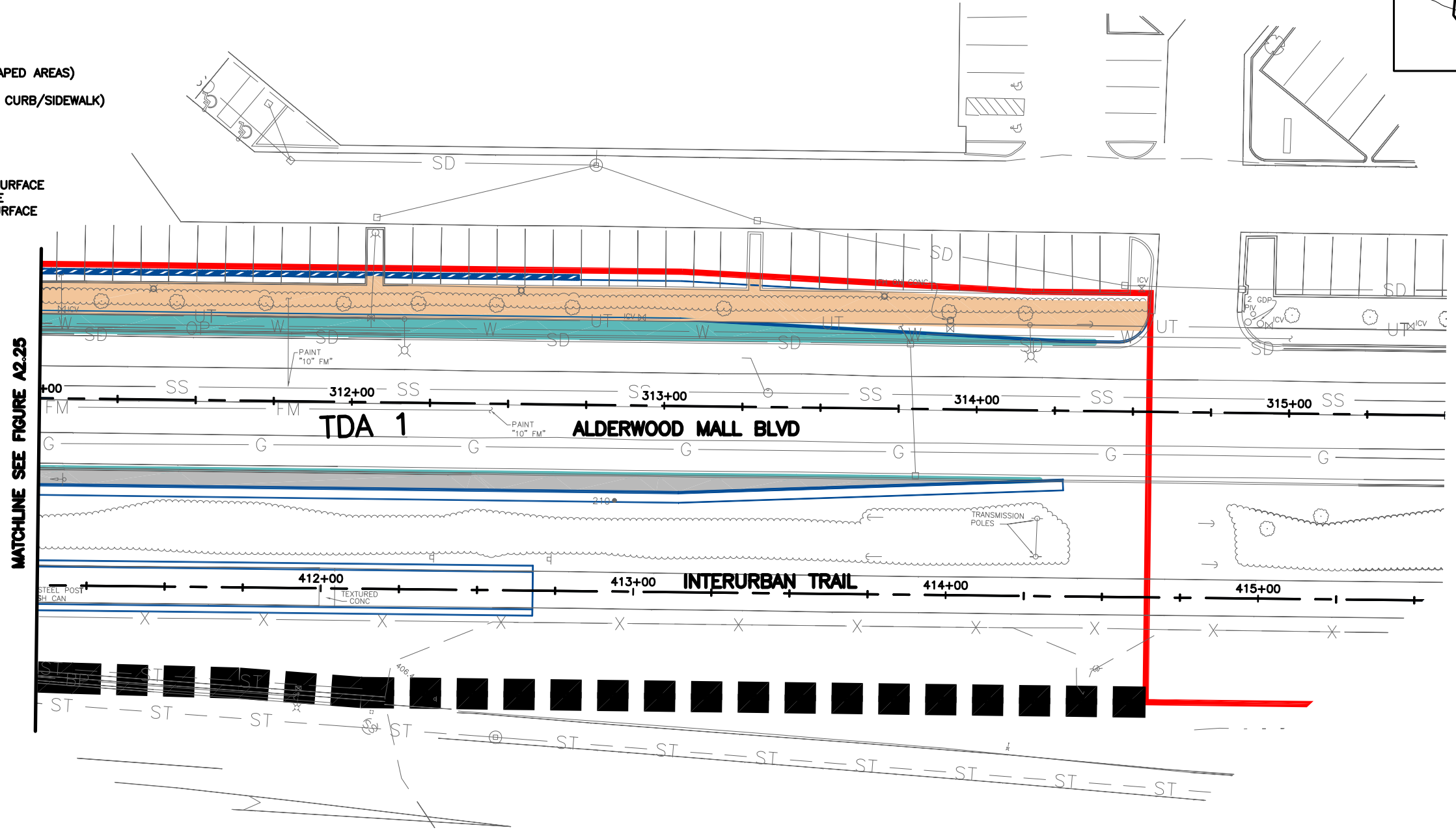
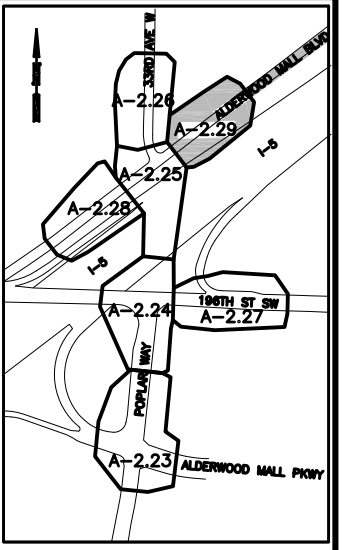
FIGURE
 A-2.28



LEGEND

- NPGIS (SIDEWALK/CURB)
- PGIS (ROADWAY)
- NPGPS (LAWN, PASTURE, LANDSCAPED AREAS)
- NEW PGIS (ROADWAY PREVIOUSLY CURB/SIDEWALK)
- TDA/PROJECT LIMITS

NPGIS: NON POLLUTION GENERATING IMPERVIOUS SURFACE
 PGIS: POLLUTION GENERATING IMPERVIOUS SURFACE
 NPGPS: NON POLLUTION GENERATING PERVIOUS SURFACE



MATCHLINE SEE FIGURE A2.25

Jun 19, 2013 - 10:32am Mickey C:\Users\mickey\appdata\local\temp\AcFpublsh_8356\Proposed Impervious Areas.dwg Layout Name: A-2.29

Perteet Inc.
 425-252-7700 | 1-800-615-9900
 2707 Colby Avenue, Suite 900
 Everett, Washington 98201

CITY OF LYNNWOOD
 POPLAR WAY EXTENSION
 PROPOSED IMPERVIOUS AREAS

FIGURE
 A-2.29