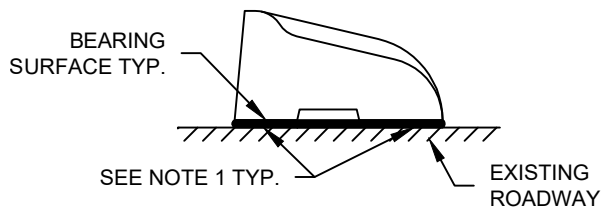
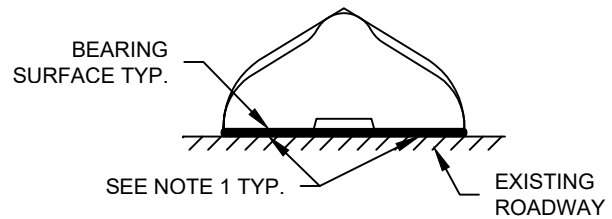


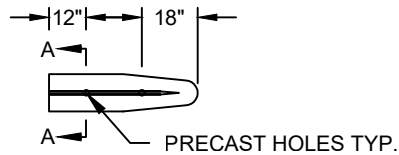
FOR MAINTENANCE OR EXTENSION OF EXISTING CURB ONLY.  
 NOT FOR NEW INSTALLATIONS.  
 (FOR NEW INSTALLATIONS SEE STD. ST-CG-3)



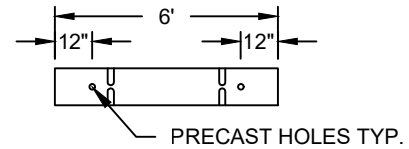
SECTION - TYPE A CURB



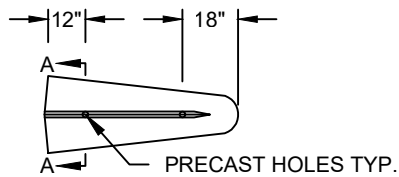
SECTION - TYPE C CURB



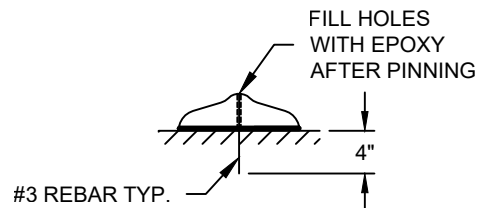
PLAN: TYPE C NOSING



PLAN: TYPE C OR TYPE A  
CONNECTING DIVIDER



PLAN: TYPE A NOSING



SECTION A-A

**NOTES:**

1. MIXTURE COMPOSED OF 1 PART LIME, 2 PARTS CEMENT, AND 3 PARTS COARSE SAND. APPLY A UNIFORM THICKNESS OF 3/4" TO ALL BEARING SURFACES.
2. NOSING AND NEXT TWO SECTIONS OF CURB SHALL HAVE HOLES PRECAST AS SHOWN.