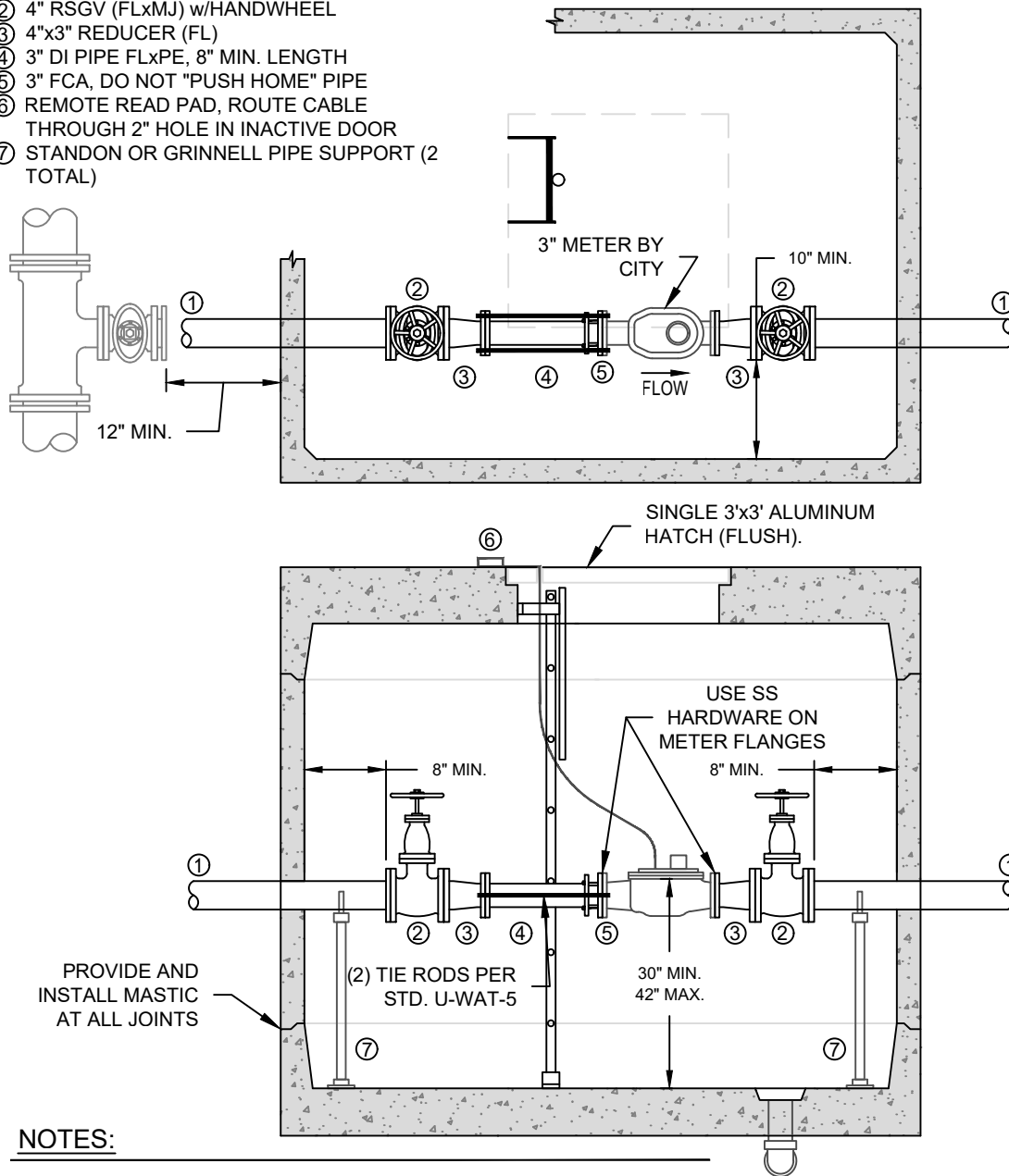


- ① 4" DI PIPE
- ② 4" RSGV (FLxMJ) w/HANDWHEEL
- ③ 4"x3" REDUCER (FL)
- ④ 3" DI PIPE FLxPE, 8" MIN. LENGTH
- ⑤ 3" FCA, DO NOT "PUSH HOME" PIPE
- ⑥ REMOTE READ PAD, ROUTE CABLE THROUGH 2" HOLE IN INACTIVE DOOR
- ⑦ STANDON OR GRINNELL PIPE SUPPORT (2 TOTAL)



NOTES:

1. SENSUS OMNI C2 METER LAY LENGTH = 17". BRAND AND STYLE OF METER TO BE PROVIDED BY THE CITY OF LYNNWOOD UTILITY METER SHOP AT CONTRACTOR'S EXPENSE. CONTRACTOR MUST CONFIRM STRAIGHT RUNS OF PIPE UPSTREAM AND DOWNSTREAM OF METER ARE SUFFICIENT TO MAINTAIN METER ACCURACY PER MANUFACTURER.
2. ALL JOINTS SHALL BE RESTRAINED BETWEEN THE WATERMAIN AND THE METER ASSEMBLY. ALL JOINTS ON THE DOWNSTREAM (CUSTOMER) SIDE OF THE METER SHALL BE RESTRAINED TO NO LESS THAN 50 FEET PAST THE VAULT OR TO THE NEAREST THRUST BLOCK.
3. BACKFLOW PREVENTION ASSEMBLY MUST BE PROVIDED IN ABOVEGROUND HEATED SPACE MAINTAINED BY OWNER.
4. CROSS CONNECTION DEVICE SHALL MEET WAC 246-290-490 AT LOCATION INSTALLED.
5. FOR CRITICAL FACILITIES REQUIRING 24/7 SUPPLY, PROVIDE SEPARATE METER AND BACKFLOW PREVENTION DEVICE.
6. USE ONE FULL LENGTH OF 4" PIPE THROUGH THE VAULT TO ENSURE ALIGNMENT. CUT OUT FOR INSTALLATION OF ASSEMBLY.
7. VAULT MINIMUM INSIDE DIMENSIONS OF 8'Lx6'Wx6.5'H, UTILITY VAULT 687WA OR APPROVED EQUAL.
8. ALL VAULTS MUST MEET REQUIREMENTS OF STD. U-WAT-4.