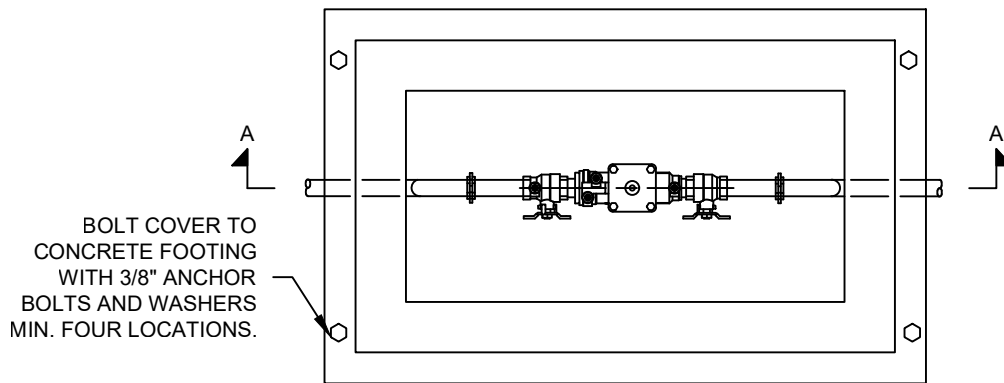


SECTION A-A



PLAN VIEW

NOTES:

1. ASSEMBLY SHALL BE LOCATED WITHIN TWO (2) FEET OF THE WATER METER INSTALLATION AND UPSTREAM OF ANY BRANCH CONNECTIONS. ALTERNATE LOCATIONS MAY BE ALLOWED WITH APPROVAL FROM THE CITY'S CROSS-CONNECTION CONTROL SPECIALIST.
2. ASSEMBLY SHALL BE ON THE WASHINGTON STATE DEPARTMENT OF HEALTH APPROVED LIST.
3. CONTRACTOR SHALL REQUEST INSPECTION AFTER INSTALLATION AND BEFORE INITIAL TESTING.
4. ASSEMBLY SHALL BE TESTED BY A WASHINGTON STATE CERTIFIED BACKFLOW ASSEMBLY TESTER WITHIN SEVEN (7) DAYS OF UPSTREAM WATER METER INSTALLATION.
5. ASSEMBLY SHALL BE ACQUIRED AND INSTALLED AS A SINGLE UNIT WITH NO MODIFICATIONS.
6. ASSEMBLY SHALL HAVE ADEQUATE FREEZE PROTECTION THAT DOES NOT INTERFERE WITH OPERATION OR TESTING.
7. PIPE FROM METER TO ASSEMBLY SHALL BE COPPER TO BRASS.
8. UNIONS SHALL BE INSTALLED VERTICALLY OR HORIZONTALLY. DIELECTRIC UNIONS SHALL BE USED TO SEPARATE DISSIMILAR MATERIALS.
9. ASSEMBLY SHALL HAVE TEST COCK PROTECTION WITH PLUGS, CAPS, OR COVERS.
10. MINIMUM TWELVE (12) INCH GAP FROM BOTTOM OF RELIEF PORT TO TOP OF DAYLIGHT DRAIN.